

114°00' W 113°30'00" W 113°00' W 112°30'00" W 112°00' W 111°30'00" W 111°00' W

Beaverhead-Deerlodge National Forest Flight Hazard Map 2019

Legend

- Beaverhead-Deerlodge National Forest
- Beaverhead-Deerlodge NF Radio Sites
- Towers/Bins not on Sectional
- Electronics not on Sectional
- Power Lines Not on Sectional
- Military Training Route Description Points
- Military Training Route

46°30'00" N
46°00' N
45°30'00" N
45°00' N
44°30'00" N

46°30'00" N
46°00' N
45°30'00" N
45°00' N
44°30'00" N

IR-301
 D - N 44°25.00'
 W 112°59.00'
 E - N 45°05.00'
 W 113°06.00'
 F - N 45°36.00'
 W 113°11.50'
 G - N 45°34.00'
 W 113°45.00'

IR-307
 F - N 45°34.00'
 W 113°45.00'
 G - N 45°36.00'
 W 113°11.50'
 H - N 45°05.00'
 W 113°06.00'
 I - N 44°25.00'
 W 112°59.00'

MTR 301/307: Ground to 11000'

All river and road corridors have numerous line crossings with multiple unmarked hazards.

NOT TO BE USED FOR NAVIGATIONAL PURPOSES - FOR CURRENT INFORMATION CONSULT THE FAA

Deconflict Military Training Route with Dillon Dispatch Daily

- IR-301 Route Width - 8 NM either side of centerline from A to H; 5 NM either side of centerline from H to I; 4 NM either side of centerline from I to L.
- IR-307 Route Width - 4 NM either side of centerline from A to D; 5 NM either side of centerline from D to E; 8 NM either side of centerline from E to L.

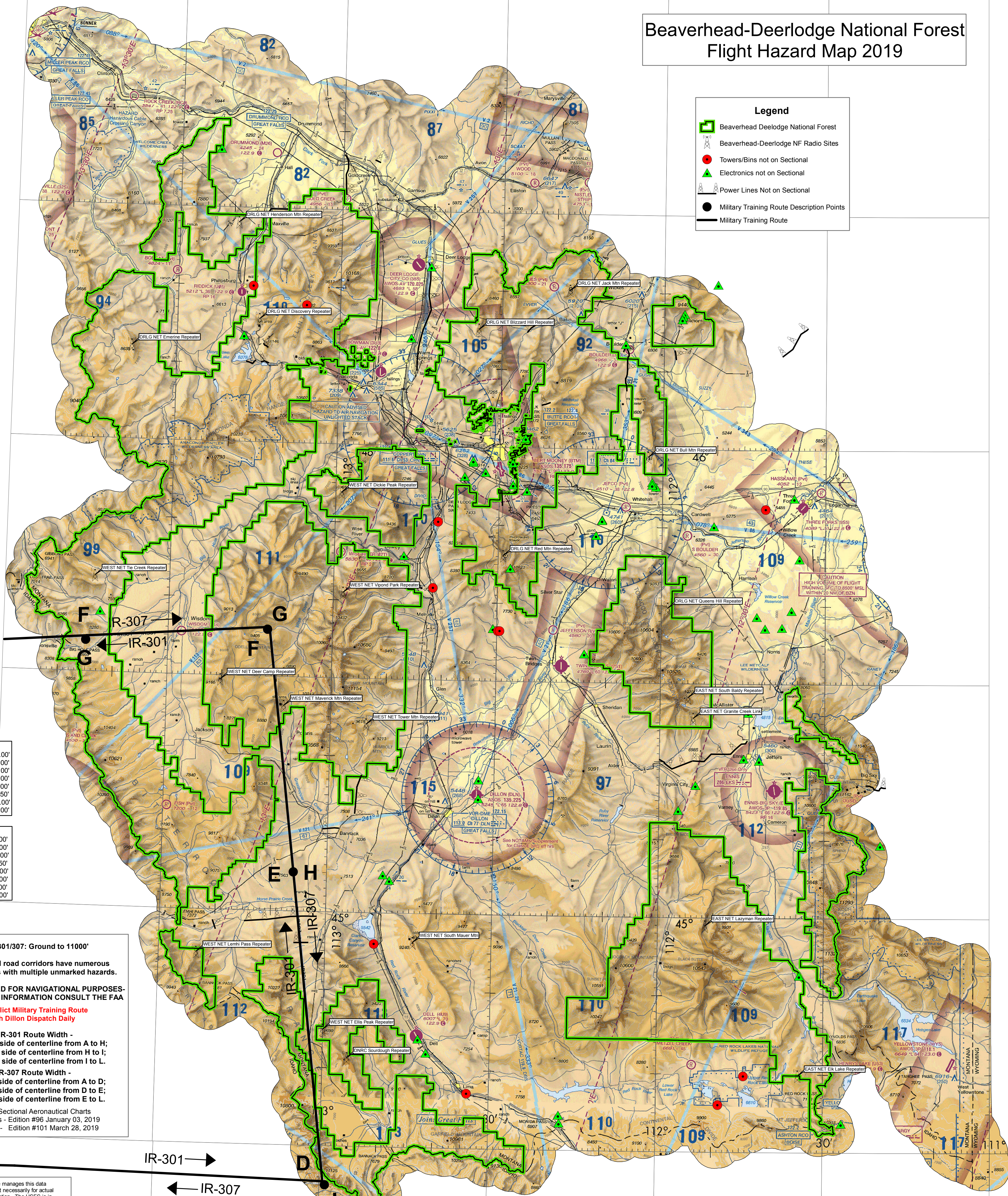
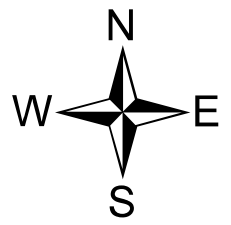
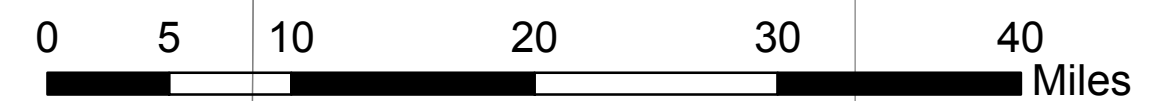
Digital Sectional Aeronautical Charts
 Great Falls - Edition #96 January 03, 2019
 Salt Lake - Edition #101 March 28, 2019

The USDA Forest Service manages this data for planning purposes, not necessarily for actual on the ground implementation. The USFS is in no way condoning or endorsing the application of these data for any given purpose. It is the sole responsibility of the user to determine whether or not the data are suitable for the intended purpose. It is also the obligation of the user to apply those data in an appropriate and conscientious manner. The USFS provides no warranty, nor accepts any liability occurring from any incorrect, incomplete, or misleading data, or from any incorrect, incomplete, or misleading use of these data.

Map Created By: S. Kujala
 Map Requested By: D. Morton
 Creation Date: 03/26/19

This map replaces all versions of the same title printed with prior dates.

Map Location: T:\FS\NFS\BeaverheadDeerlodge\Program\5100FireMgmt\GIS\Workspace\skujala\Hazards_2019
 Source Location: T:\FS\NFS\BeaverheadDeerlodge\Program\5100FireMgmt\GIS\Workspace\skujala\Flight_Hazard_Work_AllHazards_24x26_032619.mxd



114°00' W 113°30'00" W 113°00' W 112°30'00" W 112°00' W 111°30'00" W 111°00' W