

NORTHERN IDAHO AIRCREW - PILOT ORIENTATION BRIEFING GUIDE



2019

PREFACE

The North Idaho Aircrew/Pilot Briefing Guide is composed of several sections, which are supplemental to the Idaho Panhandle NF (IPF) Aviation Management Plan, local operations plans and augments the Coeur d Alene Interagency Dispatch Center (CDC)– Standard Operating Procedures - Chapter 60. The contents of each section are intended as useful information for flight crews, aircrews, aircraft managers, dispatchers and aviation managers. The ultimate goal is to promote aviation safety and efficiency.

PUBLICATION/REVISIONS

The format, publication, dissemination and revision of this guide are the responsibility of the Idaho Panhandle National Forest Aviation Officer (FAO). It will be updated and published annually. Critical content such as names, phone numbers, radio frequencies, facilities and procedures are inherently subject to change. Because of this, District Offices/Supervisor Offices and recipients of this guide need to inform the FAO of any changes in their respective guide content immediately. In addition, a formal review process will occur each year prior to field season to ensure that an accurate and current guide is published.

DISCLAIMER

The information contained herein cannot be assumed to be 100% accurate, although every effort has been made to publish only correct and current data. ***This guide does not eliminate the need for procedural and safety briefings.*** Flight crews and aircrews must always conduct and receive pre-flight briefings specific to the local agency or incident organization, airspace, weather, topography and the intended mission. Pilots and government personnel must still refer to published and accepted material, when available: Forest Aviation Officer or designee, ID-CDC Aircraft Dispatcher, NOTAMS, current GPS Data, aeronautical charts, airport and frequency directories.

ID- CDC TARO (KNEE BOARD)

AIRCRAFT DISPATCH A#				COMMENTS:			
DATE / TIME:				SUNSET + 30:			
INCIDENT NAME:			INCIDENT #:				
DESCRIPTIVE LOCATION:			ELEVATION:				
			CHARGE CODE:				
Legal Loc. (Town/Range/Sec)	S	E	S				
LAT/LONG Ddm:							
DISTANCE (NM):	BEARING (DEG):	FROM:					
COMMAND FREQUENCY		RX: #N/A	Tone: #N/A				
		TX: #N/A	Tone: #N/A				
AIR CONTACT:	A/A FREQUENCY:		TONE:				
GROUND CONTACT:		A/G FREQUENCY:					
		RX: #N/A	Tone: #N/A				
	TX: #N/A	Tone: #N/A					
HAZARDS:		BOUNDARY:					
		None					
MTR/SUA:	No	TFR:	No				
Other Aircraft:		RELOAD:					
		FAXED:		time:	to:	time:	
		EMAILED:		time:	to:	time:	

Dispatcher:
Aircraft Desk:

--	--

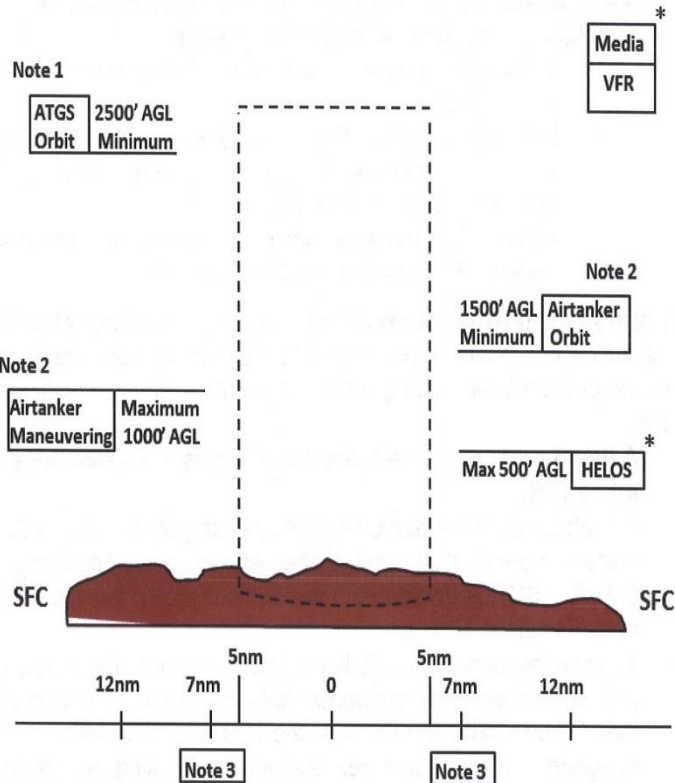
Fire Traffic Area (FTA) 09 Dec 2015

***** Clearance is required to enter the FTA *****

Initial Radio Contact: 12 nm on assigned air tactical frequency.

No Radio Contact: Hold a minimum of 7 nm from the incident.

Note: Airtanker maneuvering altitude determines minimum airtanker and ATGS orbit altitudes. Assigned altitudes may be higher and will be stated as MSL.



Note 1 | 1000' min. separation between ATGS orbit and airtanker orbit altitude.

Note 2 | 500' min. separation between airtanker orbit and maneuvering altitude.

Note 3 | On arrival reduce speed to cross 7 nm at assigned altitude and 150 KIAS or less.

*** Helicopters:** Fly assigned altitudes and routes.

*** Media:** Maintain VFR separation above highest incident aircraft or position and altitude as assigned by controlling aircraft.

Airtanker Base
As Assigned

Air Guard
168.625 Tx Tone 110.9

Air to Air
As Assigned

National Flight Following
168.650 Tone 110.9 TX and RX



National Interagency Airspace: <http://airspacecoordination.org>

Unmanned Aerial Systems / Drones

The proliferation of public use of small UAS/Drone technology is a direct hazard to agency manned aircraft engaged in suppression operations. Aircrews need to be ever vigilant as they engage on an incident. If an unauthorized device is spotted all aircraft within the fire traffic area need to immediately disengage until airspace de-confliction can be verified. The Incident Commander and Dispatch also needs promptly notified. Agency use of UAS is also ever increasing as policy and procedures governing their use changes almost daily. Proactive communication is key to ensure safe airspace.

See the IPF UAS Ops plan.



AIRSPACE BOUNDARY OPERATIONS

The requirement for increased management and coordination is due to the possibility of two or more agencies/cooperators conducting simultaneous, uncoordinated aviation operations within those areas, which would unknowingly put the responding aerial resources within close proximity to one another, placing aircraft and crews at risk. ID-CDC has an Airspace Boundary Plan to identify such boundaries and I/A zones and provide means of communication, coordination, and airspace de-confliction within those areas.

GUIDELINES & PROCEDURES.

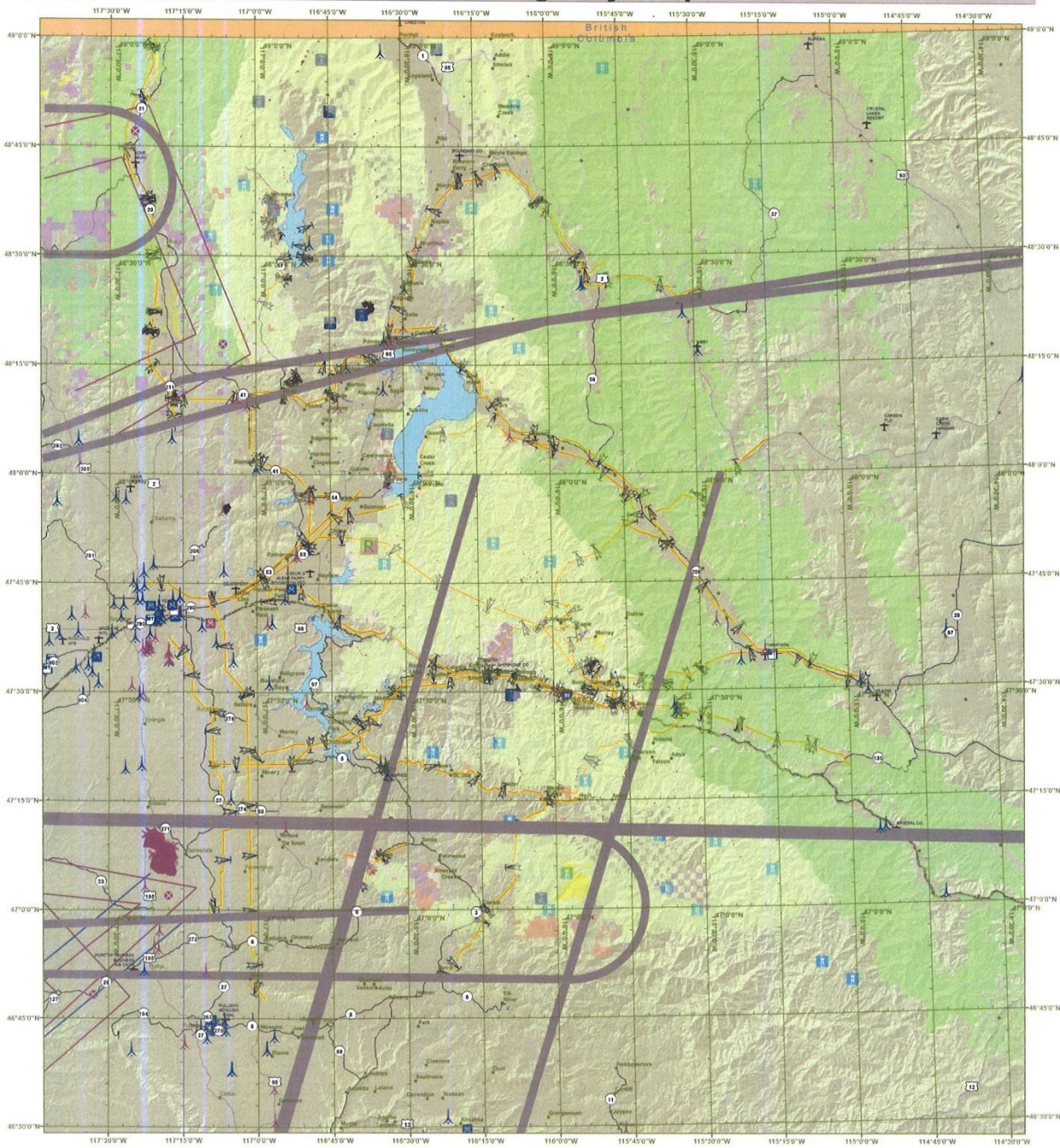
- A. An imaginary 10 mile wide “neutral air” corridor center on agency/cooperator boundaries. The “neutral air” for mutual or exchanged initial attack areas or zones will encompass the whole zone plus 5 miles outside the zones boundaries. ID-CDC utilizes the “Hands across the Border” agreement with Canada. If working within five miles of the Canadian border it’s very important to make a Call in the blind on **A/A126.7 A/G 163.890 BC Silver**. Our friends from the north have many aviation assets and you could be responding to the same fire.
- B. Any agency conducting aerial operations within a corridor or zone should immediately notify the adjoining agency/cooperator of such operations. This is accomplished to and from dispatch offices prior to the commencement of operations and when operations cease. Examples of aerial operations include reconnaissance, fire suppression missions, special aviation projects, resource management flights, helicopter logging, etc.

In addition to Dispatch Centers notifying adjoining Centers, agency aircraft should establish contact in proximity with other aircraft on the assigned air-to-air frequency. Should contact not be made the contact air-to-air frequency will be “Air Guard” 168.625 Mhz. This frequency will be designated for initial contact and coordination between converging aircraft within corridors and zones only when contact is not otherwise possible. Because this frequency is programmed as the default receive frequency in all agency and contract aircraft FM radios and is intended for initial contact and emergency purposes only, it is imperative that this frequency not be utilized for tactical or logistical purposes.

See the NORTHWEST WILDLAND FIRE PROTECTION AGREEMENT Cooperative Operating Plan (Northwest Compact)

https://gacc.nifc.gov/nrcc/nrcg/agreements_operating_plans/2017_nwc_cooperative_operating_plan_final.pdf

2018 Known Aviation Hazards Coeur d'Alene Interagency Dispatch Area



- National/Local Vertical Obstructions**
- BRIDGE > 200 Feet AGL
 - PLANT > 200 Feet AGL
 - STACK > 200 Feet AGL
 - TANK > 200 Feet AGL
 - WINDMILL < 200 Feet AGL
 - WINDMILL > 200 Feet AGL
 - TOWER > 200 Feet AGL
 - TOWER > 200 Feet AGL

- Other Local Obstructions and Special Use Areas**
- Airfield
 - Transmission Line
 - Charlitt
 - Retardant Avoidance Areas

- Military Training Routes and Special Use Areas**
- Air Relaying Routes (AFR)
 - Visual Route
 - Instrument Route Leg Identifier
 - Instrument Route

- Land Ownership**
- Commercial
 - Local Government
 - Private
 - State
 - Idaho Panhandle NF
 - Bureau of Land Management
 - US Army Corps of Engineers
 - Indian Reservation
 - USDA Forest Ser vice
 - Other Federal Lands
- This map contains data from the Digital Obstacle File (DOF) provided by the Federal Aviation Administration (FAA) Aeronautical Information Services Obstacle Data File. It consists of data extracted from three man-made objects that affect specific aeronautical charting products and does not purport to indicate the presence of all obstructions that may be encountered.
- DOF data as of: 23 April 2018**



The USDA Forest Service makes no warranty as to the accuracy, reliability or completeness of these data for individual or aggregate use with other data. Original data were compiled from various sources. This information may not meet National Map Accuracy Standards. This product was developed through digital means and may be updated without notification.

ORGANIZATION

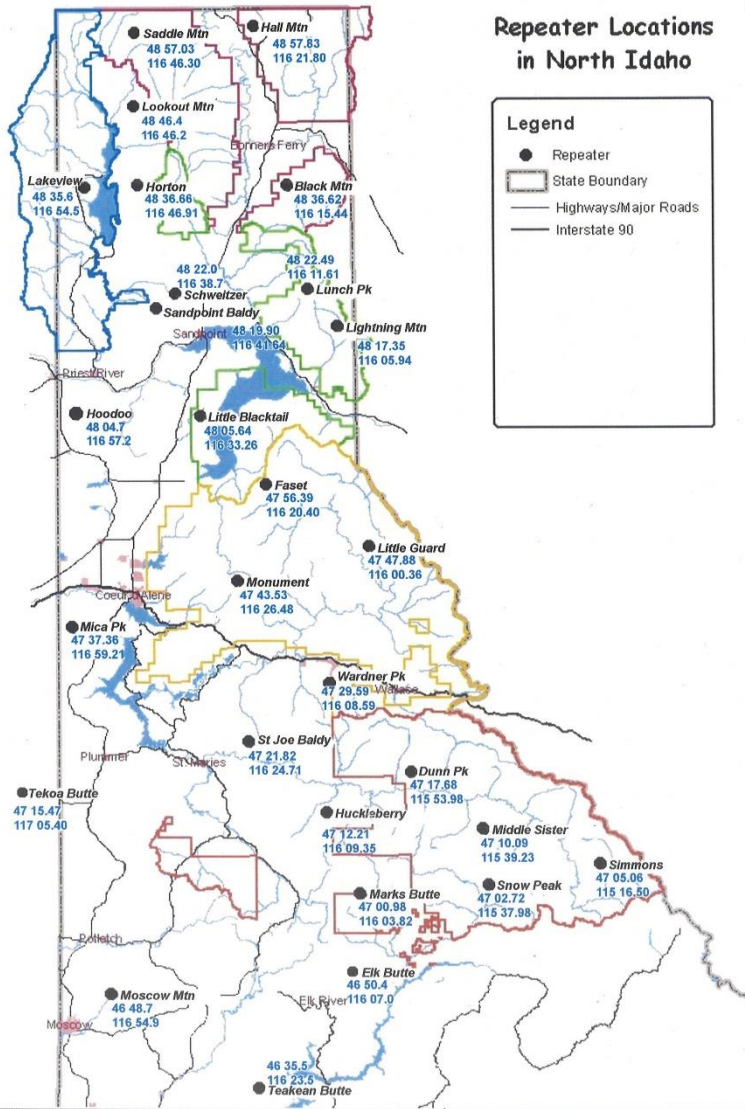
Coeur d Alene Interagency Dispatch Center (ID-CDC) provides support for the following units:

- **Idaho Panhandle National Forest** (5 districts: Coeur d Alene River, St. Joe, Sandpoint, Priest Lake, Bonners Ferry)
- **Idaho Department of Lands (IDL) North Ops** (West St. Joe FPD, Priest Lake FPD, Pend Oreille Lake FPD, Kootenai Valley FPD, Mica FPD, Cataldo FPD, Ponderosa FPD)
- **BLM – Coeur d Alene District** (Coeur d Alene Field Office)
- **Coeur d Alene Tribe – ID-CDT**
- **USFWS-Kootenai National Wildlife Refuge**

Repeater Locations in North Idaho

Legend

- Repeater
- State Boundary
- Highways/Major Roads
- Interstate 90



04/11/2019

ID-CDC Coeur d'Alene Dispatch Area Aviation Channels -- All Narrow Band

ALPHA Name	SPOKEN Name	Use	RX Freq.	RX Tone	TX Freq.	TX Tone
NATL FLT FOL	National Flight Following	Flight Follow	168.6500	110.9	168.6500	110.9
SPT B FS	Sandpoint Baldy	NZ FF	172.4000	107.2	165.4875	110.9
MICA BLM	Mica BLM	CZ FF	164.5250	107.2	163.0250	107.2
MICA FS	Mica FS	CZ FF	169.9250	107.2	165.5625	167.9
WARD BLM	Wardner BLM	CZ FF	164.5250	107.2	163.0250	131.8
ST JOE B	St Joe Baldy	SZ FF	171.8000	107.2	162.0750	167.9
SUB BLM	St Joe Baldy BLM	SZ FF	164.5250	107.2	163.0250	114.8
IDL A/G	IDL Air to Ground	CDC Primary A/G	151.1450		151.1450	
A/G 54	Air to Ground Five Four	CDC Secondary A/G	168.5375		168.5375	
A/G 47	Air to Ground Four Seven	CDC Tertiary A/G	167.7250		167.7250	
A/G 17	Air to Ground One Seven	GVC Primary A/G	167.9875		167.9875	
WA DNR A/G	DNR Air to Ground	WA DNR A/G	159.2700	103.5	159.2700	103.5
HORTON	Horton	NZ Alternate	172.4000	107.2	165.4875	156.7
SADDLE	Saddle	NZ Alternate	172.4000	107.2	165.4875	131.8
BLK FS	Black F S	NZ Alternate	172.4000	107.2	165.4875	103.5
HALL MTN	Hall Mountain	NZ Alternate	172.4000	107.2	165.4875	123.0
LUNCH PK	Lunch Peak	NZ Alternate	172.4000	107.2	165.4875	136.5
LIGHTNIN	Lightning Mountain	NZ Alternate	172.4000	107.2	165.4875	167.9
LTL BLK	Little Blacktail	NZ Alternate	172.4000	107.2	165.4875	100.0
LAKEVIEW	Lakeview	NZ Alternate	159.4650	100.0	151.2650	100.0
BLACK IDL	Black I D L	NZ Alternate	159.3000	114.8	151.3250	123.0
SCHWITZ	Schweitzer	NZ Alternate	159.3375	100.0	151.4375	136.5
HOODOO	Hoodoo	NZ Alternate	159.3375	100.0	151.4375	127.3
LTL GARD	Little Guard	CZ Alternate	169.9250	107.2	165.5625	156.7
MONUMENT	Monument	CZ Alternate	169.9250	107.2	165.5625	131.8
FASET	Faset	CZ Alternate	169.9250	107.2	165.5625	123.0
WARD FS	Wardner F S	CZ Alternate	169.9250	107.2	165.5625	136.5
MICA IDL	Mica I D L	CZ Alternate	159.3000	127.3	151.3250	110.9
WARD IDL	Wardner I D L	CZ Alternate	159.1950	151.4	151.2125	110.9
MID SIS	Middle Sister	SZ Alternate	171.8000	107.2	162.0750	131.8
HUCKLBRY	Huckleberry	SZ Alternate	171.8000	107.2	162.0750	156.7
DUNN PK	Dunn Peak	SZ Alternate	171.8000	107.2	162.0750	103.5
MARKS	Marks Butte	SZ Alternate	171.8000	107.2	162.0750	123.0
SIMMONS	Simmons	SZ Alternate	171.8000	107.2	162.0750	110.9
SNOW PK	Snow Peak	SZ Alternate	171.8000	107.2	162.0750	136.5
BALDY	Baldy	SZ Alternate	159.2550	136.5	151.1750	100.0
ELK BUTE	Elk Butte	SZ Alternate	159.2550	100.0	151.1750	123.0
TEAKEAN	Teakean	SZ Alternate	159.3000	123.0	151.3250	100.0
MOS MTN	Moscow Mountain	SZ Alternate	159.1125	146.2	151.2125	107.2
CALSPL E	Calispell East	Northeast Disp/FF	171.4750	146.2	164.6250	103.5
LIBBY FF	Libby Flight Follow	Kootenai Disp/FF	172.2500		172.2500	123.0
FAN	FAN Hemlock	Grangeville Disp/FF	173.1625	146.2	166.0000	151.4
LOLO W	West Direct	Missoula Disp/FF	172.3875		172.3875	127.3

Coeur d'Alene	Boundary Cty	Coolin	Sandpoint	Nordman	Priest River	Shoshone Cty	S83	S72	St. Maries	Pullman	Deer Park	Plains	Felts Field	Idaho County
KCOE	65S	66S	KSZT	67S	IS6	S83	S72	S72	KPUW	KDEW	S34	KSFF	KGIC	
Air Guard 168.6250 TX Tone 110.9														
Initial Attack Air to Air 124.6250														COE CTAF 122.8
Border Freqs: 123.100 - Border Patrol Helicopters, 121.500 - Military Intercept														EMS 2 Rx/Tx 155.2800 Tx Tone 156.7
Transponder codes: Firefighting/North Zone Fire Air Patrol Squawk 1255, Other Air Patrol Squawk 1200														AMOC 1-800-553-9072

Coeur D Alene Airport (COE)

11569 N. Airport Drive Hayden, Idaho 83835
208-661-7400
(Intergaency Wildland Fire Center Address)

47 46.46 x 116 49.18

Airport Operations Manager: Phil Cummings



For 2019 the Coeur d Alene Airbase parking will be configured for initial attack as indicated above. Transient aircraft are to utilize the GA ramp (Resort Aviation). The north or south ramps on the opposite sides of the airfield may be utilized as needed for both air tankers and helicopters through an emergency land use agreement. Shoshone Co. Airport is preferred for extended attack helibases. For additional information see the Coeur d Alene Air Tanker Base and Helicopter Operation Plans.

North Idaho Maps



North Zone.png



Central Zone.png



South Zone.png

Motels

(There are many more if you Google- Coeur D Alene)

Spokane (walking distance from terminal)

Ramada
8909 W. Airport Drive
Spokane WA, 99206
(509)838-5211

Spokane (walking distance from terminal)

Windgate
2726 S. Flint Rd.
Spokane WA, 99224
(509)838-3226

Coeur d Alene

Days Inn
3849 3rd 2200 Northwest Blvd
Coeur d Alene, ID 83814
(208)215-3058

Coeur d Alene

Baymont Inn
2209 Sherman Ave.
Coeur d Alene, ID 83814
(208)667-6777

Coeur d Alene

Best Western Inn
506 W. Appleway
Coeur d Alene, ID 83814
(208)765-3200

Coeur d Alene

La Quinta Inn & Suites
333 W. Ironwood dr.
Coeur d Alene, ID 83814
(208)665-9000

Restaurants

(There are many more if you Google -Hayden or Coeur d Alene)

Hayden

Capones Pub & Grill
9520 Govt. Way
Hayden, ID 83835
(208)762-5999

Rancho Viejo
8882 N. Govt. Way
Hayden, ID 83835
(208)762-3310

Porch Public House
1658 E. Miles Ave.
Hayden, ID 83835
(208)772-7711

The Boathouse
3799 E. Hayden Lake Rd
Hayden, ID 83835
(208)772-5057

N. Coeur d Alene

Applebee's Restaurant
280 W Hanley Ave.
Coeur d Alene, ID 83815
(208)762-1000

Olive Garden
525 W Canfield Ave.
Coeur d Alene, ID 83815
(208)762-9300

MacKenzie River Pizza
405 W. Canfield Ave.
Coeur d Alene, ID 83815
(509)772-5111

S. Coeur d Alene

Grille from Ipanema
2380 N. Old Mill Loop
Coeur d Alene, ID 83814
(208)676-1122

Bullman's Wood Fired Pizza
2385 N. Old Mill Loop
Coeur d Alene, ID 83814
(208)930-0219

Red Robin
1501 W. Riverstone Dr.
Coeur d Alene, ID 83814
(208)765-2421

Vehicle Rentals

Spokane Airport

National Car Rental
9000 W Airport Dr.
Spokane WA. 99224
(888)445-5664

Spokane Airport

Enterprise Rent-A-Car
9000 W Airport Dr.
Spokane WA. 99224
(509)747-0343

Spokane Airport

Hertz
9000 W Airport Dr.
Spokane WA. 99224
(509)747-3101

Coeur d Alene Airport

Hertz
11101 N. Airport Rd.
Hayden ID 83835
(208)772-3731

Other surroundings communities with food and lodging include: Post Falls, Priest Lake, Nordman, Sand Point, Bonner's Ferry, Kellogg, St. Maries, St. Regis, MT and Avery (limited).

Phone Directory (For Nation and Regional Federal Contacts see the Interagency Aviation Technical Assistance Directory)

US Forest Service Idaho Panhandle NF 3815 Schreiber Way Coeur d Alene, ID 83835	Name	Work phone	Cell	Email
Forest Fire Management Officer Asst. Forest FMO Forest Aviation Officer North Zone FMO Central Zone FMO South Zone FMO Helitack Supervisor Asst. Helitack Supervisor Air Tanker Base Manager Asst. Air Tanker Base Manager Air Tanker Base Ramp Manager	Mike Behrens Mike Almas Greg Loper Matt Butler Sam Gibbons Greg Juvan Randy Gaulrapp Phil Norton Stan Goode Pat Montreuil Rick Sorenson	208-765-7499 208-765-7494 208-762-6926 208-443-6849 208-769-3035 208-245-6001 208-762-6937 208-762-6937 208-762-6901 208-762-6920 208-762-6912	208-659-1392 509-675-4485 208-620-8285 208-290-4668 509-512-1612 406-582-6758 208-920-0077 208- 631-5605 208-762-6937 208-819-0471 208-630-3589	mikebehrens@fs.fed.us malmas@fs.fed.us gloper@fs.fed.us mobutler@fs.fed.us sgibbons@fs.fed.us gjuvan@fs.fed.us rgaulrapp@fs.fed.us pnorton@fs.fed.us hgoode@fs.fed.us patrickmontreuil@fs.fed.us rsorenson@fs.fed.us
Idaho Department of Lands- 3284 Industrial Loop Coeur d Alene, ID 83835	JT Wensman Kevin Benton Vacant Seth Hamilton	208-666-8650 208-666-8651 208-769-8664 208-666-8666	208-930-3108 208-290-8969 208-660-3990 208-596-3775	jwensman@idl.idaho.gov kbenton@idl.idaho.gov @idl.idaho.gov shamilton@idl.idaho.gov
BLM-Coeur d Alene 3815 Schreiber Way Coeur d Alene, ID 83835	Mike Behrens Lonnie Newton Greg Loper	208-765-7499 208-769-5017 208-762-6926	208-659-1392 208-501-4019 208-620-8285	mikebehrens@fs.fed.us lnewton@blm.gov gloper@fs.fed.us
CDT- Coeur d Alene Tribe 850 A Street Plummer, Idaho 83851	Tom Pakootas	208-686-5306	208-699-3078	tapakootas@cdatribe-nsn.gov
ID-CDC 11569 N. Airport Drive Hayden, ID 83835	24hr # Destry Scheel Melanie Roose Gary Weber Sarah Wolf	208-772-3283 208-762-6904 208-762-6903 208-762-6911 208-762-6936	Fax 208-762-6909	idcdc@fs.fed.us dscheel@fs.fed.us mroose@fs.fed.us gaweber@fs.fed.us sarahmwolf@fs.fed.us

AIRCRAFT DAILY USE and COST SUMMARY

Activity/Mission: Large Fire Initial Attack Project **Date:** _____
Base: _____ **Incident:** _____ **Agency:** _____
N #: _____ **Make/Model:** _____ **Manager's Name:** _____
Type: 1 2 3 CWN Exclusive Use Other (Specify): _____
Aircraft Resource Order Number: A- _____

	Quantity	Rate	Cost:
Revenue Flight Hours:			
*Availability (Hours or Day):			
Pilot Extended Standby:			
Driver Extended Standby:			
Mechanic Extended Standby:			
Per Diem # of Persons:			
Service Truck Miles:			
Parking Fees			
Fuel Flow Fees			
Additional Cost:			
Additional Cost:			
Daily Grand Total Cost:			

* Do Not calculate for exclusive use contracts where availability is paid from pre-suppression funds

Use Summary:

Total PAX Transported	Total Pounds Cargo	Total Gallons Water	Total Gallons Retardant	Total Gallons Foam

Aerial Ignition		
Acres Treated	PSD Spheres Used	Gallons Helitorch Gel Used

Cost Apportionment (If Applicable)

Agency	Percent	Cost

HCM-15 (12/2015) REQUIRED

Aircraft daily use and Cost Summary
 ATGS/AOBS and Helicopter Managers need to submit to FAO on a daily basis

Aviation in itself is not inherently dangerous. But to an even greater degree than the sea, it is terribly unforgiving OF any carelessness, incapacity or neglect