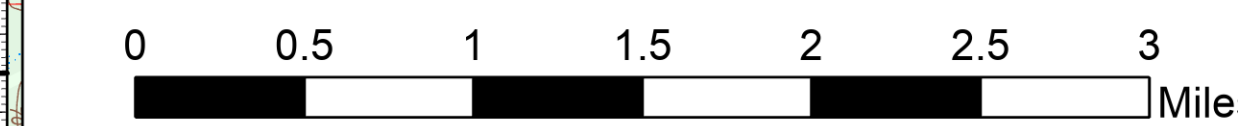


Operations

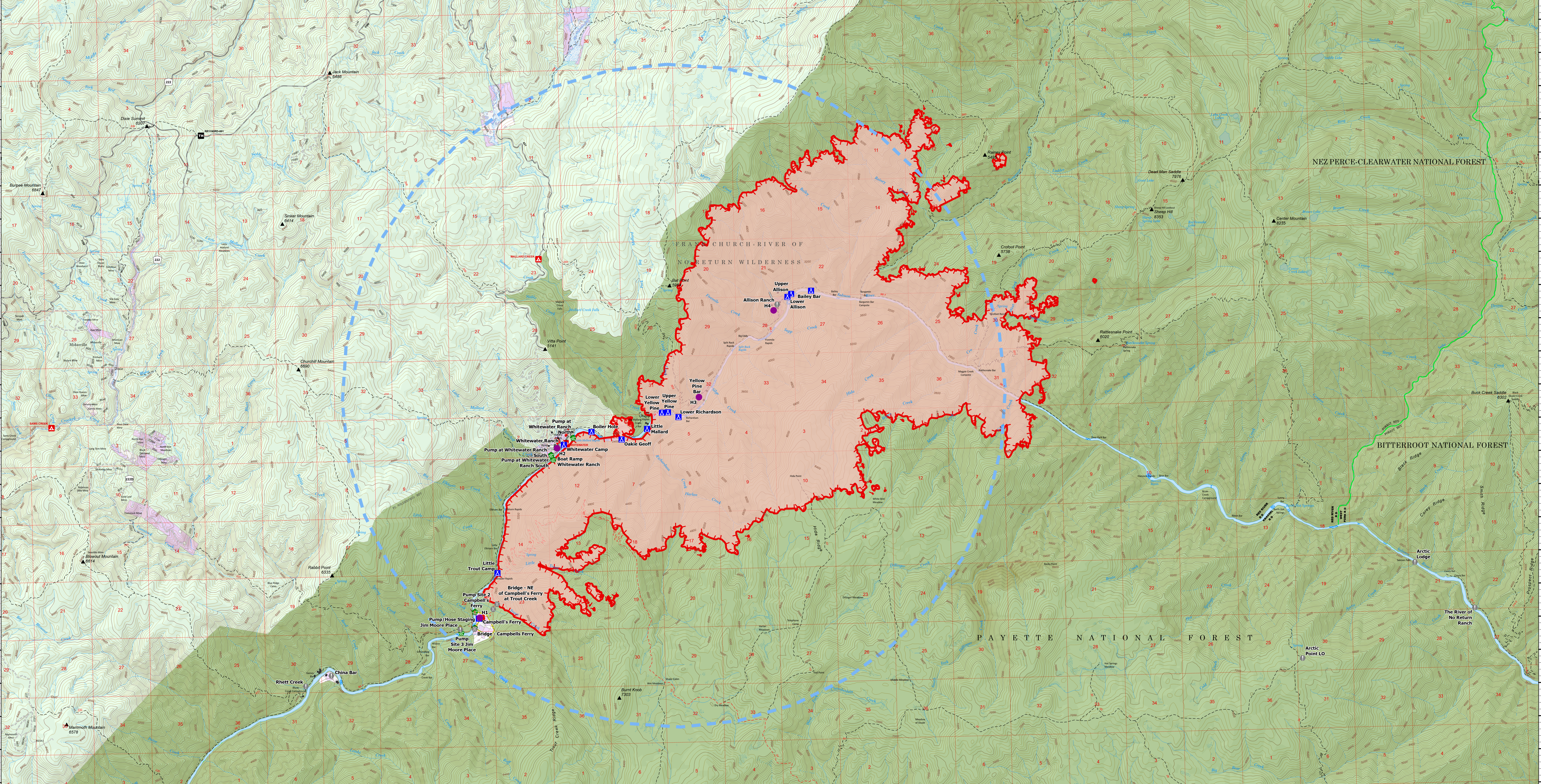
Elkhorn
IDPAF002673

08/01/2023

22361 acres at 08/01/2023 01:23 AM



Fire Perimeter	Hose Lay/Other Prep	National Designated Trail	Stream/River, Artificial Path
Vegetation	Temporary Right Restriction	Power Road	Stream/River, Interference
Camp	Fire Edge (Field Collection)	Gravel Road	Administrative FS Boundary
Staging Area	Uncollected Fireline	Dirt Road	Ranger District Boundary
Value at Risk	Structure	Unimproved Roads	Wilderness Boundary
Bridge	Campground	Closed Roads	County Boundary
Water Development or Draft Site	Boating Site	Lake / Pond	Private Forested Lands
Completed Road as Line	Snowfall	Waterfall	Forest Service Land
Access or Improved Road	Trail	Stream / River	



Point Type	Label	Latitude WGS84 DDM	Longitude WGS84 DDM	Point Type	Label	Latitude WGS84 DDM	Longitude WGS84 DDM
Value at Risk	Bridge - Campbells Ferry	45° 29.178' N	115° 20.048' W	Value at Risk	Allison Ranch	45° 33.976' N	115° 13.407' W
Value at Risk	Bridge - NE of Campbell's Ferry at Trout Creek	45° 29.546' N	115° 19.554' W	Value at Risk	Arctic Lodge	45° 29.865' N	114° 59.859' W
Value at Risk	Bridge - NE of Campbell's Ferry at un-named creek x-ing	45° 29.472' N	115° 19.639' W	Value at Risk	Arctic Point LO	45° 28.460' N	115° 02.318' W
Camp	Bailey Bar	45° 34.170' N	115° 12.673' W	Value at Risk	Campbell's Ferry	45° 29.345' N	115° 19.928' W
Camp	Boiler Hole	45° 32.113' N	115° 17.453' W	Value at Risk	China Bar	45° 28.517' N	115° 23.135' W
Camp	Little Mallard	45° 32.140' N	115° 16.256' W	Value at Risk	Riverville Bar	45° 24.726' N	115° 28.125' W
Camp	Little Trout Camp	45° 30.013' N	115° 19.531' W	Value at Risk	Jim Moore Place	45° 29.175' N	115° 20.352' W
Camp	Lower Allison	45° 34.085' N	115° 13.182' W	Value at Risk	Rhett Creek	45° 28.365' N	115° 23.687' W
Camp	Lower Richardson	45° 32.308' N	115° 15.575' W	Value at Risk	The River of No Return Ranch	45° 29.157' N	114° 58.600' W
Camp	Lower Yellow Pine	45° 32.379' N	115° 15.929' W	Value at Risk	Whitewater Ranch	45° 31.913' N	115° 18.130' W
Camp	Oakie Geoff	45° 31.989' N	115° 16.810' W	Value at Risk	Yellow Pine Bar	45° 32.602' N	115° 15.128' W
Camp	Upper Allison	45° 34.128' N	115° 13.102' W	Water Development or Draft Site	Boat Ramp Whitewater Ranch	45° 31.710' N	115° 18.284' W
Camp	Upper Yellow Pine	45° 32.382' N	115° 15.800' W	Water Development or Draft Site	Pump at Whitewater Ranch North	45° 32.032' N	115° 17.848' W
Camp	Whitewater Camp	45° 31.926' N	115° 18.058' W	Water Development or Draft Site	Pump at Whitewater Ranch South	45° 31.780' N	115° 18.328' W
Helispot	H1	45° 29.345' N	115° 19.928' W	Water Development or Draft Site	Pump at Whitewater Ranch South	45° 31.779' N	115° 18.328' W
Helispot	H2	45° 31.913' N	115° 18.130' W	Water Development or Draft Site	Pump Site 1 Campbell's Ferry	45° 29.196' N	115° 20.042' W
Water Development or Draft Site	H3	45° 32.602' N	115° 15.128' W	Water Development or Draft Site	Pump Site 1 Campbell's Ferry	45° 29.194' N	115° 20.042' W
Water Development or Draft Site	H4	45° 33.886' N	115° 13.485' W	Water Development or Draft Site	Pump Site 2 Campbell's Ferry	45° 29.439' N	115° 20.031' W
Staging Area	Pump/Hose Staging	45° 29.335' N	115° 19.949' W	Water Development or Draft Site	Pump Site 3 Jim Moore Place	45° 29.125' N	115° 20.330' W

North American 1983 Datum, Lat/Long Grid

PAF GIS
8/1/2023 0547
Acres - IR/Recon Flights
Thermal Detection