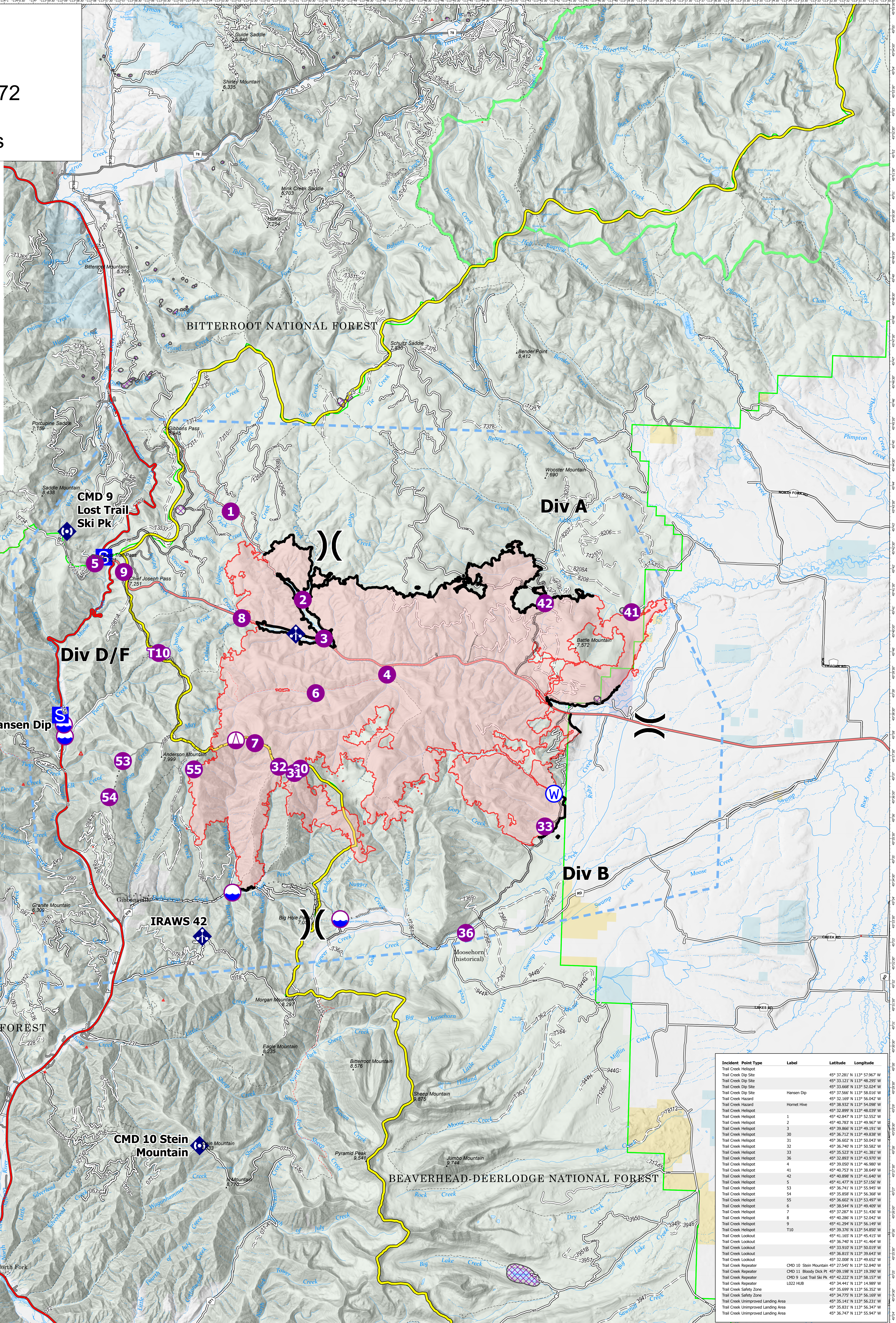


# AirOps

Trail Creek  
MTBDF-006272  
9/04/2021  
40736 Acres

- Dip Site
- Helispot
- Sling Site
- Division Break
- Staging Area
- Mobile Weather Unit
- Repeater
- Water Source
- Completed Dozer Line
- Completed Fuel Break
- Completed Hand Line
- Completed Mixed Construction Line
- Completed Road as Line
- Planned Dozer Line
- Planned Fuel Break
- Planned Road as Line
- Planned Secondary Line
- Repair Line
- Temporary Flight Restriction
- Contained Line
- Wildfire Daily Fire Perimeter
- Aerial Fire Retardant Avoidance Areas: Terrestrial
- FS Boundary
- Continental Divide

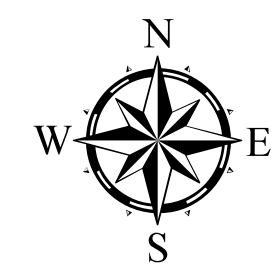


Incident	Point Type	Label	Latitude	Longitude
Trail Creek Helispot			49° 37.281' N	113° 57.967' W
Trail Creek Dip Site			49° 33.121' N	113° 48.299' W
Trail Creek Dip Site			49° 33.668' N	113° 50.026' W
Trail Creek Dip Site			49° 37.569' N	113° 58.016' W
Trail Creek Hazard			49° 32.169' N	113° 56.042' W
Trail Creek Helispot		Hornet Hive	49° 38.932' N	113° 54.098' W
Trail Creek Helispot		1	49° 32.899' N	113° 48.039' W
Trail Creek Helispot		2	49° 40.783' N	113° 52.552' W
Trail Creek Helispot		3	49° 39.866' N	113° 49.191' W
Trail Creek Helispot		30	49° 36.712' N	113° 49.838' W
Trail Creek Helispot		31	49° 36.602' N	113° 50.043' W
Trail Creek Helispot		32	49° 36.749' N	113° 50.582' W
Trail Creek Helispot		33	49° 35.839' N	113° 49.381' W
Trail Creek Helispot		36	49° 32.893' N	113° 43.970' W
Trail Creek Helispot		4	49° 39.050' N	113° 46.980' W
Trail Creek Helispot		41	49° 40.753' N	113° 38.649' W
Trail Creek Helispot		42	49° 40.289' N	113° 52.043' W
Trail Creek Helispot		5	49° 41.477' N	113° 57.156' W
Trail Creek Helispot		53	49° 36.741' N	113° 55.945' W
Trail Creek Helispot		54	49° 35.859' N	113° 56.368' W
Trail Creek Helispot		55	49° 36.602' N	113° 53.497' W
Trail Creek Helispot		6	49° 38.544' N	113° 49.409' W
Trail Creek Helispot		7	49° 37.287' N	113° 51.436' W
Trail Creek Helispot		8	49° 40.289' N	113° 52.043' W
Trail Creek Helispot		9	49° 41.294' N	113° 56.149' W
Trail Creek Lookout		T10	49° 39.376' N	113° 54.850' W
Trail Creek Lookout			49° 41.185' N	113° 49.415' W
Trail Creek Lookout			49° 36.749' N	113° 41.464' W
Trail Creek Lookout			49° 33.910' N	113° 50.019' W
Trail Creek Lookout			49° 36.815' N	113° 39.643' W
Trail Creek Repeater		CMD 10 Stein Mountain	49° 32.808' N	113° 49.652' W
Trail Creek Repeater		CMD 10 Stein Mountain	49° 27.545' N	113° 52.840' W
Trail Creek Repeater		CMD 11 Bloody Dick Pt.	49° 09.198' N	113° 19.390' W
Trail Creek Repeater		CMD 9 Lost Trail Ski Pk.	49° 42.232' N	113° 48.157' W
Trail Creek Repeater		LO22 HUB	49° 34.441' N	113° 54.889' W
Trail Creek Safety Zone			49° 35.699' N	113° 56.352' W
Trail Creek Safety Zone			49° 34.729' N	113° 56.169' W
Trail Creek Unimproved Landing Area			49° 35.141' N	113° 56.233' W
Trail Creek Unimproved Landing Area			49° 35.831' N	113° 56.347' W

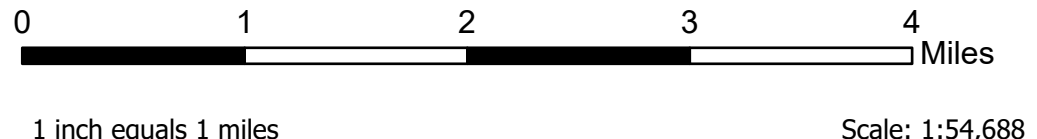
Flight Restriction Information  
 Alder Creek - 1/7629- 12,500ft ceiling  
 Trail Creek - 1/7630 - 11,500ft ceiling  
 Black Mountain - 1/1730 - 10,500ft ceiling



NR Team 5  
9/4/2021 0745  
North American 1983 Datum. LatLong Grid



Fire perimeter updated from Acres from IR on 09/03/2021 2223 MDT



Scale: 1:54,688