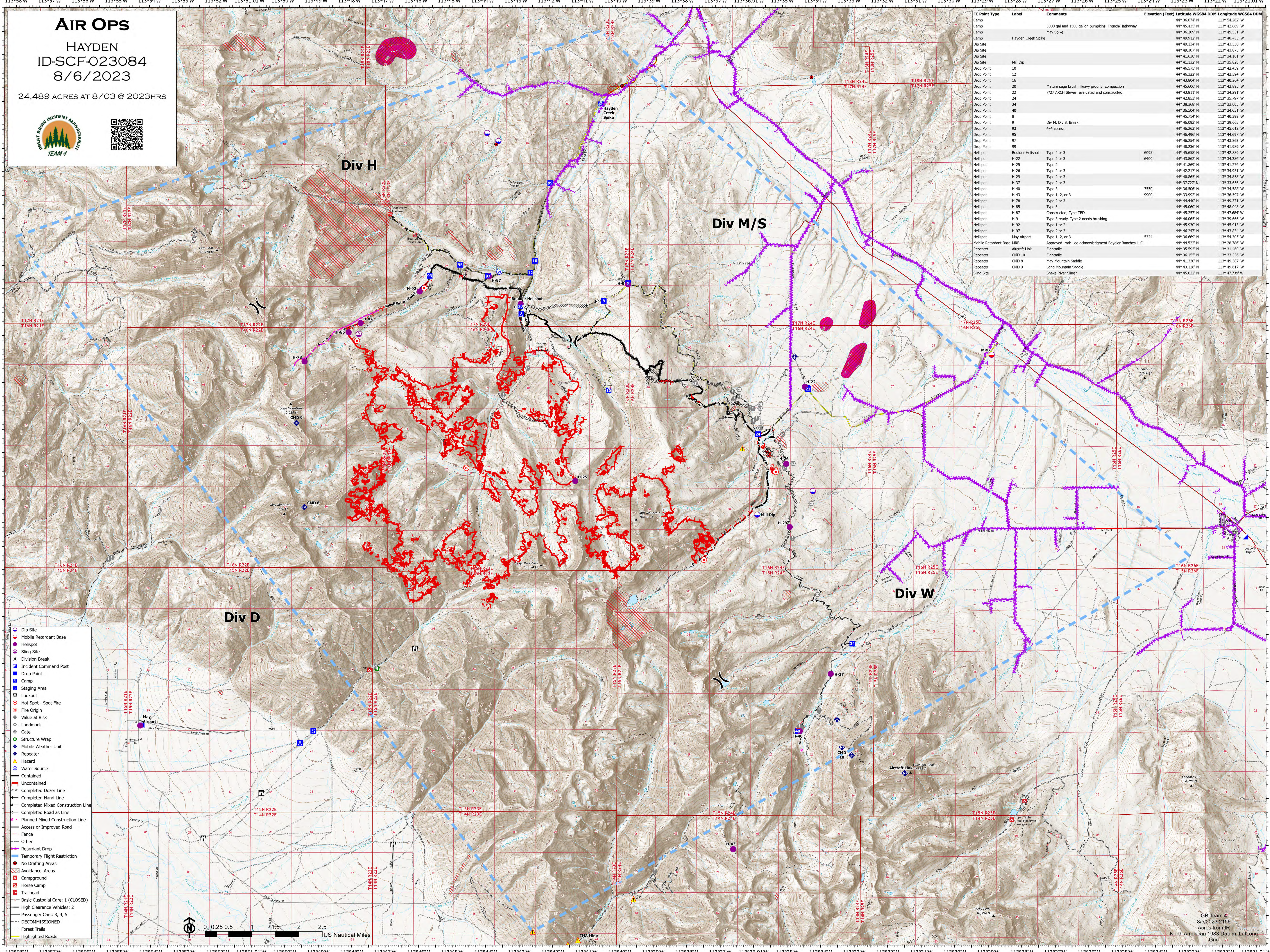


AIR OPS

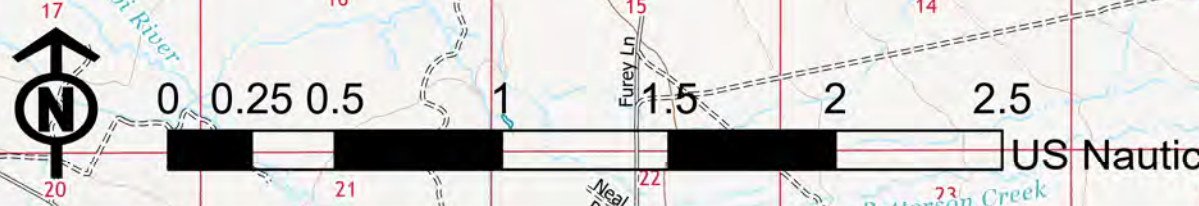
HAYDEN
ID-SCF-023084
8/6/2023

24,489 ACRES AT 8/03 @ 2023HRS



FC Point Type	Label	Comments	Elevation (Feet)	Latitude WGS84 DDM	Longitude WGS84 DDM
Camp		3000 gal and 1500 gallon pumpkins. French/Hathaway	44° 45.435' N	113° 42.869' W	
Camp	May Spike		44° 36.289' N	113° 49.531' W	
Camp	Hayden Creek Spike		44° 49.912' N	113° 40.455' W	
Dip Site			44° 49.134' N	113° 43.538' W	
Dip Site			44° 49.307' N	113° 43.875' W	
Dip Site			44° 41.630' N	113° 34.261' W	
Dip Site	Mill Dip		44° 41.132' N	113° 35.828' W	
Drop Point	10		44° 46.575' N	113° 42.459' W	
Drop Point	12		44° 46.322' N	113° 42.594' W	
Drop Point	16		44° 43.804' N	113° 40.264' W	
Drop Point	20	Mature sage brush. Heavy ground compaction	44° 45.606' N	113° 42.895' W	
Drop Point	22	7/27 ARCH Steer: evaluated and constructed	44° 43.211' N	113° 34.291' W	
Drop Point	24		44° 42.853' N	113° 35.797' W	
Drop Point	34		44° 38.368' N	113° 33.005' W	
Drop Point	40		44° 36.504' N	113° 34.651' W	
Drop Point	8		44° 45.714' N	113° 40.399' W	
Drop Point	9	Div M, Div S, Break.	44° 46.093' N	113° 39.665' W	
Drop Point	93	Keel access	44° 46.263' N	113° 44.697' W	
Drop Point	95		44° 46.496' N	113° 44.697' W	
Drop Point	97		44° 46.254' N	113° 43.863' W	
Drop Point	99		44° 48.236' N	113° 41.989' W	
Helispot	Boulder Helispot	Type 2 or 3	6095	44° 45.658' N	113° 42.889' W
Helispot	H-22	Type 2 or 3	6400	44° 43.862' N	113° 34.384' W
Helispot	H-25	Type 2		44° 41.889' N	113° 41.274' W
Helispot	H-26	Type 2 or 3		44° 42.217' N	113° 34.951' W
Helispot	H-29	Type 2 or 3		44° 40.865' N	113° 34.858' W
Helispot	H-37	Type 2 or 3		44° 37.727' N	113° 33.656' W
Helispot	H-40	Type 3	7550	44° 36.506' N	113° 34.588' W
Helispot	H-43	Type 1, 2, or 3	9900	44° 33.992' N	113° 36.597' W
Helispot	H-78	Type 2 or 3		44° 44.402' N	113° 49.271' W
Helispot	H-85	Type 3		44° 45.060' N	113° 48.048' W
Helispot	H-87	Constructed; Type TBD		44° 45.257' N	113° 47.684' W
Helispot	H-9	Type 3 ready; Type 2 needs brushing		44° 46.065' N	113° 39.666' W
Helispot	H-92	Type 1 or 2		44° 45.930' N	113° 45.913' W
Helispot	H-97	Type 2 or 3		44° 46.247' N	113° 43.894' W
Helispot	May Airport	Type 1, 2, or 3	5324	44° 36.669' N	113° 54.305' W
Mobile Retardant Base	MRB	Approved - mrb Lee acknowledgment Beyer Ranches LLC		44° 44.522' N	113° 28.786' W
Repeater	Aircraft Link			44° 35.593' N	113° 31.460' W
Repeater	CMD 10	Eightmile		44° 36.155' N	113° 33.360' W
Repeater	CMD 8	May Mountain Saddle		44° 41.330' N	113° 49.387' W
Repeater	CMD 9	Long Mountain Saddle		44° 43.128' N	113° 49.617' W
Sling Site		Snake River Slings		44° 45.022' N	113° 47.739' W

- Dip Site
- Mobile Retardant Base
- Helispot
- Sling Site
- Division Break
- Incident Command Post
- Drop Point
- Camp
- Staging Area
- Lookout
- Hot Spot - Spot Fire
- Fire Origin
- Value at Risk
- Landmark
- Gate
- Structure Wrap
- Mobile Weather Unit
- Repeater
- Hazard
- Water Source
- Contained
- Uncontained
- Completed Dozer Line
- Completed Hand Line
- Completed Mixed Construction Line
- Completed Road as Line
- Planned Mixed Construction Line
- Access or Improved Road
- Fence
- Other
- Retardant Drop
- Temporary Flight Restriction
- No Drafting Areas
- Avoidance Areas
- Campground
- Horse Camp
- Trailhead
- Basic Custodial Care: 1 (CLOSED)
- High Clearance Vehicles: 2
- Passenger Cars: 3, 4, 5
- DECOMMISSIONED
- Forest Trails
- Highlighted Roads



GB Team 4
8/5/2023 2156
Acres from IR
North American 1983 Datum, Lat/Long
Grid