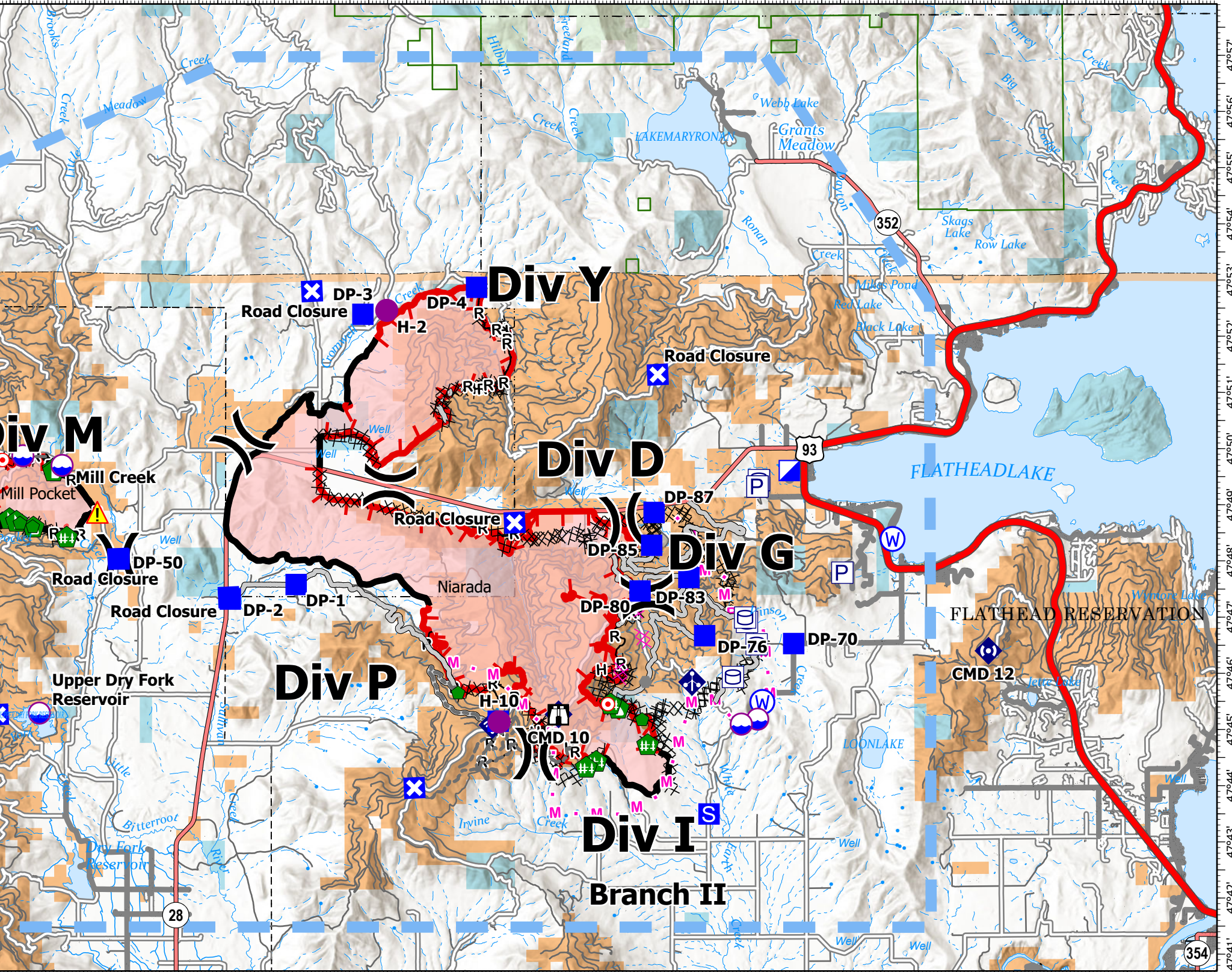


# AIR OPERATIONS - NIARADA / MILL POCKET

8/8/2023

-114°57.5' -114°56' -114°54.5' -114°53' -114°51.5' -114°50' -114°48.5' -114°47' -114°45.5' -114°44' -114°42.5' -114°41' -114°39.5' -114°38' -114°36.5' -114°35' -114°33.5' -114°32' -114°30.5' -114°29' -114°27.5' -114°26' -114°24.5' -114°23' -114°21.5' -114°20' -114°18.5' -114°17' -114°15.5' -114°14' -114°12.5' -114°11'

IncidentName	FeatureCategory	Label	Latitude	Longitude
Mill Pocket	Dip Site		47° 49.892' N	114° 41.634' W
Mill Pocket	Repeater	CMD 9	47° 51.030' N	114° 47.277' W
Mill Pocket	Dip Site	Mill Creek	47° 49.722' N	114° 40.598' W
Mill Pocket	Dip Site	Upper Dry Fork Reservoir	47° 45.315' N	114° 41.182' W
Niarada	Incident Command Post		47° 49.633' N	114° 21.383' W
Niarada	Dip Site		47° 45.210' N	114° 22.231' W
Niarada	Dip Site		47° 45.122' N	114° 22.662' W
Niarada	Repeater	CMD 10	47° 45.300' N	114° 27.484' W
Niarada	Repeater	CMD 12	47° 46.416' N	114° 16.135' W
Niarada	Helispot	H-10	47° 45.167' N	114° 29.052' W
Niarada	Helispot	H-2	47° 52.489' N	114° 32.021' W



**Niarada**  
**MT-FHA-000100**  
 Fire Perimeter as of  
 08/07/2023 2306 hrs  
 20,365 Acres

**Mill Pocket**  
**MT-FHA-000101**  
 Fire Perimeter as of  
 08/07/2023 2306 hrs  
 2,135 Acres

- |                       |                      |                     |                        |                                 |                               |                       |
|-----------------------|----------------------|---------------------|------------------------|---------------------------------|-------------------------------|-----------------------|
| Pump                  | Drop Point           | Repair Point        | Hazard                 | Planned Mixed Construction Line | Temporary Flight Restriction  | Secondary Dirt        |
| Water Tank            | Closure              | Fence - Cut/Damaged | Water Source           | Planned Road as Line            | Wildfire Daily Fire Perimeter | Runway                |
| Dip Site              | Staging Area         | Dozer Push          | Completed Dozer Line   | Access or Improved Road         | Primary Highway               | County Boundary       |
| Helispot              | Lookout              | Mobile Weather Unit | Completed Hand Line    | Fence                           | Secondary Highway             | American Indian Lands |
| Division Break        | Hot Spot - Spot Fire | Internet Access     | Completed Road as Line | Other                           | Secondary Paved               |                       |
| Incident Command Post | Other                | Repeater            | Planned Dozer Line     | Repair Line                     | Secondary Dirt                |                       |

