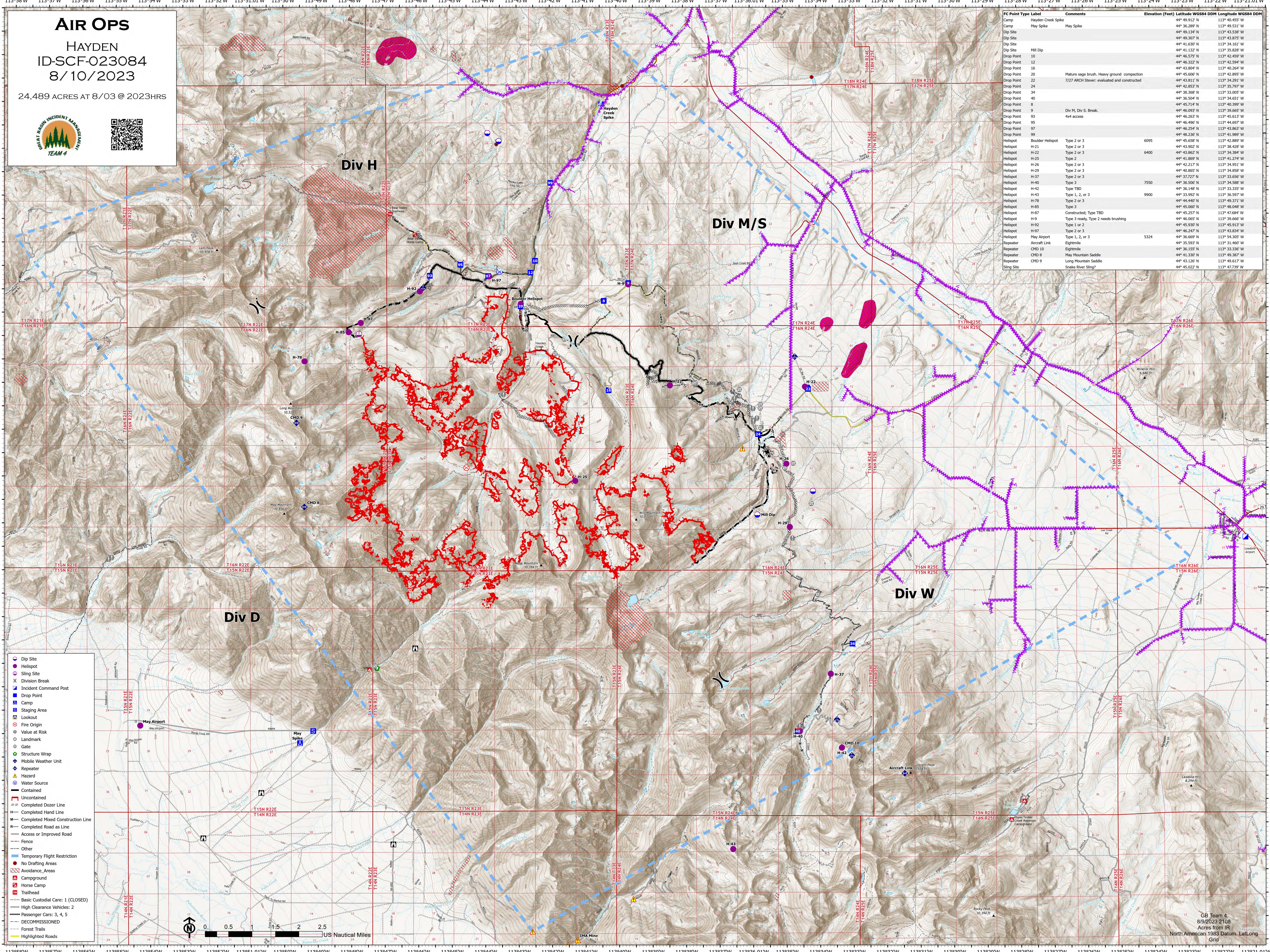


# AIR OPS

HAYDEN  
ID-SCF-023084  
8/10/2023

24,489 ACRES AT 8/03 @ 2023HRS



FC Point Type Label	Comments	Elevation (Feet)	Latitude WGS84 DDM	Longitude WGS84 DDM	
Camp	Hayden Creek Spike	44° 49.312' N	113° 40.455' W		
Dip Site	May Spike	44° 36.289' N	113° 49.311' W		
Dip Site		44° 49.134' N	113° 43.538' W		
Dip Site		44° 49.307' N	113° 43.875' W		
Dip Site		44° 41.630' N	113° 34.161' W		
Dip Site	Mill Dip	44° 41.132' N	113° 35.828' W		
Drop Point		44° 46.579' N	113° 42.499' W		
Drop Point		44° 46.322' N	113° 42.594' W		
Drop Point		44° 43.804' N	113° 40.264' W		
Drop Point		44° 45.606' N	113° 42.895' W		
Drop Point	Mature sage brush. Heavy ground compaction	44° 43.811' N	113° 34.291' W		
Drop Point	7/27 ARCH Steer: evaluated and constructed	44° 42.853' N	113° 35.797' W		
Drop Point		44° 36.508' N	113° 33.005' W		
Drop Point		44° 36.504' N	113° 34.651' W		
Drop Point		44° 45.714' N	113° 40.399' W		
Drop Point		44° 46.093' N	113° 39.665' W		
Drop Point	Div M, Div S. Break.	44° 46.263' N	113° 45.613' W		
Drop Point	4x4 access	44° 46.496' N	113° 44.697' W		
Drop Point		44° 46.254' N	113° 43.863' W		
Drop Point		44° 48.236' N	113° 41.989' W		
Drop Point		44° 48.236' N	113° 41.989' W		
Helispot	Boulder Helispot	6995	44° 45.658' N	113° 42.889' W	
Helispot	H-21	Type 2 or 3	44° 43.902' N	113° 38.428' W	
Helispot	H-22	Type 2 or 3	44° 43.862' N	113° 34.384' W	
Helispot	H-25	Type 2	44° 41.869' N	113° 41.274' W	
Helispot	H-26	Type 2 or 3	44° 42.317' N	113° 34.951' W	
Helispot	H-29	Type 2 or 3	44° 40.865' N	113° 34.858' W	
Helispot	H-37	Type 2 or 3	44° 37.727' N	113° 33.656' W	
Helispot	H-40	Type 3	7550	44° 36.506' N	113° 34.588' W
Helispot	H-42	Type TBD		44° 36.148' N	113° 33.335' W
Helispot	H-43	Type 1, 2, or 3	9900	44° 33.992' N	113° 36.997' W
Helispot	H-78	Type 2 or 3		44° 42.317' N	113° 34.951' W
Helispot	H-85	Type 3		44° 45.067' N	113° 48.048' W
Helispot	H-87	Constructed; Type TBD		44° 45.257' N	113° 47.684' W
Helispot	H-9	Type 3 ready; Type 2 needs brushing		44° 46.065' N	113° 39.666' W
Helispot	H-92	Type 1 or 2		44° 45.930' N	113° 45.913' W
Helispot	H-97	Type 2 or 3		44° 46.247' N	113° 43.834' W
Helispot	May Airport	Type 1, 2, or 3	5324	44° 36.669' N	113° 54.355' W
Repeater	Aircraft Link	Eightmile		44° 35.937' N	113° 31.460' W
Repeater	CMD 10	Eightmile		44° 36.155' N	113° 33.336' W
Repeater	CMD 8	May Mountain Saddle		44° 41.330' N	113° 49.387' W
Repeater	CMD 9	Long Mountain Saddle		44° 43.126' N	113° 49.617' W
Sling Site	Snake River Sling?		44° 45.022' N	113° 47.739' W	

- Dip Site
- Helispot
- Sling Site
- Division Break
- Incident Command Post
- Drop Point
- Camp
- Staging Area
- Lookout
- Fire Origin
- Value at Risk
- Landmark
- Gate
- Structure Wrap
- Mobile Weather Unit
- Repeater
- Hazard
- Water Source
- Contained
- Uncontained
- Completed Dozer Line
- Completed Hand Line
- Completed Mixed Construction Line
- Completed Road as Line
- Access or Improved Road
- Fence
- Other
- Temporary Flight Restriction
- No Drafting Areas
- Avoidance Areas
- Campground
- Horse Camp
- Trailhead
- Basic Custodial Care: 1 (CLOSED)
- High Clearance Vehicles: 2
- Passenger Cars: 3, 4, 5
- DECOMMISSIONED
- Forest Trails
- Highlighted Roads



GB Team 4  
8/9/2023 2108  
Acres from IR  
North American 1983 Datum, Lat/Long  
Grid