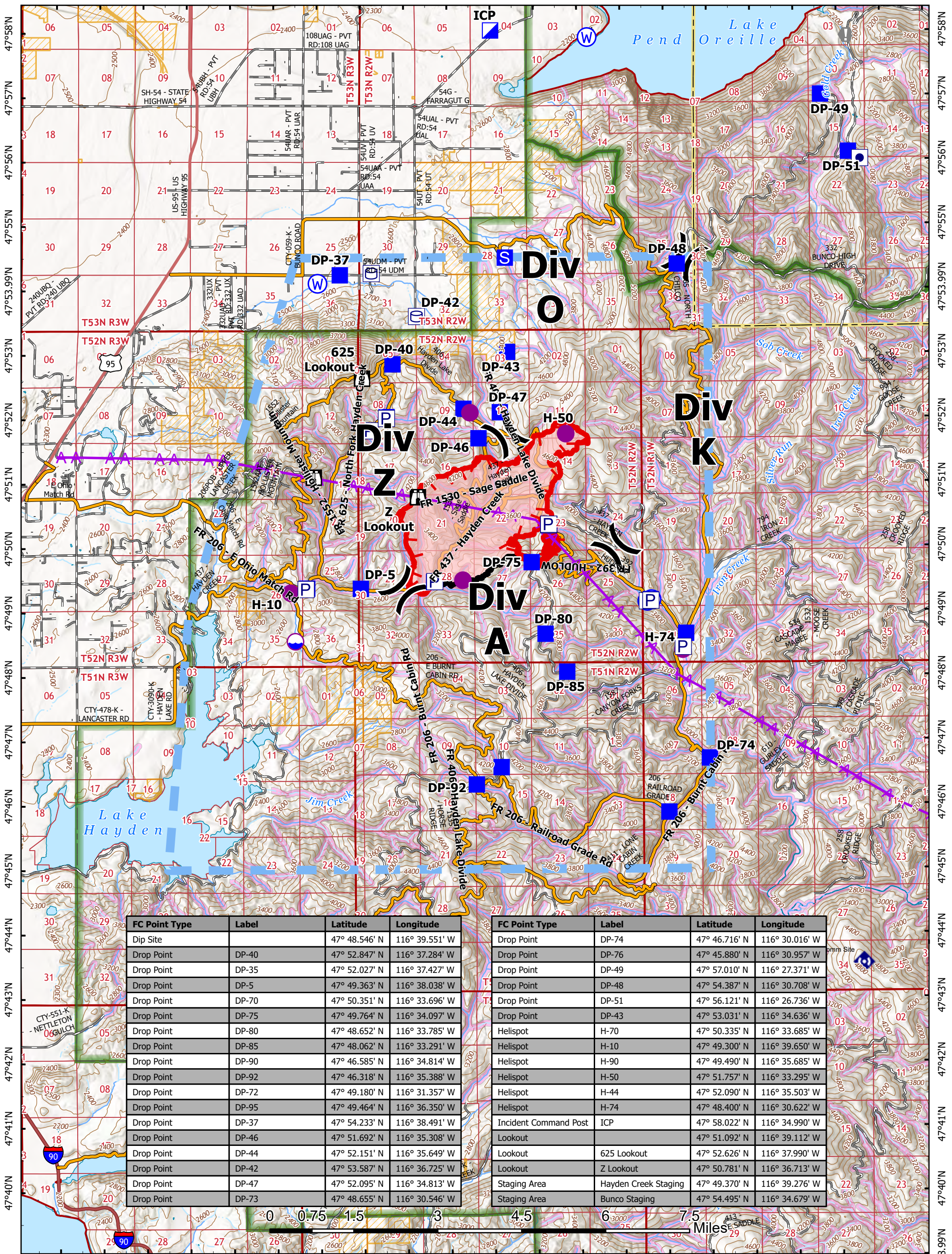


116°45'W 116°44'W 116°43'W 116°42'W 116°41'W 116°40'W 116°39'W 116°38'W 116°37'W 116°36'W 116°35'W 116°34'W 116°33'W 116°32'W 116°31'W 116°30'W 116°29'W 116°28'W 116°27'W 116°26'W 116°25'W



FC Point Type	Label	Latitude	Longitude
Dip Site		47° 48.546' N	116° 39.551' W
Drop Point	DP-40	47° 52.847' N	116° 37.284' W
Drop Point	DP-35	47° 52.027' N	116° 37.427' W
Drop Point	DP-5	47° 49.363' N	116° 38.038' W
Drop Point	DP-70	47° 50.351' N	116° 33.696' W
Drop Point	DP-75	47° 49.764' N	116° 34.097' W
Drop Point	DP-80	47° 48.652' N	116° 33.785' W
Drop Point	DP-85	47° 48.062' N	116° 33.291' W
Drop Point	DP-90	47° 46.585' N	116° 34.814' W
Drop Point	DP-92	47° 46.318' N	116° 35.388' W
Drop Point	DP-72	47° 49.180' N	116° 31.357' W
Drop Point	DP-95	47° 49.464' N	116° 36.350' W
Drop Point	DP-37	47° 54.233' N	116° 38.491' W
Drop Point	DP-46	47° 51.692' N	116° 35.308' W
Drop Point	DP-44	47° 52.151' N	116° 35.649' W
Drop Point	DP-42	47° 53.587' N	116° 36.725' W
Drop Point	DP-47	47° 52.095' N	116° 34.813' W
Drop Point	DP-73	47° 48.655' N	116° 30.546' W

FC Point Type	Label	Latitude	Longitude
Drop Point	DP-74	47° 46.716' N	116° 30.016' W
Drop Point	DP-76	47° 45.880' N	116° 30.957' W
Drop Point	DP-49	47° 57.010' N	116° 27.371' W
Drop Point	DP-48	47° 54.387' N	116° 30.708' W
Drop Point	DP-51	47° 56.121' N	116° 26.736' W
Drop Point	DP-43	47° 53.031' N	116° 34.636' W
Helispot	H-70	47° 50.335' N	116° 33.685' W
Helispot	H-10	47° 49.300' N	116° 39.650' W
Helispot	H-90	47° 49.490' N	116° 35.685' W
Helispot	H-50	47° 51.757' N	116° 33.295' W
Helispot	H-44	47° 52.090' N	116° 35.503' W
Helispot	H-74	47° 48.400' N	116° 30.622' W
Incident Command Post	ICP	47° 58.022' N	116° 34.990' W
Lookout		47° 51.092' N	116° 39.112' W
Lookout	625 Lookout	47° 52.626' N	116° 37.990' W
Lookout	Z Lookout	47° 50.781' N	116° 36.713' W
Staging Area	Hayden Creek Staging	47° 49.370' N	116° 39.276' W
Staging Area	Bunco Staging	47° 54.495' N	116° 34.679' W

116°45'W 116°44'W 116°43'W 116°42'W 116°41'W 116°40'W 116°39'W 116°38'W 116°37'W 116°36'W 116°35'W 116°34'W 116°33'W 116°32'W 116°31'W 116°30'W 116°29'W 116°28'W 116°27'W 116°26'W

RIDGE CREEK

IDIPF000447

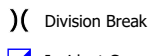
3,248 Acres

8/16/2023 2037 hrs

Acres from IR
NAD 1983 LatLong Grid



Forest Service



Division Break



Lookout



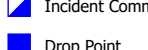
Temporary Flight Restriction Retardant Avoidance Area



State or Territory



Dip Site



Drop Point



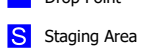
Value at Risk



Water Source



Helispot



Staging Area



Aerial Hazard



Uncontained



Wildfire Daily Fire Perimeter



Terrestrial



Aquatic



Department of Defense



Timber Company Lands



Main Access Roads



EASTERN AREA