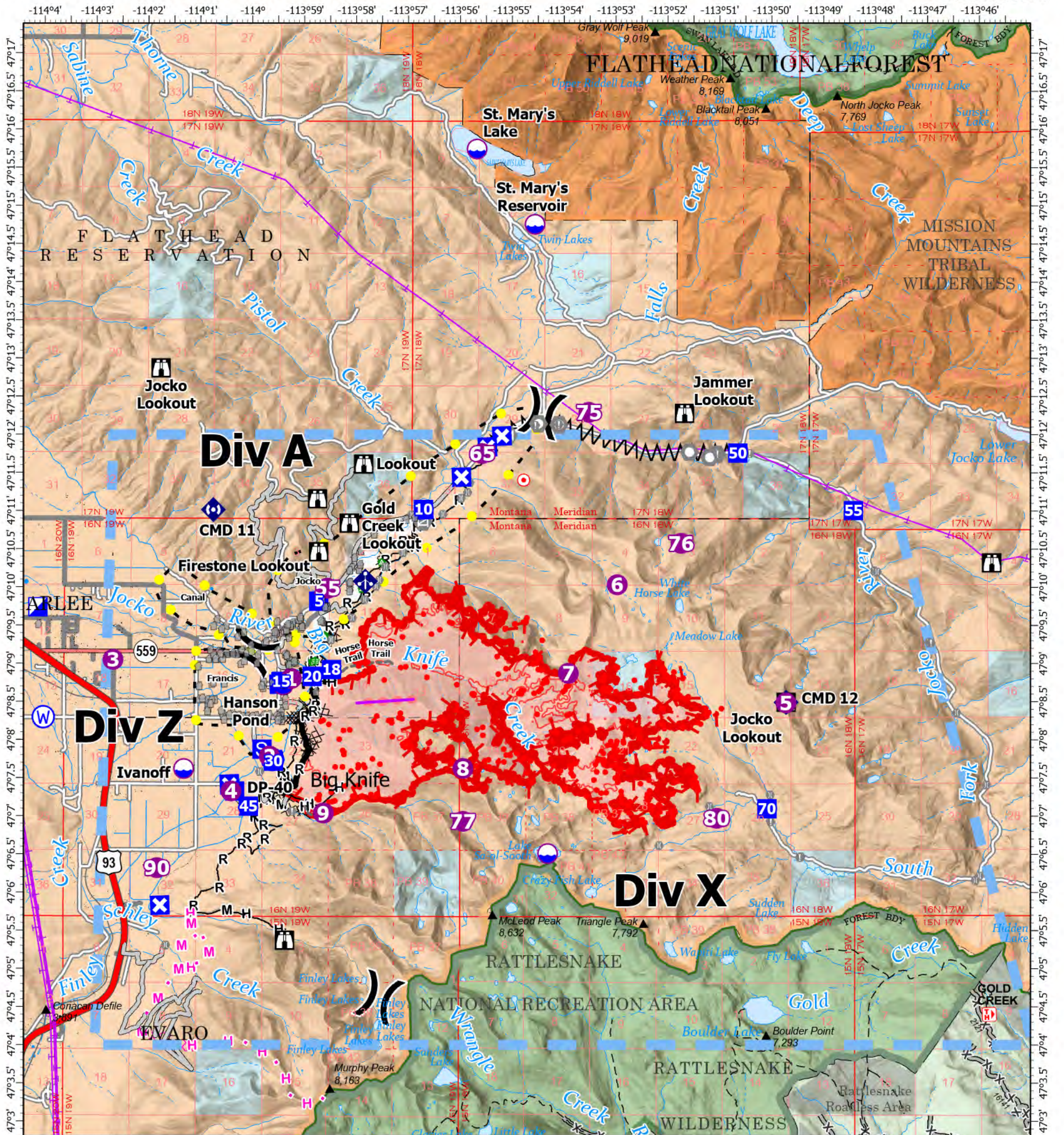


AIR OPERATIONS - BIG KNIFE

8/20/2023



Feature Category	Label	Comments	Latitude	Longitude
Dip Site		Clean bucket or tank prior to use	47° 06.513' N	113° 54.314' W
Dip Site	Hanson Pond	1 mile west of bottom of fire. 3500' elevation (Type 3 Helicopters/Type 2)	47° 08.719' N	113° 59.396' W
Dip Site	Ivanoff	2 miles south and west of fire 3500 elevation (Type 2 Helicopters)	47° 07.622' N	114° 01.305' W
Dip Site	St. Mary's Lake	7 miles north of fire. 4000' elevation (Type 1 Helicopters)	47° 15.747' N	113° 55.678' W
Dip Site	St. Mary's Reservoir		47° 14.760' N	113° 54.561' W
Helispot	1		47° 08.805' N	113° 59.242' W
Helispot	2	Div z near toe of slope	47° 07.787' N	113° 59.659' W
Helispot	3	By Jim Steeles	47° 09.050' N	114° 02.667' W
Helispot	4	Proposed Helispot, approved 8/8/2023	47° 07.329' N	114° 00.395' W
Helispot	5	Jocko Lookout. Approved 8/11/2023 by Helicopter 353E	47° 08.489' N	113° 49.736' W
Helispot	55	Type 3 Capable	47° 09.988' N	113° 58.547' W
Helispot	6	approved 8/12	47° 10.037' N	113° 52.978' W
Helispot	65	Type 3 Capable	47° 11.756' N	113° 55.575' W
Helispot	7	Approved 8/11/2023 by Helicopter 353E	47° 08.875' N	113° 53.917' W
Helispot	75	Jocko Prairie. Approved by Helicopter 535E	47° 12.297' N	113° 53.523' W
Helispot	76		47° 10.580' N	113° 51.750' W
Helispot	77	Approved by Helicopter 353E 8/11/2023	47° 06.935' N	113° 55.940' W
Helispot	8	Approved 8/11/2023 by Helicopter 353E	47° 07.628' N	113° 55.940' W
Helispot	80	Type 2 and Type 3 Capable.	47° 06.976' N	113° 51.066' W
Helispot	9		47° 07.042' N	113° 58.620' W
Repeater	CMD 11		47° 11.016' N	114° 00.743' W
Repeater	CMD 12		47° 08.496' N	113° 49.731' W

Big Knife MT-FHA-000094

Fire Perimeter as of
08/19/2023 1000 hrs
7,150 Acres

<ul style="list-style-type: none"> ■ Contained ■ Uncontained ■ Wildfire Daily Fire Perimeter ● IR Isolated Heat Source ● IR Heat Perimeter ● IR Intense Heat ● IR Scattered Heat 	<ul style="list-style-type: none"> ● Dip Site ● Helispot ✕ Division Break ● Incident Command Post ● Drop Point ■ Closure ■ Staging Area 	<ul style="list-style-type: none"> ● Lookout ● Hot Spot - Spot Fire ● Value at Risk ● Landmark ● Gate ● Bridge ● Structure Wrap 	<ul style="list-style-type: none"> ● Stream Crossing ● Landing or Log Deck ● Dozer Push ● Mobile Weather Unit ● Repeater ● Water Source ✕ Completed Dozer Line 	<ul style="list-style-type: none"> ▲ Completed Fuel Break ▲ Completed Hand Line ▲ Completed Mixed Construction Line ▲ Completed Road as Line ▲ Planned Dozer Line ▲ Planned Hand Line ▲ Planned Mixed Construction Line 	<ul style="list-style-type: none"> ■ Access or Improved Road ■ Highlighted Feature ■ Other ■ Escape Route ● Retardant Drop ■ Temporary Flight Restriction ■ USFS Roadless Areas 	<ul style="list-style-type: none"> ■ USFS Wilderness ■ Tribal Wilderness Area ■ Forest Service Land
---	--	--	---	--	--	--

