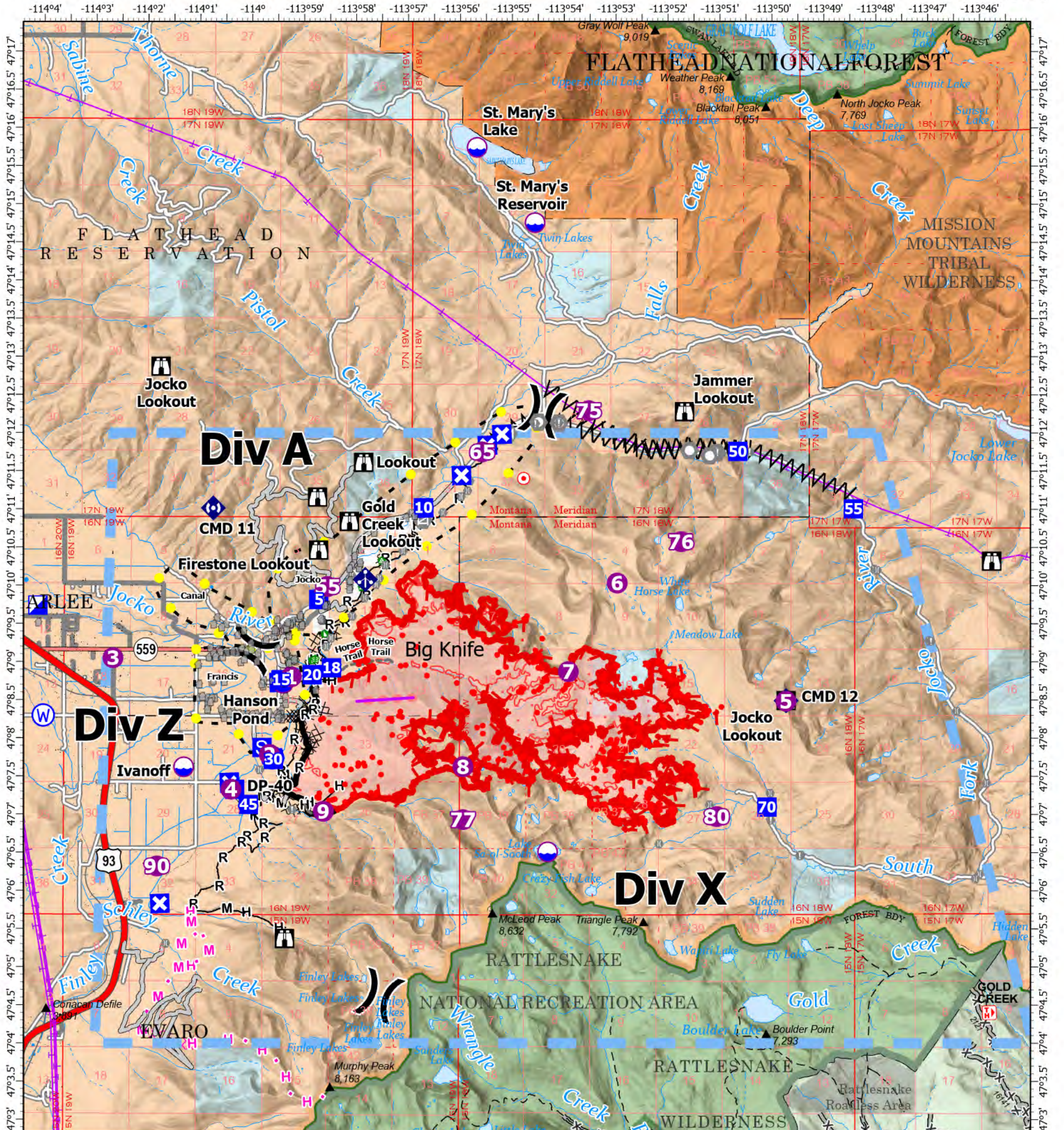


AIR OPERATIONS - BIG KNIFE

8/21/2023



| Feature Category | Label | Comments | Latitude | Longitude |
|------------------|----------------------|--|---------------|----------------|
| Dip Site | | Clean bucket or tank prior to use | 47° 06.513' N | 113° 54.314' W |
| Dip Site | Hanson Pond | 1 mile west of bottom of fire. 3500' elevation (Type 3 Helicopters/Type 2) | 47° 08.719' N | 113° 59.396' W |
| Dip Site | Ivanoff | 2 miles south and west of fire 3500 elevation (Type 2 Helicopters) | 47° 07.622' N | 114° 01.305' W |
| Dip Site | St. Mary's Lake | 7 miles north of fire. 4000' elevation (Type 1 Helicopters) | 47° 15.747' N | 113° 55.678' W |
| Dip Site | St. Mary's Reservoir | | 47° 14.760' N | 113° 54.561' W |
| Helispot | 1 | | 47° 08.805' N | 113° 59.242' W |
| Helispot | 2 | Div z near toe of slope | 47° 07.787' N | 113° 59.659' W |
| Helispot | 3 | By Jim Steeles | 47° 09.050' N | 114° 02.667' W |
| Helispot | 4 | Proposed Helispot, approved 8/8/2023 | 47° 07.329' N | 114° 00.395' W |
| Helispot | 5 | Jocko Lookout. Approved 8/11/2023 by Helicopter 353E | 47° 08.489' N | 113° 49.736' W |
| Helispot | 55 | Type 3 Capable | 47° 09.988' N | 113° 58.547' W |
| Helispot | 6 | approved 8/12 | 47° 10.037' N | 113° 52.978' W |
| Helispot | 65 | Type 3 Capable | 47° 11.756' N | 113° 55.575' W |
| Helispot | 7 | Approved 8/11/2023 by Helicopter 353E | 47° 08.875' N | 113° 53.917' W |
| Helispot | 75 | Jocko Prairie. Approved by Helicopter 535E | 47° 12.297' N | 113° 53.523' W |
| Helispot | 76 | | 47° 10.580' N | 113° 51.750' W |
| Helispot | 77 | Approved by Helicopter 353E 8/11/2023 | 47° 06.935' N | 113° 55.940' W |
| Helispot | 8 | Approved 8/11/2023 by Helicopter 353E | 47° 07.628' N | 113° 55.940' W |
| Helispot | 80 | Type 2 and Type 3 Capable. | 47° 06.976' N | 113° 51.066' W |
| Helispot | 9 | | 47° 07.042' N | 113° 58.620' W |
| Repeater | CMD 11 | | 47° 11.016' N | 114° 00.743' W |
| Repeater | CMD 12 | | 47° 08.496' N | 113° 49.731' W |

Big Knife MT-FHA-000094

Fire Perimeter as of
08/20/2023 0502 hrs
7,250 Acres

| | | | | | | |
|---|--|--|---|--|--|--|
| <ul style="list-style-type: none"> ■ Contained ■ Uncontained ■ Wildfire Daily Fire Perimeter ● IR Isolated Heat Source ● IR Heat Perimeter ● IR Intense Heat ● IR Scattered Heat | <ul style="list-style-type: none"> ● Dip Site ● Helispot ✕ Division Break ● Incident Command Post ● Drop Point ● Closure ● Staging Area | <ul style="list-style-type: none"> ● Lookout ● Hot Spot - Spot Fire ● Value at Risk ● Landmark ● Gate ● Bridge ● Structure Wrap | <ul style="list-style-type: none"> ● Stream Crossing ● Landing or Log Deck ● Dozer Push ● Mobile Weather Unit ● Repeater ● Water Source ● Completed Dozer Line | <ul style="list-style-type: none"> ▲ Completed Fuel Break ▲ Completed Hand Line ▲ Completed Mixed Construction Line ▲ Completed Road as Line ▲ Planned Dozer Line ▲ Planned Hand Line ▲ Planned Mixed Construction Line | <ul style="list-style-type: none"> — Access or Improved Road — Highlighted Feature — Other — Escape Route ● Retardant Drop — Temporary Flight Restriction — USFS Roadless Areas | <ul style="list-style-type: none"> — USFS Wilderness — Tribal Wilderness Area — Forest Service Land |
|---|--|--|---|--|--|--|

