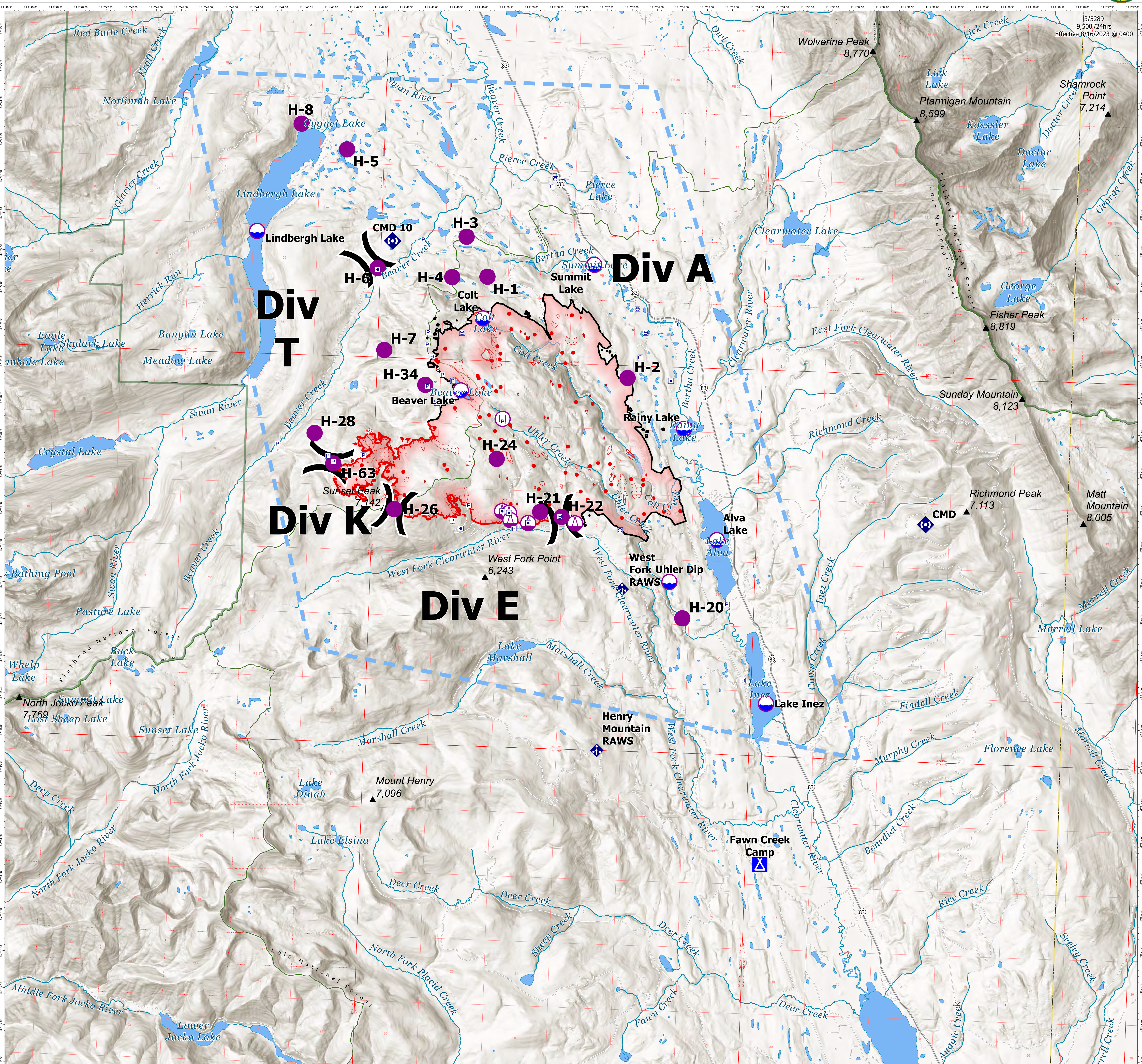


# Air Operations



FC Point Type	Label	Latitude WGS84 DDM	Longitude WGS84 DDM	Elevation (Feet)	Comments
Camp	Fawn Creek Camp	47° 14.526' N	113° 34.994' W	4100	Lake and campground closed
Dip Site	Alva Lake	47° 18.897' N	113° 40.162' W	5800	
Dip Site	Beaver Lake	47° 20.810' N	113° 39.773' W	4900	
Dip Site	Colt Lake	47° 21.795' N	113° 33.877' W	4100	
Dip Site	Lake Inez	47° 16.702' N	113° 44.336' W	4500	Scopers primary
Dip Site	Lindbergh Lake	47° 22.874' N	113° 31.559' W	4100	
Dip Site	Pacioli Lake	47° 07.144' N	113° 35.688' W	4100	
Dip Site	Rainy Lake	47° 20.391' N	113° 37.591' W	4200	
Dip Site	Summit Lake	47° 22.573' N	113° 35.895' W	4200	
Dip Site	Uhler Dip	47° 18.510' N	113° 35.895' W	4200	
Helibase	Condon Helibase	47° 32.549' N	113° 43.437' W	3600	Type 2/3 approved
Helispot	H-1	47° 22.362' N	113° 39.711' W	4600	Type 2/3 approved
Helispot	H-2	47° 21.054' N	113° 36.849' W	4300	Type 2/3 power takeoff
Helispot	H-20	47° 17.022' N	113° 35.599' W	4200	Type 2/3 approved
Helispot	H-21	47° 19.200' N	113° 38.500' W	4800	Type 2/3 approved and needs dust abatement
Helispot	H-22	47° 19.141' N	113° 38.071' W	4800	Approved 8/1
Helispot	H-24	47° 19.898' N	113° 39.403' W	5800	Approved type 3 helispot. Needs dust abatement. Skidgie there for dust.
Helispot	H-26	47° 19.168' N	113° 41.408' W	7100	Approved for Type 2/3
Helispot	H-28	47° 20.164' N	113° 43.049' W	7100	Helispot approved for type 3, needs dust abatement
Helispot	H-3	47° 22.894' N	113° 40.154' W	4400	Type 3 approved
Helispot	H-34	47° 20.868' N	113° 40.876' W	4800	Approved for Type 2
Helispot	H-4	47° 22.340' N	113° 40.417' W	4800	Type 2/3 approved and needs dust abatement
Helispot	H-5	47° 24.022' N	113° 42.599' W	4400	Type 2/3 approved. Emergency use only private. Life flight uses this spot would be good for rendezvous with agency aircraft or too bear air hoist to life flight transfer.
Helispot	H-6	47° 22.420' N	113° 41.906' W	4500	Type 2/3 approved and needs dust abatement
Helispot	H-63	47° 19.761' N	113° 42.654' W	5400	Approved for Type 2
Helispot	H-7	47° 21.322' N	113° 41.716' W	5400	
Helispot	H-8	47° 24.349' N	113° 43.522' W	4300	Proposed helispot - Lindbergh Lake CG
Mobile Weather Unit	Henry Mountain RAWs	47° 15.592' N	113° 27.216' W	5376	Lolo National Forest #2 RAWs (17730)
Mobile Weather Unit	West Fork RAWs	47° 18.191' N	113° 36.816' W	4821	Boise ID# : IRAWS 24, Mark Barbo (208) 789-4561
Repeater	CMD	47° 19.199' N	113° 30.815' W		
Repeater	CMD 10	47° 22.804' N	113° 41.626' W		
Repeater	CMD9	47° 11.400' N	113° 21.484' W		

**Colt Fire**  
 MT-SWS-200549  
**8/19/2023**  
**7,154 Acres**  
 Fire perimeter updated  
 from GPS on 8/17/2023 @ 2130hrs

- Dip Site
- Helispot
- Sling Site
- Unimproved Landing Area
- Division Break
- Incident Command Post
- Camp
- Hot Spot - Spot Fire
- Mobile Weather Unit
- Repeater
- Summit; Gap
- Temporary Flight Restriction
- Contained
- Uncontained
- Retardant Avoidance Area
- Perennial Stream
- State or Territory
- County or Equivalent
- Administrative FS Boundary
- Ranger District Boundary
- FS Wilderness Boundary
- Local Connector
- Wildfire Daily Fire Perimeter
- Runway
- Perennial NHDWaterbody
- Perennial NHDArea



NR IMT 5  
 8/18/2023 2216  
 North American 1983 Datum. LatLong Grid