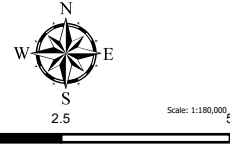
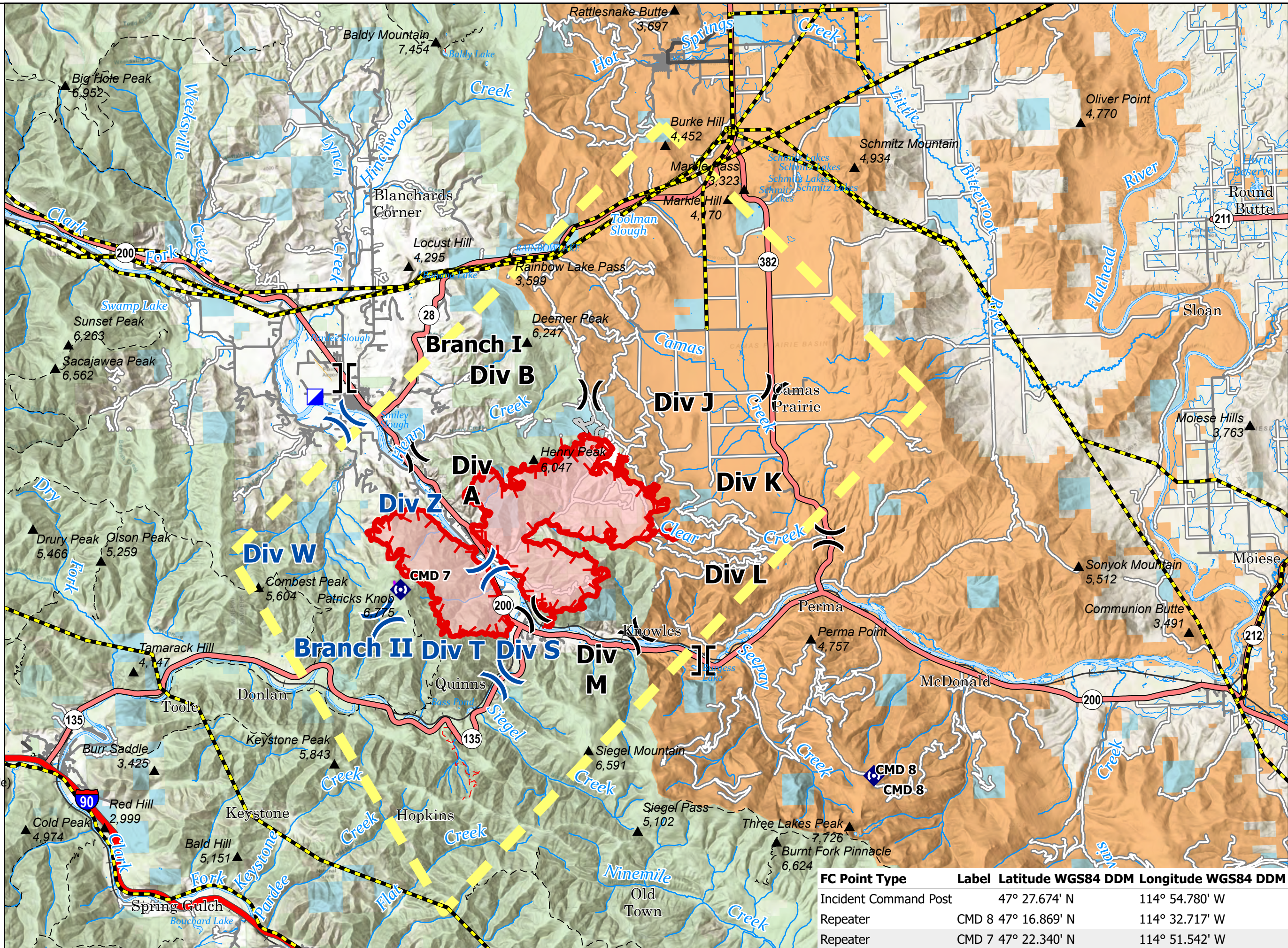


# AirOps

River Road East  
 MT-LNF-200730  
 16,790 acres  
 8/22/2023

Fire perimeter updated from  
 Acres from IR on 8/20/2023 @ 1738

- LNF Electric Trans. Lines
- Division Break
- Branch Break
- Incident Command Post
- Repeater
- Access or Improved Road
- Retardant Drop
- Temporary Flight Restriction
- Uncontained
- Wildfire Daily Fire Perimeter
- Primary Highway
- Secondary Highway
- Primary Paved
- Secondary Paved
- Secondary Dirt
- Trail
- National Designated Trail
- Railroad
- Runway
- Lake / Pond
- Lake / Pond (Intermittent)
- Reservoir
- Stream/River; Artificial Path
- Canal / Ditch
- Flathead Reservation
- Forest Service Land
- BLM Lands
- State Lands
- Event Point (for coordinate table)



8/22/2023 0644  
 North American 1983  
 Datum: Lat/Long Grid

FC Point Type	Label	Latitude WGS84 DDM	Longitude WGS84 DDM
Incident Command Post		47° 27.674' N	114° 54.780' W
Repeater	CMD 8	47° 16.869' N	114° 32.717' W
Repeater	CMD 7	47° 22.340' N	114° 51.542' W