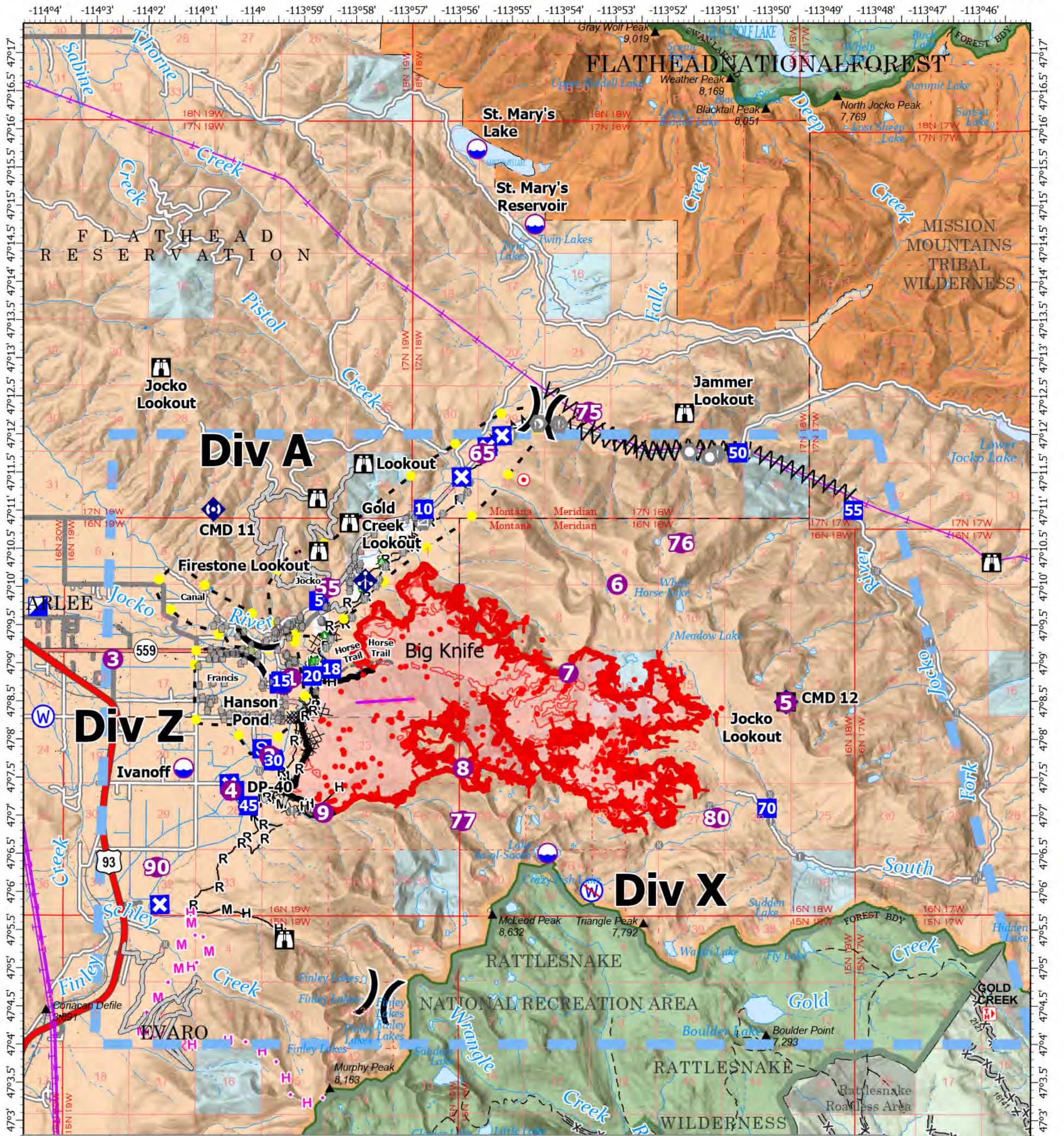


# AIR OPERATIONS - BIG KNIFE

8/22/2023



Feature Category	Label	Comments	Latitude	Longitude
Dip Site		Clean bucket or tank prior to use	47° 06.513' N	113° 54.314' W
Dip Site	Hanson Pond	1 mile west of bottom of fire. 3500' elevation (Type 3 Helicopters/Type 2)	47° 08.719' N	113° 59.396' W
Dip Site	Ivanoff	2 miles south and west of fire 3500 elevation (Type 2 Helicopters)	47° 07.622' N	114° 01.305' W
Dip Site	St. Mary's Lake	7 miles north of fire. 4000' elevation (Type 1 Helicopters)	47° 15.747' N	113° 55.678' W
Dip Site	St. Mary's Reservoir		47° 14.760' N	113° 54.561' W
Helispot	1		47° 08.805' N	113° 59.242' W
Helispot	2	Div z near toe of slope	47° 07.787' N	113° 59.659' W
Helispot	3	By Jim Steeles	47° 09.050' N	114° 02.667' W
Helispot	4	Proposed Helispot, approved 8/8/2023	47° 07.329' N	114° 00.395' W
Helispot	5	Jocko Lookout. Approved 8/11/2023 by Helicopter 353E	47° 08.489' N	113° 49.736' W
Helispot	55	Type 3 Capable	47° 09.988' N	113° 58.547' W
Helispot	6	approved 8/12	47° 10.037' N	113° 52.978' W
Helispot	65	Type 3 Capable	47° 11.756' N	113° 55.575' W
Helispot	7	Approved 8/11/2023 by Helicopter 353E	47° 08.875' N	113° 53.917' W
Helispot	75	Jocko Prairie. Approved by Helicopter 535E	47° 12.297' N	113° 53.523' W
Helispot	76		47° 10.580' N	113° 51.750' W
Helispot	77	Approved by Helicopter 353E 8/11/2023	47° 06.935' N	113° 55.940' W
Helispot	8	Approved 8/11/2023 by Helicopter 353E	47° 07.628' N	113° 55.940' W
Helispot	80	Type 2 and Type 3 Capable.	47° 06.976' N	113° 51.066' W
Helispot	9		47° 07.042' N	113° 58.620' W
Repeater	CMD 11		47° 11.016' N	114° 00.743' W
Repeater	CMD 12		47° 08.496' N	113° 49.731' W

## Big Knife MT-FHA-000094

Fire Perimeter as of  
08/20/2023 0502 hrs  
7,250 Acres

<ul style="list-style-type: none"> <li>■ Contained</li> <li>■ Uncontained</li> <li>■ Wildfire Daily Fire Perimeter</li> <li>● IR Isolated Heat Source</li> <li>● IR Heat Perimeter</li> <li>● IR Intense Heat</li> <li>● IR Scattered Heat</li> </ul>	<ul style="list-style-type: none"> <li>● Dip Site</li> <li>● Helispot</li> <li>● Division Break</li> <li>● Incident Command Post</li> <li>● Drop Point</li> <li>● Closure</li> <li>● Staging Area</li> <li>● Lookout</li> <li>● Hot Spot - Spot Fire</li> <li>● Value at Risk</li> <li>● Landmark</li> <li>● Gate</li> <li>● Bridge</li> <li>● Structure Wrap</li> <li>● Stream Crossing</li> <li>● Landing or Log Deck</li> <li>● Dozer Push</li> <li>● Mobile Weather Unit</li> <li>● Repeater</li> <li>● Water Source</li> <li>● Restricted Water Source</li> <li>● Completed Dozer Line</li> <li>● Completed Fuel Break</li> <li>● Completed Hand Line</li> <li>● Completed Mixed Construction Line</li> <li>● Completed Road as Line</li> <li>● Planned Dozer Line</li> <li>● Planned Hand Line</li> </ul>	<ul style="list-style-type: none"> <li>● Planned Mixed Construction Line</li> <li>■ Access or Improved Road</li> <li>● Highlighted Feature</li> <li>● Other</li> <li>● Escape Route</li> <li>● Retardant Drop</li> <li>■ Temporary Flight Restriction</li> <li>■ USFS Roadless Areas</li> <li>■ USFS Wilderness</li> <li>■ Tribal Wilderness Area</li> <li>■ Forest Service Land</li> </ul>
---	---	---

Miles 0 0.5