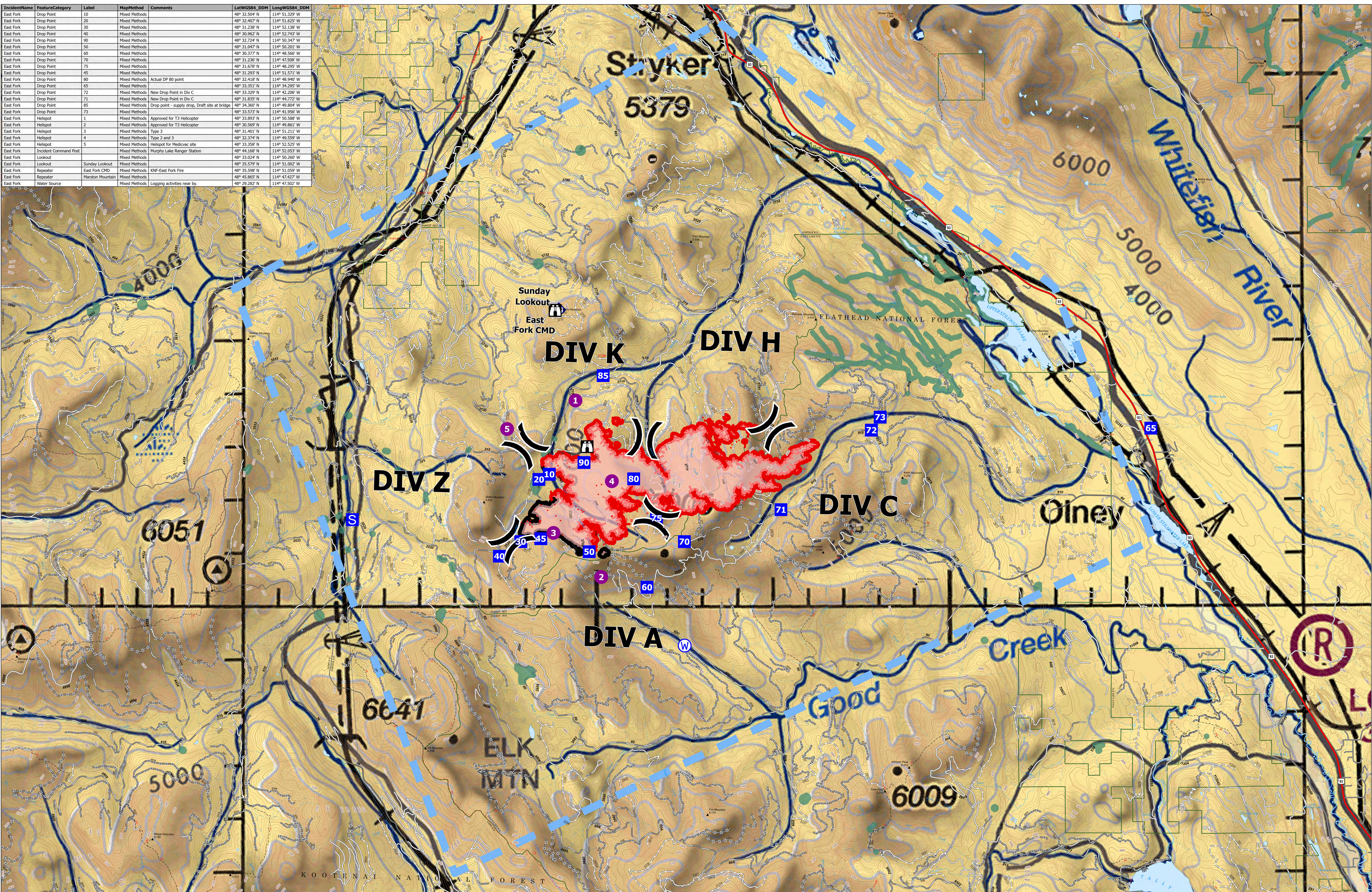
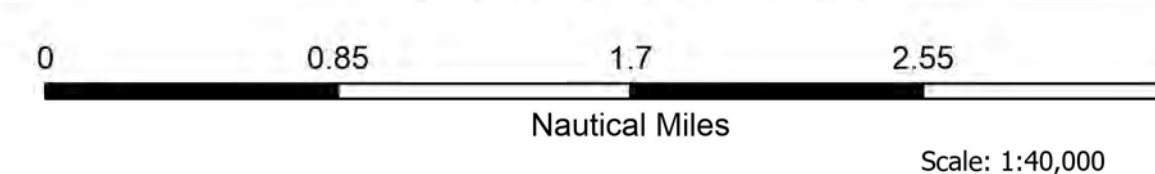
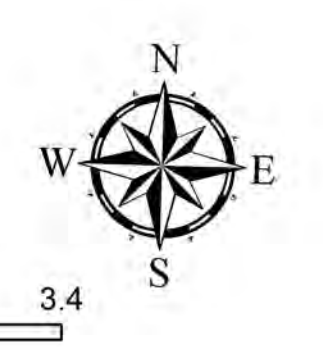


IncidentName	FeatureCategory	Label	MapMethod	Comments	LatWGS84_DDM	LongWGS84_DDM
East Fork	Drop Point	10	Mixed Methods		48° 32.509' N	114° 51.229' W
East Fork	Drop Point	20	Mixed Methods		48° 32.507' N	114° 51.628' W
East Fork	Drop Point	30	Mixed Methods		48° 31.238' N	114° 52.138' W
East Fork	Drop Point	40	Mixed Methods		48° 30.962' N	114° 52.743' W
East Fork	Drop Point	90	Mixed Methods		48° 32.724' N	114° 50.243' W
East Fork	Drop Point	50	Mixed Methods		48° 31.047' N	114° 50.201' W
East Fork	Drop Point	60	Mixed Methods		48° 30.377' N	114° 48.566' W
East Fork	Drop Point	70	Mixed Methods		48° 31.236' N	114° 47.598' W
East Fork	Drop Point	75	Mixed Methods		48° 31.678' N	114° 48.295' W
East Fork	Drop Point	45	Mixed Methods		48° 31.293' N	114° 51.571' W
East Fork	Drop Point	80	Mixed Methods	Actual DP 80 point	48° 32.418' N	114° 48.940' W
East Fork	Drop Point	65	Mixed Methods		48° 33.351' N	114° 34.295' W
East Fork	Drop Point	72	Mixed Methods	New Drop Point in Div C	48° 33.259' N	114° 42.266' W
East Fork	Drop Point	71	Mixed Methods	New Drop Point in Div C	48° 31.835' N	114° 44.772' W
East Fork	Drop Point	85	Mixed Methods	Drop point - supply drop, Draft site at bridge	48° 34.360' N	114° 49.804' W
East Fork	Drop Point	73	Mixed Methods		48° 33.573' N	114° 41.956' W
East Fork	Helispot	1	Mixed Methods	Approved for T3 Helicopter	48° 33.893' N	114° 50.588' W
East Fork	Helispot	2	Mixed Methods	Approved for T3 Helicopter	48° 30.569' N	114° 49.861' W
East Fork	Helispot	3	Mixed Methods	Type 3	48° 31.401' N	114° 51.211' W
East Fork	Helispot	4	Mixed Methods	Type 2 and 3	48° 32.374' N	114° 49.559' W
East Fork	Helispot	5	Mixed Methods	Helispot for Medevac site	48° 33.358' N	114° 52.525' W
East Fork	Incident Command Post		Mixed Methods	Murphy Lake Ranger Station	48° 44.168' N	114° 52.053' W
East Fork	Lookout		Mixed Methods		48° 33.024' N	114° 50.260' W
East Fork	Lookout	Sunday Lookout	Mixed Methods		48° 35.579' N	114° 51.002' W
East Fork	Repeater	East Fork CMD	Mixed Methods	KNF-East Fork Fire	48° 32.598' N	114° 51.059' W
East Fork	Repeater	Marston Mountain	Mixed Methods		48° 45.865' N	114° 47.427' W
East Fork	Water Source		Mixed Methods	Logging activities near by	48° 29.282' N	114° 47.502' W



**AirOps**  
 East Fork  
 MT-KNF-000262  
 4,614 acres  
 08/22/2023  
 Fire perimeter updated from  
 IR on 8/18/2023 2316hrs



- ▬ Temporary Flight Restriction
- Contained
- Uncontained
- Contained
- Uncontained
- Helispot
- ⊗ Division Break
- Drop Point
- ⊞ Staging Area
- Lookout
- Hot Spot - Spot Fire
- ◆ Repeater
- ⊞ Water Source
- Wildfire Perimeter
- Primary Highway
- Primary Paved
- Secondary Paved
- Secondary Dirt
- Paved
- Gravel Road
- Dirt Road
- Unimproved Road
- Forest Service Roads Closed
- Aerial Fire Retardant Avoidance Areas

8/21/2023 2124  
 North American 1983 Datum.  
 Lat/Long Grid