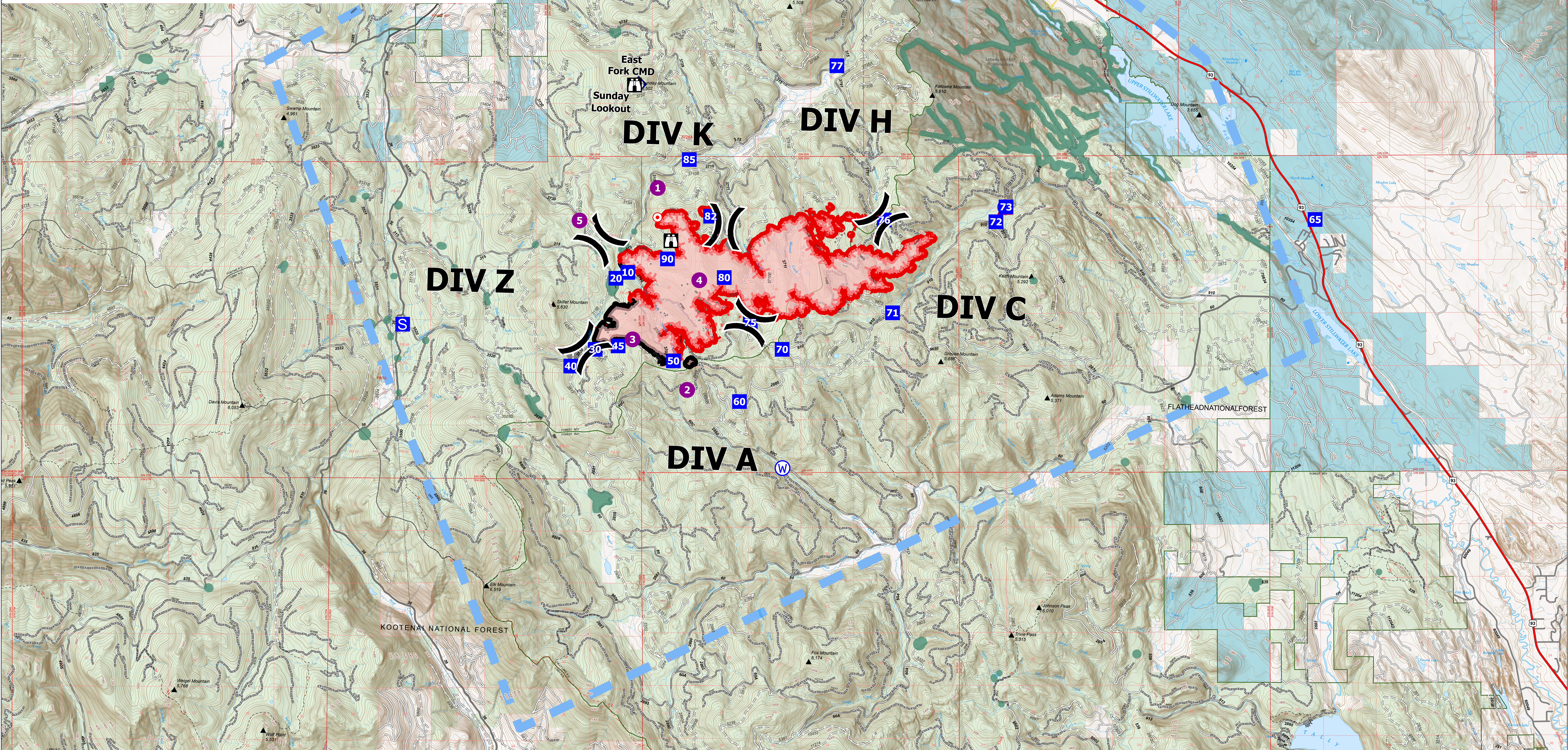
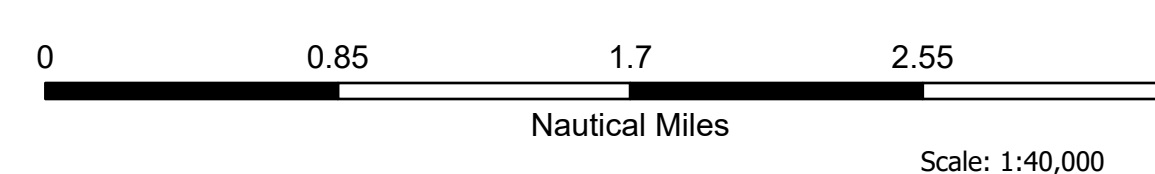
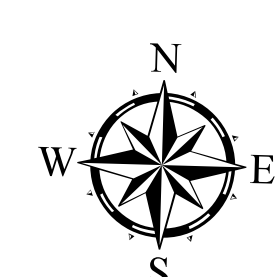


IncidentName	FeatureCategory	Label	MapMethod	Comments	LatWGS84_DDM
East Fork	Drop Point	10	Mixed Methods		48° 32.504' N
East Fork	Drop Point	20	Mixed Methods		48° 32.407' N
East Fork	Drop Point	30	Mixed Methods		48° 31.238' N
East Fork	Drop Point	40	Mixed Methods		48° 30.962' N
East Fork	Drop Point	90	Mixed Methods		48° 32.724' N
East Fork	Drop Point	50	Mixed Methods		48° 31.047' N
East Fork	Drop Point	60	Mixed Methods		48° 30.377' N
East Fork	Drop Point	70	Mixed Methods		48° 31.236' N
East Fork	Drop Point	75	Mixed Methods		48° 31.678' N
East Fork	Drop Point	45	Mixed Methods		48° 31.293' N
East Fork	Drop Point	80	Mixed Methods	Actual DP 80 point	48° 32.418' N
East Fork	Drop Point	65	Mixed Methods		48° 33.351' N
East Fork	Drop Point	72	Mixed Methods	New Drop Point in Div C	48° 33.339' N
East Fork	Drop Point	71	Mixed Methods	New Drop Point in Div C	48° 31.835' N
East Fork	Drop Point	85	Mixed Methods	Drop point - supply drop, Draft site at bridge	48° 34.360' N
East Fork	Drop Point	73	Mixed Methods		48° 33.573' N
East Fork	Drop Point	76	Mixed Methods		48° 33.362' N
East Fork	Drop Point	77	Mixed Methods		48° 35.901' N
East Fork	Drop Point	82	Mixed Methods	Jun 3 2019/3707rd drop point for supplies/ spot fire support vehicle parking along shoulder of road	48° 33.427' N
East Fork	Helispot	1	Mixed Methods	Approved for T3 Helicopter	48° 33.893' N
East Fork	Helispot	2	Mixed Methods	Approved for T3 Helicopter	48° 30.569' N
East Fork	Helispot	3	Mixed Methods	Type 3	48° 31.401' N
East Fork	Helispot	4	Mixed Methods	Type 2 and 3	48° 32.374' N
East Fork	Helispot	5	Mixed Methods	Helispot for Medevac site	48° 33.358' N
East Fork	Incident Command Post		Mixed Methods	Murphy Lake Ranger Station	48° 44.168' N
East Fork	Lookout		Mixed Methods		48° 33.024' N
East Fork	Lookout	Sunday Lookout	Mixed Methods		48° 35.579' N
East Fork	Repeater	East Fork CMD	Mixed Methods	KNF-East Fork Fire	48° 35.986' N
East Fork	Repeater	Marston Mountain	Mixed Methods		48° 45.865' N
East Fork	Value at Risk		Mixed Methods	soil sediment study site, culvert trap and equipment in place, try to maintain	48° 32.978' N
East Fork	Value at Risk		Mixed Methods	white pine plus trees - do not cut. If fire moves this direction, implement mitigation measures to prevent damage to tree	48° 31.158' N
East Fork	Water Source		Mixed Methods	Logging activities near by	48° 29.282' N
East Fork	Water Source		Mixed Methods		48° 33.569' N



AirOps
 East Fork
 MT-KNF-000262
 4,614 acres
 08/23/2023
 Fire perimeter updated from
 IR on 8/18/2023 2316hrs



- Temporary Flight Restriction
- Contained
- Uncontained
- Contained
- Uncontained
- Helispot
- ⊗ Division Break
- Drop Point

- Staging Area
- Lookout
- Hot Spot - Spot Fire
- Value at Risk
- ◆ Repeater
- ▲ Hazard
- ⊙ Water Source
- Wildfire Perimeter

- Primary Highway
- Primary Paved
- Secondary Paved
- Secondary Dirt
- Paved
- Gravel Road
- Dirt Road
- Unimproved Road

- Forest Service Roads Closed
- USFS Roadless Areas
- Forest Service Land
- Bureau of Land Management Lands
- State Lands
- Aerial Fire Retardant Avoidance Areas



kmally
 8/22/2023 2024
 North American 1983 Datum.
 Lat/Long Grid

AirOps