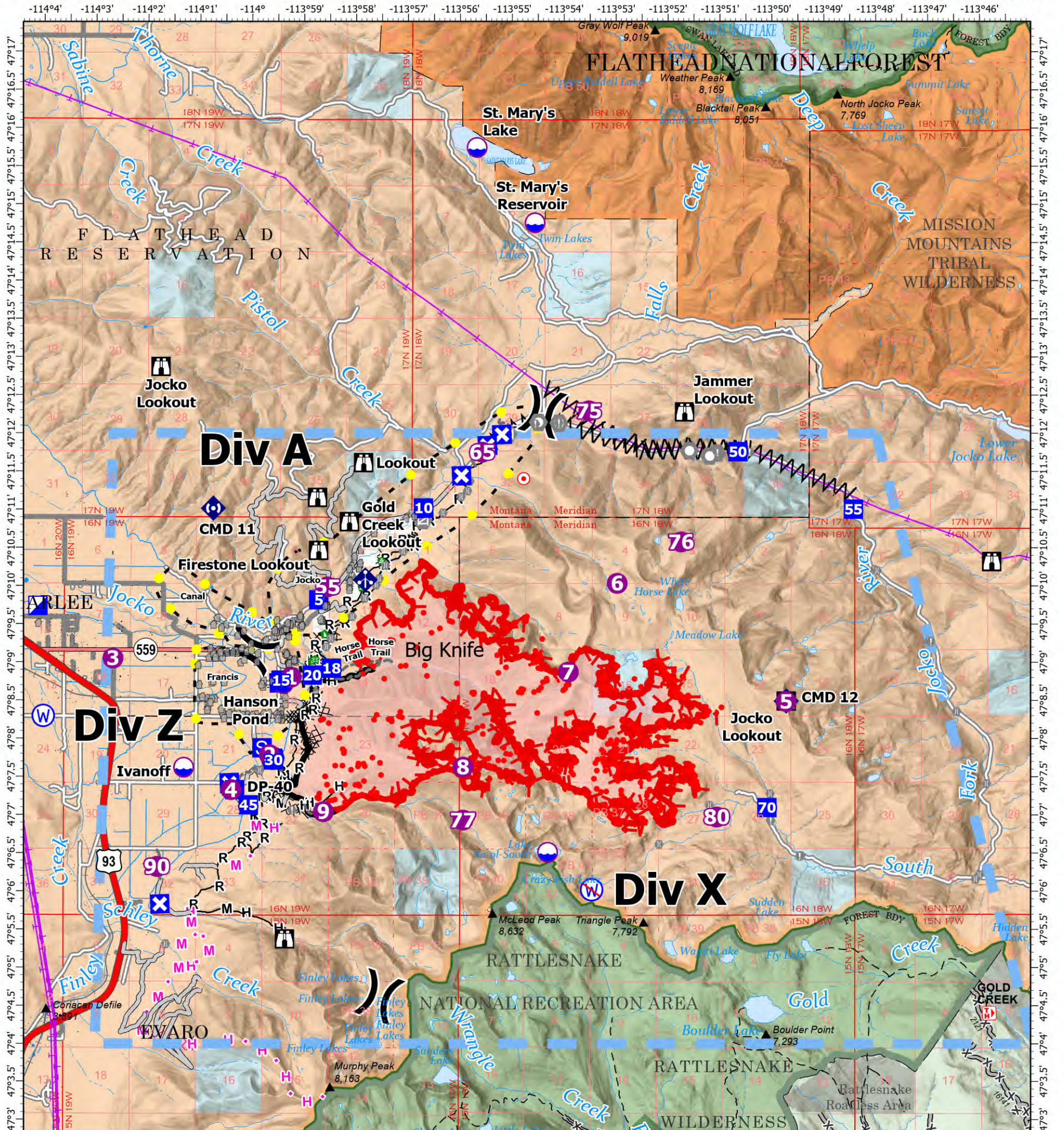


AIR OPERATIONS - BIG KNIFE

8/24/2023



| FeatureCategory | Label | Comments | Latitude | Longitude |
|-----------------|----------------------|--|---------------|----------------|
| Dip Site | | Clean bucket or tank prior to use | 47° 06.513' N | 113° 54.314' W |
| Dip Site | Hanson Pond | 1 mile west of bottom of fire. 3500' elevation (Type 3 Helicopters/Type 2) | 47° 08.719' N | 113° 59.396' W |
| Dip Site | Ivanoff | 2 miles south and west of fire 3500 elevation (Type 2 Helicopters) | 47° 07.622' N | 114° 01.305' W |
| Dip Site | St. Mary's Lake | 7 miles north of fire. 4000' elevation (Type 1 Helicopters) | 47° 15.747' N | 113° 55.678' W |
| Dip Site | St. Mary's Reservoir | | 47° 14.760' N | 113° 54.561' W |
| Helispot | 1 | | 47° 08.805' N | 113° 59.242' W |
| Helispot | 2 | Div z near toe of slope | 47° 07.787' N | 113° 59.659' W |
| Helispot | 3 | By Jim Steeles | 47° 09.050' N | 114° 02.667' W |
| Helispot | 4 | Proposed Helispot, approved 8/8/2023 | 47° 07.329' N | 114° 00.395' W |
| Helispot | 5 | Jocko Lookout. Approved 8/11/2023 by Helicopter 353E | 47° 08.489' N | 113° 49.736' W |
| Helispot | 55 | Type 3 Capable | 47° 09.988' N | 113° 58.547' W |
| Helispot | 6 | approved 8/12 | 47° 10.037' N | 113° 52.978' W |
| Helispot | 65 | Type 3 Capable | 47° 11.756' N | 113° 55.575' W |
| Helispot | 7 | Approved 8/11/2023 by Helicopter 353E | 47° 08.875' N | 113° 53.917' W |
| Helispot | 75 | Jocko Prairie. Approved by Helicopter 535E | 47° 12.297' N | 113° 53.523' W |
| Helispot | 76 | | 47° 10.580' N | 113° 51.750' W |
| Helispot | 77 | Approved by Helicopter 353E 8/11/2023 | 47° 06.935' N | 113° 55.940' W |
| Helispot | 8 | Approved 8/11/2023 by Helicopter 353E | 47° 07.628' N | 113° 55.940' W |
| Helispot | 80 | Type 2 and Type 3 Capable. | 47° 06.976' N | 113° 51.066' W |
| Helispot | 9 | | 47° 07.042' N | 113° 58.620' W |
| Repeater | CMD 11 | | 47° 11.016' N | 114° 00.743' W |
| Repeater | CMD 12 | | 47° 08.496' N | 113° 49.731' W |

Big Knife MT-FHA-000094

Fire Perimeter as of
08/22/2023 0646 hrs
7,275 Acres

| | | | | | |
|---------------------------------|-------------------------|-----------------------|---------------------------|--------------------------------------|--------------------------------|
| ■ Contained | ■ Incident Command Post | ○ Landmark | ◆ Mobile Weather Unit | M- Completed Mixed Construction Line | — Other |
| ■ Uncontained | ■ Drop Point | ○ Gate | ◆ Repeater | R- Completed Road as Line | — Escape Route |
| ■ Wildfire Daily Fire Perimeter | ■ Closure | ○ Bridge | ○ Water Source | — Planned Dozer Line | ■ Temporary Flight Restriction |
| ● IR Isolated Heat Source | ■ Staging Area | ○ Structure Wrap | ○ Restricted Water Source | H Planned Hand Line | ■ USFS Roadless Areas |
| ○ Dip Site | ○ Lookout | ○ Stream Crossing | ⊗ Completed Dozer Line | M Planned Mixed Construction Line | ■ USFS Wilderness |
| ○ Helispot | ○ Hot Spot - Spot Fire | ○ Landing or Log Deck | ▲ Completed Fuel Break | — Access or Improved Road | ■ Tribal Wilderness Area |
| ○ Division Break | ○ Value at Risk | ○ Dozer Push | H- Completed Hand Line | ● Highlighted Feature | ■ Forest Service Land |

Miles 0 0.5 1