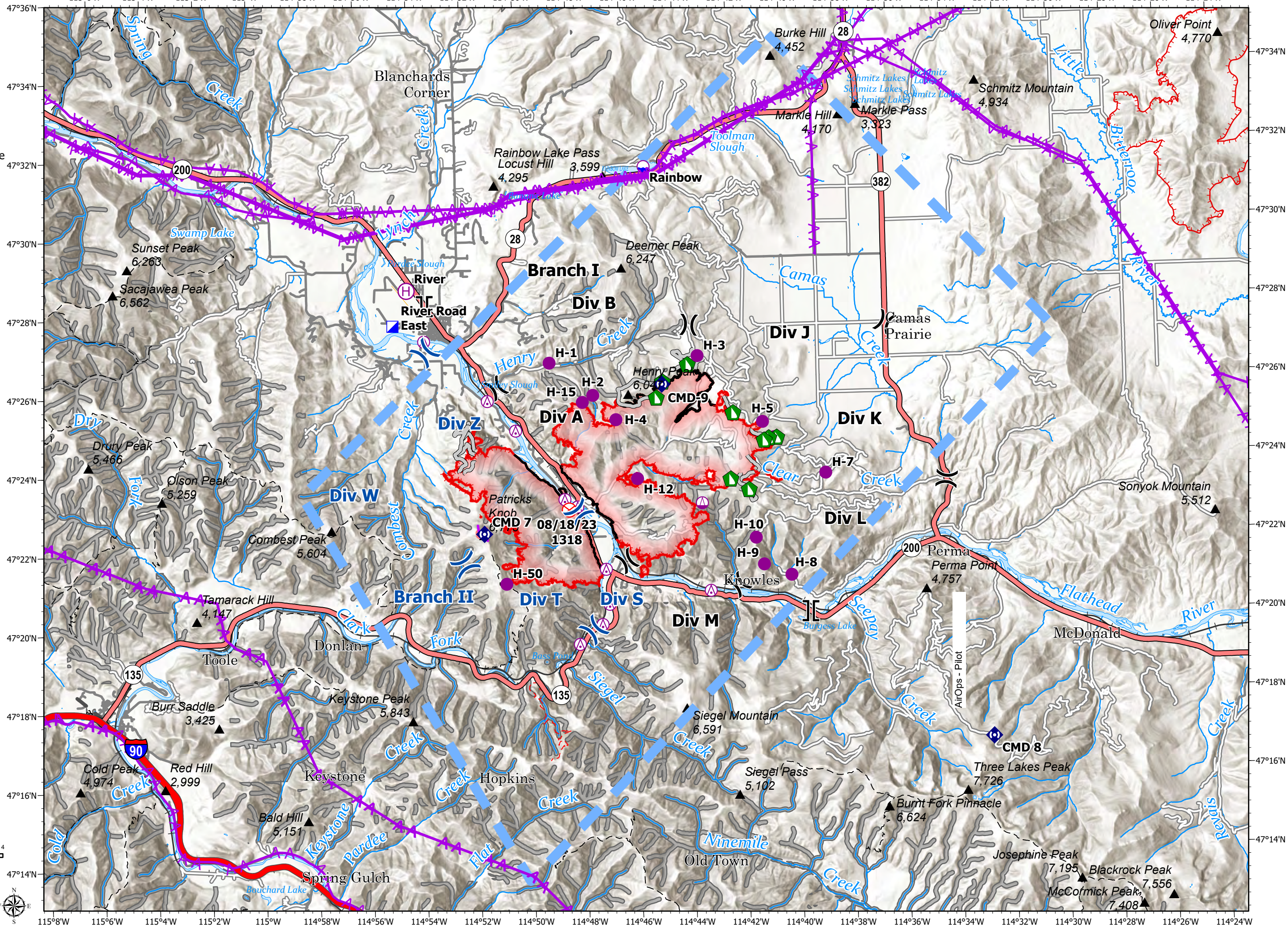


# AirOps - Pilot

River Road East  
MT-LNF-200730  
17,227 acres  
8/29/2023

Fire perimeter updated from  
Acres from IR on 8/29/2023 @ 0314

- ▲ Summit; Gap
- GNIS Populated Places Some
- Primary Highway
- Secondary Highway
- Primary Paved
- Secondary Paved
- Secondary Dirt
- Trail
- National Designated Trail
- Railroad
- Runway
- Retardant Avoidance
- Aerial Hazard
- Aerial Hazard
- Dip Site
- Helispot
- Helibase
- Sling Site
- Division Break
- Branch Break
- Incident Command Post
- Fire Origin
- Dozer Push
- Repeater
- Access or Improved Road
- Retardant Drop
- Temporary Flight Restriction
- Contained
- Uncontained
- IR Heat Perimeter
- IR Intense Heat
- IR Scattered Heat
- Wildfire Daily Fire Perimeter





FC Point Type	Label	Comments	Elevation (Feet)	Latitude WGS84 DDM	Longitude WGS84 DDM
Helispot	H-7	approved type 3	4300	47° 23.670' N	114° 38.723' W
Repeater	CMD 8			47° 16.869' N	114° 32.717' W
Helibase	River		2460	47° 28.565' N	114° 54.233' W
Helispot	H-10	approved type 3	4800	47° 22.072' N	114° 41.391' W
Repeater	CMD 7			47° 22.340' N	114° 51.542' W
Incident Command Post	River Road East			47° 27.674' N	114° 54.780' W
Helispot	H-9	approved for type 3	4300	47° 21.388' N	114° 41.116' W
Helispot	H-6	approved for type 3	4600	47° 24.610' N	114° 40.612' W
Helispot	H-50	approved for type 3	6400	47° 21.057' N	114° 50.764' W
Helispot	H-1		3100	47° 26.641' N	114° 48.954' W
Helispot	H-5	approved for type 3	3900	47° 25.008' N	114° 41.032' W
Helispot	H-8	Approved for type 3 helicopter		47° 21.104' N	114° 40.101' W
Helispot	H-4	Helispot needs dust abatement before landing		47° 25.158' N	114° 46.513' W
Helispot	H-12	approved for type 3, dust abatement desired	4000	47° 23.647' N	114° 45.766' W
Helispot	H-3	approved type 3	5000	47° 26.726' N	114° 43.407' W
Helispot	H-2	approved for type 3	4950	47° 25.792' N	114° 47.354' W
Sling Site				47° 22.985' N	114° 43.370' W
Dip Site	Rainbow			47° 31.564' N	114° 45.223' W
Repeater	CMD-9			47° 26.027' N	114° 44.761' W
Helispot	H-15	Approved for type 3 helicopter			

