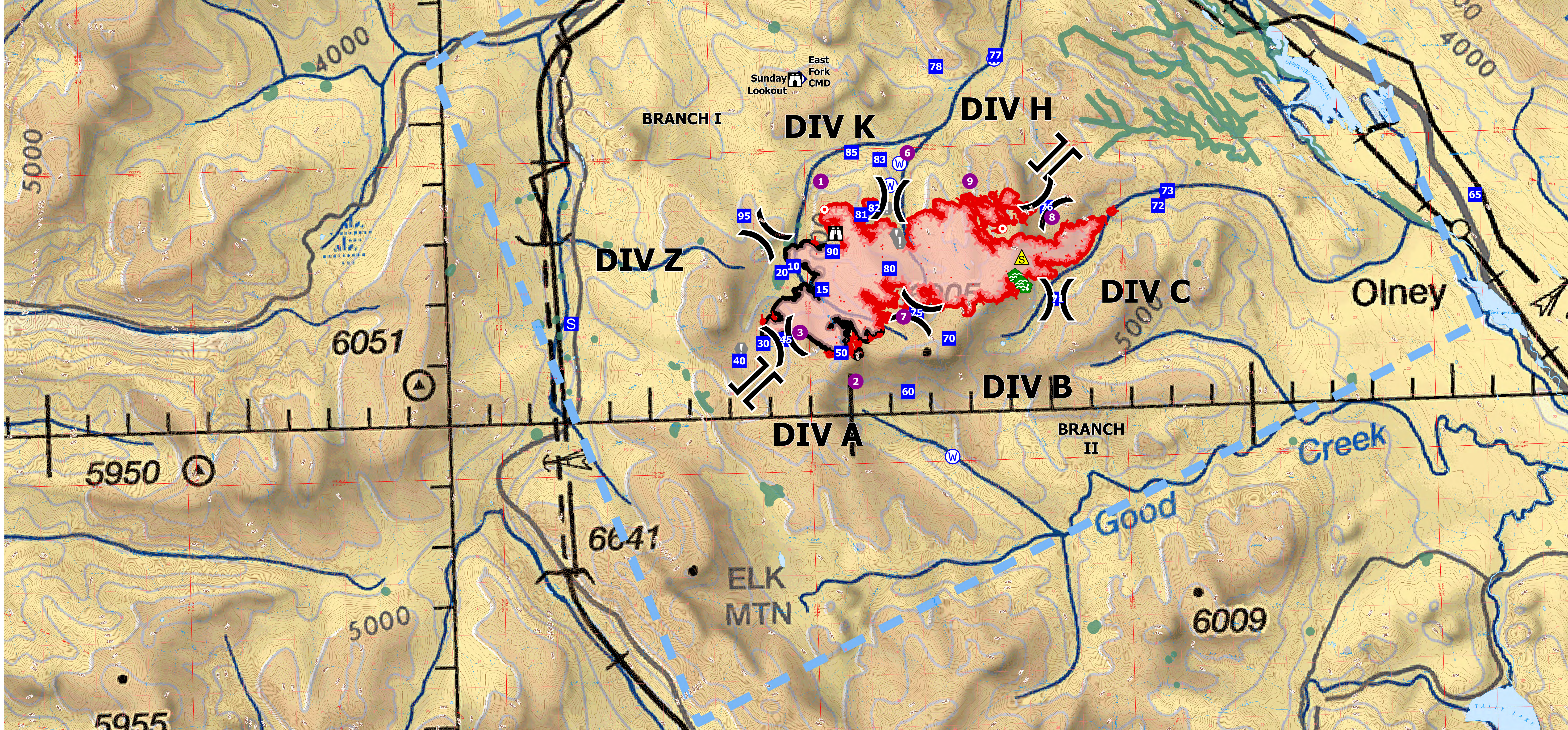
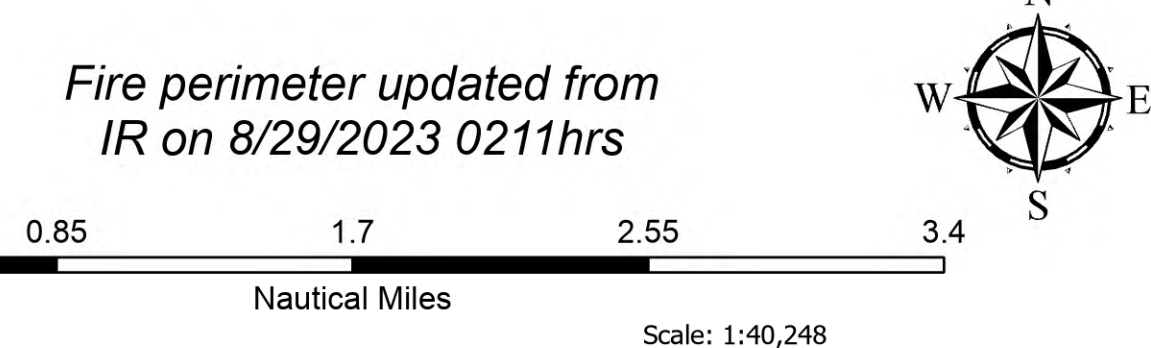


IncidentName	FeatureCategory	Label	Comments	LatWGS84_DDM	LongWGS84_DDM
East Fork	Drop Point	10		48° 32.504' N	114° 51.329' W
East Fork	Drop Point	15		48° 32.105' N	114° 50.633' W
East Fork	Drop Point	20		48° 31.407' N	114° 51.623' W
East Fork	Drop Point	30		48° 31.238' N	114° 52.138' W
East Fork	Drop Point	40		48° 30.962' N	114° 52.743' W
East Fork	Drop Point	45		48° 31.293' N	114° 51.571' W
East Fork	Drop Point	50		48° 31.047' N	114° 50.201' W
East Fork	Drop Point	60		48° 30.377' N	114° 48.566' W
East Fork	Drop Point	65		48° 31.407' N	114° 51.623' W
East Fork	Drop Point	70		48° 31.238' N	114° 52.138' W
East Fork	Drop Point	71	New Drop Point in Div C	48° 31.830' N	114° 44.772' W
East Fork	Drop Point	72	New Drop Point in Div C	48° 33.329' N	114° 42.206' W
East Fork	Drop Point	73		48° 33.573' N	114° 41.956' W
East Fork	Drop Point	75		48° 31.676' N	114° 48.295' W
East Fork	Drop Point	76		48° 31.362' N	114° 48.974' W
East Fork	Drop Point	77		48° 35.801' N	114° 46.143' W
East Fork	Drop Point	78		48° 35.739' N	114° 47.642' W
East Fork	Drop Point	80	Actual DP 80 point	48° 32.418' N	114° 48.940' W
East Fork	Drop Point	81	Drop point at dozer push - parking and UAS ops	48° 33.323' N	114° 49.605' W
East Fork	Drop Point	82	Junt. 3669rd/3707rd drop point for supplies/ spot fire support vehicle parking along shoulder of road	48° 33.427' N	114° 49.276' W
East Fork	Drop Point	83		48° 31.227' N	114° 49.100' W
East Fork	Drop Point	85	Drop point - supply drop, Draft site at bridge	48° 34.360' N	114° 49.804' W
East Fork	Drop Point	90		48° 32.724' N	114° 50.347' W
East Fork	Drop Point	95	Updated to Drop Point 8/24. Helispot for Medicvac site	48° 33.358' N	114° 52.525' W
East Fork	Helispot	1	Approved for T3 Helicopter	48° 33.893' N	114° 50.588' W
East Fork	Helispot	2	Approved for T3 Helicopter	48° 30.569' N	114° 49.861' W
East Fork	Helispot	3	Type 3	48° 31.401' N	114° 51.211' W
East Fork	Helispot	6		48° 34.323' N	114° 48.412' W
East Fork	Helispot	7		48° 31.613' N	114° 48.623' W
East Fork	Helispot	8	4x4 ground access. Recommend dust abatement before use.	48° 33.191' N	114° 44.855' W
East Fork	Helispot	9	Not Approved for now. Moon dust, brown out conditions. Would need a lot of water to keep dust down.	48° 33.826' N	114° 46.872' W
East Fork	Lookout			48° 33.024' N	114° 50.260' W
East Fork	Lookout			48° 35.579' N	114° 51.002' W
East Fork	Repeater	East Fork CMD	KNF-East Fork Fire	48° 35.598' N	114° 51.059' W
East Fork	Repeater	Marston Mountain		48° 45.865' N	114° 47.427' W
East Fork	Water Development or Draft Site		Ports-tank	48° 32.248' N	114° 45.821' W
East Fork	Water Development or Draft Site		Ports-tank	48° 32.134' N	114° 45.676' W



**AirOps**  
 East Fork  
 MT-KNF-000262  
 5162 acres



- Label Point
- Helispot
- ⌘ Division Break
- ⌘ Branch Break
- Drop Point
- Staging Area

- ⌘ Lookout
- Hot Spot - Spot Fire
- Value at Risk
- 🌿 Water Development or Draft Site
- 🌿 Retardant in Avoidance Area
- ◆ Repeater

- ⚠ Safety Zone
- ⚠ Hazard
- 🌊 Water Source
- 🚰 Retardant Drop
- 🚫 Temporary Flight Restriction
- IR Isolated Heat Source

- 🔴 Wildfire Perimeter
- ▬ Contained
- 🔴 Uncontained
- 🌿 Aerial Fire Retardant Avoidance Areas

kmally  
 8/29/2023 1747  
 North American 1983 Datum.  
 Lat/Long Grid