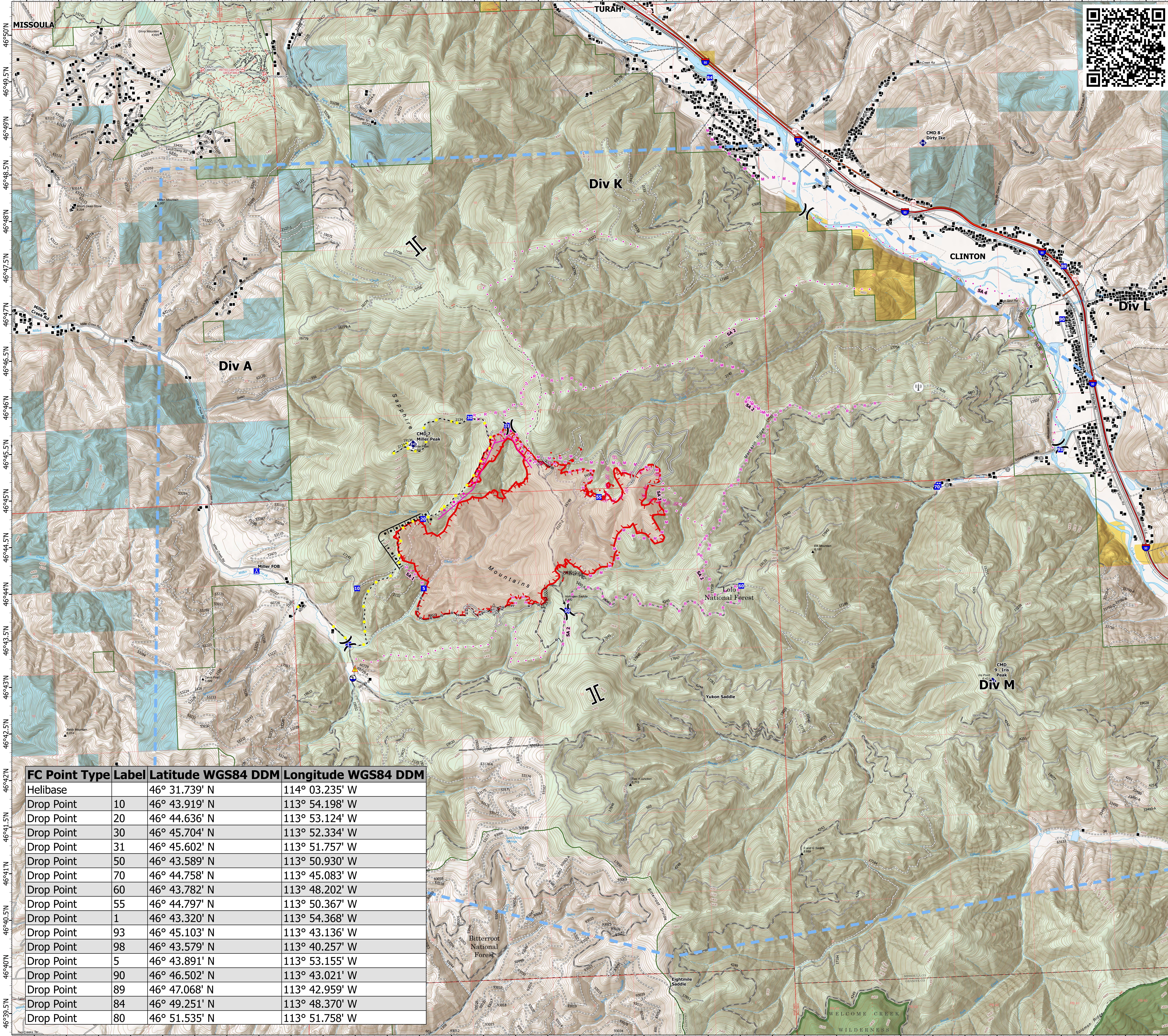


# Air Operations

Miller Peak  
 MT-LNF-240427  
 7/20/2024  
 2385 acres at 7/19/2024



- Structure
- ⌘ Division Break
- ⌘ Branch Break
- Drop Point
- Closure
- Camp
- Bridge
- ◆ Repeater
- ▲ Hazard
- Draft Site
- ▬ Completed Burnout
- ▬ Completed Dozer Line
- ▬ Completed Hand Line
- ▬ Completed Road as Line
- ▬ Planned Burnout
- ▬ Planned Dozer Line
- ▬ Planned Hand Line
- ▬ Planned Mixed Construction Line
- ▬ Planned Road as Line
- ▬ Proposed Line
- ▬ Access Route
- ▬ Highlighted Feature
- ▬ Other
- ▬ Temporary Flight Restriction
- ▬ Uncontained
- ▬ Other
- ▬ Wildfire Daily Fire Perimeter
- ▬ Primary Highway
- ▬ Secondary Highway
- ▬ Road
- ▬ Road, Paved
- ▬ Road, Dirt/Gravel
- ▬ Road, high clearance
- ▬ FS Closed Road
- ▬ FS Wilderness Boundary
- ▬ Forest Service Land
- ▬ Bureau of Land Management Lands
- ▬ State Lands
- Ⓜ Communication Site



FC Point Type	Label	Latitude WGS84 DDM	Longitude WGS84 DDM
Helibase		46° 31.739' N	114° 03.235' W
Drop Point	10	46° 43.919' N	113° 54.198' W
Drop Point	20	46° 44.636' N	113° 53.124' W
Drop Point	30	46° 45.704' N	113° 52.334' W
Drop Point	31	46° 45.602' N	113° 51.757' W
Drop Point	50	46° 43.589' N	113° 50.930' W
Drop Point	70	46° 44.758' N	113° 45.083' W
Drop Point	60	46° 43.782' N	113° 48.202' W
Drop Point	55	46° 44.797' N	113° 50.367' W
Drop Point	1	46° 43.320' N	113° 54.368' W
Drop Point	93	46° 45.103' N	113° 43.136' W
Drop Point	98	46° 43.579' N	113° 40.257' W
Drop Point	5	46° 43.891' N	113° 53.155' W
Drop Point	90	46° 46.502' N	113° 43.021' W
Drop Point	89	46° 47.068' N	113° 42.959' W
Drop Point	84	46° 49.251' N	113° 48.370' W
Drop Point	80	46° 51.535' N	113° 51.758' W

