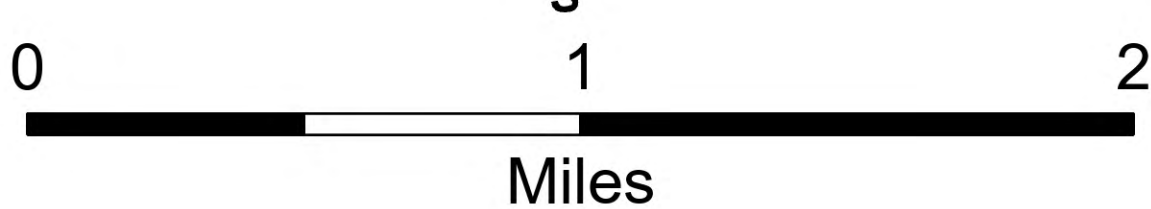
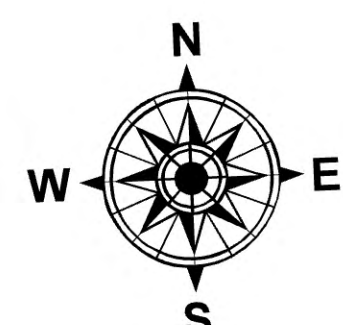
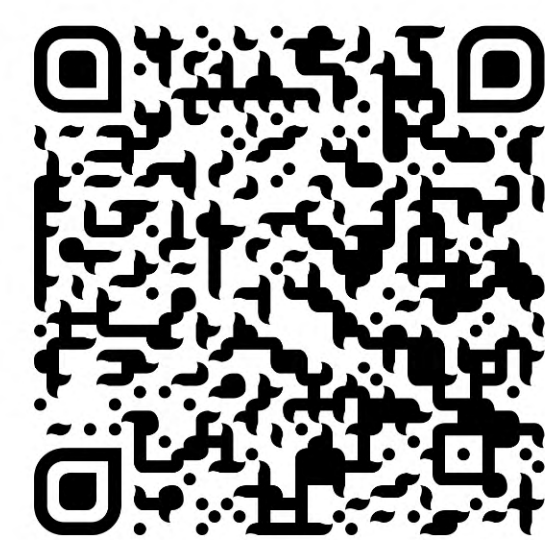


Air Operations

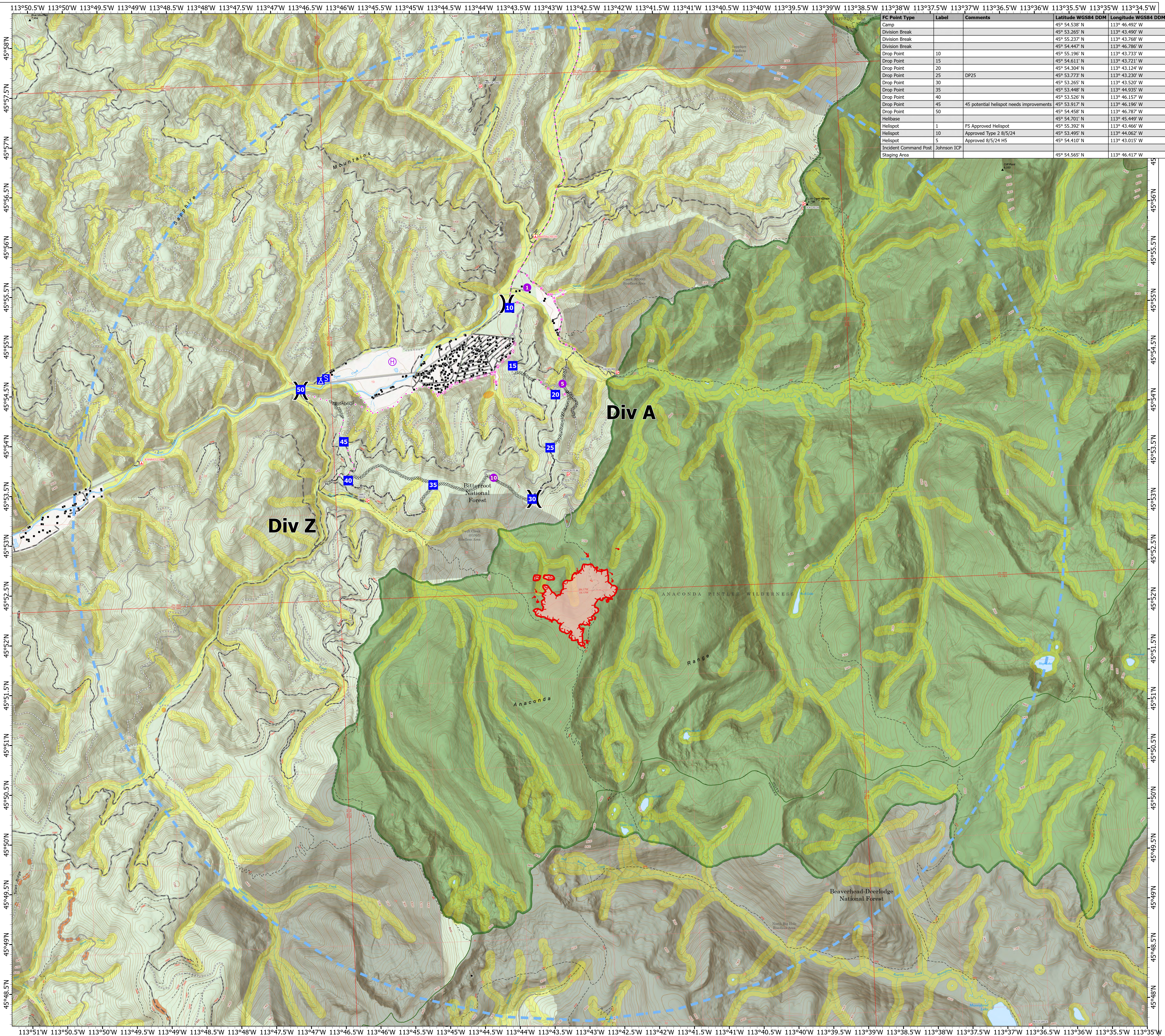
Johnson
MT-BRF-024261
08/10/2024

270 acres at 08/09/2024 @ 1130

- Structure
- Helispot
- ⊕ Helibase
- ⊗ Division Break
- Drop Point
- ⊠ Camp
- ⊡ Staging Area
- ⊞ Completed Dozer Line
- ⊞ Completed Hand Line
- ⊞ Completed Road as Line
- ⊞ Planned Dozer Line
- ⊞ Planned Hand Line
- ⊞ Planned Road as Line
- ⊞ Proposed Line
- Access Route
- Other
- Temporary Flight Restriction
- ⊞ Uncontained
- ⊞ Wildfire Daily Fire Perimeter
- Road, Dirt/Gravel
- Road, Paved
- Road, Dirt/Gravel
- Road, high clearance
- FS Closed Road
- USFS Roadless Areas
- FS Wilderness Study Area Boundary
- FS Wilderness Boundary
- Forest Service Land
- Bureau of Land Management Lands
- AFRAA - Hydro
- AFRAA - TES



1:22,000 | RIST 2024 | 8/9/2024 1927
IR
North American 1983 Datum, LatLong Grid



113°51'W 113°50.5'W 113°50'W 113°49.5'W 113°49'W 113°48.5'W 113°48'W 113°47.5'W 113°47'W 113°46.5'W 113°46'W 113°45.5'W 113°45'W 113°44.5'W 113°44'W 113°43.5'W 113°43'W 113°42.5'W 113°42'W 113°41.5'W 113°41'W 113°40.5'W 113°40'W 113°39.5'W 113°39'W 113°38.5'W 113°38'W 113°37.5'W 113°37'W 113°36.5'W 113°36'W 113°35.5'W 113°35'W 113°34.5'W