

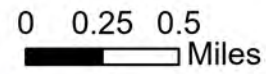
IAP Map

Dillon Creek

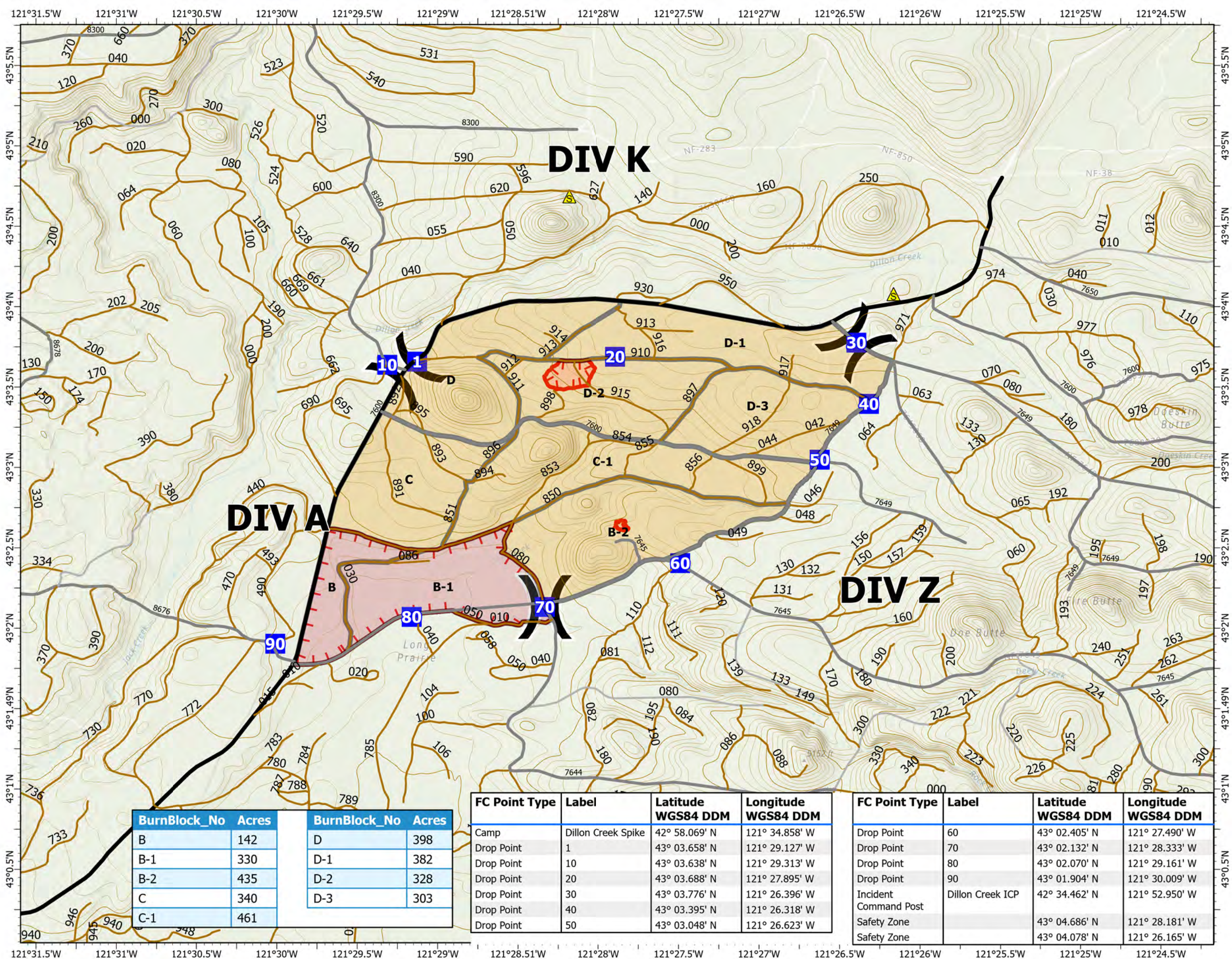
ORFWF-230118

05/25/2023 - Day Shift

499 acres at 05/24/2023 - 1910



- (X) Division Break
- Drop Point
- ▲ Safety Zone
- ▭ Uncontained
- ▭ Wildfire Daily Fire Perimeter
- ▭ Completed
- ▭ Not Complete



BurnBlock_No	Acres	BurnBlock_No	Acres
B	142	D	398
B-1	330	D-1	382
B-2	435	D-2	328
C	340	D-3	303
C-1	461		

FC Point Type	Label	Latitude WGS84 DDM	Longitude WGS84 DDM
Camp	Dillon Creek Spike	42° 58.069' N	121° 34.858' W
Drop Point	1	43° 03.658' N	121° 29.127' W
Drop Point	10	43° 03.638' N	121° 29.313' W
Drop Point	20	43° 03.688' N	121° 27.895' W
Drop Point	30	43° 03.776' N	121° 26.396' W
Drop Point	40	43° 03.395' N	121° 26.318' W
Drop Point	50	43° 03.048' N	121° 26.623' W

FC Point Type	Label	Latitude WGS84 DDM	Longitude WGS84 DDM
Drop Point	60	43° 02.405' N	121° 27.490' W
Drop Point	70	43° 02.132' N	121° 28.333' W
Drop Point	80	43° 02.070' N	121° 29.161' W
Drop Point	90	43° 01.904' N	121° 30.009' W
Incident Command Post	Dillon Creek ICP	42° 34.462' N	121° 52.950' W
Safety Zone		43° 04.686' N	121° 28.181' W
Safety Zone		43° 04.078' N	121° 26.165' W

