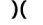




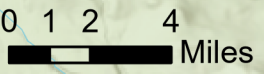


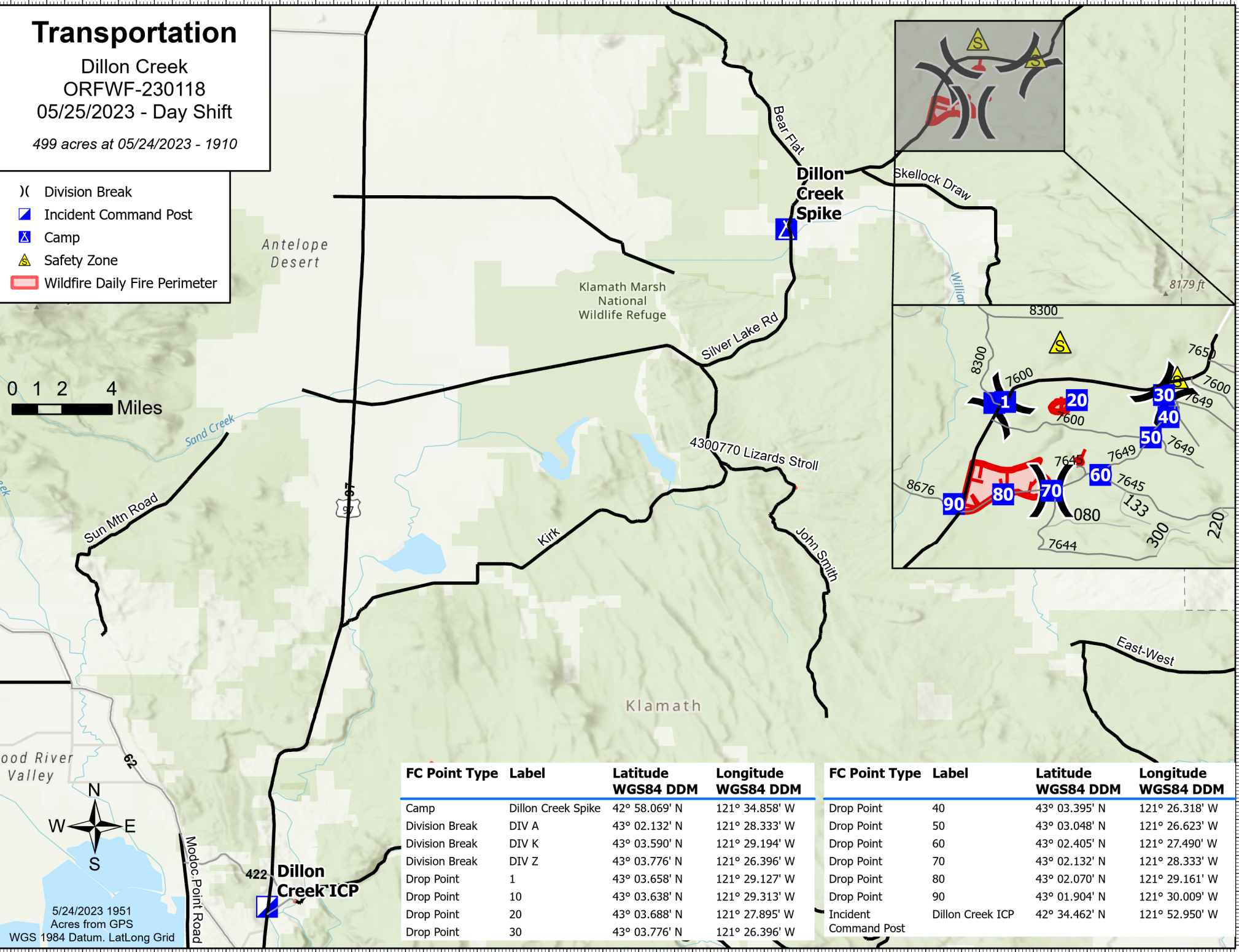
Transportation

Dillon Creek
ORFWF-230118
05/25/2023 - Day Shift
499 acres at 05/24/2023 - 1910

-  Division Break
-  Incident Command Post
-  Camp
-  Safety Zone
-  Wildfire Daily Fire Perimeter



5/24/2023 1951
Acres from GPS
WGS 1984 Datum. LatLong Grid



FC Point Type	Label	Latitude WGS84 DDM	Longitude WGS84 DDM	FC Point Type	Label	Latitude WGS84 DDM	Longitude WGS84 DDM
Camp	Dillon Creek Spike	42° 58.069' N	121° 34.858' W	Drop Point	40	43° 03.395' N	121° 26.318' W
Division Break	DIV A	43° 02.132' N	121° 28.333' W	Drop Point	50	43° 03.048' N	121° 26.623' W
Division Break	DIV K	43° 03.590' N	121° 29.194' W	Drop Point	60	43° 02.405' N	121° 27.490' W
Division Break	DIV Z	43° 03.776' N	121° 26.396' W	Drop Point	70	43° 02.132' N	121° 28.333' W
Drop Point	1	43° 03.658' N	121° 29.127' W	Drop Point	80	43° 02.070' N	121° 29.161' W
Drop Point	10	43° 03.638' N	121° 29.313' W	Drop Point	90	43° 01.904' N	121° 30.009' W
Drop Point	20	43° 03.688' N	121° 27.895' W	Incident Command Post	Dillon Creek ICP	42° 34.462' N	121° 52.950' W
Drop Point	30	43° 03.776' N	121° 26.396' W				