

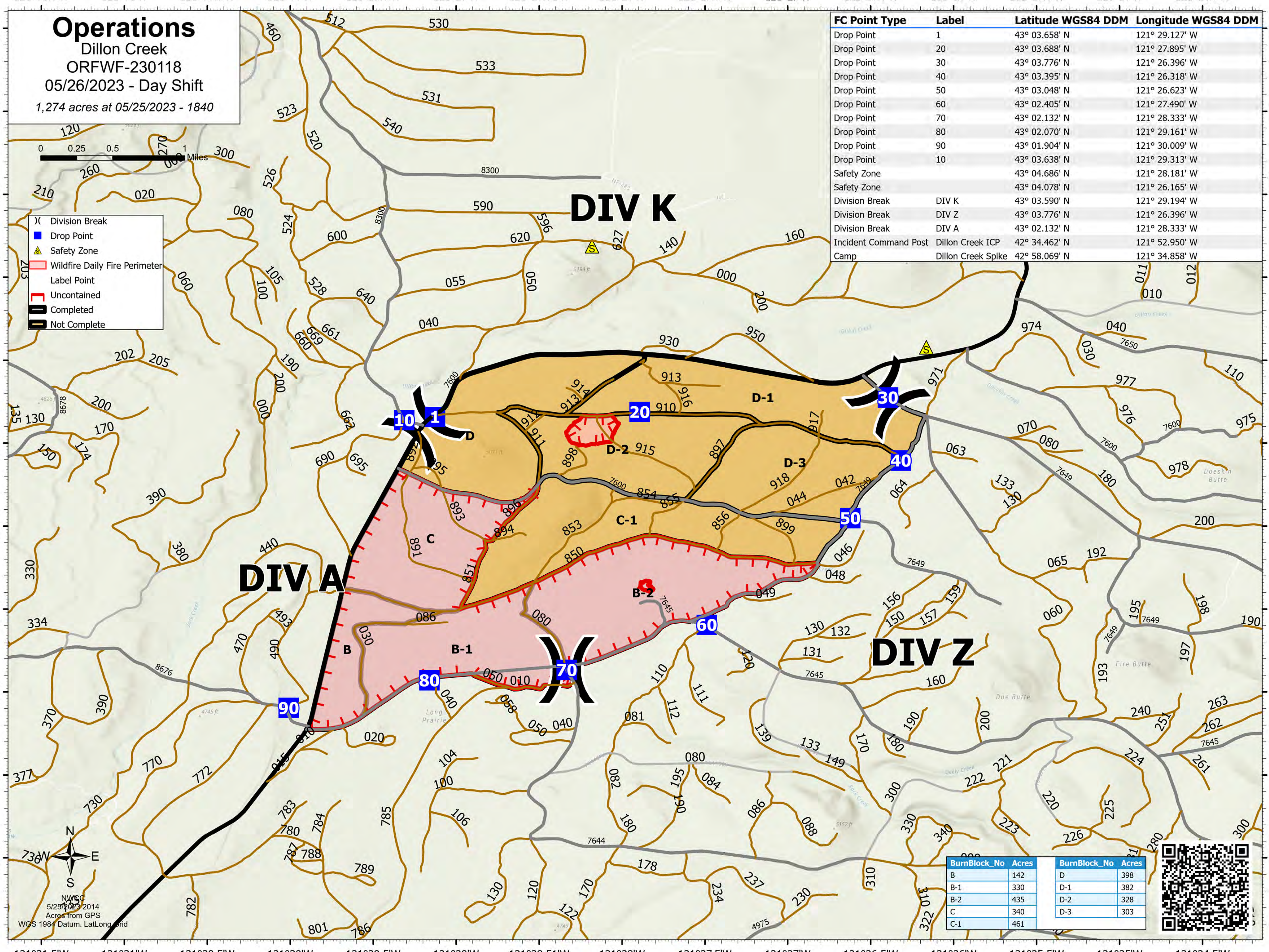
# Operations

Dillon Creek  
ORFW-230118  
05/26/2023 - Day Shift  
1,274 acres at 05/25/2023 - 1840



( )	Division Break
■	Drop Point
▲	Safety Zone
▭	Wildfire Daily Fire Perimeter
●	Label Point
▭	Uncontained
▭	Completed
▭	Not Complete

FC Point Type	Label	Latitude WGS84 DDM	Longitude WGS84 DDM
Drop Point	1	43° 03.658' N	121° 29.127' W
Drop Point	20	43° 03.688' N	121° 27.895' W
Drop Point	30	43° 03.776' N	121° 26.396' W
Drop Point	40	43° 03.395' N	121° 26.318' W
Drop Point	50	43° 03.048' N	121° 26.623' W
Drop Point	60	43° 02.405' N	121° 27.490' W
Drop Point	70	43° 02.132' N	121° 28.333' W
Drop Point	80	43° 02.070' N	121° 29.161' W
Drop Point	90	43° 01.904' N	121° 30.009' W
Drop Point	10	43° 03.638' N	121° 29.313' W
Safety Zone		43° 04.686' N	121° 28.181' W
Safety Zone		43° 04.078' N	121° 26.165' W
Division Break	DIV K	43° 03.590' N	121° 29.194' W
Division Break	DIV Z	43° 03.776' N	121° 26.396' W
Division Break	DIV A	43° 02.132' N	121° 28.333' W
Incident Command Post	Dillon Creek ICP	42° 34.462' N	121° 52.950' W
Camp	Dillon Creek Spike	42° 58.069' N	121° 34.858' W



BurnBlock_No	Acres	BurnBlock_No	Acres
B	142	D	398
B-1	330	D-1	382
B-2	435	D-2	328
C	340	D-3	303
C-1	461		



NWCG  
5/25/2023 2014  
Acres from GPS  
WGS 1984 Datum, Lat/Long Grid