

Operations

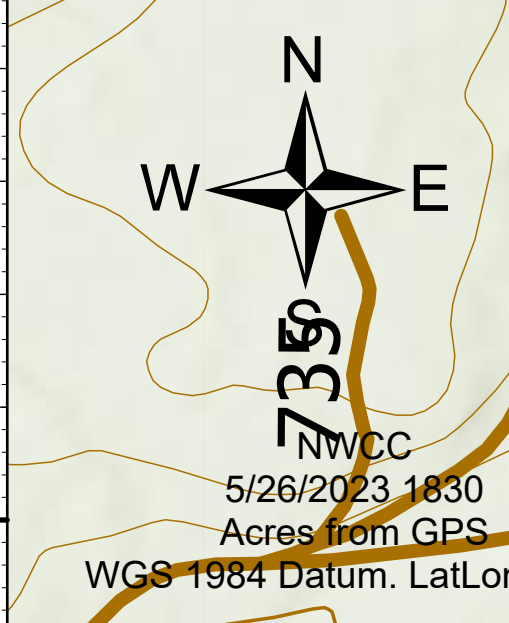
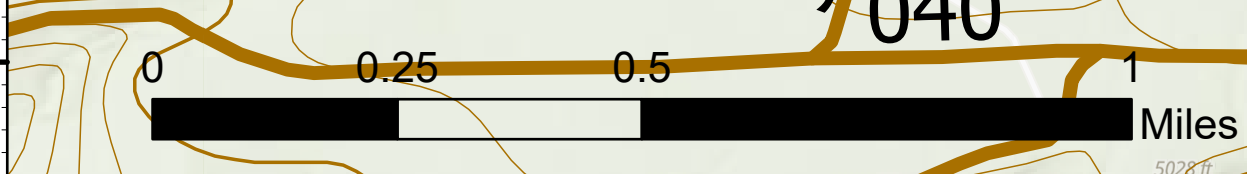
Dillon Creek
ORFW-230118
05/27/2023 - Day Shift

2,737 acres at 05/26/2023 - 1800

FC Point Type	Label	Latitude WGS84 DDM	Longitude WGS84 DDM
Drop Point	1	43° 03.658' N	121° 29.127' W
Drop Point	20	43° 03.688' N	121° 27.885' W
Drop Point	30	43° 03.776' N	121° 26.396' W
Drop Point	40	43° 03.395' N	121° 26.318' W
Drop Point	50	43° 03.048' N	121° 26.623' W
Drop Point	60	43° 02.405' N	121° 27.490' W
Drop Point	70	43° 02.132' N	121° 28.333' W
Drop Point	80	43° 02.070' N	121° 29.161' W
Drop Point	90	43° 01.904' N	121° 30.009' W
Drop Point	10	43° 03.638' N	121° 29.313' W
Safety Zone		43° 04.686' N	121° 26.181' W
Safety Zone		43° 04.078' N	121° 26.165' W
Division Break	DIV K	43° 03.590' N	121° 26.194' W
Division Break	DIV Z	43° 03.776' N	121° 26.396' W
Division Break	DIV A	43° 02.132' N	121° 28.333' W
Incident Command Post	Dillon Creek ICP	42° 34.462' N	121° 52.950' W
Camp	Dillon Creek Spike	42° 58.069' N	121° 34.858' W

Legend

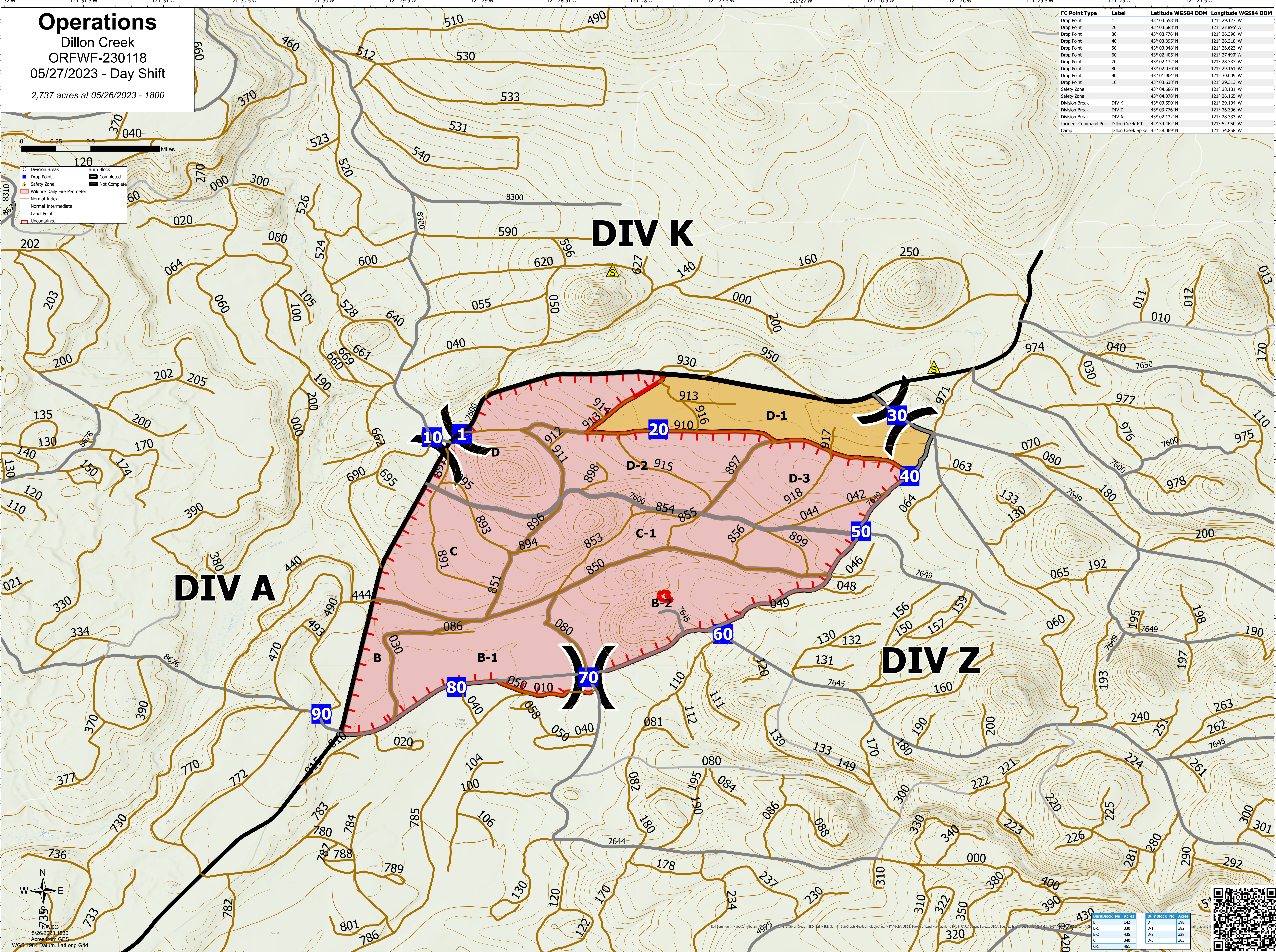
- Division Break
- Drop Point
- Safety Zone
- Wildfire Daily Fire Perimeter
- Normal Index
- Normal Intermediate
- Label Point
- Uncontained
- Burn Block
- Completed
- Not Completed



WGS 1984 Datum, Lat/Long Grid
5/26/2023 1800
Acres from GPS

121°32'W 121°31.5'W 121°31'W 121°30.5'W 121°30'W 121°29.5'W 121°29'W 121°28.5'W 121°28'W 121°27.5'W 121°27'W 121°26.5'W 121°26'W 121°25.5'W 121°25'W 121°24.5'W

43°6'N 43°5.5'N 43°5'N 43°4.5'N 43°4'N 43°3.5'N 43°3'N 43°2.5'N 43°2'N 43°1.5'N 43°1'N 43°0.5'N 43°0'N



BurnBlock_No	Acres	BurnBlock_No	Acres
D	142	B-2	398
B-1	330	D-1	382
B-2	435	D-2	328
C	340	D-3	303
C-1	461		

