

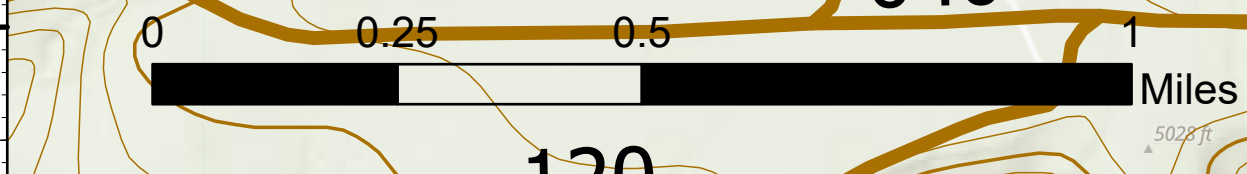
Progression

Dillon Creek
ORFW-230118
05/28/2023 - Day Shift
3,119 acres at 05/27/2023 - 1740

FC Point Type	Label	Latitude WGS84 DDM	Longitude WGS84 DDM
Drop Point	1	43° 03.658' N	121° 29.127' W
Drop Point	20	43° 03.688' N	121° 27.885' W
Drop Point	30	43° 03.776' N	121° 26.396' W
Drop Point	40	43° 03.395' N	121° 26.318' W
Drop Point	50	43° 03.048' N	121° 26.623' W
Drop Point	60	43° 02.405' N	121° 27.490' W
Drop Point	70	43° 02.132' N	121° 28.333' W
Drop Point	80	43° 02.070' N	121° 29.161' W
Drop Point	90	43° 01.904' N	121° 30.009' W
Drop Point	10	43° 03.638' N	121° 29.313' W
Safety Zone		43° 04.686' N	121° 28.181' W
Safety Zone		43° 04.078' N	121° 26.165' W
Division Break	DIV K	43° 03.590' N	121° 26.194' W
Division Break	DIV Z	43° 03.776' N	121° 26.396' W
Division Break	DIV A	43° 02.132' N	121° 28.333' W
Incident Command Post	Dillon Creek ICP	42° 34.462' N	121° 52.950' W
Camp	Dillon Creek Spike	42° 58.069' N	121° 34.858' W

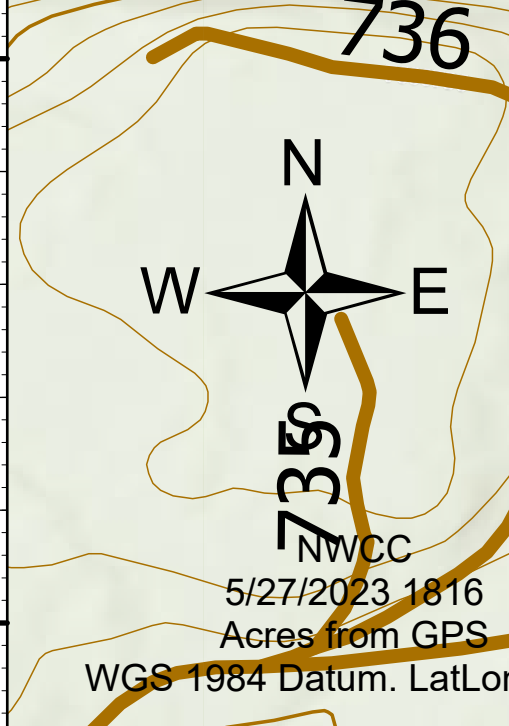
FC Point Type	Label	Latitude WGS84 DDM	Longitude WGS84 DDM
Drop Point	1	43° 03.658' N	121° 29.127' W
Drop Point	20	43° 03.688' N	121° 27.885' W
Drop Point	30	43° 03.776' N	121° 26.396' W
Drop Point	40	43° 03.395' N	121° 26.318' W
Drop Point	50	43° 03.048' N	121° 26.623' W
Drop Point	60	43° 02.405' N	121° 27.490' W
Drop Point	70	43° 02.132' N	121° 28.333' W
Drop Point	80	43° 02.070' N	121° 29.161' W
Drop Point	90	43° 01.904' N	121° 30.009' W
Drop Point	10	43° 03.638' N	121° 29.313' W
Safety Zone		43° 04.686' N	121° 28.181' W
Safety Zone		43° 04.078' N	121° 26.165' W
Division Break	DIV K	43° 03.590' N	121° 26.194' W
Division Break	DIV Z	43° 03.776' N	121° 26.396' W
Division Break	DIV A	43° 02.132' N	121° 28.333' W
Incident Command Post	Dillon Creek ICP	42° 34.462' N	121° 52.950' W
Camp	Dillon Creek Spike	42° 58.069' N	121° 34.858' W

Wildfire Daily Fire Perimeter	Acres	Change
20230523 @ 1200	27ac	+27ac
20230524 @ 1910	499ac	+472ac
20230525 @ 1911	1,274ac	+775ac
20230526 @ 1800	2,737ac	+1,463ac
20230527 @ 1753	3,120ac	+383ac



- Division Break
- Drop Point
- Safety Zone
- Contained
- Uncontained
- Wildfire Daily Fire Perimeter

Wildfire Daily Fire Perimeter	Acres	Change
20230523 @ 1200	27ac	+27ac
20230524 @ 1910	499ac	+472ac
20230525 @ 1911	1,274ac	+775ac
20230526 @ 1800	2,737ac	+1,463ac
20230527 @ 1753	3,120ac	+383ac



43°00.5'N 121°32.0'W 121°31.5'W 121°31.0'W 121°30.5'W 121°30.0'W 121°29.5'W 121°29.0'W 121°28.5'W 121°28.0'W 121°27.5'W 121°27.0'W 121°26.5'W 121°26.0'W 121°25.5'W 121°25.0'W 121°24.5'W