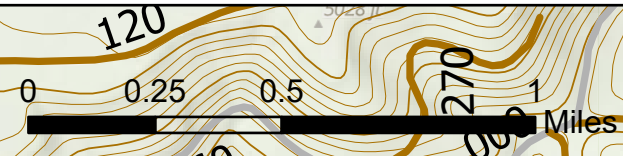


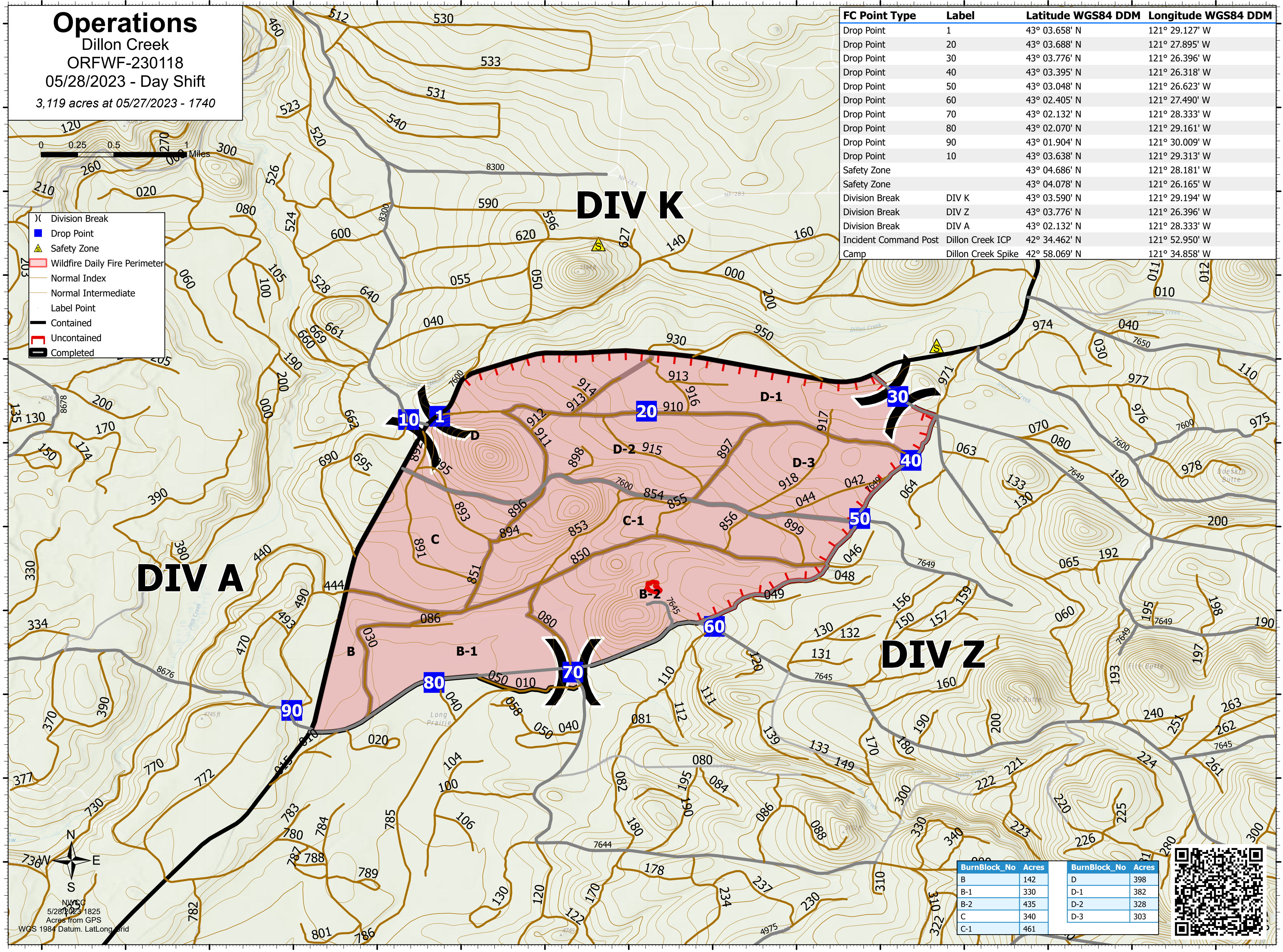
Operations

Dillon Creek
ORFWF-230118
05/28/2023 - Day Shift
3,119 acres at 05/27/2023 - 1740



- () Division Break
- Drop Point
- ▲ Safety Zone
- ▭ Wildfire Daily Fire Perimeter
- Normal Index
- Normal Intermediate
- Label Point
- ▬ Contained
- ▬ Uncontained
- ▬ Completed

| FC Point Type | Label | Latitude WGS84 DDM | Longitude WGS84 DDM |
|-----------------------|--------------------|--------------------|---------------------|
| Drop Point | 1 | 43° 03.658' N | 121° 29.127' W |
| Drop Point | 20 | 43° 03.688' N | 121° 27.895' W |
| Drop Point | 30 | 43° 03.776' N | 121° 26.396' W |
| Drop Point | 40 | 43° 03.395' N | 121° 26.318' W |
| Drop Point | 50 | 43° 03.048' N | 121° 26.623' W |
| Drop Point | 60 | 43° 02.405' N | 121° 27.490' W |
| Drop Point | 70 | 43° 02.132' N | 121° 28.333' W |
| Drop Point | 80 | 43° 02.070' N | 121° 29.161' W |
| Drop Point | 90 | 43° 01.904' N | 121° 30.009' W |
| Drop Point | 10 | 43° 03.638' N | 121° 30.913' W |
| Safety Zone | | 43° 04.686' N | 121° 28.181' W |
| Safety Zone | | 43° 04.078' N | 121° 26.165' W |
| Division Break | DIV K | 43° 03.590' N | 121° 29.194' W |
| Division Break | DIV Z | 43° 03.776' N | 121° 26.396' W |
| Division Break | DIV A | 43° 02.132' N | 121° 28.333' W |
| Incident Command Post | Dillon Creek ICP | 42° 34.462' N | 121° 52.950' W |
| Camp | Dillon Creek Spike | 42° 58.069' N | 121° 34.858' W |



| BurnBlock_No | Acres | BurnBlock_No | Acres |
|--------------|-------|--------------|-------|
| B | 142 | D | 398 |
| B-1 | 330 | D-1 | 382 |
| B-2 | 435 | D-2 | 328 |
| C | 340 | D-3 | 303 |
| C-1 | 461 | | |



NW50
5/28/2023 1825
Acres from GPS
WGS 1984 Datum, LatLong Grid