

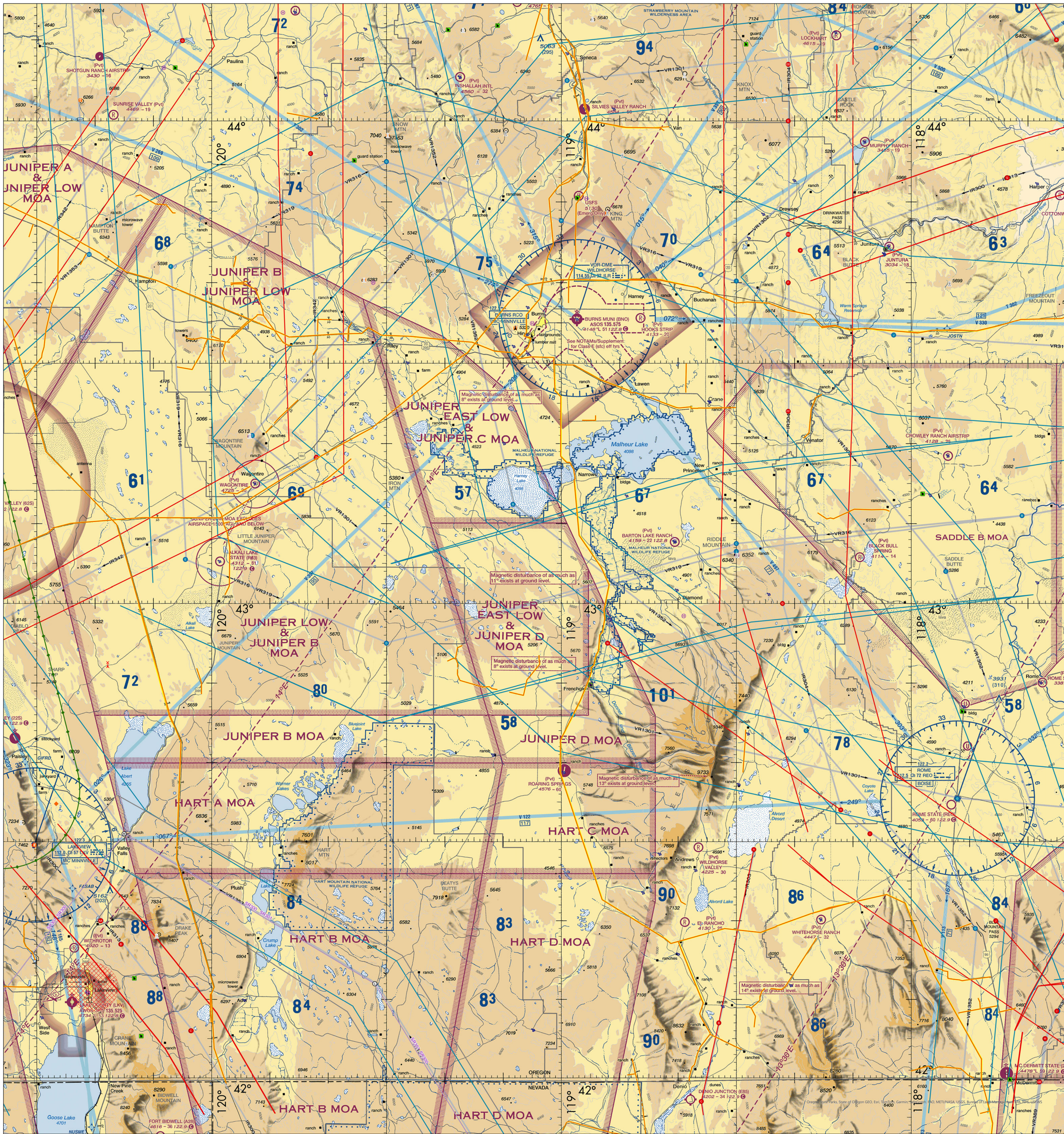
Known Aviation Hazards

Burns Interagency Communication Center



Revised: 5/30/2024

Scale: 1:405,000



AIRPORTS (Airports having Control Towers are shown in Blue, all others Magenta) ○ Other than hard-surfaced runways ⬇ Seaplane Base ⬆ Hard-surfaced runways 1500 ft. to 8000 ft. in length ⬆ Hard-surfaced runways 1500 ft. to 8000 ft. in length ⬆ Open dirt within hard-surfaced runway ⬆ Configuration indicates approximate VOR, VOR-DME, or VORTAC location. All recognizable hard-surfaced runways, including those closed, are shown for visual identification. Airports may be public or private.	ADDITIONAL AIRPORT INFORMATION Private (PVT) - Non-public use having emergency or landmark value Military - Other than hard-surfaced, all military airports are identified by abbreviations AFB, NAS, AAF, etc. DoD users, for complete airport information consult DoD FLIP. Heliport - Unimproved Unimproved - paved Abandoned - paved Ultraport - Selected Rotating airport beacon in operation Sunset to Sunrise	AIRPORT TRAFFIC SERVICE AND AIRSPACE INFORMATION Only the controlled and reserved airspace effective below 18,000 ft. MSL are shown on this chart. All times are local. Class B Airspace Class C Airspace (Mode C - see FAR 91.215AM) Class D Airspace Class E Airspace Class E Airspace with floor 700 ft. above surface Class E Airspace with floor 1200 ft. or greater above surface that abuts Class G Airspace 2400 MSL 4500 MSL 1320 1090 Total mileage between NAVAIDs on direct Airways are indicated by center line. Class E Airspace low altitude RNAV Routes are indicated by center line. 1319 TK 313 RWAV RWAV	MISCELLANEOUS -E- Isogonic Line (2010 VALUE) Ultraport Hang Glider Activity Glider Operations Unimproved Aircraft Activity Parachute Jumping Areas (See Airport/Facility Directory) Marine Light VPXYZ NAME (VPXYZ) VFR Waypoints (See Airport/Facility Directory for latitude/longitude) Falcon Avoidance Area (1000 ft Vertical separation)	LOCALLY IDENTIFIED VERTICAL OBSTRUCTIONS Towers, lookouts and repeaters of unknown height shown in Black. Towers, lookouts and repeaters of 2000 ft. AGL shown in gray. All others shown in Red. Tower Lookout Repeater Overhead Cables Blasting Area Radio Base Site Radio Secondary Base Site Bridges Main Power Lines Wire Hazards Aerial Recreational Areas Retardant Jetson Areas Hang Glider Sites Glider Operation Area Ballooning/Paragliding Sites Rocket Launch Sites Military Training Routes Visual Route Leg Identifier Visual Route Outer Boundary Instrument Route Leg Identifier Instrument Route Outer Boundary Slow Route Leg Identifier Slow Route Outer Boundary Slow Route Line	NATIONAL WIND FACILITY HAZARDS (FAA) Met Towers > 200 ft. AGL Met Towers > 200 ft. AGL Windmills of Unknown Height Windmills < 200 ft. AGL Windmills > 200 ft. AGL Wind Farm > 200 ft. AGL Wind Farm > 200 ft. AGL ADMINISTRATIVE FEATURES Guard Stations Dispatch Areas Aerial Refuel Routes AR350V, AR350V	<p>The USDA Forest Service makes no warranty as to the accuracy, reliability or completeness of these data for individual or aggregate use with other data. Original data were compiled from various sources. This information may not meet National Map Accuracy Standards. This product was developed through digital means and may be updated without notification.</p> <p>Note: Not all legend items may appear in the map extent.</p>
---	--	---	---	--	--	--