

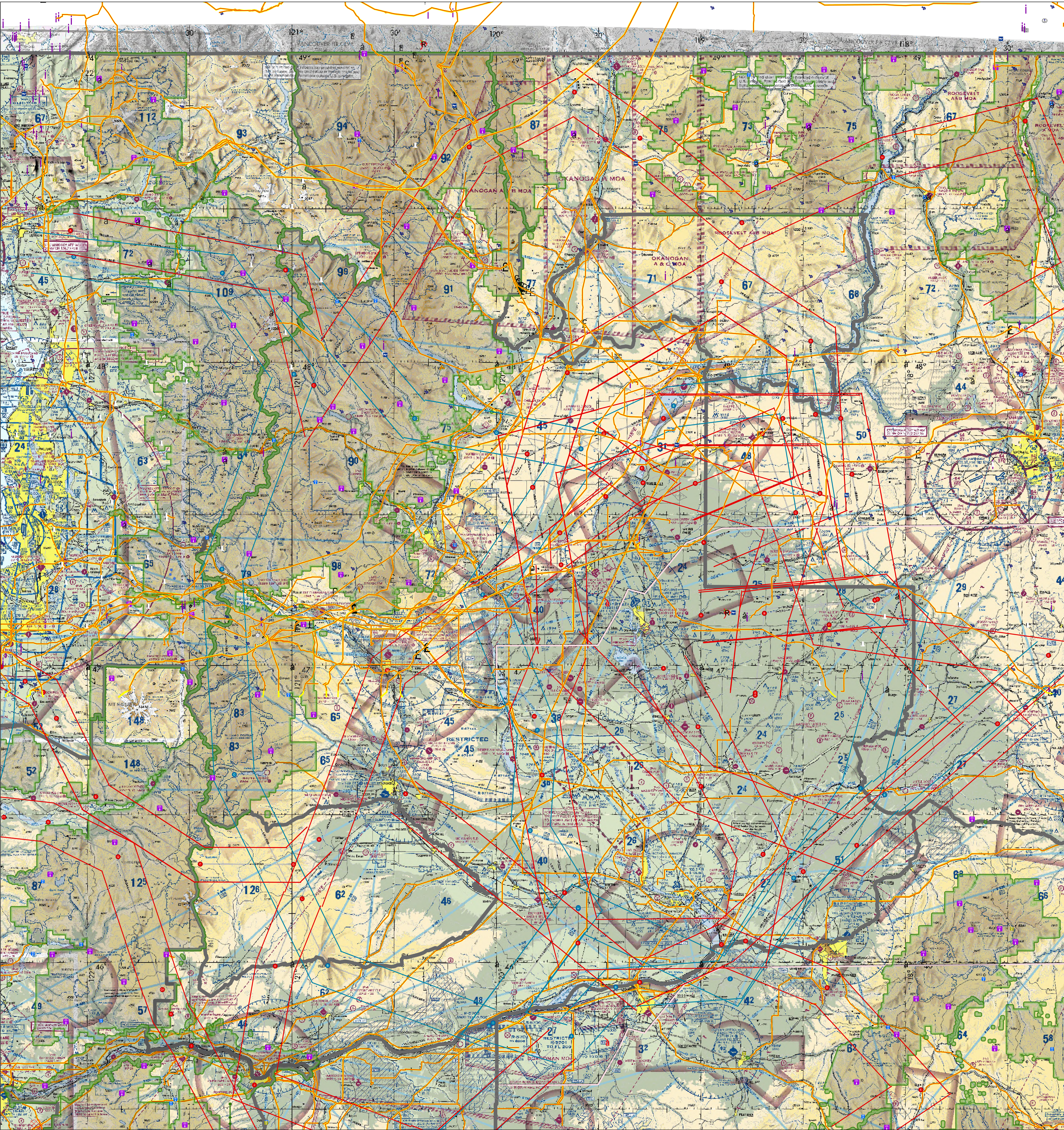
Known Aviation Hazards

Revised: 5/1/2025

Central Washington Interagency Communication Center

Scale: 1:691,000

0 10 20 40 Miles



AIRPORTS
(Airports having Control Towers are shown in Blue, all others Magenta)

- Other than hard-surfaced runways
- Hard-surfaced runways 1500 ft. to 8000 ft. in length
- Open air within hard-surfaced runway
- Configuration indicates approximate VOR, VOR-DME, or VORTAC location
- All recognizable hard-surfaced runways, including those closed, are shown for visual identification. Airports may be public or private.

TOPOGRAPHIC INFORMATION

- Power Transmission Line
- Aerial Cable
- Lookout Tower
- Mountain Pass

ADDITIONAL AIRPORT INFORMATION

- Private (Pvt) - Non-public use having emergency or landmark value
- Military - Other than hard-surfaced, all military airports are identified by abbreviations AFB, NAS, AAF, etc. DoD users, for complete report information consult DOD FLIR
- Unimproved
- Abandoned - paved having landmark value, 3000 ft. or greater
- Ultralight
- Flight Park
- Selected

Rotating airport beacon in operation Sunset to Sunrise

AIRPORT TRAFFIC SERVICE AND AIRSPACE INFORMATION
Only the controlled and reserved airspace effective below 18,000 ft. MSL are shown on this chart. All times are local.

Class B Airspace
Class C Airspace Mode C - see FAR 91.215(AIM)

Class D Airspace
Class E Airspace exists at 1200' AGL unless otherwise designated as shown above. Class E Airspace low altitude Federal Airways are indicated by center line. Class E Airspace are directed towards facilities which establish intersection.

Class E (M) Airspace
Class E Airspace with floor 700 ft. above surface

Class E Airspace with floor 1200 ft. or greater above surface that abuts Class G Airspace

Class E Airspace low altitude RNAV Routes are indicated by center line.

Class E Airspace low altitude RNAV Routes are indicated by center line.

Class E Airspace low altitude RNAV Routes are indicated by center line.

MISCELLANEOUS

- Isogonic Line (2010 VALUE)
- Practice Smokejumper Area
- Ultralight Activity
- Hang Glider Activity
- Unmanned Aircraft Activity
- Parachute Jumping Area (See Airport/Facility Directory)
- Marine Light
- VPXYZ VFR Waypoints (See Airport/Facility Directory for latitude/longitude)
- Falcon Avoidance Area (1000 ft. Vertical separation)

LOCALLY IDENTIFIED VERTICAL OBSTRUCTIONS
(Towers, lookouts and repeaters of unknown height shown in Black. Towers, lookouts and repeaters < 200 ft. AGL shown in gray. All others shown in Red)

- Lookout
- Repeater
- Overhead Cables
- Blasting Area
- Radio Base Site
- Radio Avionics Site
- Radio Secondary Base Site
- Bridge
- Wire Hazards
- Aerial Recreation Areas

Military Training Routes

- Visual Route Leg Identifier
- Visual Route Outer Boundary
- Instrument Route Leg Identifier
- Instrument Route Outer Boundary
- Slow Route Leg Identifier
- Slow Route Outer Boundary
- Slow Route Line

NATIONAL WIND FACILITY HAZARDS (FAA)

- Met Towers < 200 ft. AGL
- Met Towers > 200 ft. AGL
- Windmills of Unknown Height
- Windmills < 200 ft. AGL
- Windmills > 200 ft. AGL
- Wind Farm > 200 ft. AGL
- Wind Farm > 200 ft. AGL

ADMINISTRATIVE FEATURES

- Guard Stations
- Dispatch Areas
- Aerial Refuel Routes
- AR305AV, AR305BV

The USDA Forest Service makes no warranty as to the accuracy, reliability or completeness of these data for individual or aggregate use with other data. Original data were compiled from various sources. This information may not meet National Map Accuracy Standards. This product was developed through digital means and may be updated without notification.

Note: Not all legend items may appear in the map extent.