

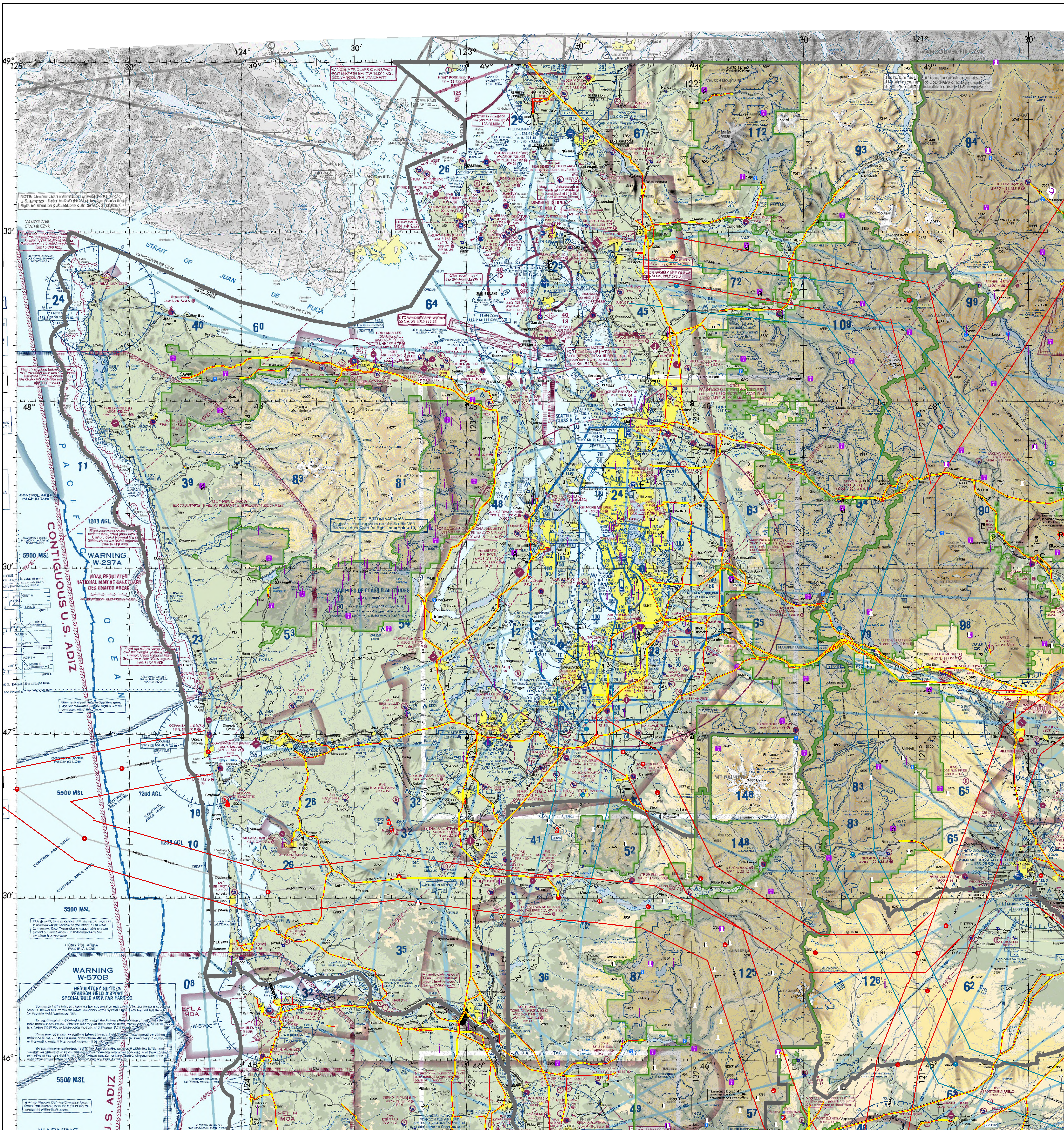
Known Aviation Hazards

Puget Sound Interagency Coordination Center

Revised: 5/1/2025

Scale: 1:629,000

0 10 20 40 Miles



AIRPORTS

(Airports having Control Towers are shown in Blue, all others Magenta)

- Other than hard-surfaced runways
- Hard-surfaced runways 1500 ft. to 8000 ft. in length
- Hard-surfaced runways 1500 ft. to 8000 ft. in length
- Open air within hard-surfaced runways
- Configuration indicates approximate VOR, VOR-DME, or VORTAC location

All recognizable hard-surfaced runways, including those closed, are shown for visual identification. Airports may be public or private.

ADDITIONAL AIRPORT INFORMATION

- Private (PVT) - Non-public use having emergency or
- Military - Other than hard-surfaced, all military airports are identified by abbreviations AFB, NAS, AAF, etc. DOD users, for complete airport information consult DOD FLIP.
- Helipoint
- Unimproved
- Abandoned - paved
- Ultraplight
- Flight Park
- 3000 ft. or greater

TOPOGRAPHIC INFORMATION

- Power Transmission Line
- Aerial Cable
- Lookout Tower
- 618 (Elevation Base of Tower)
- Mountain Pass
- 11823 (Elevation of Pass)

Rotating airport beacon in operation Sunset to Sunrise

AIRPORT TRAFFIC SERVICE AND AIRSPACE INFORMATION

Only the controlled and reserved airspace effective below 18,000 ft. MSL are shown on this chart. All times are local.

- Class B Airspace
- Class C Airspace
- Class D Airspace
- Class E Airspace
- Class G Airspace

Class E Airspace with floor 700 ft. above surface

Class E Airspace with floor 1200 ft. or greater above surface than Class G Airspace

Class E Airspace low altitude Federal Airways are indicated by center line

Class E Airspace low altitude RNAV routes are indicated by center line.

MISCELLANEOUS

- Practice Smokejumper Area
- Ultraplight
- Hang Glider Activity
- Gliders
- Unmanned Aircraft Activity
- Parachute Jumping Area (See Airport/Facility Directory)
- Marine Light
- Between NAVD83 and direct Airways
- National Security Area
- Terminal Radar Service Area (TRSA)
- MTR - Military Training Route
- VFR Waypoints (See Airport/Facility Directory for latitude/longitude)
- Falcon Avoidance Area (1000 ft. Vertical separation)

LOCALLY IDENTIFIED VERTICAL OBSTRUCTIONS

(Towers, obstructions and repeaters of unknown height shown in Black, Towers, obstructions and repeaters < 2000 ft. AGL shown in Gray, All others shown in Red)

- Lookout
- Repeater
- Overhead Cables
- Blasting Area
- Radio Avionics Site
- Radio Secondary Base Site
- Bridge
- Main Power Lines
- Wire Hazards
- Aerial Recreation Areas

NATIONAL WIND FACILITY HAZARDS (FAA)

- Met Towers < 200 ft. AGL
- Met Towers > 200 ft. AGL
- Windmills of Unknown Height
- Windmills < 200 ft. AGL
- Windmills > 200 ft. AGL
- Wind Farm < 200 ft. AGL
- Wind Farm > 200 ft. AGL

ADMINISTRATIVE FEATURES

- Guard Stations
- Dispatch Areas
- Aerial Refuel Routes
- AR305AV, AR305BV

Military Training Routes

- Visual Route Log Identifier
- Visual Route Outer Boundary
- Instrument Route Log Identifier
- Instrument Route Outer Boundary
- Slow Route Log Identifier
- Slow Route Outer Boundary
- Slow Route Line

Note: Not all legend items may appear in the map extent.