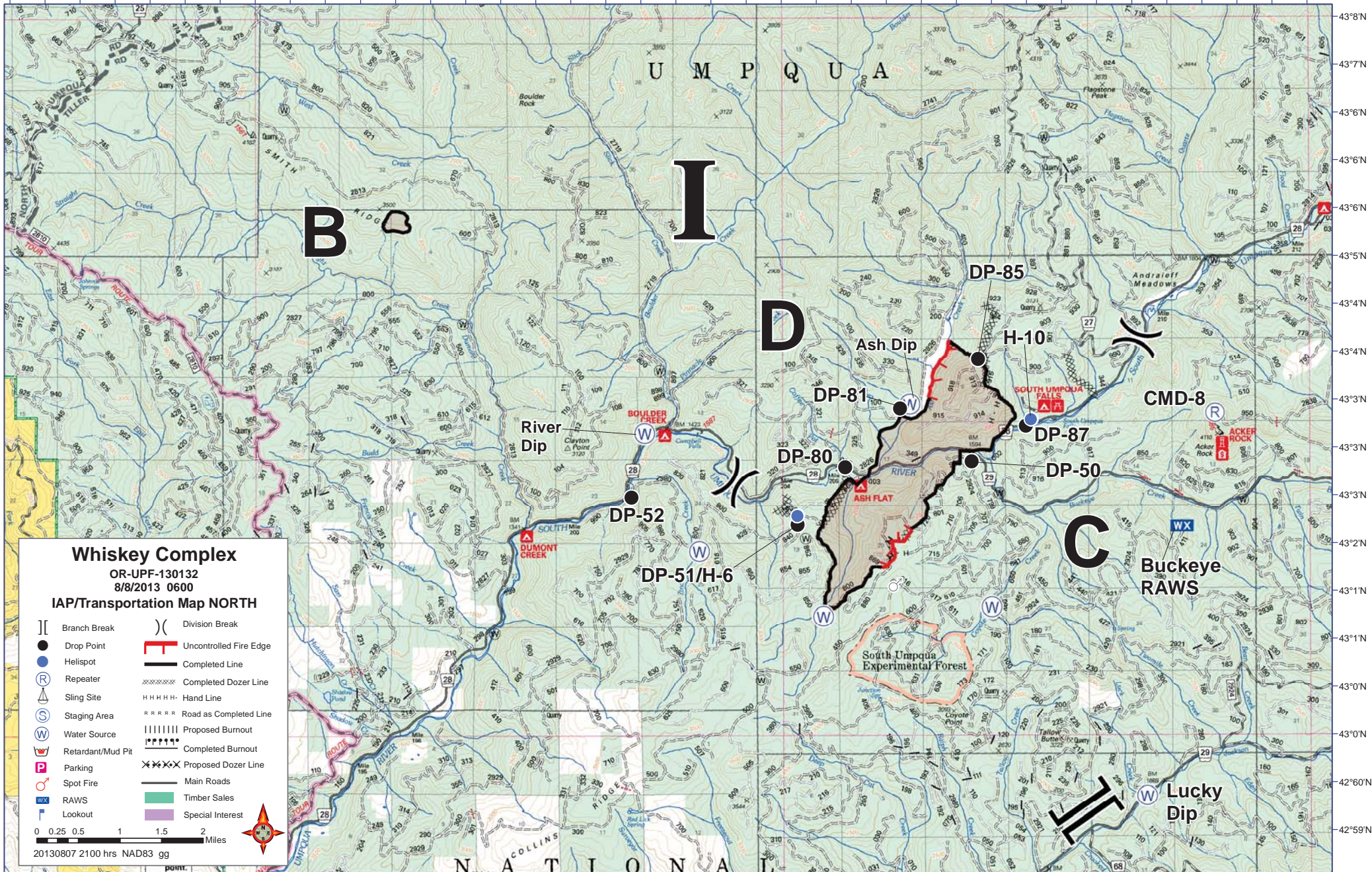


122°56'W 122°54'W 122°54'W 122°53'W 122°51'W 122°51'W 122°49'W 122°48'W 122°48'W 122°46'W 122°45'W 122°45'W 122°44'W 122°42'W 122°42'W 122°41'W 122°39'W 122°39'W 122°38'W



Whiskey Complex
 OR-UPF-130132
 8/8/2013 0600
 IAP/Transportation Map NORTH

	Branch Break		Division Break
	Drop Point		Uncontrolled Fire Edge
	Helispot		Completed Line
	Repeater		Completed Dozer Line
	Sling Site		Hand Line
	Staging Area		Road as Completed Line
	Water Source		Proposed Burnout
	Retardant/Mud Pit		Completed Burnout
	Parking		Proposed Dozer Line
	Spot Fire		Main Roads
	RAWS		Timber Sales
	Lookout		Special Interest

0 0.25 0.5 1 1.5 2 Miles

20130807 2100 hrs NAD83 gg