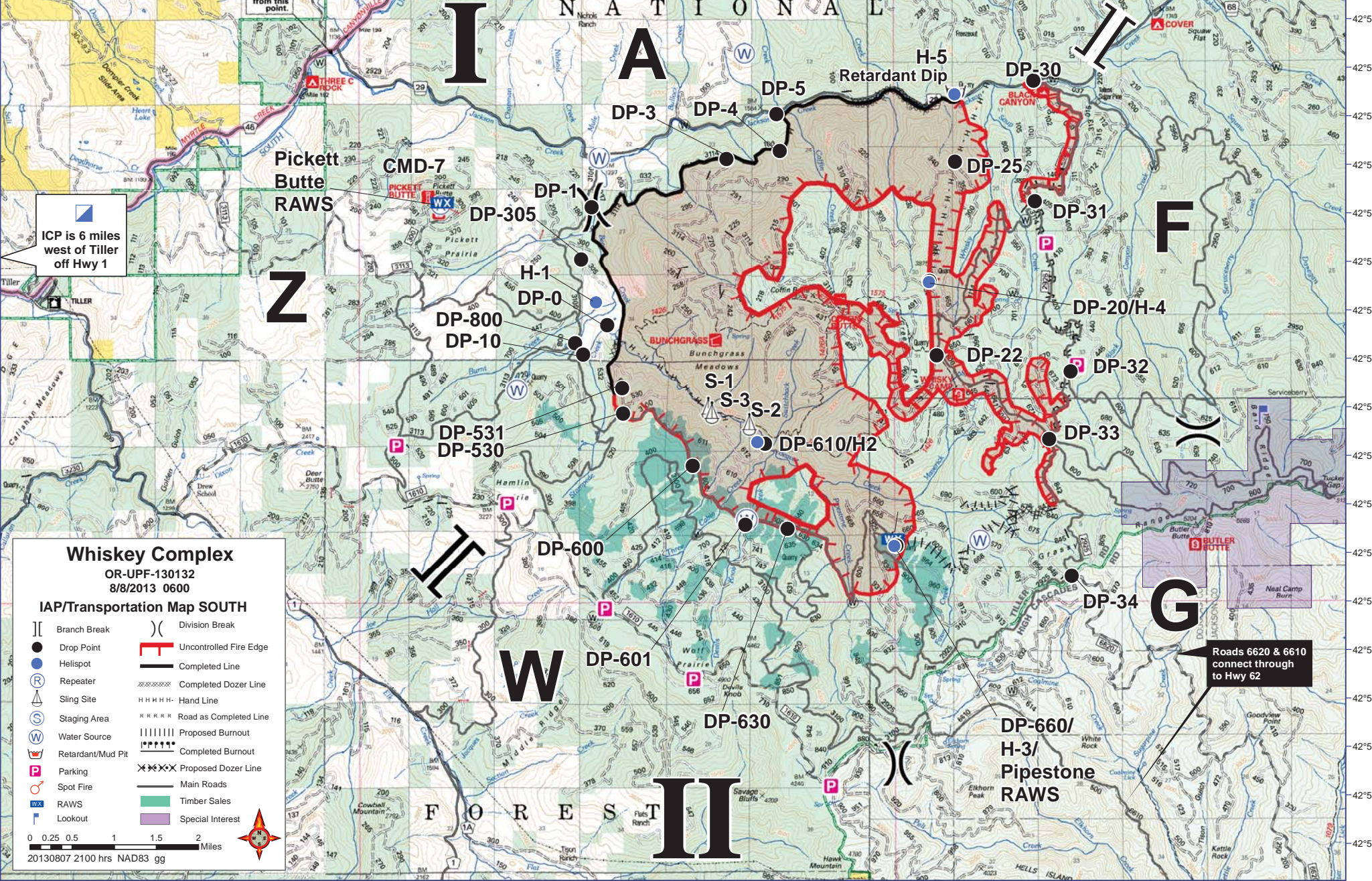


122°57'W 122°56'W 122°55'W 122°54'W 122°53'W 122°52'W 122°51'W 122°50'W 122°49'W 122°48'W 122°47'W 122°46'W 122°45'W 122°44'W 122°43'W 122°42'W 122°41'W 122°40'W 122°39'W



ICP is 6 miles west of Tiller off Hwy 1

**Whiskey Complex**  
OR-UPF-130132  
8/8/2013 0600

**IAP/Transportation Map SOUTH**

	Branch Break	)	Division Break
●	Drop Point	—	Uncontrolled Fire Edge
●	Helispot	—	Completed Line
⊙	Repeater	—	Completed Dozer Line
⊙	Sling Site	—	Completed Burnout
⊙	Staging Area	—	Proposed Burnout
⊙	Water Source	—	Completed Burnout
⊙	Retardant/Mud Pit	—	Proposed Dozer Line
⊙	Parking	—	Main Roads
⊙	Spot Fire	—	Timber Sales
⊙	RAWS	—	Special Interest
⊙	Lookout		

0 0.25 0.5 1 1.5 2 Miles

20130807 2100 hrs NAD83 gg

Roads 6620 & 6610 connect through to Hwy 62