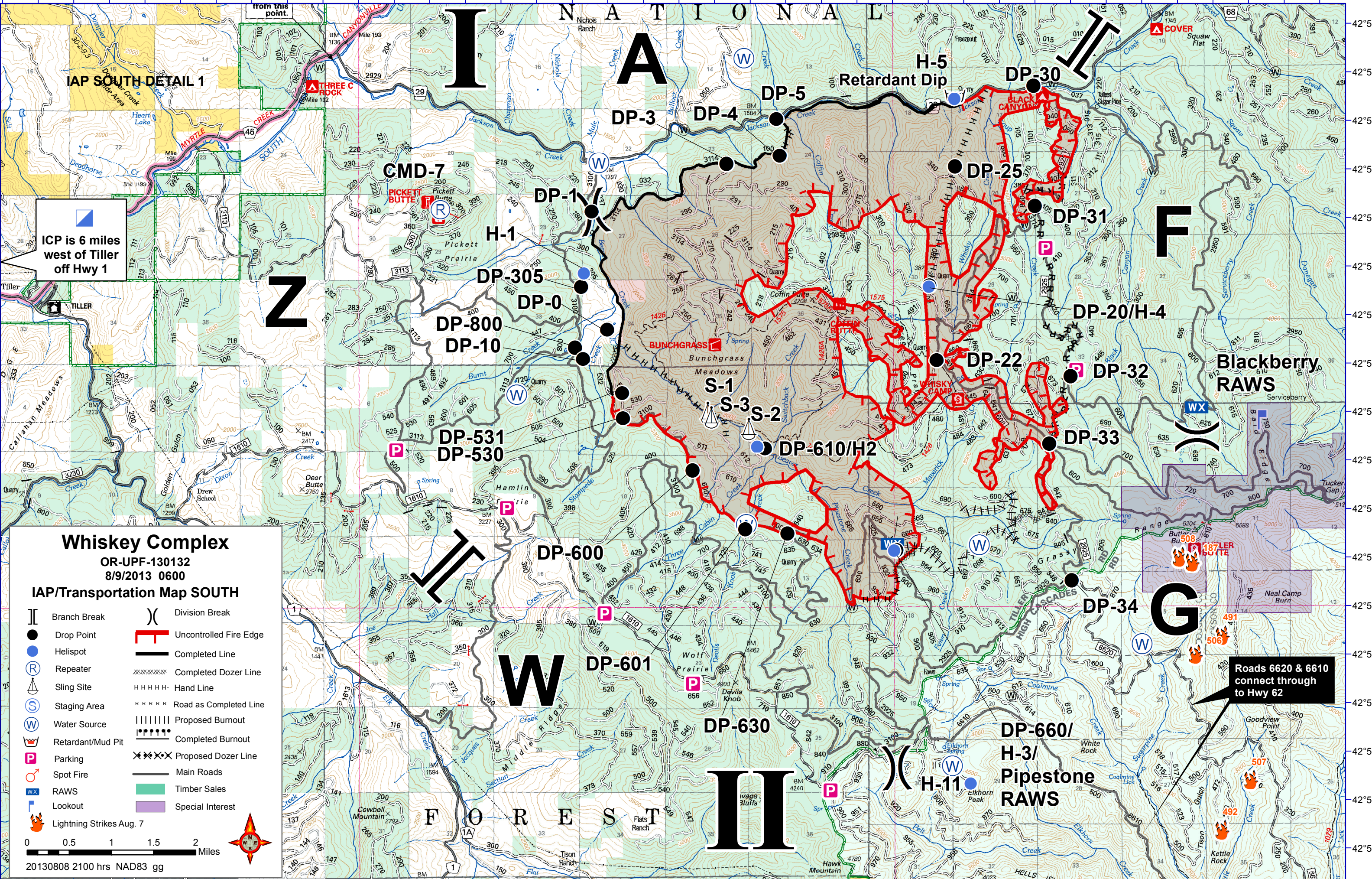


122°57'W 122°56'W 122°55'W 122°54'W 122°53'W 122°52'W 122°51'W 122°50'W 122°49'W 122°48'W 122°47'W 122°46'W 122°45'W 122°44'W 122°43'W 122°42'W 122°41'W 122°40'W 122°39'W



ICP is 6 miles west of Tiller off Hwy 1

Whiskey Complex
 OR-UPF-130132
 8/9/2013 0600

IAP/Transportation Map SOUTH

| | | | |
|--|--------------------------|--|------------------------|
| | Branch Break | | Division Break |
| | Drop Point | | Uncontrolled Fire Edge |
| | Helispot | | Completed Line |
| | Repeater | | Completed Dozer Line |
| | Sling Site | | Hand Line |
| | Staging Area | | Road as Completed Line |
| | Water Source | | Proposed Burnout |
| | Retardant/Mud Pit | | Completed Burnout |
| | Parking | | Proposed Dozer Line |
| | Spot Fire | | Main Roads |
| | RAWS | | Timber Sales |
| | Lookout | | Special Interest |
| | Lightning Strikes Aug. 7 | | |

0 0.5 1 1.5 2 Miles

20130808 2100 hrs NAD83 gg

Roads 6620 & 6610 connect through to Hwy 62