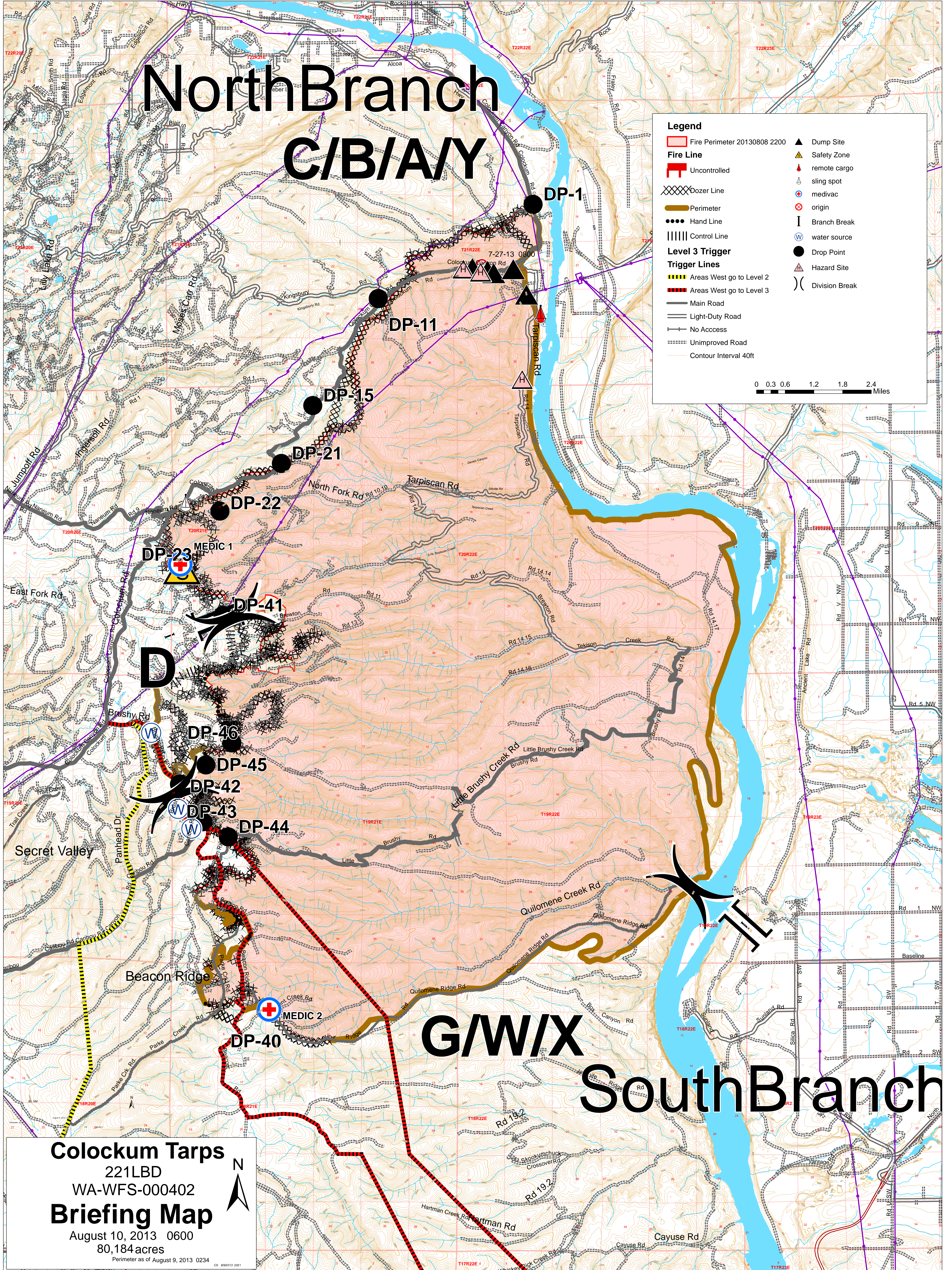


# North Branch C/B/A/Y

**Legend**

Fire Perimeter 20130808 2200	Dump Site
<b>Fire Line</b>	Safety Zone
Uncontrolled	remote cargo
Dozer Line	sling spot
Perimeter	medic
Hand Line	origin
Control Line	Branch Break
<b>Level 3 Trigger</b>	water source
Areas West go to Level 2	Drop Point
Areas West go to Level 3	Hazard Site
Main Road	Division Break
Light-Duty Road	
No Access	
Unimproved Road	
Contour Interval 40ft	

0 0.3 0.6 1.2 1.8 2.4 Miles



**Colockum Tarps**  
 221LBD  
 WA-WFS-000402  
**Briefing Map**  
 August 10, 2013 0600  
 80,184 acres  
 Perimeter as of August 9, 2013 0234

# South Branch