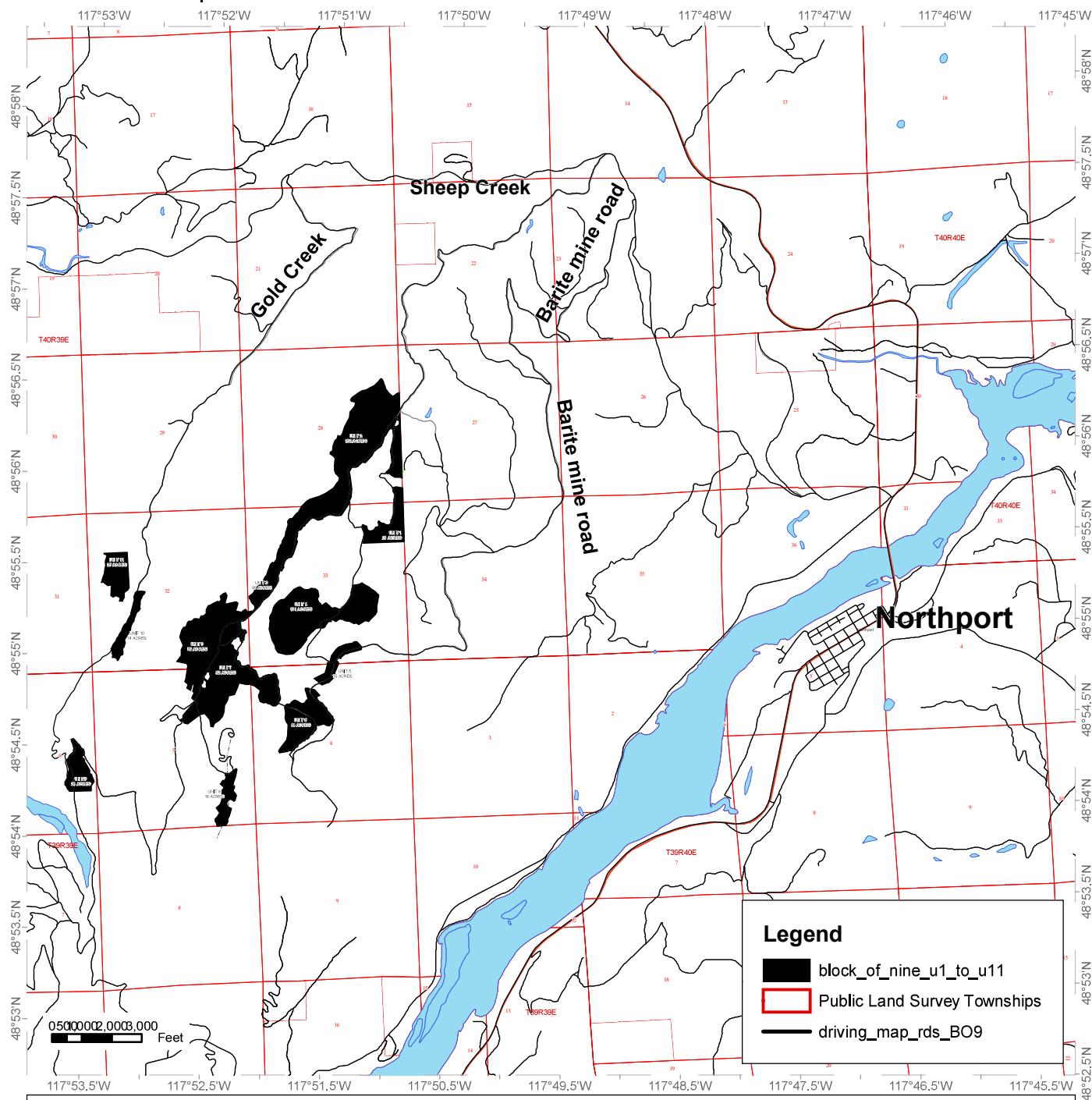


# DRIVING MAP

**SALE NAME:** Block of Nine  
**AGREEMENT #:** 36-097526  
**TOWNSHIP(S):** T40R39E, T39R39E

**REGION:** Northeast Region  
**COUNTY(S):** Stevens



Driving North on HWY 25 continue .7 miles past the town of Northport and turn Left on Sheep Creek RD. Follow Sheep Creek Rd for 3 miles and turn left on Barite Mine RD. Continue up the road for 5.2 miles and this will turn into Forest Service RD 990. Unit 5 starts at 5.5 miles, FS RD 967 that accesses Units 1 and 4 is at 5.7 miles, and Unit 6 starts at 5.9 miles. At 6.6 miles there is a switch back up to FS RD 965. Driving up FS 965 it crosses into Unit 6 at .1 miles with FS 996 going into Unit 6 at .2 miles. Continuing up FS 965 Unit 7 starts at .5 miles and continues until the road comes to a "T" in 1.4 miles at FS RD 960. At this "T" Unit 3 is straight ahead and stretches in both directions. Units 1 & 2, turn right on FS 960. Unit 2 starts at .6 miles. At 1.6 miles FS 967 comes up from the East which provides additional access to Units 1 and 4. Continuing North on FS 960 there is access into Unit 2 at 1.5 miles on FS 969 and at 1.9 miles is FS 980 that accesses more of Unit 2 and additional access to Unit 1. Units 8, 9, 10, and 11, Turn left on FS 960. In .4 miles is FS 950 to the east that runs up to Unit 8 an additional .5 miles. Continuing South on 960 will take you to Unit 9 at 3 miles. At 3.3 miles is Gold Creek road, turn right to access units 10 and 11. Unit 10 starts at 1.1 miles and Unit 11 access is at 1.6 miles. Continuing North on Gold Creek RD it will loop you back down to Sheep Creek RD at 5.1 miles. Turn right on Sheep Creek RD to Barite Mine Rd in 2.5 miles, and HWY 25 in 5.5 miles.

