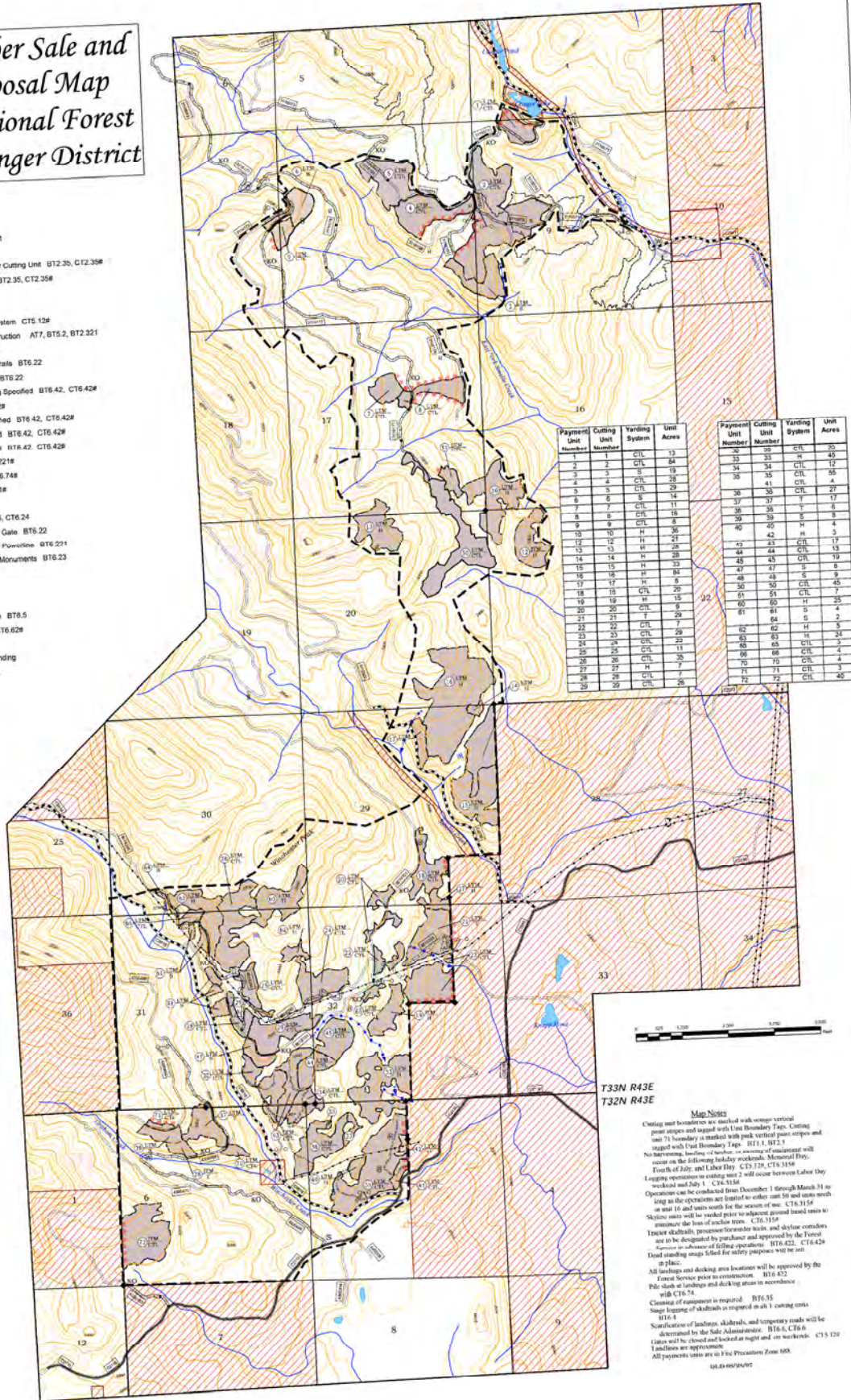


Conger Timber Sale and Slash Disposal Map Colville National Forest Newport Ranger District

Legend

- Sale Area Boundary BT1.1
- ▭ Cutting Unit BT2.3
- ITM Individual Trees Marked for Cutting Unit BT2.35, C12.35#
- LTM Leave Tree Marked Unit BT2.35, C12.35#
- County_Roads Paved
- County_Roads Gravel
- Existing Transportation System C15.12#
- Specified Road - Reconstruction AT7, BT5.2, BT2.321
- Existing Non-system Road
- Protect Improvements - Trails BT6.22
- Roads to be Kept Open BT6.22
- CTL Cut-To-Length Harvesting Specified BT6.42, C16.42#
- Restricted Road C15.12#
- H Helicopter Yarding Specified BT6.42, C16.42#
- S Skyline Yarding Specified BT6.42, C16.42#
- T Tractor Yarding Specified BT6.42, C16.42#
- ▲ Material Source C15.221#
- Machine Fuelbreak C16.74#
- ⊕ Water_Source C15.31#
- ▭ Lakes_ponds
- ATP Area to Protect BT6.25, C16.24
- Protect Improvements - Gate BT6.22
- Protect Improvements - Powerline BT6.221
- ◆ Protect Known Survey Monuments BT6.23
- ▭ Section_lines
- ▭ PVT_Ownership
- Streams
- Protect Stream Course BT6.5
- ▭ Wetland Protection C16.62#
- ⊕ Helicopter_Landing
- ⊕ Helicopter_Service_Landing
- Contour lines, 40 feet



T33N R43E
T32N R43E



Map Notes
Cutting unit boundaries are marked with orange vertical post stakes and topped with Unit Boundary Taps. Cutting unit "I" boundary is marked with pink vertical post stakes and topped with Unit Boundary Taps. BT1.1, BT2.1
No harvesting, loading, or hauling of material will occur on the following holiday weekends: Memorial Day, Fourth of July, and Labor Day. C15.12# (T), C16.31#
Logging operations in cutting unit 2 will occur between Labor Day weekend and July 1. C16.31#
Operations can be conducted from December 1 through March 31 as long as the operations are limited to either cut 50 and units north or unit 10 and units south for the season of use. C16.31#
Skid trails shall be marked prior to adjacent ground based units to minimize the loss of anchor trees. C16.31#
Tractor skid trails, prepared for tractor units, and skidline corridors are to be designated by purchaser and approved by the Forest Service in advance of logging operations. BT6.42, C16.42#
Dead standing snags scheduled for safety purposes will be cut in place.
All landings and decking area locations will be approved by the Forest Service prior to construction. BT6.42
Pile slash at landings and decking areas in accordance with C16.31.
Cleaning of equipment is required. BT6.55
Skid logging of skid trails is required on all 1 cutting units. BT6.6
Sanitization of landings, skid trails, and temporary roads will be determined by the State Administrator. BT6.6, C16.6
Landings are approximate.
All payments made are to First Precut Zone 688.
4813 000/08/07