



Limestone DXP Reoffer Timber Sale Area Map

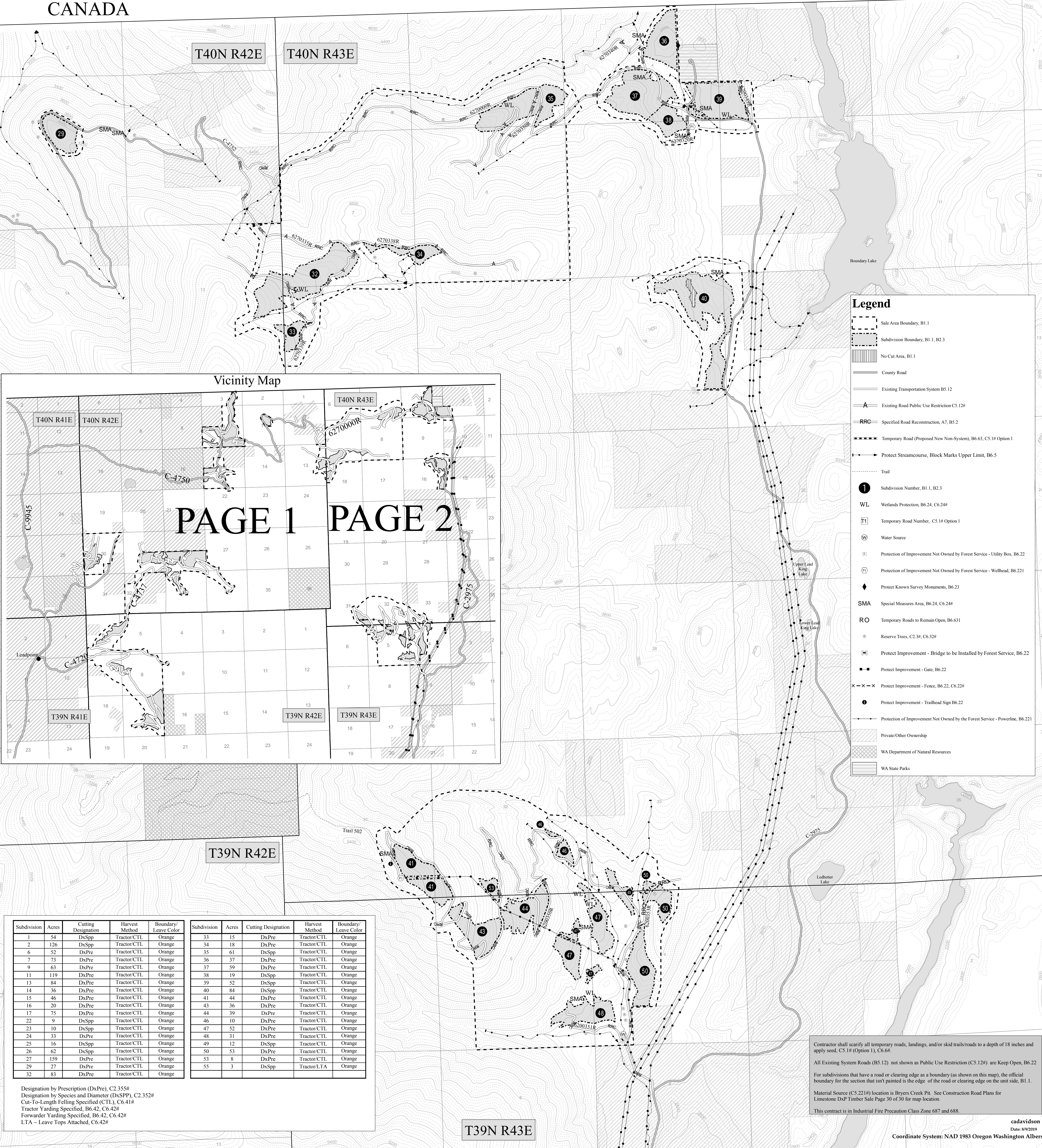
Colville National Forest

Sullivan Lake/Three Rivers Ranger Districts

CANADA

T40N R42E

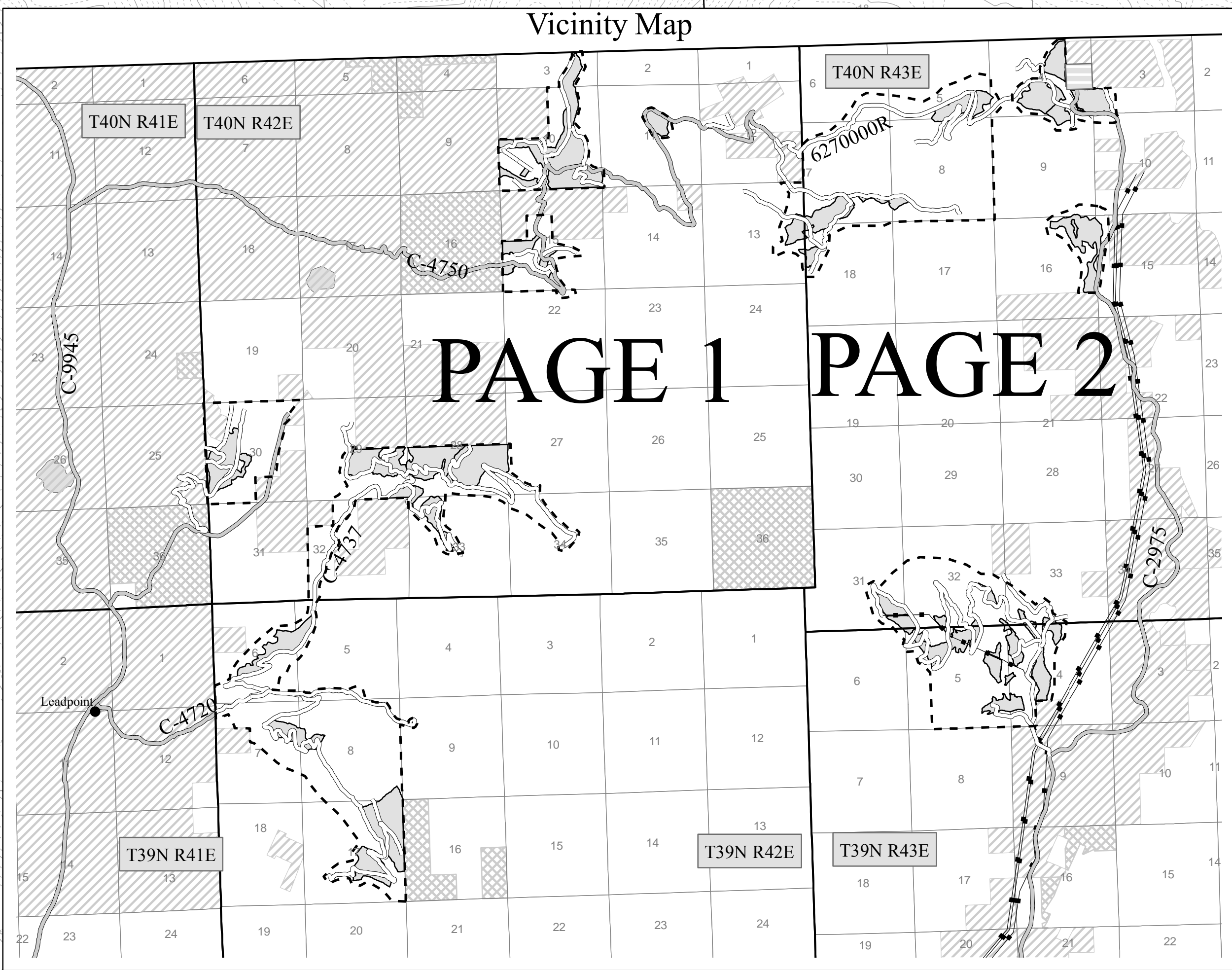
T40N R43E



Legend

- Sale Area Boundary, B1.1
- Subdivision Boundary, B1.1, B2.3
- No Cut Area, B1.1
- County Road
- Existing Transportation System B5.12
- Existing Road Public Use Restriction C5.12#
- Specified Road Reconstruction, A7, B5.2
- Temporary Road (Proposed New Non-System), B6.63, C5.1# Option 1
- Protect Streamcourse, Block Marks Upper Limit, B6.5
- Trail
- Subdivision Number, B1.1, B2.3
- Wetlands Protection, B6.24, C6.24#
- Temporary Road Number, C5.1# Option 1
- Water Source
- Protection of Improvement Not Owned by Forest Service - Utility Box, B6.22
- Protection of Improvement Not Owned by Forest Service - Wellhead, B6.221
- Protect Known Survey Monuments, B6.23
- Special Measures Area, B6.24, C6.24#
- Temporary Roads to Remain Open, B6.631
- Reserve Trees, C2.3#, C6.32#
- Protect Improvement - Bridge to be Installed by Forest Service, B6.22
- Protect Improvement - Gate, B6.22
- Protect Improvement - Fence, B6.22, C6.22#
- Protect Improvement - Trailhead Sign B6.22
- Protection of Improvement Not Owned by the Forest Service - Powerline, B6.221
- Private/Other Ownership
- WA Department of Natural Resources
- WA State Parks

Vicinity Map



PAGE 1 PAGE 2

T39N R42E

Subdivision	Acres	Cutting Designation	Harvest Method	Boundary/Leave Color	Subdivision	Acres	Cutting Designation	Harvest Method	Boundary/Leave Color
1	54	DxSpp	Tractor/CTL	Orange	33	15	DxPre	Tractor/CTL	Orange
2	126	DxSpp	Tractor/CTL	Orange	34	18	DxPre	Tractor/CTL	Orange
6	52	DxPre	Tractor/CTL	Orange	35	61	DxSpp	Tractor/CTL	Orange
7	73	DxPre	Tractor/CTL	Orange	36	37	DxPre	Tractor/CTL	Orange
9	63	DxPre	Tractor/CTL	Orange	37	59	DxPre	Tractor/CTL	Orange
11	119	DxPre	Tractor/CTL	Orange	38	19	DxSpp	Tractor/CTL	Orange
13	84	DxPre	Tractor/CTL	Orange	39	52	DxSpp	Tractor/CTL	Orange
14	36	DxPre	Tractor/CTL	Orange	40	84	DxSpp	Tractor/CTL	Orange
15	46	DxPre	Tractor/CTL	Orange	41	44	DxPre	Tractor/CTL	Orange
16	20	DxPre	Tractor/CTL	Orange	43	36	DxPre	Tractor/CTL	Orange
17	75	DxPre	Tractor/CTL	Orange	44	39	DxPre	Tractor/CTL	Orange
22	9	DxSpp	Tractor/CTL	Orange	46	10	DxPre	Tractor/CTL	Orange
23	10	DxSpp	Tractor/CTL	Orange	47	52	DxPre	Tractor/CTL	Orange
24	33	DxPre	Tractor/CTL	Orange	48	31	DxPre	Tractor/CTL	Orange
25	16	DxSpp	Tractor/CTL	Orange	49	12	DxSpp	Tractor/CTL	Orange
26	62	DxSpp	Tractor/CTL	Orange	50	53	DxPre	Tractor/CTL	Orange
27	159	DxPre	Tractor/CTL	Orange	53	8	DxPre	Tractor/CTL	Orange
29	27	DxPre	Tractor/CTL	Orange	55	3	DxSpp	Tractor/LTA	Orange
32	83	DxPre	Tractor/CTL	Orange					

Designation by Prescription (DxPre), C2.355#
 Designation by Species and Diameter (DxSPP), C2.352#
 Cut-To-Length Felling Specified (CTL), C6.41#
 Tractor Yarding Specified, B6.42, C6.42#
 Forwarder Yarding Specified, B6.42, C6.42#
 LTA - Leave Tops Attached, C6.42#

Contractor shall scarify all temporary roads, landings, and/or skid trails/roads to a depth of 18 inches and apply seed, C5.1# (Option 1), C6.6#
 All Existing System Roads (B5.12) not shown as Public Use Restriction (C5.12#) are Keep Open, B6.22
 For subdivisions that have a road or clearing edge as a boundary (as shown on this map), the official boundary for the section that isn't painted is the edge of the road or clearing edge on the unit side, B1.1.
 Material Source (C5.221#) location is Bryers Creek Pit. See Construction Road Plans for Limestone DXP Timber Sale Page 30 of 30 for map location.
 This contract is in Industrial Fire Precaution Class Zone 687 and 688.

T39N R43E