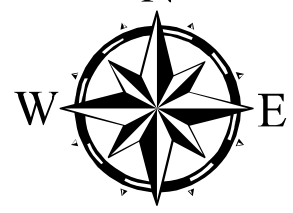


Lost Creek Stewardship Contract Area Map Sullivan Lake Ranger District, Colville National Forest



1:12,000

Subdivision	Acres	Cutting Designation	Subdivision	Acres	Cutting Designation
5	60	DxPre	32	134	LTM
8	14	DxSpp	34	6	DxSpp
9	42	DxPre	35	33	DxPre
11	84	DxPre	36	35	DxSpp
12	5	DxSpp	39	106	LTM
15	9	DxSpp	40	25	LTM
16	114	DxPre	42	13	DxSpp
17	105	DxPre	43	22	LTM
20	22	DxSpp	44	49	DxSpp
22	87	LTM	45	115	LTM
23	46	DxPre	47	79	LTM
24	124	DxPre	49	14	DxPre
25	8	DxSpp	50	8	DxSpp
26	116	LTM	51	43	DxSpp w/ITM
27	41	DxSpp	53	7	DxSpp
28	107	LTM	68	11	DxSpp
29	39	DxSpp	99	11	ITM
30	68	DxSpp	510	4	DxSpp
31	71	LTM			

Leave Tree Mark (LTM), K-C.3.5.7#
 Designation by Prescription (DxPre), K-C.3.5.5#
 Designation by Species and Diameter (DxSpp), K-C.3.5.2#
 Individual Tree Marked (ITM), K-C.3.5.7#

Legend

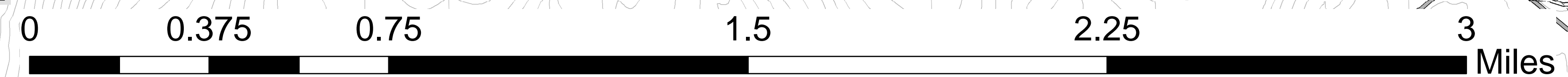
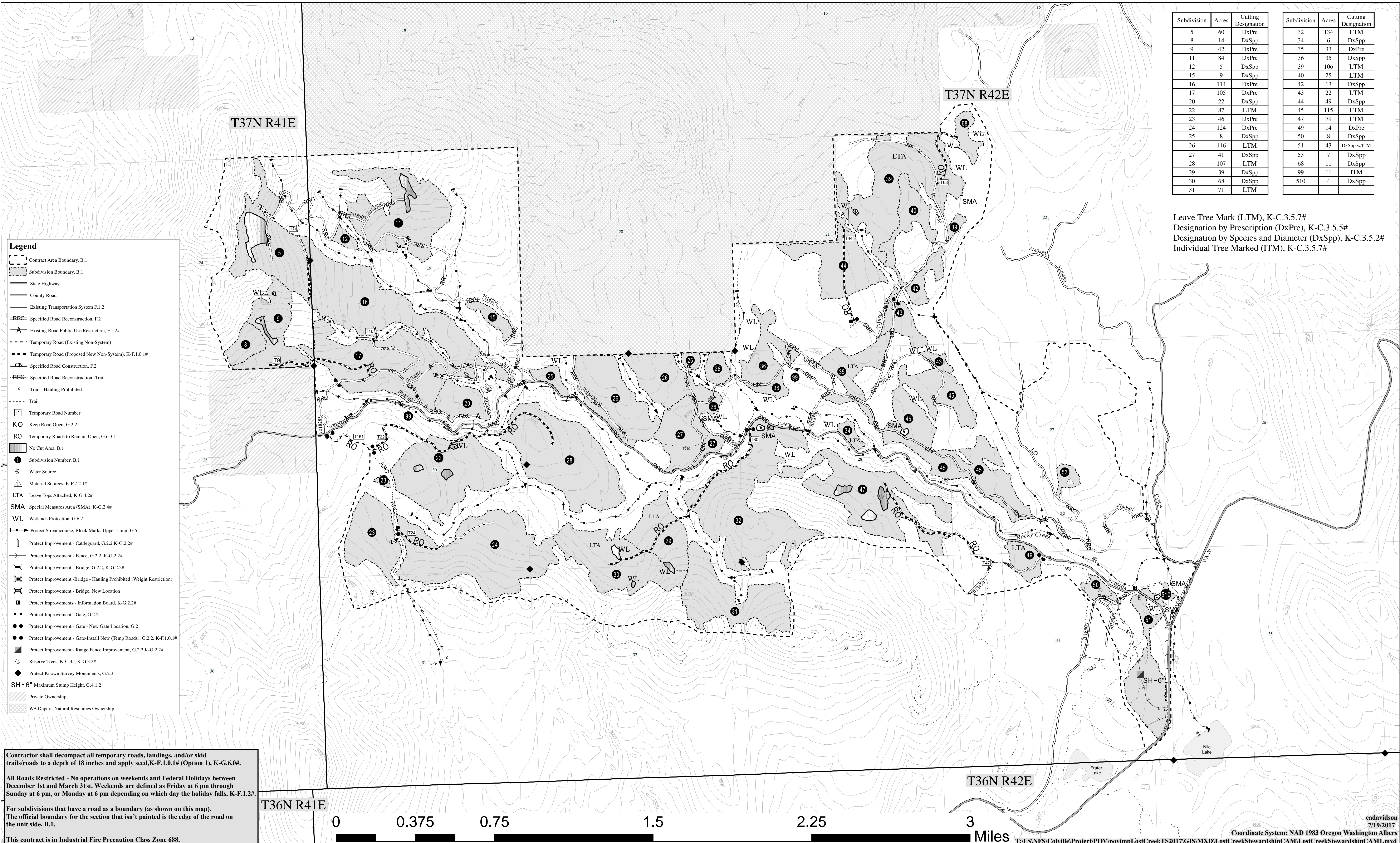
- Contract Area Boundary, B.1
- Subdivision Boundary, B.1
- State Highway
- County Road
- Existing Transportation System F.1.2
- RRC- Specified Road Reconstruction, F.2
- Existing Road Public Use Restriction, F.1.2#
- Temporary Road (Existing Non-System)
- Temporary Road (Proposed New Non-System), K-F.1.0.1#
- Specified Road Construction, F.2
- RRC- Specified Road Reconstruction - Trail
- Trail - Hauling Prohibited
- Trail
- T1 Temporary Road Number
- KO Keep Road Open, G.2.2
- RO Temporary Roads to Remain Open, G.6.3.1
- No Cut Area, B.1
- Subdivision Number, B.1
- Water Source
- Material Sources, K-F.2.2.1#
- LTA Leave Tops Attached, K-G.4.2#
- SMA Special Measures Area (SMA), K-G.2.4#
- WL Wetlands Protection, G.6.2
- Protect Streamcourse, Block Marks Upper Limit, G.5
- Protect Improvement - Cattleguard, G.2.2.K-G.2.2#
- Protect Improvement - Fence, G.2.2, K-G.2.2#
- Protect Improvement - Bridge, G.2.2, K-G.2.2#
- Protect Improvement - Bridge - Hauling Prohibited (Weight Restriction)
- Protect Improvement - Bridge, New Location
- Protect Improvements - Information Board, K-G.2.2#
- Protect Improvement - Gate, G.2.2
- Protect Improvement - Gate - New Gate Location, G.2
- Protect Improvement - Gate-Install New (Temp Roads), G.2.2, K-F.1.0.1#
- Protect Improvement - Range Fence Improvement, G.2.2.K-G.2.2#
- Reserve Trees, K-C.3#, K-G.3.2#
- Protect Known Survey Monuments, G.2.3
- SH - 6" Maximum Stump Height, G.4.1.2
- Private Ownership
- WA Dept of Natural Resources Ownership

Contractor shall decompact all temporary roads, landings, and/or skid trails/roads to a depth of 18 inches and apply seed, K-F.1.0.1# (Option 1), K-G.6.0#.

All Roads Restricted - No operations on weekends and Federal Holidays between December 1st and March 31st. Weekends are defined as Friday at 6 pm through Sunday at 6 pm, or Monday at 6 pm depending on which day the holiday falls, K-F.1.2#.

For subdivisions that have a road as a boundary (as shown on this map). The official boundary for the section that isn't painted is the edge of the road on the unit side, B.1.

This contract is in Industrial Fire Precaution Class Zone 688.



cadavidson
7/19/2017
Coordinate System: NAD 1983 Oregon Washington Albers
T:\FS\NFS\Colville\Project\POV\pov\pml\LostCreek\TS2017\GIS\MXD\LostCreekStewardship\CAM\LostCreekStewardshipCAM1.mxd