

Rankin DXP Timber Sale Area Map

Newport Ranger District, Colville National Forest

Purchaser shall scarify all temporary roads, landings, and/or skid trails/roads to a depth of 18 inches and apply seed, C5.1# (Option 1), C6.6#.

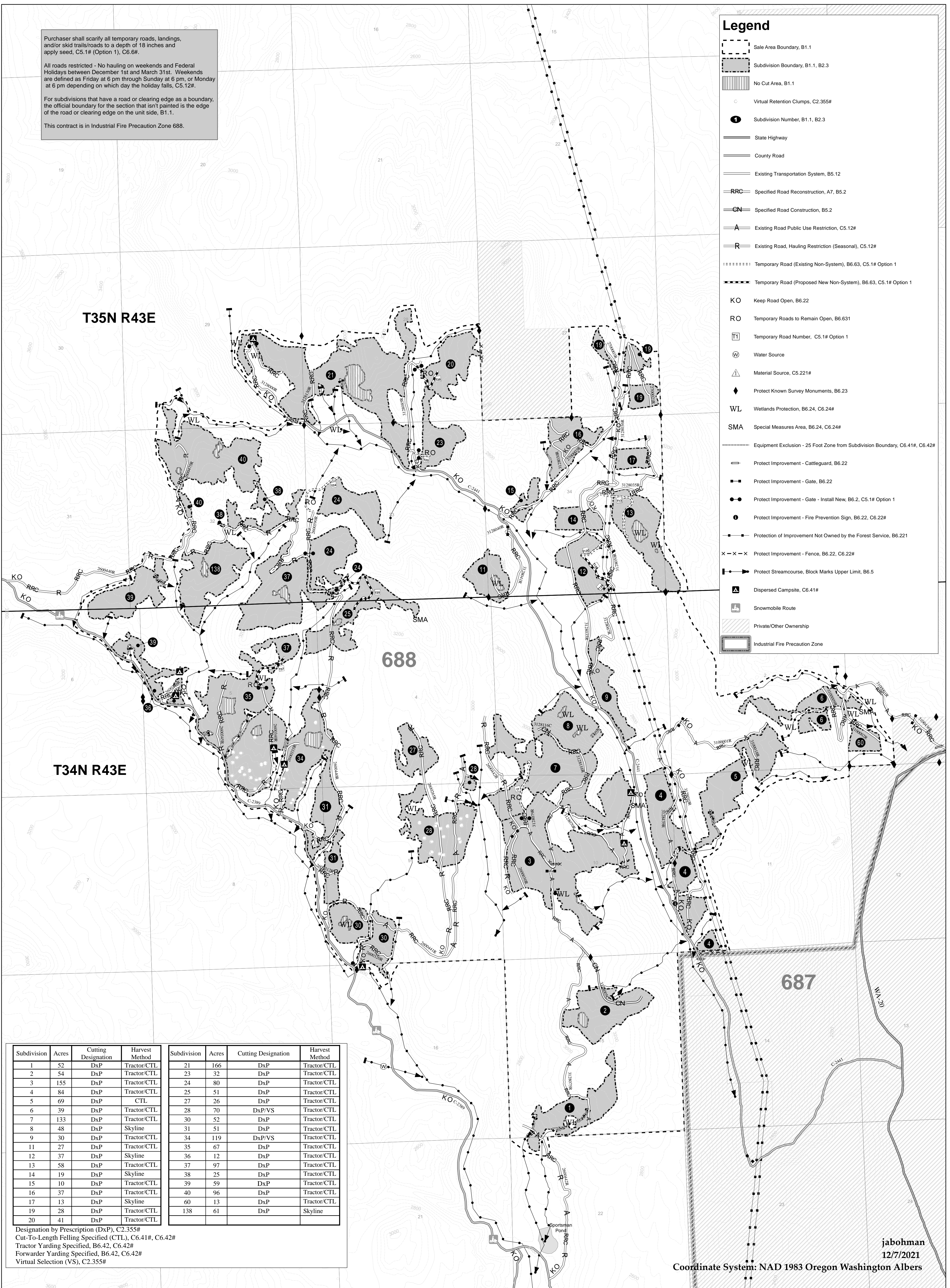
All roads restricted - No hauling on weekends and Federal Holidays between December 1st and March 31st. Weekends are defined as Friday at 6 pm through Sunday at 6 pm, or Monday at 6 pm depending on which day the holiday falls, C5.12#.

For subdivisions that have a road or clearing edge as a boundary, the official boundary for the section that isn't painted is the edge of the road or clearing edge on the unit side, B1.1.

This contract is in Industrial Fire Precaution Zone 688.

Legend

- Sale Area Boundary, B1.1
- Subdivision Boundary, B1.1, B2.3
- No Cut Area, B1.1
- Virtual Retention Clumps, C2.355#
- Subdivision Number, B1.1, B2.3
- State Highway
- County Road
- Existing Transportation System, B5.12
- Specified Road Reconstruction, A7, B5.2
- Specified Road Construction, B5.2
- Existing Road Public Use Restriction, C5.12#
- Existing Road, Hauling Restriction (Seasonal), C5.12#
- Temporary Road (Existing Non-System), B6.63, C5.1# Option 1
- Temporary Road (Proposed New Non-System), B6.63, C5.1# Option 1
- Keep Road Open, B6.22
- Temporary Roads to Remain Open, B6.631
- Temporary Road Number, C5.1# Option 1
- Water Source
- Material Source, C5.221#
- Protect Known Survey Monuments, B6.23
- Wetlands Protection, B6.24, C6.24#
- Special Measures Area, B6.24, C6.24#
- Equipment Exclusion - 25 Foot Zone from Subdivision Boundary, C6.41#, C6.42#
- Protect Improvement - Cattleguard, B6.22
- Protect Improvement - Gate, B6.22
- Protect Improvement - Gate - Install New, B6.2, C5.1# Option 1
- Protect Improvement - Fire Prevention Sign, B6.22, C6.22#
- Protection of Improvement Not Owned by the Forest Service, B6.221
- Protect Improvement - Fence, B6.22, C6.22#
- Protect Streamcourse, Block Marks Upper Limit, B6.5
- Dispersed Campsite, C6.41#
- Snowmobile Route
- Private/Other Ownership
- Industrial Fire Precaution Zone



Subdivision	Acres	Cutting Designation	Harvest Method	Subdivision	Acres	Cutting Designation	Harvest Method
1	52	DxP	Tractor/CTL	21	166	DxP	Tractor/CTL
2	54	DxP	Tractor/CTL	23	32	DxP	Tractor/CTL
3	155	DxP	Tractor/CTL	24	80	DxP	Tractor/CTL
4	84	DxP	Tractor/CTL	25	51	DxP	Tractor/CTL
5	69	DxP	CTL	27	26	DxP	Tractor/CTL
6	39	DxP	Tractor/CTL	28	70	DxP/VS	Tractor/CTL
7	133	DxP	Tractor/CTL	30	52	DxP	Tractor/CTL
8	48	DxP	Skyline	31	51	DxP	Tractor/CTL
9	30	DxP	Tractor/CTL	34	119	DxP/VS	Tractor/CTL
11	27	DxP	Tractor/CTL	35	67	DxP	Tractor/CTL
12	37	DxP	Skyline	36	12	DxP	Tractor/CTL
13	58	DxP	Tractor/CTL	37	97	DxP	Tractor/CTL
14	19	DxP	Skyline	38	25	DxP	Tractor/CTL
15	10	DxP	Tractor/CTL	39	59	DxP	Tractor/CTL
16	37	DxP	Tractor/CTL	40	96	DxP	Tractor/CTL
17	13	DxP	Skyline	60	13	DxP	Tractor/CTL
19	28	DxP	Tractor/CTL	138	61	DxP	Skyline
20	41	DxP	Tractor/CTL				

Designation by Prescription (DxP), C2.355#
 Cut-To-Length Felling Specified (CTL), C6.41#, C6.42#
 Tractor Yarding Specified, B6.42, C6.42#
 Forwarder Yarding Specified, B6.42, C6.42#
 Virtual Selection (VS), C2.355#