



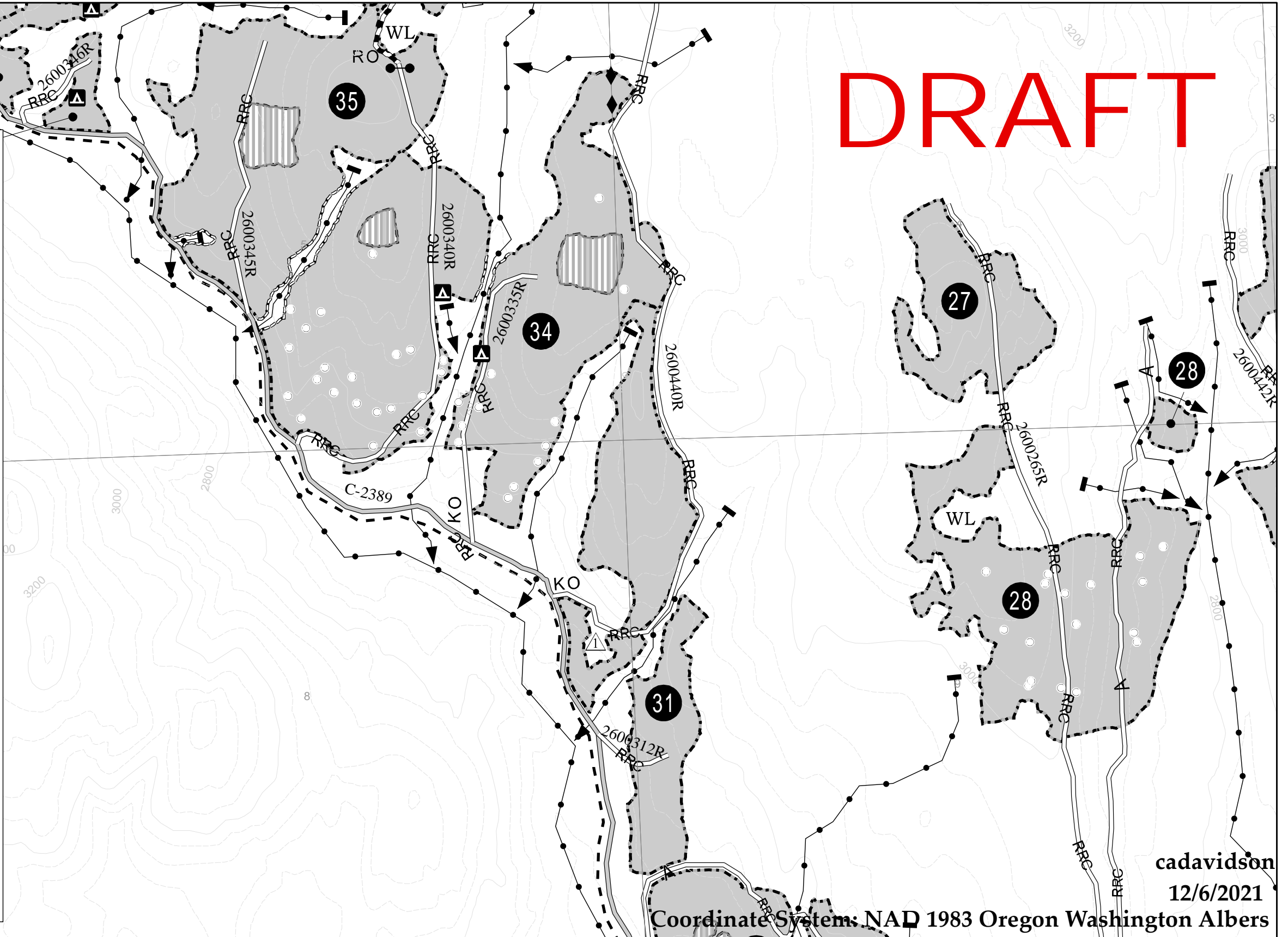
Rankin DXP Timber Sale Area Map

Newport Ranger District, Colville National Forest

DRAFT

Legend

- Sale Area Boundary, B1.1
- Subdivision Boundary, B1.1, B2.3
- No Cut Area, B1.1
- Retention Clumps, C2.355#
- Subdivision Number, B1.1, B2.3
- State Highway
- County Road
- Existing Transportation System, B5.12
- Specified Road Reconstruction, A7, B5.2
- Specified Road Construction, B5.2
- Temporary Road (Existing Non-System), B6.63, C5.1# Option 1
- Temporary Road (Proposed New Non-System), B6.63, C5.1# Option 1
- Keep Road Open, B6.22
- Temporary Roads to Remain Open, B6.631
- Temporary Road Number, C5.1# Option 1
- Material Source, C5.221#
- Protect Known Survey Monuments, B6.23
- Equipment Exclusion - 25 Foot Zone from Subdivision Boundary, C6.41#, C6.42#
- Wetlands Protection, B6.24, C6.24#
- Special Measures Area, B6.24, C6.24#
- Protect Improvement - Cattleguard, B6.22
- Protect Improvement - Gate, B6.22
- Protect Improvement - Gate - Install New, B6.2, C5.1# Option 1
- Protect Improvement - Fence, B6.22, C6.22#
- Protect Streamcourse, Block Marks Upper Limit, B6.5
- Dispersed Campsite, C6.41#



cadavidson
 12/6/2021
 Coordinate Systems: NAD 1983 Oregon Washington Albers