



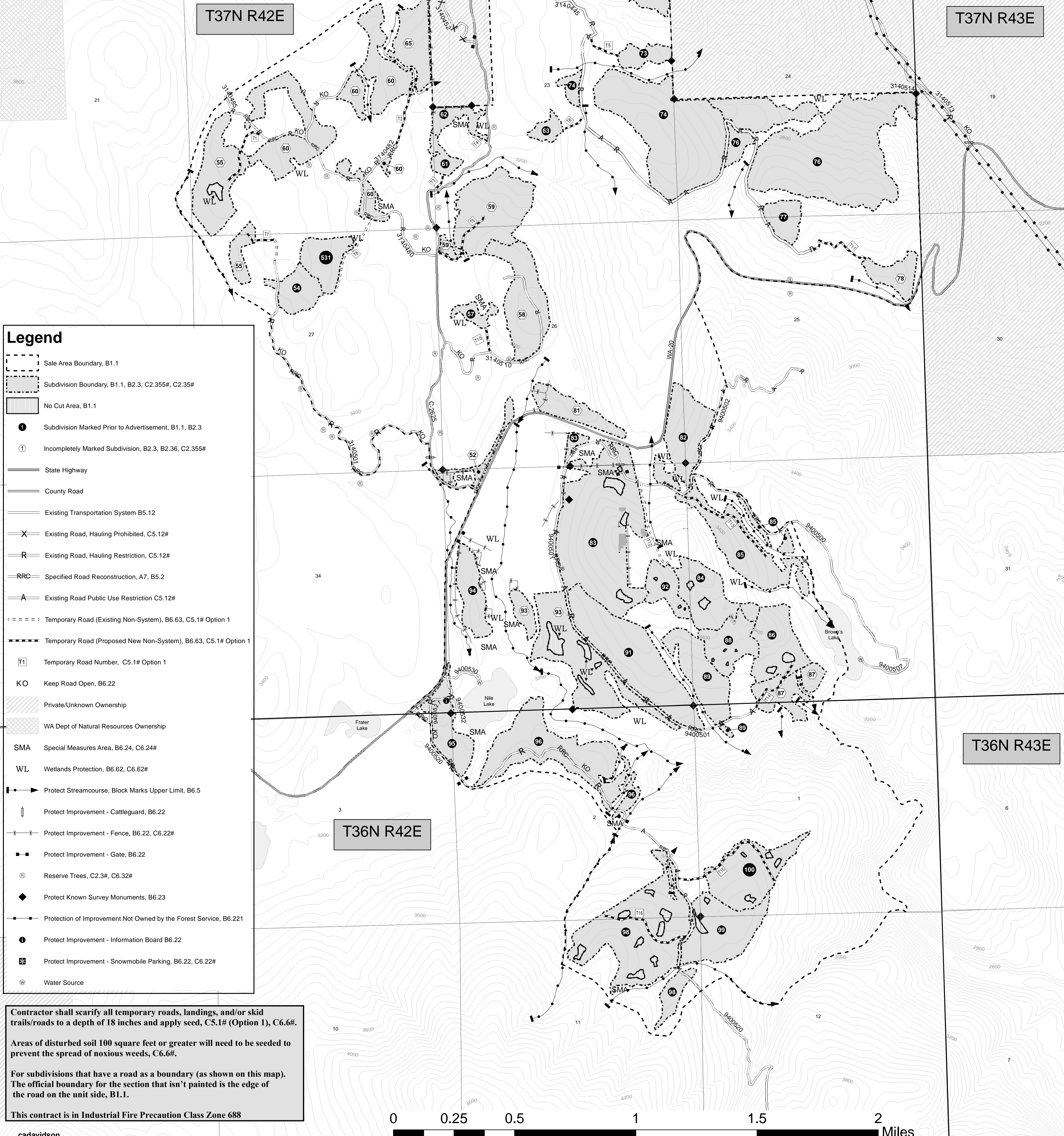
Renshaw DxP Timber Sale Area Map

Sullivan Lake Ranger District, Colville National Forest

Subdivision	Acres	Cutting Designation	Harvest Method
52	9	DxSPP with ITM	CTL
54	18	LTM	Tractor/CTL
55	49	DxPre	Tractor/CTL
57	6	LTM	Tractor/CTL
58	43	DxPre	Tractor/CTL
59	55	DxPre	Tractor/CTL
60	90	DxPre	Tractor/CTL
61	7	LTM	Tractor - LTA
62	10	LTM	Tractor - LTA
63	6	LTM	Tractor/CTL
65	29	DxPre	Tractor/CTL
66	23	DxPre	Tractor/CTL
70	50	LTM	Tractor/CTL
73	10	LTM	Tractor/CTL
74	108	LTM	Tractor/CTL
76	158	LTM	Tractor/CTL
77	13	LTM	Tractor/CTL
78	15	DxSPP with ITM	Tractor/CTL
80	23	DxPre	Tractor - LTA

Subdivision	Acres	Cutting Designation	Harvest Method
81	19	DxSPP with ITM	Tractor/CTL
82	37	LTM	Tractor/CTL
83	117	LTM	Tractor/CTL
84	32	LTM	Tractor/CTL
85	50	LTM	Tractor/CTL
86	31	LTM	Tractor - LTA
87	22	DxPre	Tractor/CTL
88	24	LTM	Tractor/CTL
89	33	LTM	Tractor/CTL
91	74	LTM	Tractor - LTA
92	15	LTM	Tractor/CTL
93	65	DxPre with LTM	Tractor - LTA
94	21	LTM	Tractor - LTA
95	26	LTM	Tractor - LTA
96	69	LTM	Tractor - LTA
98	93	LTM	Tractor - LTA
99	42	LTM	Tractor - LTA
100	43	LTM	Tractor - LTA
531	21	LTM	Tractor/CTL

Cut-To-Length Felling Specified (CTL), C6.41#
 Leave Tree Mark (LTM), B2.35, C2.35# (Option 1).
 Individual Tree Mark (ITM), C2.35#
 Designation by Prescription (DxPre), C2.355#
 Designation by Species and Diameter (DxSPP), C2.352#
 Tractor Yarding Specified, B6.42, C6.42#
 Forwarder Yarding Specified, B6.42, C6.42#
 Leave Tops Attached (LTA) C6.42#



Legend

- Sale Area Boundary, B1.1
- Subdivision Boundary, B1.1, B2.3, C2.355#, C2.35#
- No Cut Area, B1.1
- Subdivision Marked Prior to Advertisement, B1.1, B2.3
- Incompletely Marked Subdivision, B2.3, B2.36, C2.355#
- State Highway
- County Road
- Existing Transportation System B5.12
- Existing Road, Hauling Prohibited, C5.12#
- Existing Road, Hauling Restriction, C5.12#
- Specified Road Reconstruction, A7, B5.2
- Existing Road Public Use Restriction C5.12#
- Temporary Road (Existing Non-System), B6.63, C5.1# Option 1
- Temporary Road (Proposed New Non-System), B6.63, C5.1# Option 1
- Temporary Road Number, C5.1# Option 1
- Keep Road Open, B6.22
- Private/Unknown Ownership
- WA Dept of Natural Resources Ownership
- SMA Special Measures Area, B6.24, C6.24#
- WL Wetlands Protection, B6.62, C6.62#
- Protect Streamcourse, Block Marks Upper Limit, B6.5
- Protect Improvement - Cattleguard, B6.22
- Protect Improvement - Fence, B6.22, C6.22#
- Protect Improvement - Gate, B6.22
- Reserve Trees, C2.3#, C6.32#
- Protect Known Survey Monuments, B6.23
- Protection of Improvement Not Owned by the Forest Service, B6.221
- Protect Improvement - Information Board B6.22
- Protect Improvement - Snowmobile Parking, B6.22, C6.22#
- Water Source

Contractor shall scarify all temporary roads, landings, and/or skid trails/roads to a depth of 18 inches and apply seed, C5.1# (Option 1), C6.6#.

Areas of disturbed soil 100 square feet or greater will need to be seeded to prevent the spread of noxious weeds, C6.6#.

For subdivisions that have a road as a boundary (as shown on this map). The official boundary for the section that isn't painted is the edge of the road on the unit side, B1.1.

This contract is in Industrial Fire Precaution Class Zone 688

