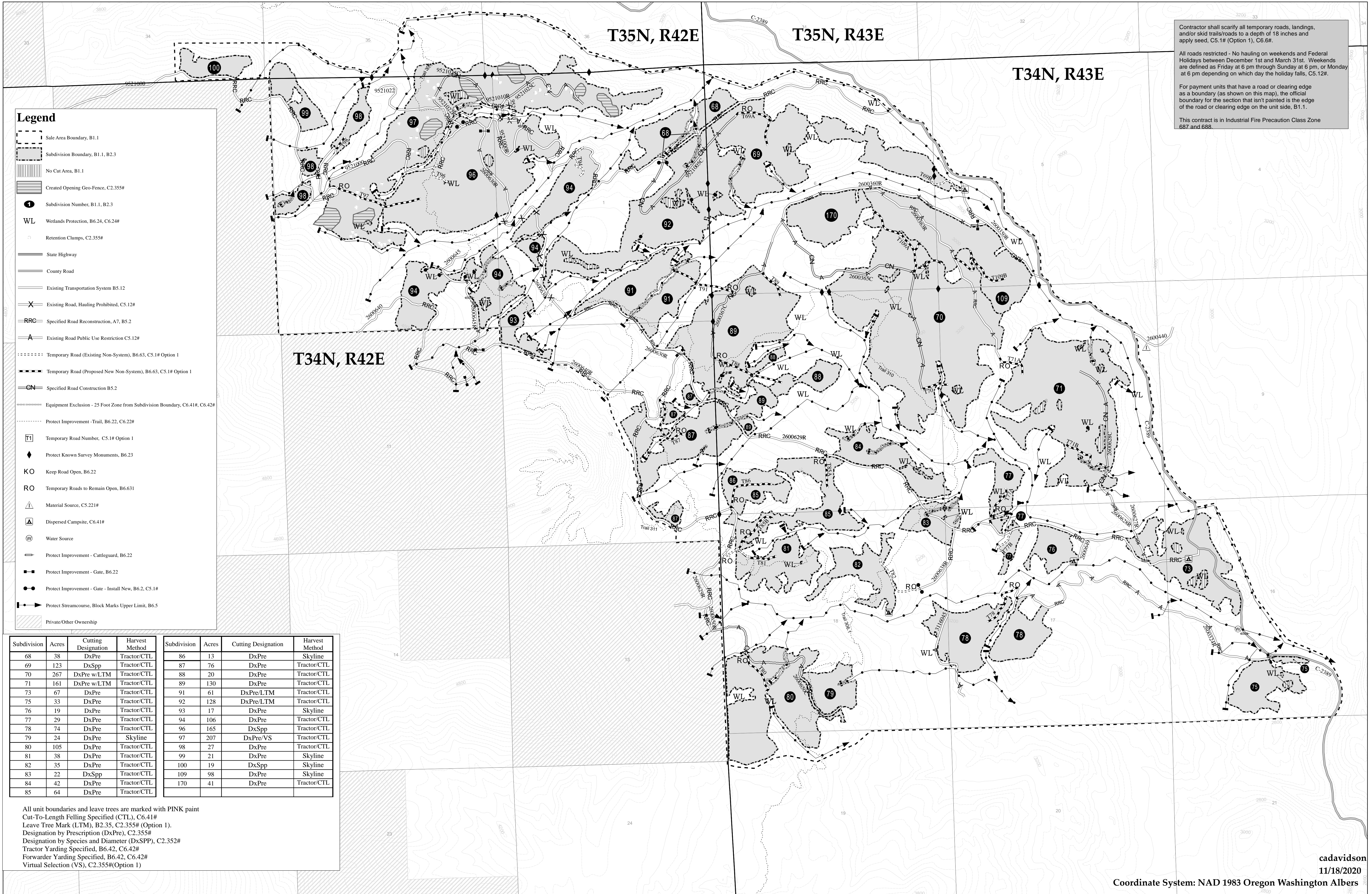
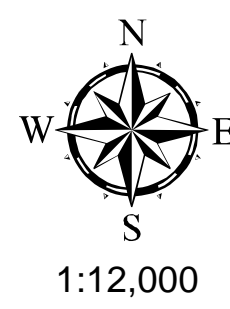


# Swamp Creek DXP Timber Sale Newport Ranger District, Colville National Forest



- Legend**
- Sale Area Boundary, B1.1
  - Subdivision Boundary, B1.1, B2.3
  - No Cut Area, B1.1
  - Created Opening Geo-Fence, C2.355#
  - 1 Subdivision Number, B1.1, B2.3
  - WL** Wetlands Protection, B6.24, C6.24#
  - Retention Clumps, C2.355#
  - State Highway
  - County Road
  - Existing Transportation System B5.12
  - X Existing Road, Hauling Prohibited, C5.12#
  - RRC Specified Road Reconstruction, A7, B5.2
  - A Existing Road Public Use Restriction C5.12#
  - Temporary Road (Existing Non-System), B6.63, C5.1# Option 1
  - Temporary Road (Proposed New Non-System), B6.63, C5.1# Option 1
  - GN Specified Road Construction B5.2
  - Equipment Exclusion - 25 Foot Zone from Subdivision Boundary, C6.41#, C6.42#
  - Protect Improvement - Trail, B6.22, C6.22#
  - T1 Temporary Road Number, C5.1# Option 1
  - ◆ Protect Known Survey Monuments, B6.23
  - KO** Keep Road Open, B6.22
  - RO** Temporary Roads to Remain Open, B6.631
  - ▲ Material Source, C5.221#
  - ▲ Dispersed Campsite, C6.41#
  - W Water Source
  - Protect Improvement - Cattleguard, B6.22
  - Protect Improvement - Gate, B6.22
  - Protect Improvement - Gate - Install New, B6.2, C5.1#
  - Protect Streamcourse, Block Marks Upper Limit, B6.5
  - Private/Other Ownership

Contractor shall scarify all temporary roads, landings, and/or skid trails/roads to a depth of 18 inches and apply seed, C5.1# (Option 1), C6.6#.

All roads restricted - No hauling on weekends and Federal Holidays between December 1st and March 31st. Weekends are defined as Friday at 6 pm through Sunday at 6 pm, or Monday at 6 pm depending on which day the holiday falls, C5.12#.

For payment units that have a road or clearing edge as a boundary (as shown on this map), the official boundary for the section that isn't painted is the edge of the road or clearing edge on the unit side, B1.1.

This contract is in Industrial Fire Precaution Class Zone 687 and 688.

Subdivision	Acres	Cutting Designation	Harvest Method	Subdivision	Acres	Cutting Designation	Harvest Method
68	38	DxPre	Tractor/CTL	86	13	DxPre	Skyline
69	123	DxSpp	Tractor/CTL	87	76	DxPre	Tractor/CTL
70	267	DxPre w/LTM	Tractor/CTL	88	20	DxPre	Tractor/CTL
71	161	DxPre w/LTM	Tractor/CTL	89	130	DxPre	Tractor/CTL
73	67	DxPre	Tractor/CTL	91	61	DxPre/LTM	Tractor/CTL
75	33	DxPre	Tractor/CTL	92	128	DxPre/LTM	Tractor/CTL
76	19	DxPre	Tractor/CTL	93	17	DxPre	Skyline
77	29	DxPre	Tractor/CTL	94	106	DxPre	Tractor/CTL
78	74	DxPre	Tractor/CTL	96	165	DxSpp	Tractor/CTL
79	24	DxPre	Skyline	97	207	DxPre/VS	Tractor/CTL
80	105	DxPre	Tractor/CTL	98	27	DxPre	Tractor/CTL
81	38	DxPre	Tractor/CTL	99	21	DxPre	Skyline
82	35	DxPre	Tractor/CTL	100	19	DxSpp	Skyline
83	22	DxSpp	Tractor/CTL	109	98	DxPre	Skyline
84	42	DxPre	Tractor/CTL	170	41	DxPre	Tractor/CTL
85	64	DxPre	Tractor/CTL				

All unit boundaries and leave trees are marked with PINK paint  
 Cut-To-Length Felling Specified (CTL), C6.41#  
 Leave Tree Mark (LTM), B2.35, C2.355# (Option 1).  
 Designation by Prescription (DxPre), C2.355#  
 Designation by Species and Diameter (DxSPP), C2.352#  
 Tractor Yarding Specified, B6.42, C6.42#  
 Forwarder Yarding Specified, B6.42, C6.42#  
 Virtual Selection (VS), C2.355#(Option 1)