



# Timber Mountain DXP Timber Sale Area Map

## Newport Ranger District, Colville National Forest

### Legend

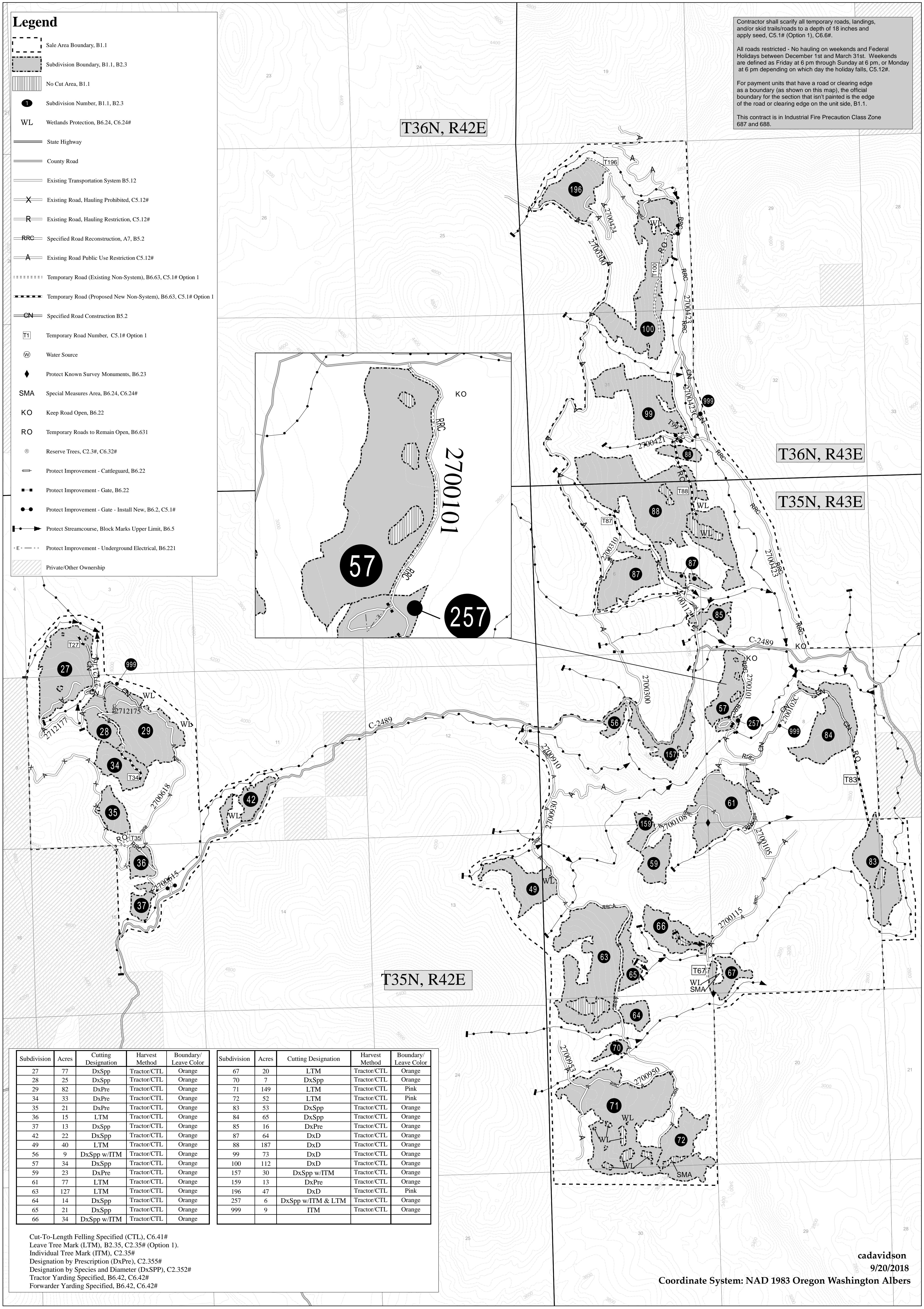
- Sale Area Boundary, B1.1
- Subdivision Boundary, B1.1, B2.3
- No Cut Area, B1.1
- Subdivision Number, B1.1, B2.3
- WL** Wetlands Protection, B6.24, C6.24#
- State Highway
- County Road
- Existing Transportation System B5.12
- Existing Road, Hauling Prohibited, C5.12#
- Existing Road, Hauling Restriction, C5.12#
- Specified Road Reconstruction, A7, B5.2
- Existing Road Public Use Restriction C5.12#
- Temporary Road (Existing Non-System), B6.63, C5.1# Option 1
- Temporary Road (Proposed New Non-System), B6.63, C5.1# Option 1
- Specified Road Construction B5.2
- Temporary Road Number, C5.1# Option 1
- Water Source
- Protect Known Survey Monuments, B6.23
- SMA** Special Measures Area, B6.24, C6.24#
- KO** Keep Road Open, B6.22
- RO** Temporary Roads to Remain Open, B6.631
- Reserve Trees, C2.3#, C6.32#
- Protect Improvement - Cattleguard, B6.22
- Protect Improvement - Gate, B6.22
- Protect Improvement - Gate - Install New, B6.2, C5.1#
- Protect Streamcourse, Block Marks Upper Limit, B6.5
- Protect Improvement - Underground Electrical, B6.221
- Private/Other Ownership

Contractor shall scarify all temporary roads, landings, and/or skid trails/roads to a depth of 18 inches and apply seed, C5.1# (Option 1), C6.6#.

All roads restricted - No hauling on weekends and Federal Holidays between December 1st and March 31st. Weekends are defined as Friday at 6 pm through Sunday at 6 pm, or Monday at 6 pm depending on which day the holiday falls, C5.12#.

For payment units that have a road or clearing edge as a boundary (as shown on this map), the official boundary for the section that isn't painted is the edge of the road or clearing edge on the unit side, B1.1.

This contract is in Industrial Fire Precaution Class Zone 687 and 688.



| Subdivision | Acres | Cutting Designation | Harvest Method | Boundary/Leave Color | Subdivision | Acres | Cutting Designation | Harvest Method | Boundary/Leave Color |
|-------------|-------|---------------------|----------------|----------------------|-------------|-------|---------------------|----------------|----------------------|
| 27          | 77    | DxSpp               | Tractor/CTL    | Orange               | 67          | 20    | LTM                 | Tractor/CTL    | Orange               |
| 28          | 25    | DxSpp               | Tractor/CTL    | Orange               | 70          | 7     | DxSpp               | Tractor/CTL    | Orange               |
| 29          | 82    | DxPre               | Tractor/CTL    | Orange               | 71          | 149   | LTM                 | Tractor/CTL    | Pink                 |
| 34          | 33    | DxPre               | Tractor/CTL    | Orange               | 72          | 52    | LTM                 | Tractor/CTL    | Pink                 |
| 35          | 21    | DxPre               | Tractor/CTL    | Orange               | 83          | 53    | DxSpp               | Tractor/CTL    | Orange               |
| 36          | 15    | LTM                 | Tractor/CTL    | Orange               | 84          | 65    | DxSpp               | Tractor/CTL    | Orange               |
| 37          | 13    | DxSpp               | Tractor/CTL    | Orange               | 85          | 16    | DxPre               | Tractor/CTL    | Orange               |
| 42          | 22    | DxSpp               | Tractor/CTL    | Orange               | 87          | 64    | DxD                 | Tractor/CTL    | Orange               |
| 49          | 40    | LTM                 | Tractor/CTL    | Orange               | 88          | 187   | DxD                 | Tractor/CTL    | Orange               |
| 56          | 9     | DxSpp w/ITM         | Tractor/CTL    | Orange               | 99          | 73    | DxD                 | Tractor/CTL    | Orange               |
| 57          | 34    | DxSpp               | Tractor/CTL    | Orange               | 100         | 112   | DxD                 | Tractor/CTL    | Orange               |
| 59          | 23    | DxPre               | Tractor/CTL    | Orange               | 157         | 30    | DxSpp w/ITM         | Tractor/CTL    | Orange               |
| 61          | 77    | LTM                 | Tractor/CTL    | Orange               | 159         | 13    | DxPre               | Tractor/CTL    | Orange               |
| 63          | 127   | LTM                 | Tractor/CTL    | Orange               | 196         | 47    | DxD                 | Tractor/CTL    | Pink                 |
| 64          | 14    | DxSpp               | Tractor/CTL    | Orange               | 257         | 6     | DxSpp w/ITM & LTM   | Tractor/CTL    | Orange               |
| 65          | 21    | DxSpp               | Tractor/CTL    | Orange               | 999         | 9     | ITM                 | Tractor/CTL    | Orange               |
| 66          | 34    | DxSpp w/ITM         | Tractor/CTL    | Orange               |             |       |                     |                |                      |

Cut-To-Length Felling Specified (CTL), C6.41#  
 Leave Tree Mark (LTM), B2.35, C2.35# (Option 1).  
 Individual Tree Mark (ITM), C2.35#  
 Designation by Prescription (DxPre), C2.355#  
 Designation by Species and Diameter (DxSPP), C2.352#  
 Tractor Yarding Specified, B6.42, C6.42#  
 Forwarder Yarding Specified, B6.42, C6.42#