

**Highlighted Tower** (Red triangle)

**FS Radio Towers** (Black triangle)

**BLM Radio Towers** (Blue triangle)

**Dispatch Boundaries** (Red dashed line)

**State Boundaries** (Black dashed line)

**Urban Areas** (Grey square)

**Interstates** (Blue shield with '5')

**US Highways** (White shield with '2')

**State Highways** (Black line)

**Streams** (Blue line)

**Intermittent Streams** (Blue dashed line)

**Lakes, Bays, Estuaries or Ocean** (Blue area)

**Dry Lakes** (Yellow area)

**Intermittent Lakes** (Blue dashed area)

**Glaciers** (White area with blue outline)

**Swamps or Marshes** (Green area)

**Reservoirs** (Blue area)

**Intermittent Reservoirs** (Blue dashed area)

**Grizzly Mountain BLM**

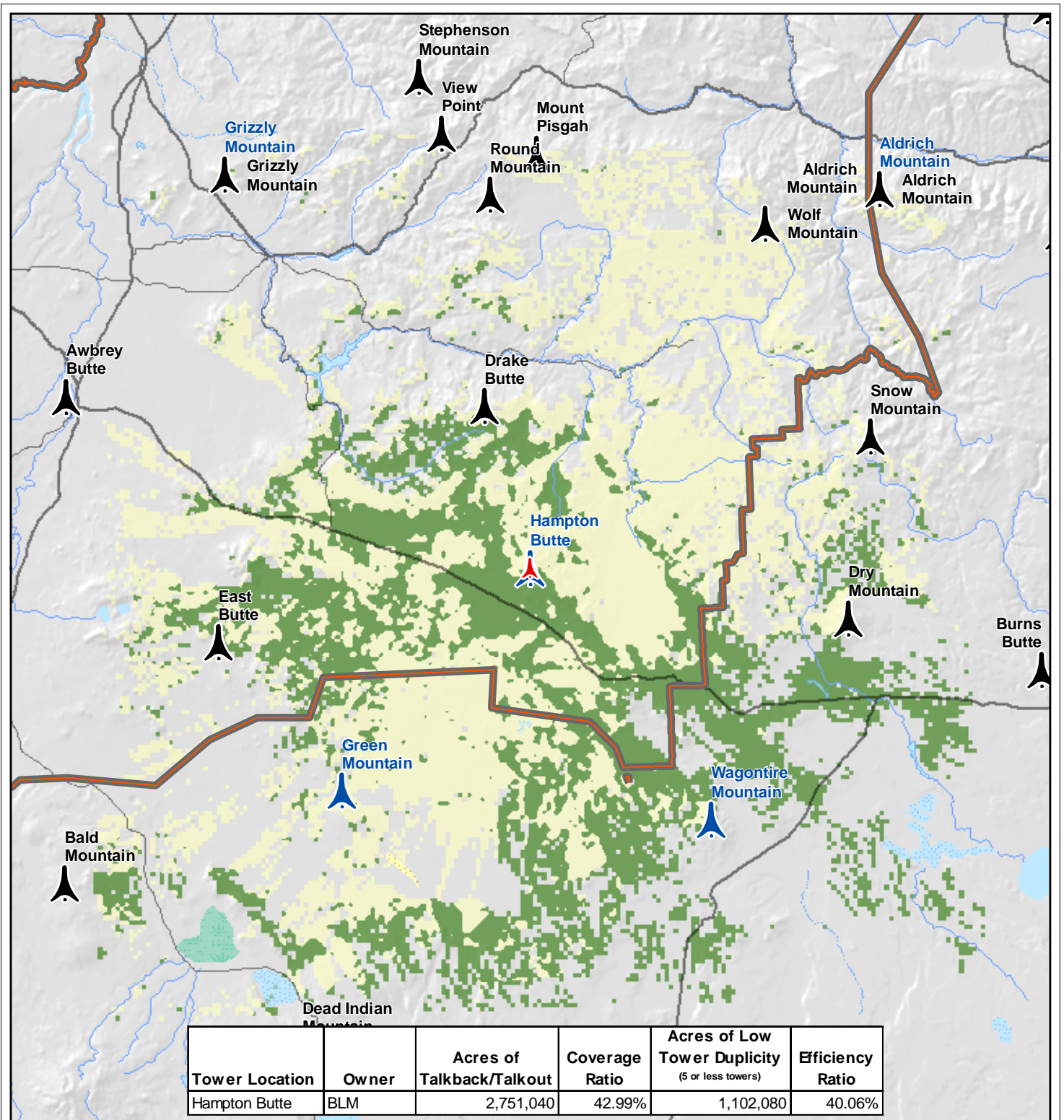
**Tower Coverage and Network Efficiency**

**Coverage Duplicity**

- 1 - 5 Towers
- > 5 Towers

**Location Map**

**Logos:** UAS (United States Forest Service), Tetra Tech EC, INC., and another agency logo.



- Highlighted Tower
- FS Radio Towers
- BLM Radio Towers
- Dispatch Boundaries
- State Boundaries
- Urban Areas
- Interstates
- US Highways
- State Highways
- Streams
- Intermittent Streams
- Lakes, Bays, Estuaries or Ocean
- Dry Lakes
- Intermittent Lakes
- Glaciers
- Swamps or Marshes
- Reservoirs
- Intermittent Reservoirs

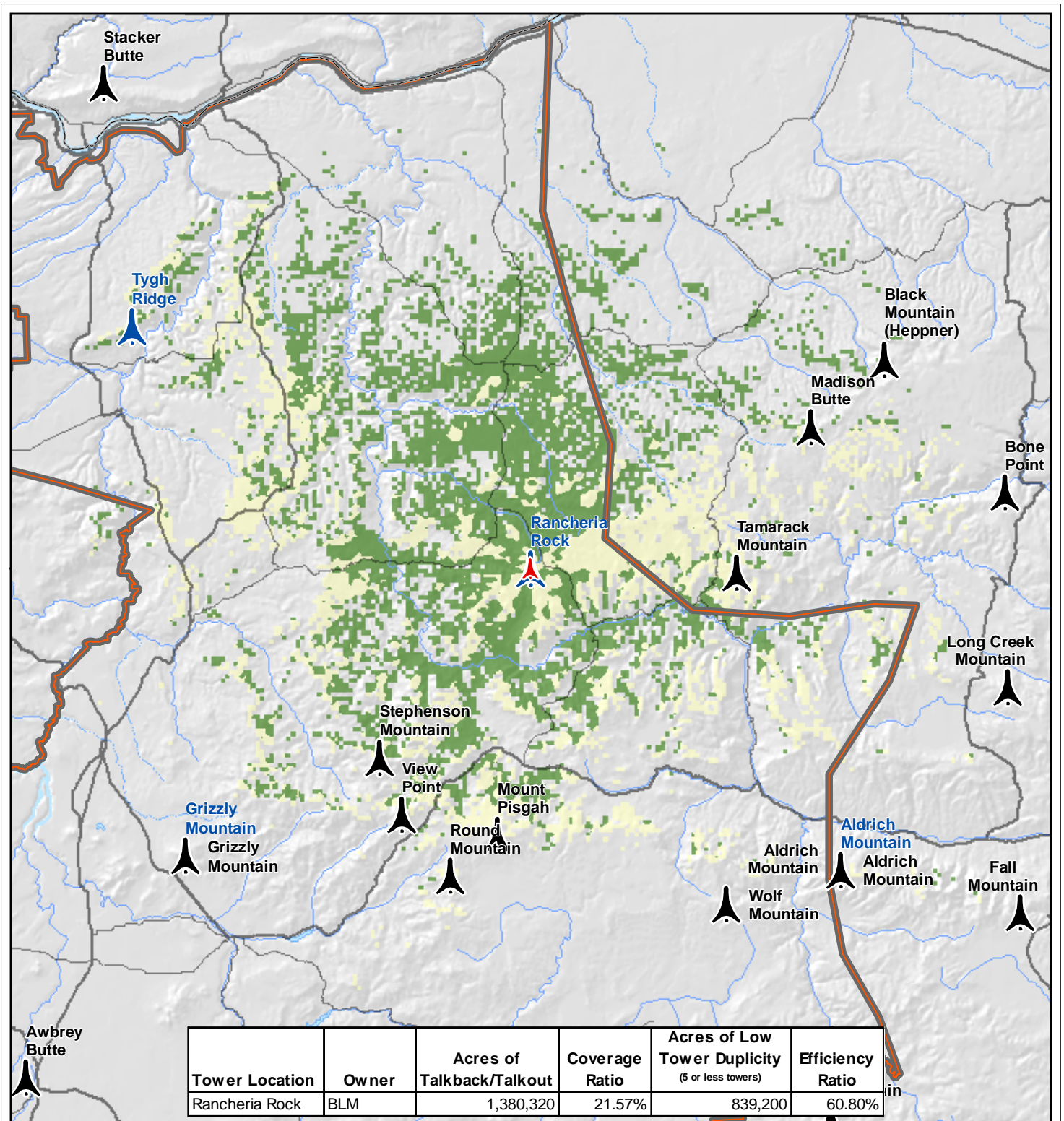
### Hampton Butte BLM

#### Tower Coverage and Network Efficiency

**Coverage Duplicity**

- 1 - 5 Towers
- > 5 Towers

Location Map



**Highlighted Tower** (Red triangle)

**FS Radio Towers** (Black triangle)

**BLM Radio Towers** (Blue triangle)

**Dispatch Boundaries** (Red dashed line)

**State Boundaries** (Black dashed line)

**Urban Areas** (Grey square)

**Interstates** (Red/Blue shield)

**US Highways** (White shield with black border)

**State Highways** (Black line)

**Streams** (Blue line)

**Intermittent Streams** (Blue dashed line)

**Lakes, Bays, Estuaries or Ocean** (Blue area)

**Dry Lakes** (Yellow area)

**Intermittent Lakes** (Blue dashed area)

**Glaciers** (Blue wavy area)

**Swamps or Marshes** (Green area)

**Reservoirs** (Blue area)

**Intermittent Reservoirs** (Blue dashed area)

0 2.5 5 10 Miles

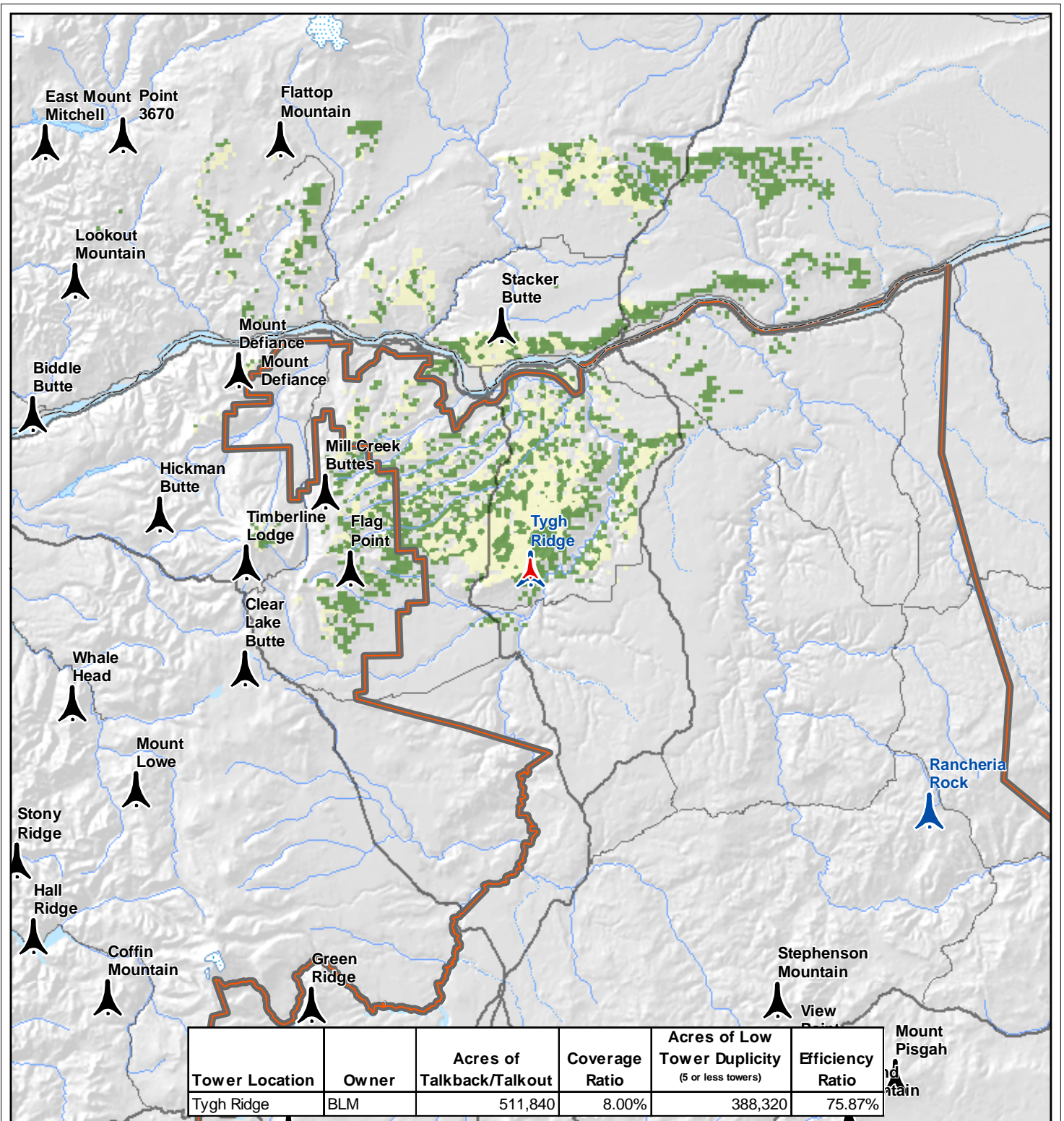
Location Map

**Rancheria Rock BLM**

**Tower Coverage and Network Efficiency**

**Coverage Duplicity**

- 1 - 5 Towers
- > 5 Towers



**Tygh Ridge BLM**

**Tower Coverage and Network Efficiency**

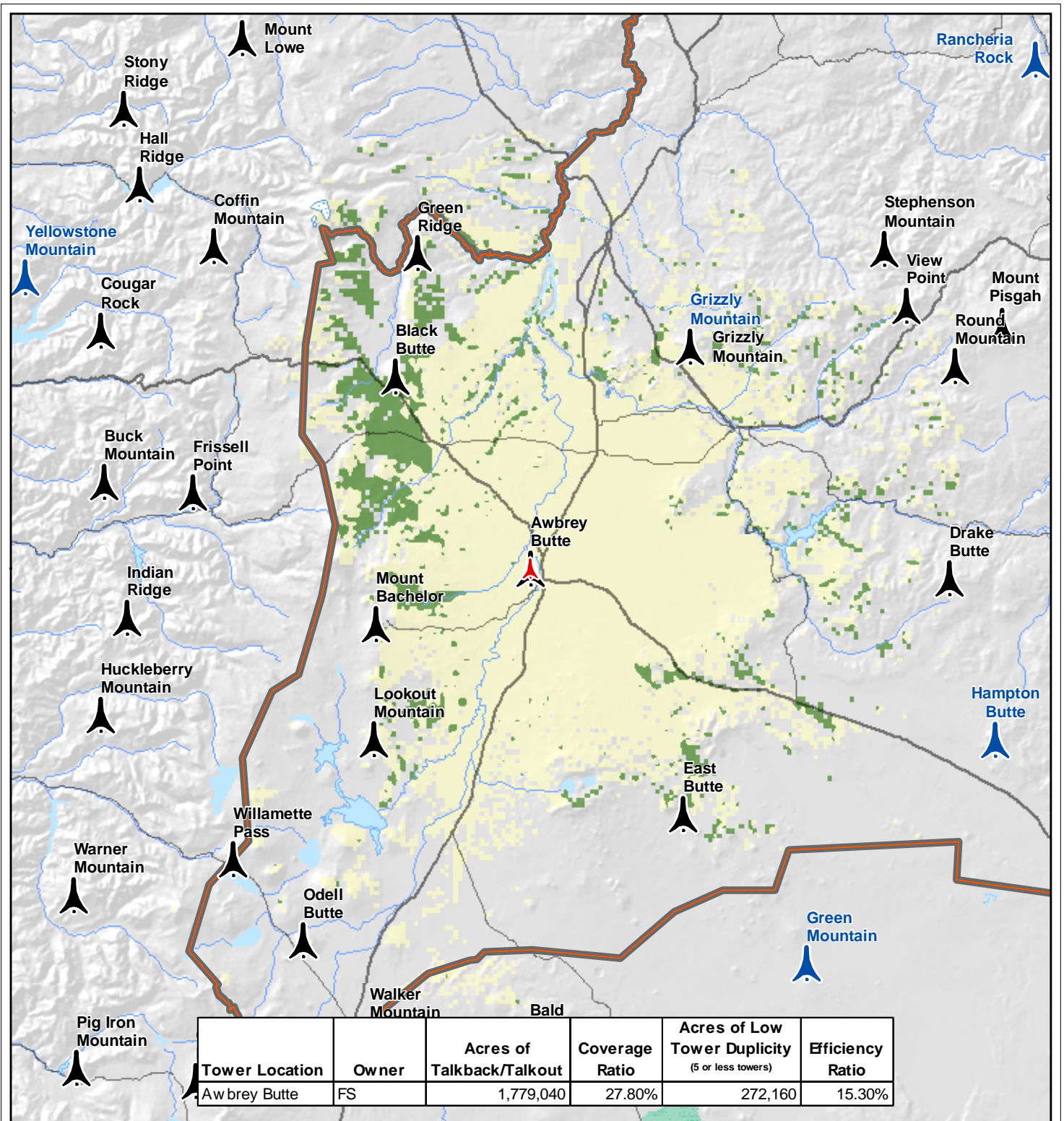
**Coverage Duplicity**

- 1 - 5 Towers
- > 5 Towers

**Legend**

- Highlighted Tower
- FS Radio Towers
- BLM Radio Towers
- Dispatch Boundaries
- State Boundaries
- Urban Areas
- Interstates
- US Highways
- State Highways
- Streams
- Intermittent Streams
- Lakes, Bays, Estuaries or Ocean
- Dry Lakes
- Intermittent Lakes
- Glaciers
- Swamps or Marshes
- Reservoirs
- Intermittent Reservoirs

Location Map



**Highlighted Tower** (Red triangle)

**FS Radio Towers** (Black triangle)

**BLM Radio Towers** (Blue triangle)

**Dispatch Boundaries** (Brown outline)

**State Boundaries** (Grey outline)

**Urban Areas** (Grey square)

**Interstates** (Blue shield with 5)

**US Highways** (White shield with 2)

**State Highways** (Black line)

**Streams** (Blue line)

**Intermittent Streams** (Blue dashed line)

**Lakes, Bays, Estuaries or Ocean** (Blue area)

**Dry Lakes** (Yellow area)

**Intermittent Lakes** (Blue dashed area)

**Glaciers** (White area with blue outline)

**Swamps or Marshes** (Green area)

**Reservoirs** (Blue area)

**Intermittent Reservoirs** (Blue dashed area)

0 2.5 5 10 Miles

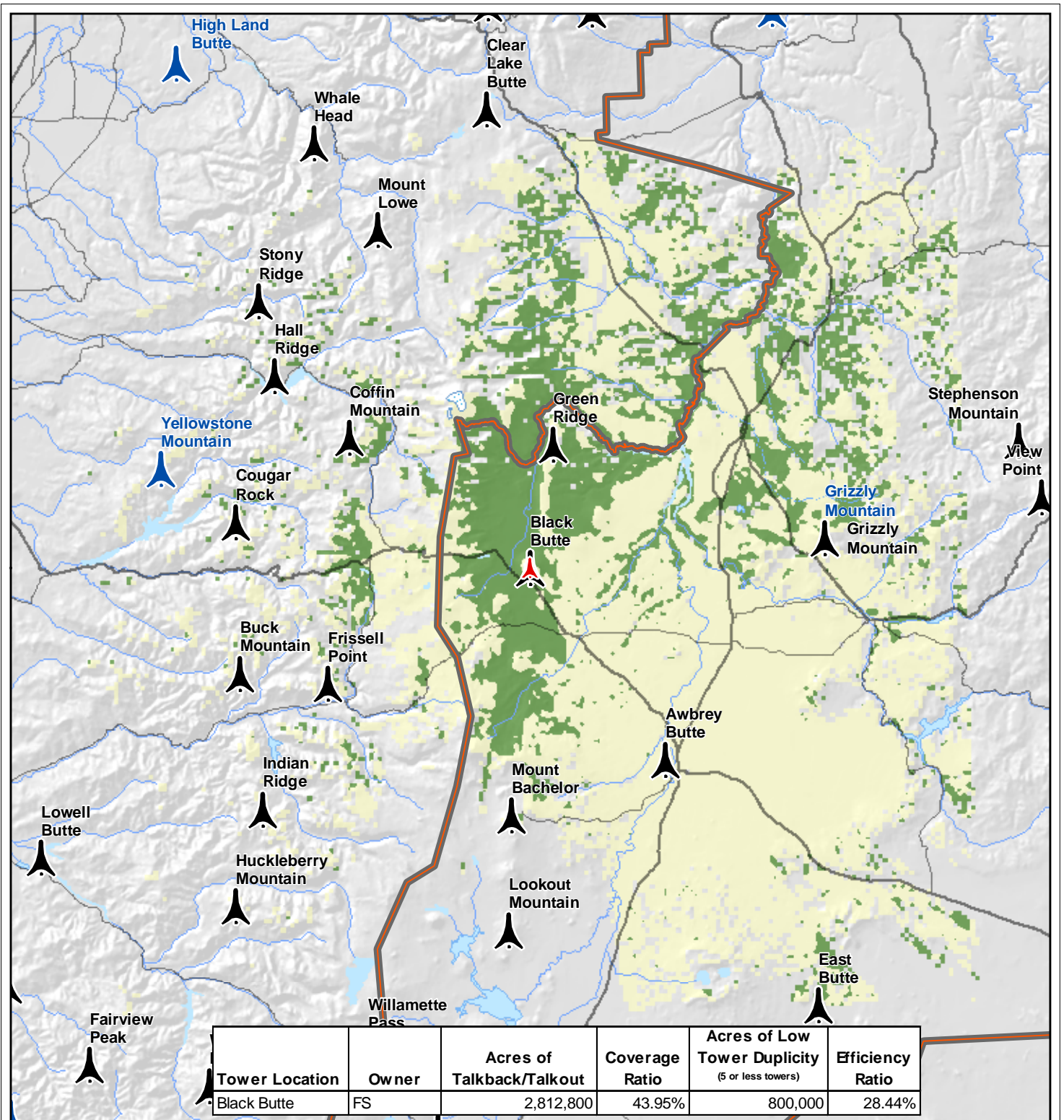
Location Map

**Awbrey Butte**

Tower Coverage and Network Efficiency

**Coverage Duplicity**

- 1 - 5 Towers
- > 5 Towers



- Highlighted Tower
- FS Radio Towers
- BLM Radio Towers
- Dispatch Boundaries
- State Boundaries
- Urban Areas
- Interstates
- US Highways
- State Highways
- Streams
- Intermittent Streams
- Lakes, Bays, Estuaries or Ocean
- Dry Lakes
- Intermittent Lakes
- Glaciers
- Swamps or Marshes
- Reservoirs
- Intermittent Reservoirs

### Black Butte

#### Tower Coverage and Network Efficiency

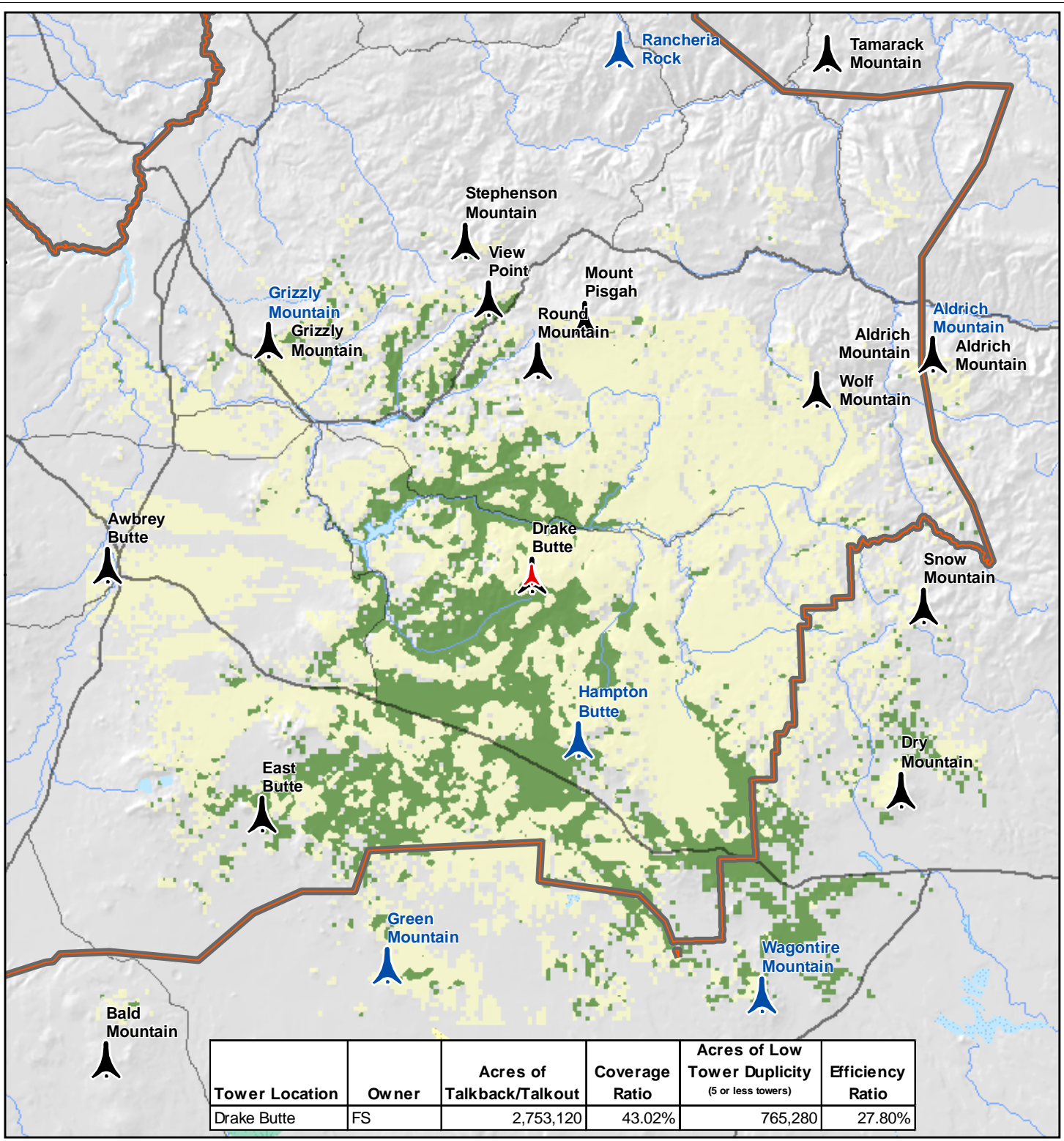
**Coverage Duplicity**

1 - 5 Towers

> 5 Towers

Location Map

0 2.5 5 10  
Miles



- Highlighted Tower
- FS Radio Towers
- BLM Radio Towers
- Dispatch Boundaries
- State Boundaries
- Urban Areas
- Interstates
- US Highways
- State Highways
- Streams
- Intermittent Streams
- Lakes, Bays, Estuaries or Ocean
- Dry Lakes
- Intermittent Lakes
- Glaciers
- Swamps or Marshes
- Reservoirs
- Intermittent Reservoirs

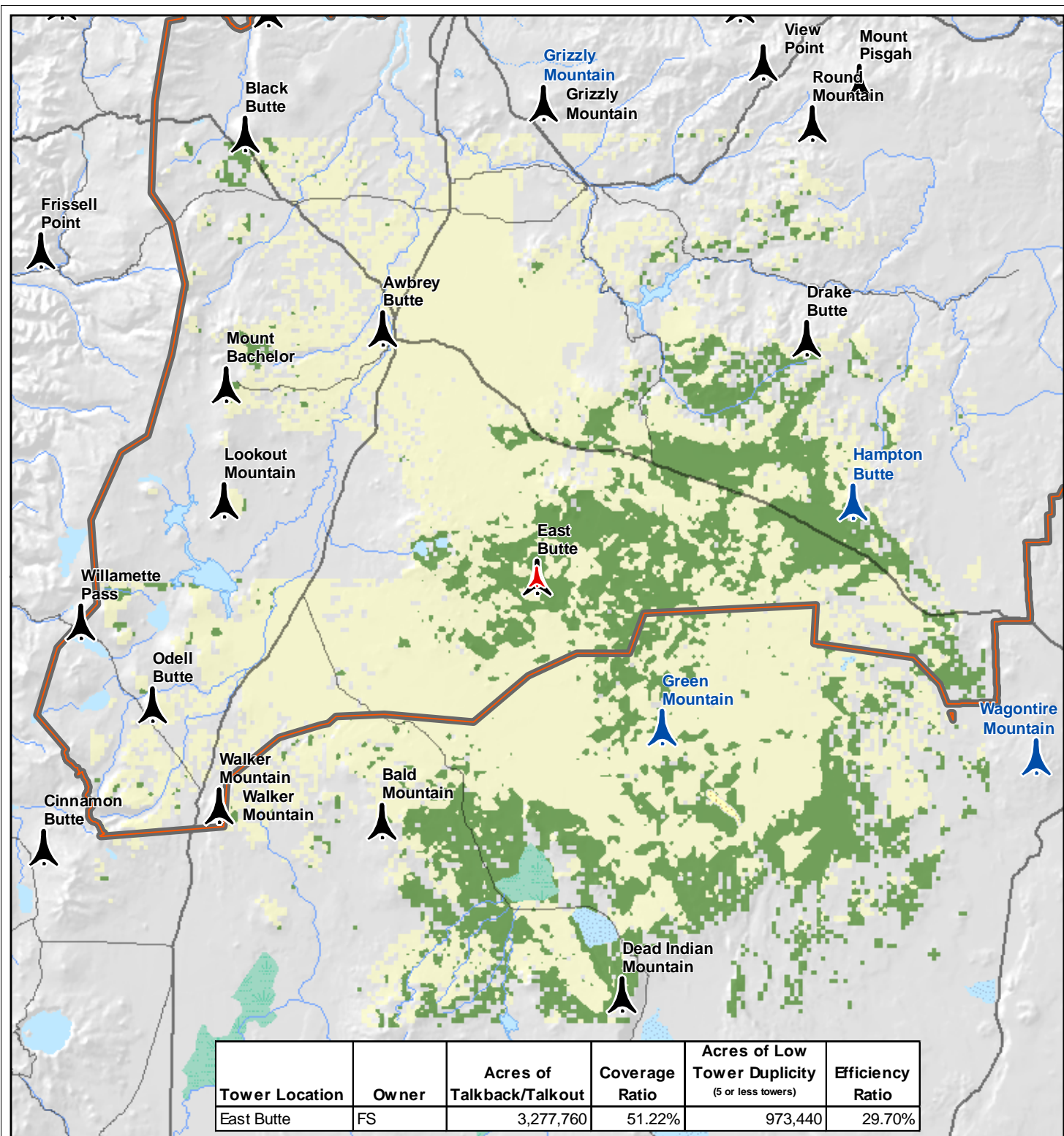
### Drake Butte

Tower Coverage and Network Efficiency

**Coverage Duplicity**

- 1 - 5 Towers
- > 5 Towers

Location Map



- Highlighted Tower
- FS Radio Towers
- BLM Radio Towers
- Dispatch Boundaries
- State Boundaries
- Urban Areas
- Interstates
- US Highways
- State Highways
- Streams
- Intermittent Streams
- Lakes, Bays, Estuaries or Ocean
- Dry Lakes
- Intermittent Lakes
- Glaciers
- Swamps or Marshes
- Reservoirs
- Intermittent Reservoirs

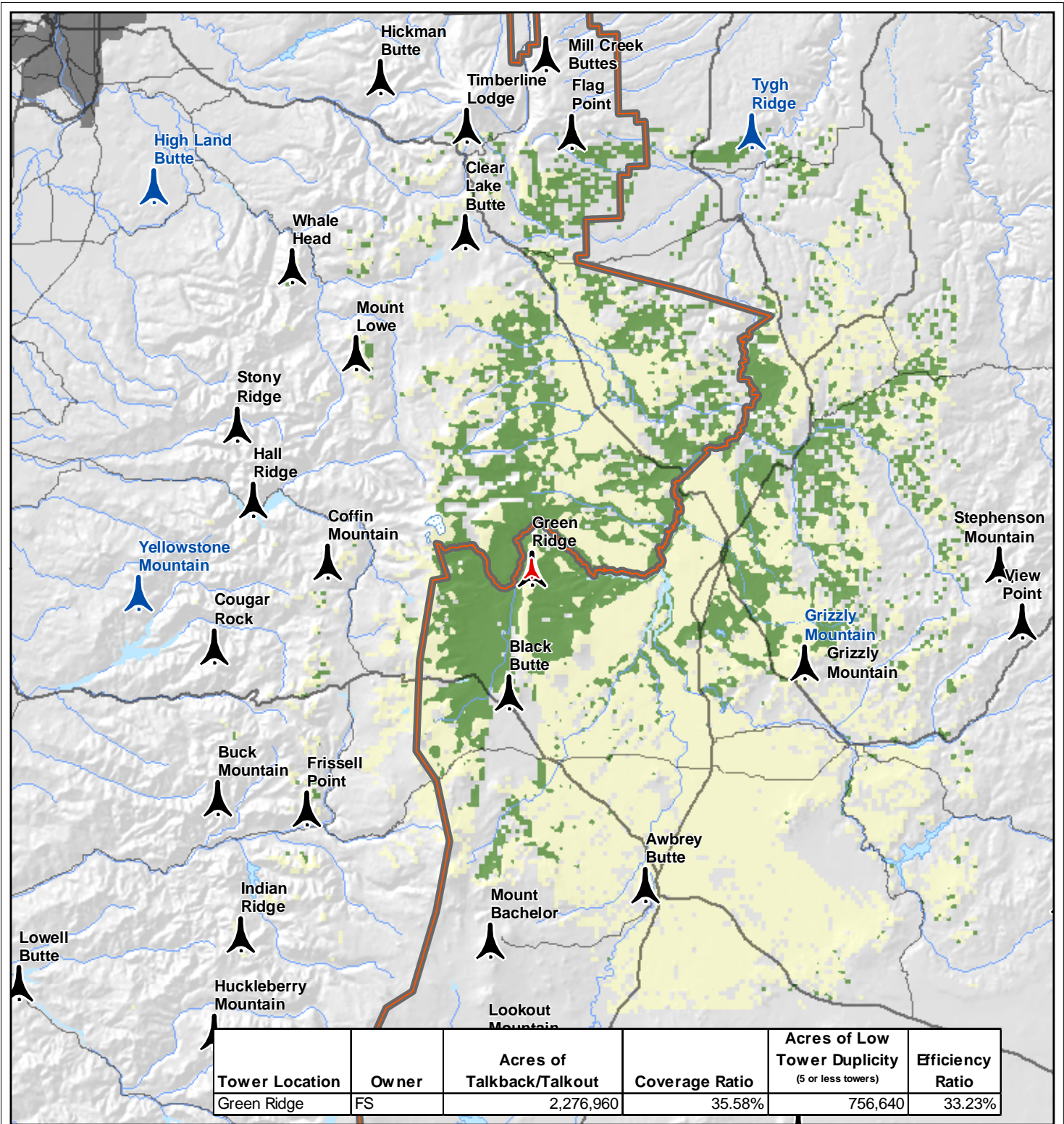
### East Butte

#### Tower Coverage and Network Efficiency

**Coverage Duplicity**

- 1 - 5 Towers
- > 5 Towers





**Highlighted Tower** (Red triangle)

**FS Radio Towers** (Black triangle)

**BLM Radio Towers** (Blue triangle)

**Dispatch Boundaries** (Red dashed line)

**State Boundaries** (Black dashed line)

**Urban Areas** (Grey square)

**Interstates** (Red and blue shield)

**US Highways** (Blue shield)

**State Highways** (Black line)

**Streams** (Blue line)

**Intermittent Streams** (Blue dashed line)

**Lakes, Bays, Estuaries or Ocean** (Blue area)

**Dry Lakes** (Yellow area)

**Intermittent Lakes** (Blue dashed area)

**Glaciers** (Blue area)

**Swamps or Marshes** (Green area)

**Reservoirs** (Blue area)

**Intermittent Reservoirs** (Blue dashed area)

0 2.5 5 10 Miles

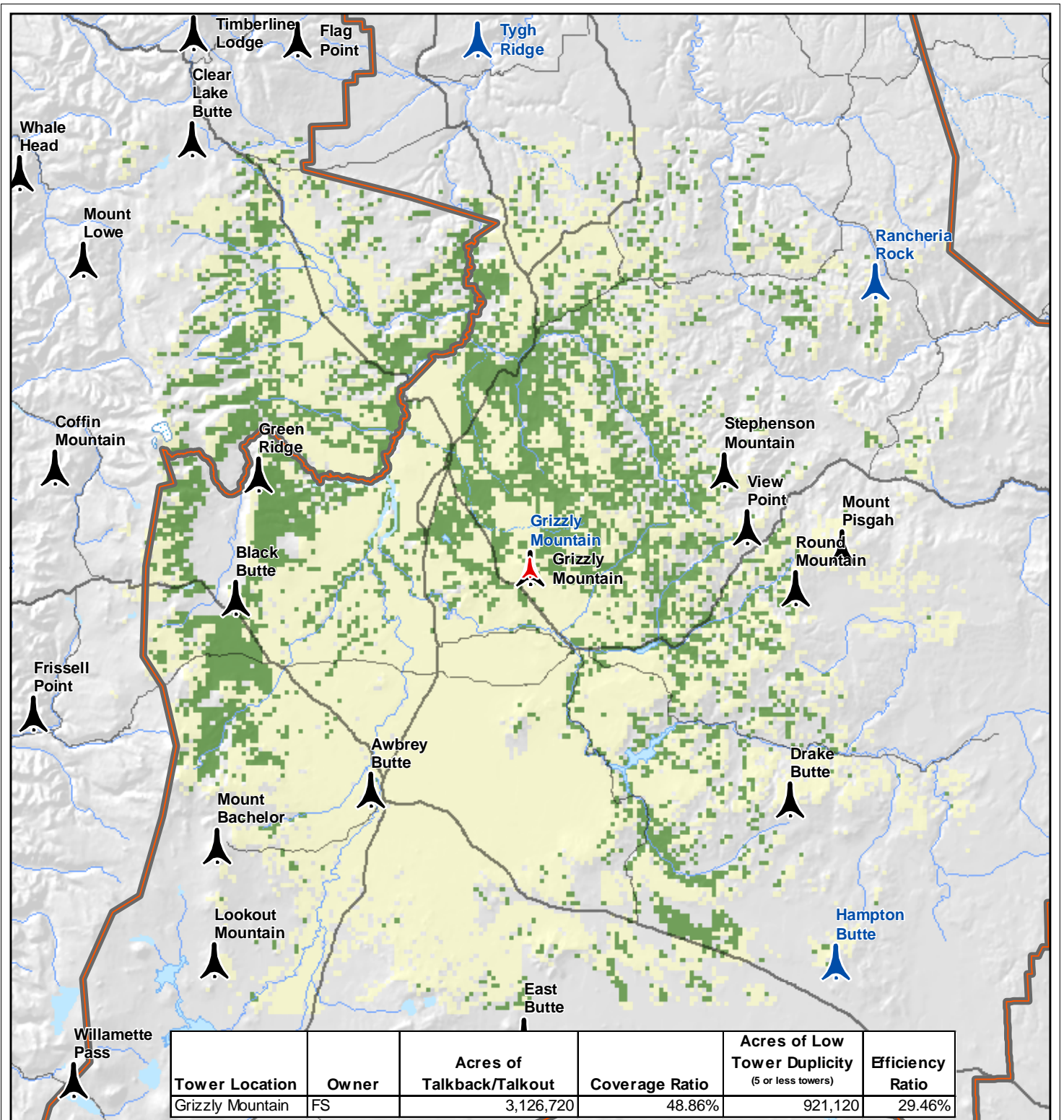
Location Map

**Green Ridge**

**Tower Coverage and Network Efficiency**

**Coverage Duplicity**

- 1 - 5 Towers
- > 5 Towers



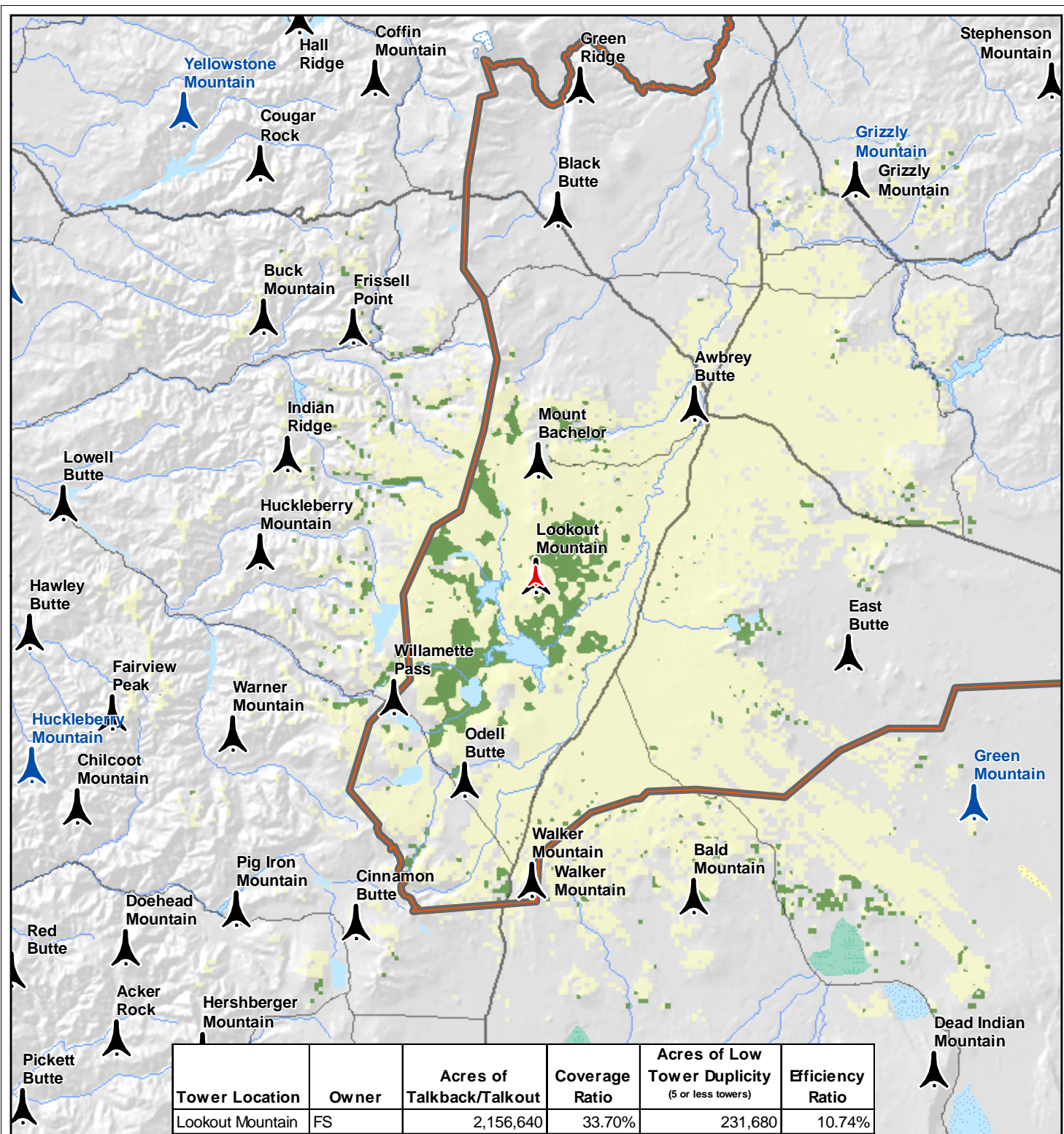
- Highlighted Tower
- FS Radio Towers
- BLM Radio Towers
- Dispatch Boundaries
- State Boundaries
- Urban Areas
- Interstates
- US Highways
- State Highways
- Streams
- Intermittent Streams
- Lakes, Bays, Estuaries or Ocean
- Dry Lakes
- Intermittent Lakes
- Glaciers
- Swamps or Marshes
- Reservoirs
- Intermittent Reservoirs

### Grizzly Mountain

#### Tower Coverage and Network Efficiency

**Coverage Duplicity**

- 1 - 5 Towers
- > 5 Towers



**Highlighted Tower** (Red triangle)

**FS Radio Towers** (Black triangle)

**BLM Radio Towers** (Blue triangle)

**Dispatch Boundaries** (Brown outline)

**State Boundaries** (Grey outline)

**Urban Areas** (Grey shading)

**Interstates** (Red and blue shield)

**US Highways** (White shield with black border)

**State Highways** (Black line)

**Streams** (Blue line)

**Intermittent Streams** (Dashed blue line)

**Lakes, Bays, Estuaries or Ocean** (Blue area)

**Dry Lakes** (Yellow area)

**Intermittent Lakes** (Light blue area)

**Glaciers** (White area with blue outline)

**Swamps or Marshes** (Green area)

**Reservoirs** (Blue area with white outline)

**Intermittent Reservoirs** (Light blue area with white outline)

**Lookout Mountain**

**Tower Coverage and Network Efficiency**

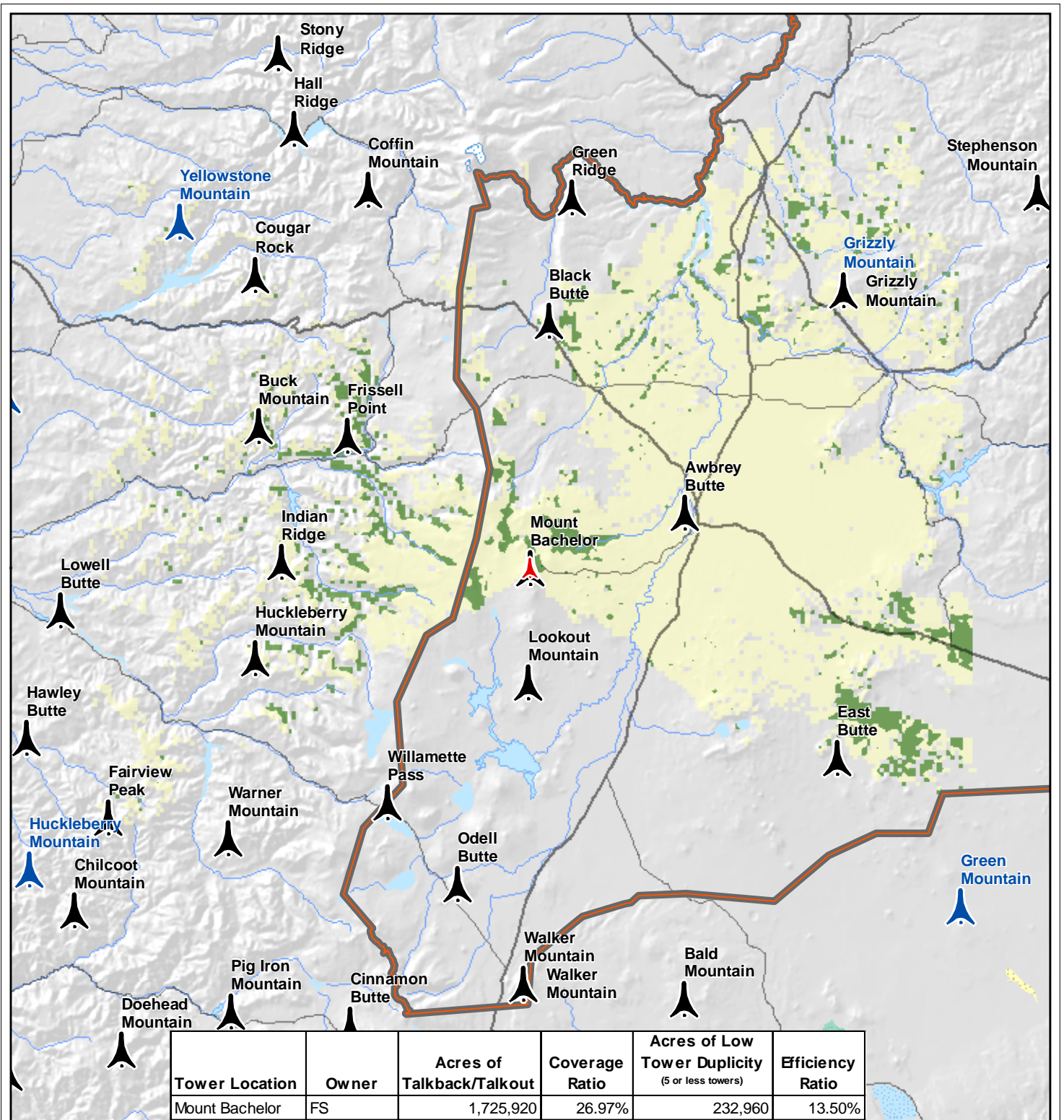
**Coverage Duplicity**

- 1 - 5 Towers (Green)
- > 5 Towers (Yellow)

**Location Map**

**Scale:** 0 2.5 5 10 Miles

**Logos:** UAS (United States Air Service), Tetra Tech EC, Inc., and Oregon Department of Transportation.



**Highlighted Tower** (Red triangle)

**FS Radio Towers** (Black triangle)

**BLM Radio Towers** (Blue triangle)

**Dispatch Boundaries** (Brown outline)

**State Boundaries** (Grey outline)

**Urban Areas** (Grey square)

**Interstates** (Blue shield with 5)

**US Highways** (White shield with 2)

**State Highways** (Black line)

**Streams** (Blue line)

**Intermittent Streams** (Dashed blue line)

**Lakes, Bays, Estuaries or Ocean** (Blue area)

**Dry Lakes** (Yellow area)

**Intermittent Lakes** (Light blue area)

**Glaciers** (White area with blue outline)

**Swamps or Marshes** (Green area)

**Reservoirs** (Light blue area)

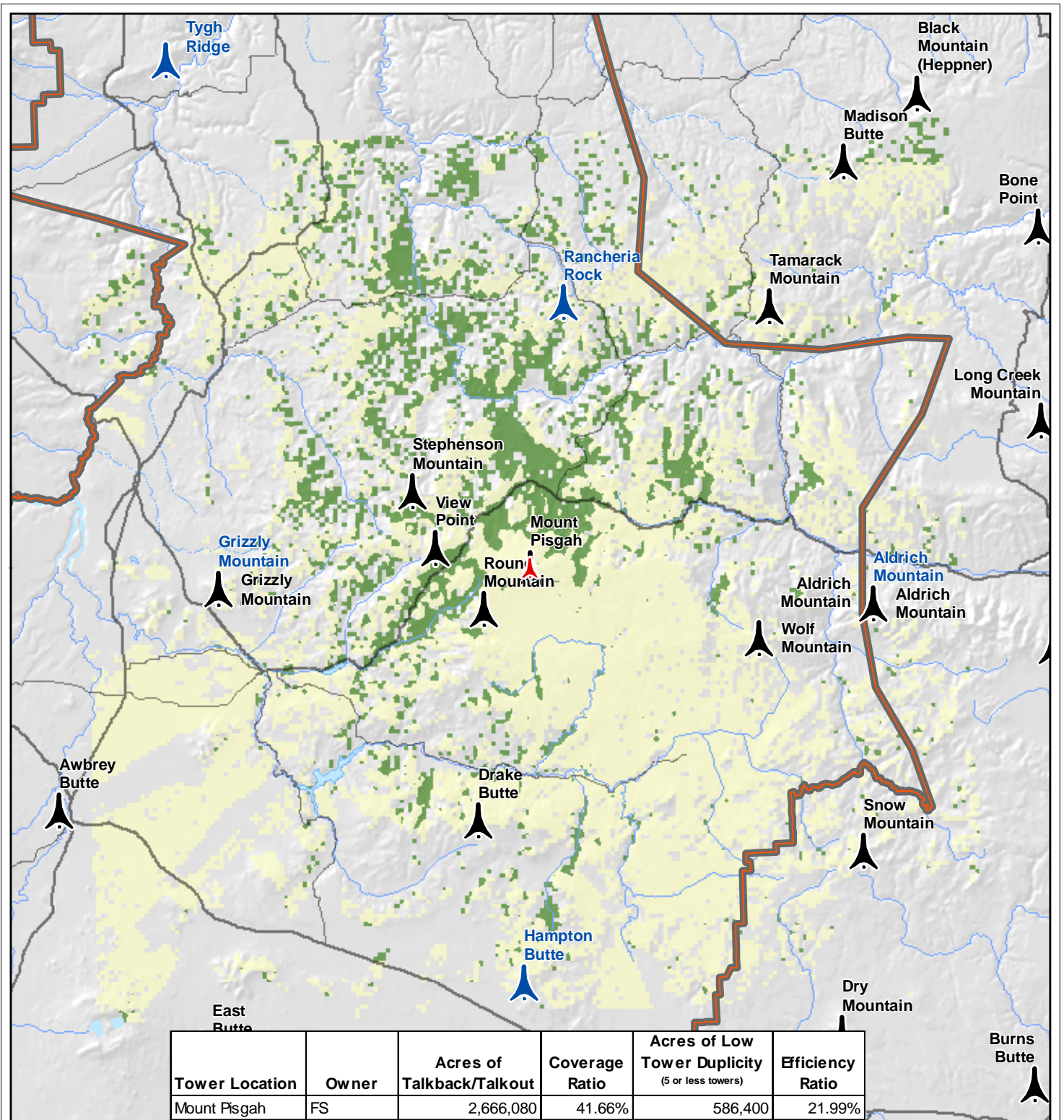
**Intermittent Reservoirs** (Dashed light blue area)

**Location Map**

**Mount Bachelor**  
Tower Coverage and Network Efficiency

**Coverage Duplicity**

- Green: 1 - 5 Towers
- Yellow: > 5 Towers



**Highlighted Tower** (Red triangle)

**FS Radio Towers** (Black triangle)

**BLM Radio Towers** (Blue triangle)

**Dispatch Boundaries** (Red dashed line)

**State Boundaries** (Black dashed line)

**Urban Areas** (Grey square)

**Interstates** (Red and blue shield)

**US Highways** (Blue shield)

**State Highways** (Black line)

**Streams** (Blue line)

**Intermittent Streams** (Blue dashed line)

**Lakes, Bays, Estuaries or Ocean** (Blue area)

**Dry Lakes** (Yellow area)

**Intermittent Lakes** (Blue area)

**Glaciers** (Blue area)

**Swamps or Marshes** (Green area)

**Reservoirs** (Blue area)

**Intermittent Reservoirs** (Blue area)

**Mount Pisgah**

**Tower Coverage and Network Efficiency**

**Coverage Duplicity**

- 1 - 5 Towers (Green)
- > 5 Towers (Yellow)

**Location Map**

**Legend**

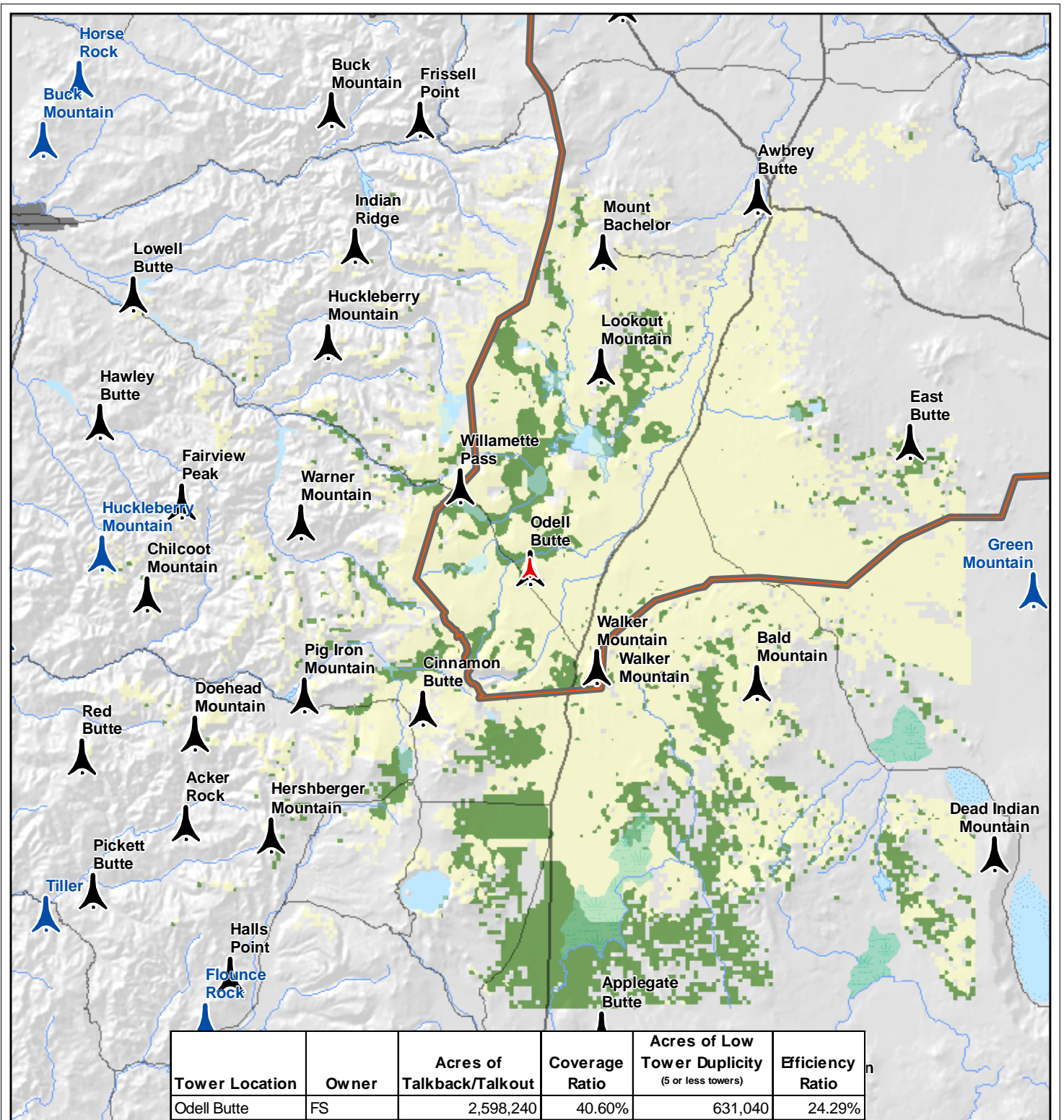
- Highlighted Tower
- FS Radio Towers
- BLM Radio Towers
- Dispatch Boundaries
- State Boundaries
- Urban Areas
- Interstates
- US Highways
- State Highways
- Streams
- Intermittent Streams
- Lakes, Bays, Estuaries or Ocean
- Dry Lakes
- Intermittent Lakes
- Glaciers
- Swamps or Marshes
- Reservoirs
- Intermittent Reservoirs

**Scale**

0 2.5 5 10 Miles

**Logos**

- UAS (United States Forest Service)
- Tt (Tetra Tech EC, Inc.)
- BLM (Bureau of Land Management)



**Highlighted Tower** (Red triangle icon)

**FS Radio Towers** (Black triangle icon)

**BLM Radio Towers** (Blue triangle icon)

**Dispatch Boundaries** (Red dashed line icon)

**State Boundaries** (Black dashed line icon)

**Urban Areas** (Grey square icon)

**Interstates** (Blue and red shield icon)

**US Highways** (Black shield icon)

**State Highways** (Black line icon)

**Streams** (Blue line icon)

**Intermittent Streams** (Blue dashed line icon)

**Lakes, Bays, Estuaries or Ocean** (Blue area icon)

**Dry Lakes** (Yellow area icon)

**Intermittent Lakes** (Blue dashed area icon)

**Glaciers** (Blue area icon)

**Swamps or Marshes** (Green area icon)

**Reservoirs** (Blue area icon)

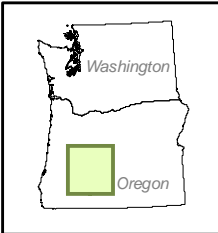
**Intermittent Reservoirs** (Blue dashed area icon)


**Odell Butte**

**Tower Coverage and Network Efficiency**




**Coverage Duplicity**

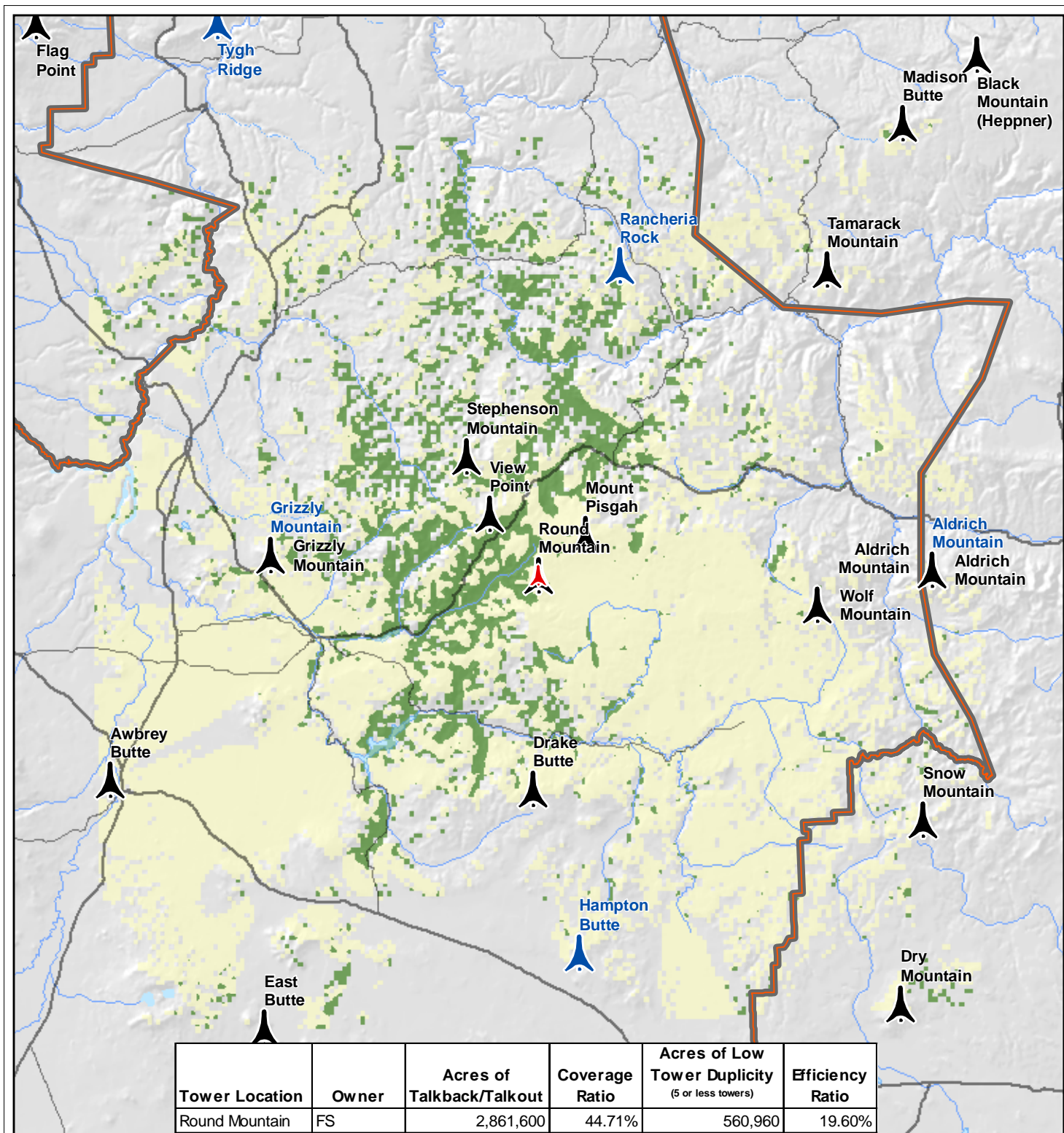
- 1 - 5 Towers
- > 5 Towers





0 2.5 5 10  
Miles



- Highlighted Tower
- FS Radio Towers
- BLM Radio Towers
- Dispatch Boundaries
- State Boundaries
- Urban Areas
- Interstates
- US Highways
- State Highways
- Streams
- Intermittent Streams
- Lakes, Bays, Estuaries or Ocean
- Dry Lakes
- Intermittent Lakes
- Glaciers
- Swamps or Marshes
- Reservoirs
- Intermittent Reservoirs

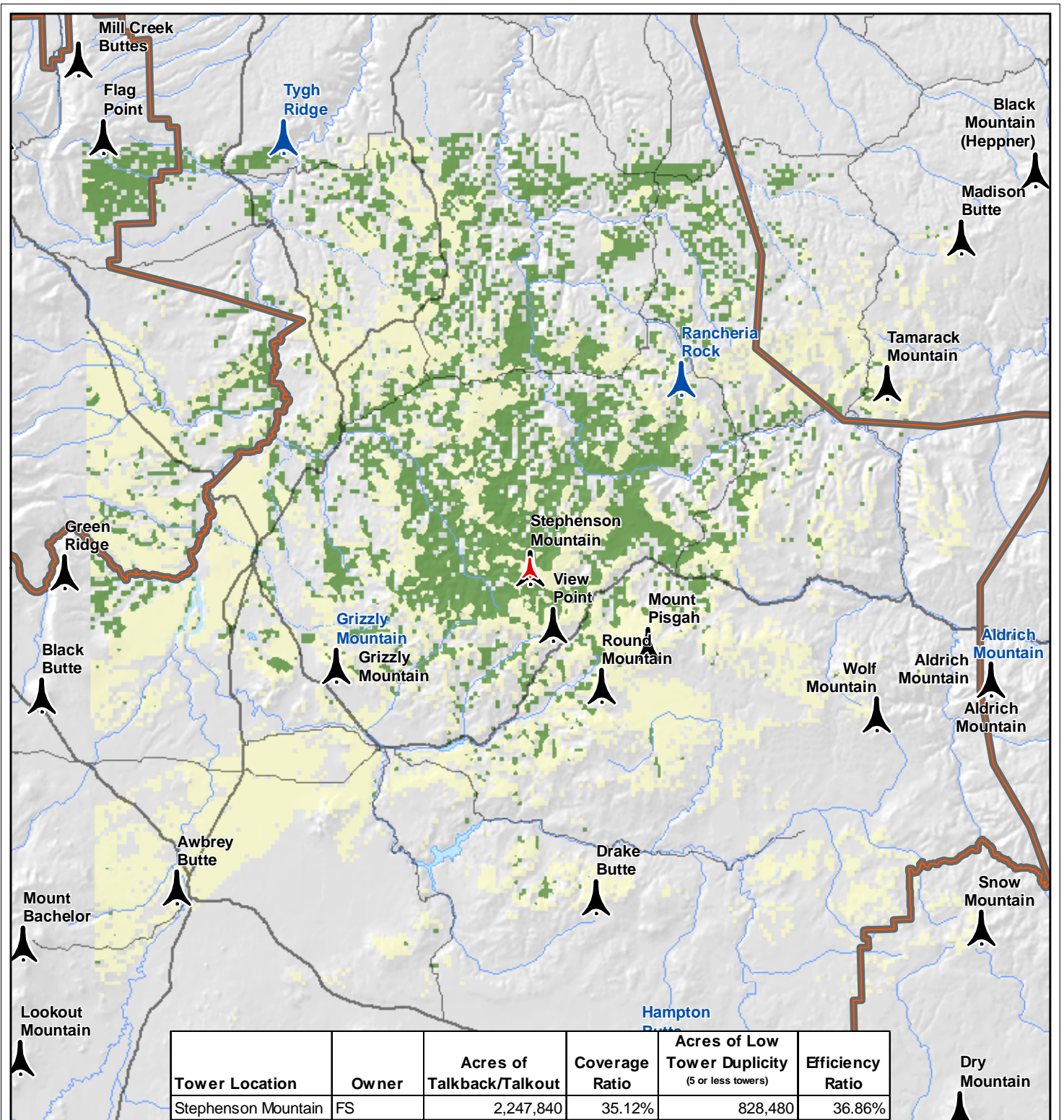
### Round Mountain

#### Tower Coverage and Network Efficiency

**Coverage Duplicity**

- 1 - 5 Towers
- > 5 Towers

0 2.5 5 10  
Miles



**Highlighted Tower** (Red triangle)

**FS Radio Towers** (Black triangle)

**BLM Radio Towers** (Blue triangle)

**Dispatch Boundaries** (Brown outline)

**State Boundaries** (Grey outline)

**Urban Areas** (Grey shading)

**Interstates** (Red and blue shield)

**US Highways** (Black shield with number)

**State Highways** (Black line)

**Streams** (Blue line)

**Intermittent Streams** (Dashed blue line)

**Lakes, Bays, Estuaries or Ocean** (Blue area)

**Dry Lakes** (Yellow area)

**Intermittent Lakes** (Light blue area)

**Glaciers** (White area with blue outline)

**Swamps or Marshes** (Green area)

**Reservoirs** (Blue area)

**Intermittent Reservoirs** (Light blue area)

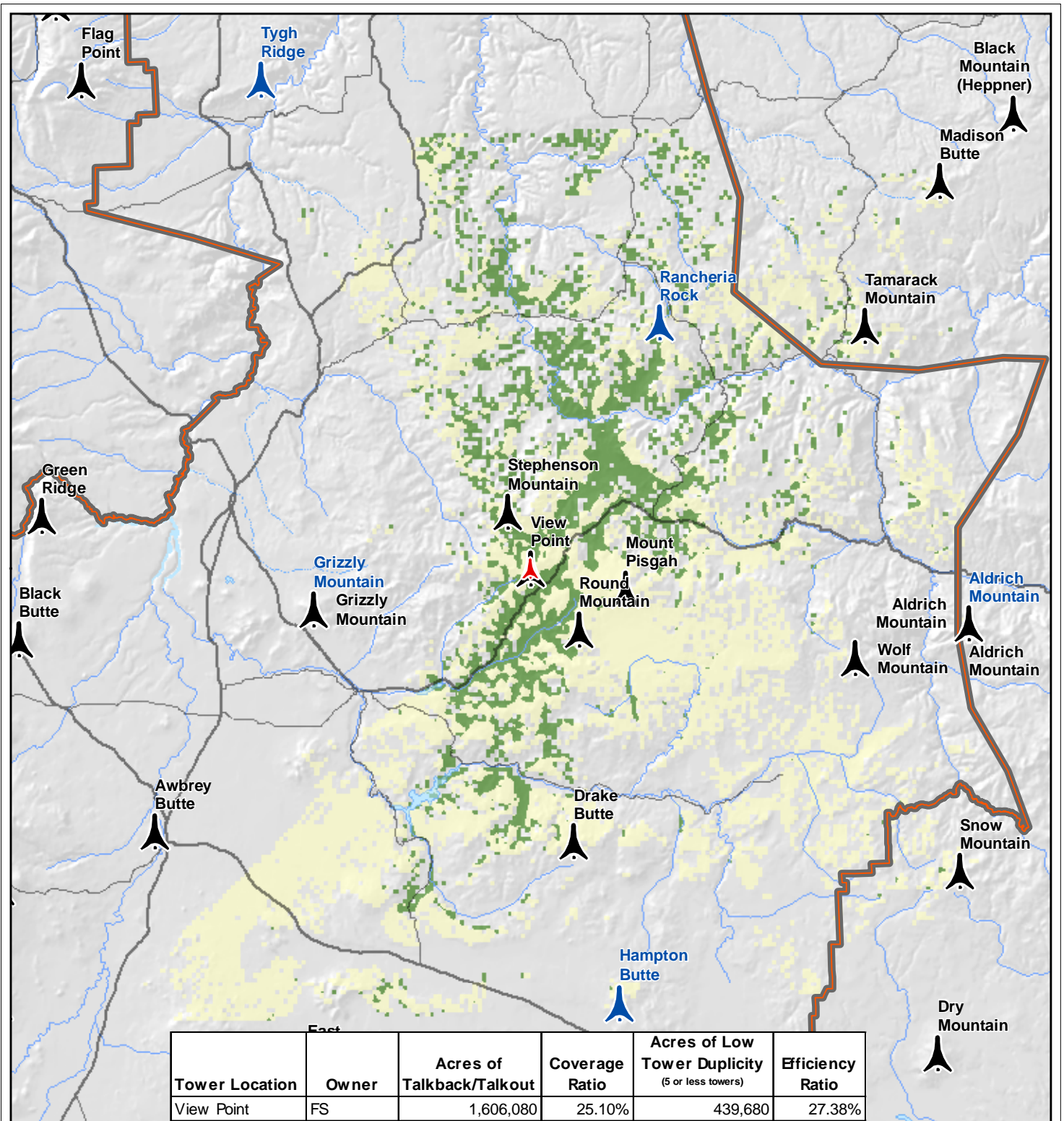
### Stephenson Mountain

#### Tower Coverage and Network Efficiency

**Coverage Duplicity**

- Green: 1 - 5 Towers
- Yellow: > 5 Towers





**Highlighted Tower** (Red triangle)

**FS Radio Towers** (Black triangle)

**BLM Radio Towers** (Blue triangle)

**Dispatch Boundaries** (Brown outline)

**State Boundaries** (Grey outline)

**Urban Areas** (Grey square)

**Interstates** (Blue shield with 5)

**US Highways** (White shield with 2)

**State Highways** (Black line)

**Streams** (Blue line)

**Intermittent Streams** (Blue dashed line)

**Lakes, Bays, Estuaries or Ocean** (Blue area)

**Dry Lakes** (Yellow area)

**Intermittent Lakes** (Blue dashed area)

**Glaciers** (Blue area)

**Swamps or Marshes** (Green area)

**Reservoirs** (Blue area)

**Intermittent Reservoirs** (Blue dashed area)

**View Point**

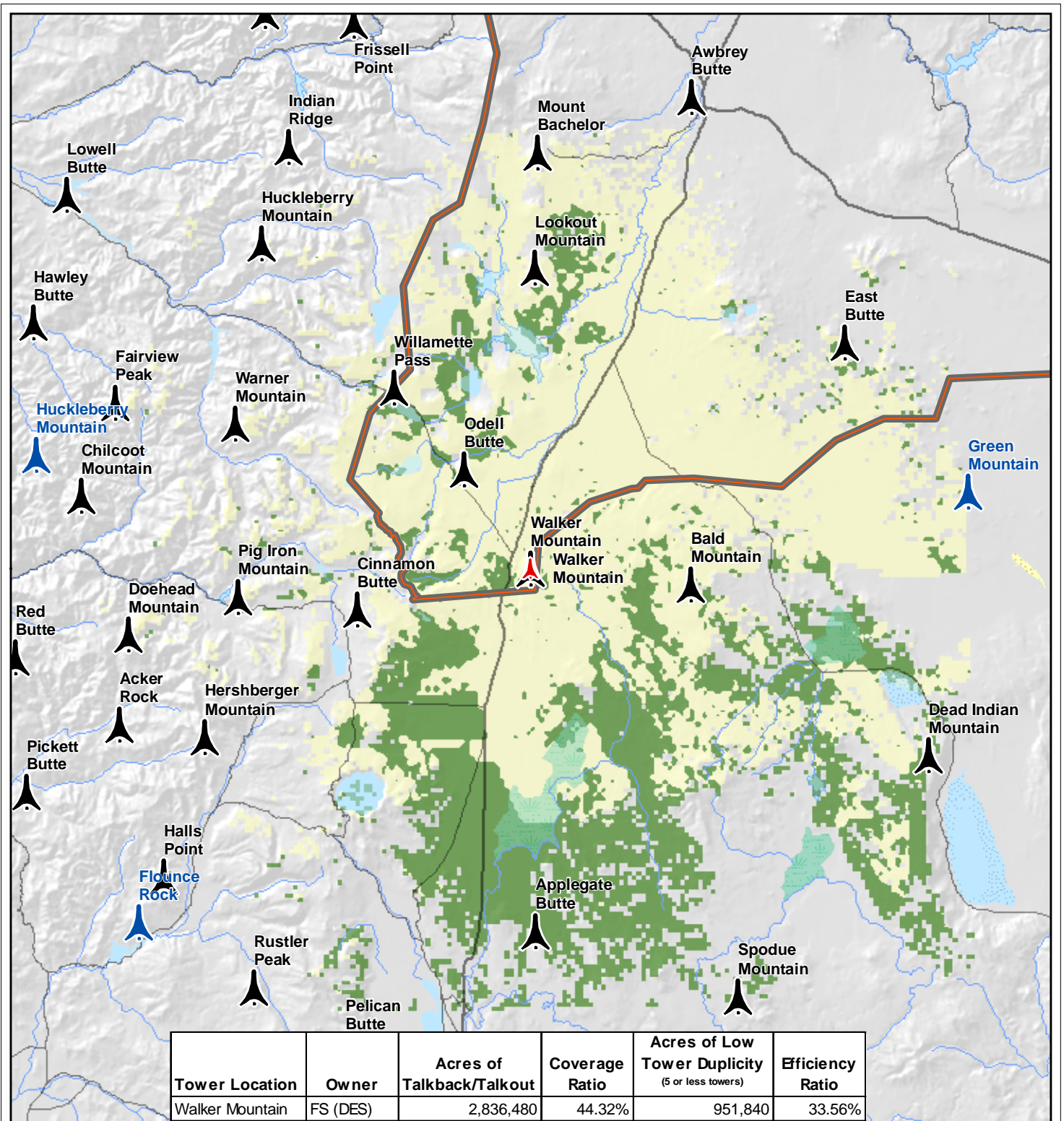
**Tower Coverage and Network Efficiency**

**Coverage Duplicity**

- 1 - 5 Towers
- > 5 Towers

Location Map

0 2.5 5 10 Miles



- Highlighted Tower
- FS Radio Towers
- BLM Radio Towers
- Dispatch Boundaries
- State Boundaries
- Urban Areas
- Interstates
- US Highways
- State Highways
- Streams
- Intermittent Streams
- Lakes, Bays, Estuaries or Ocean
- Dry Lakes
- Intermittent Lakes
- Glaciers
- Swamps or Marshes
- Reservoirs
- Intermittent Reservoirs

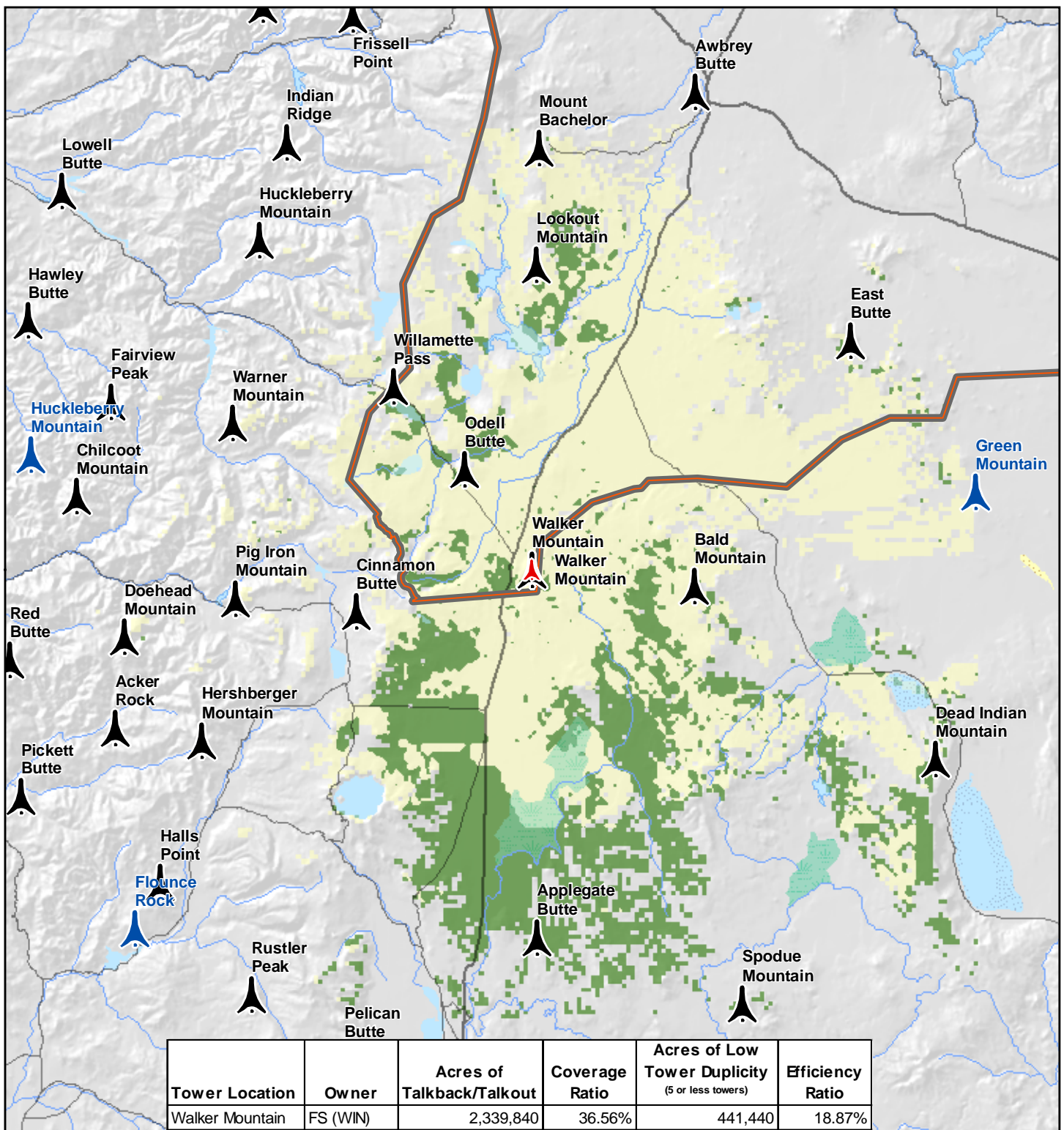
### Walker Mountain

#### Tower Coverage and Network Efficiency

**Coverage Duplicity**

- 1 - 5 Towers
- > 5 Towers

Location Map



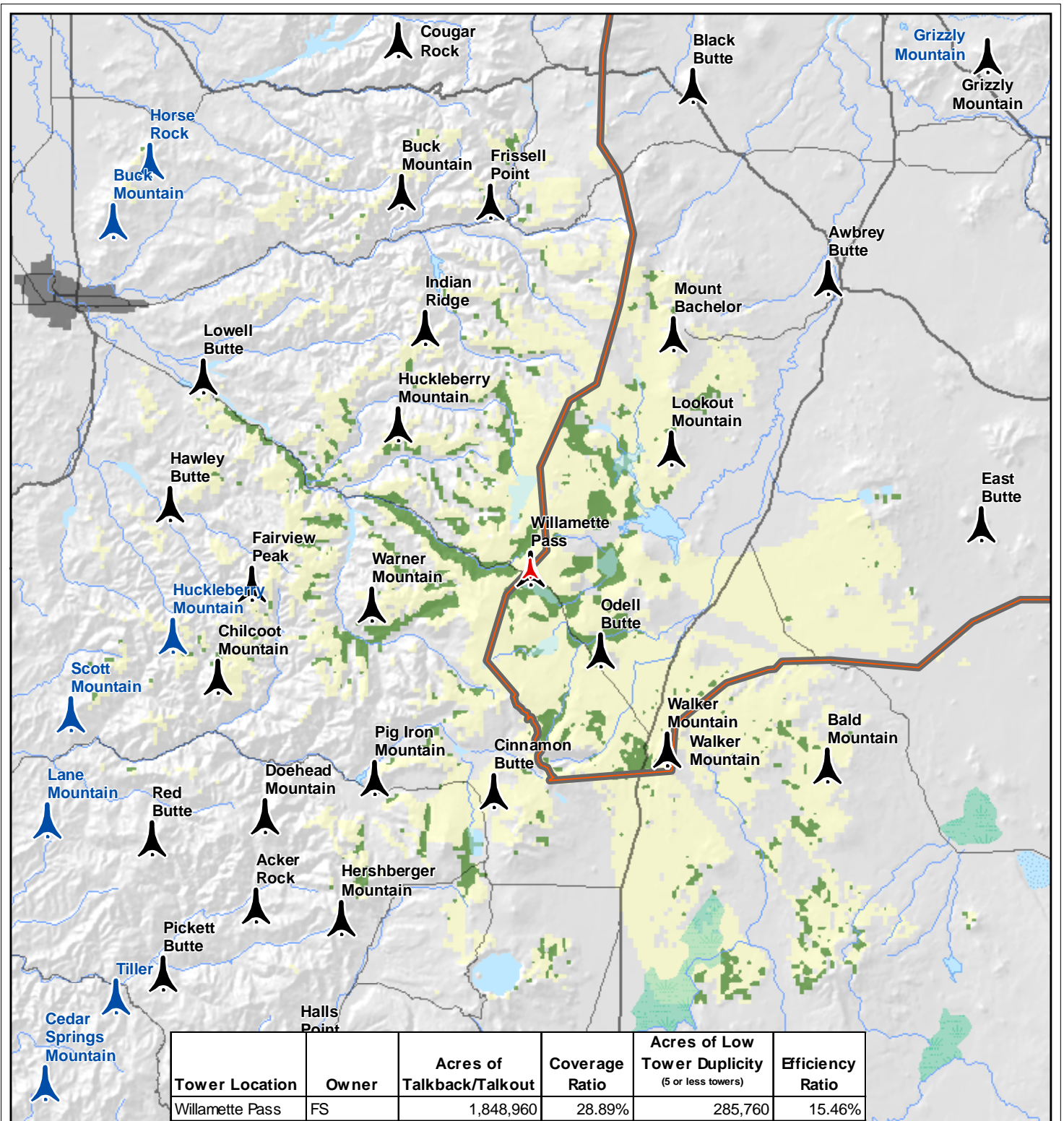
- Highlighted Tower
- FS Radio Towers
- BLM Radio Towers
- Dispatch Boundaries
- State Boundaries
- Urban Areas
- Interstates
- US Highways
- State Highways
- Streams
- Intermittent Streams
- Lakes, Bays, Estuaries or Ocean
- Dry Lakes
- Intermittent Lakes
- Glaciers
- Swamps or Marshes
- Reservoirs
- Intermittent Reservoirs

### Walker Mountain

#### Tower Coverage and Network Efficiency

**Coverage Duplicity**

- 1 - 5 Towers
- > 5 Towers



**Highlighted Tower** (Red triangle)

**FS Radio Towers** (Black triangle)

**BLM Radio Towers** (Blue triangle)

**Dispatch Boundaries** (Red dashed line)

**State Boundaries** (Black dashed line)

**Urban Areas** (Grey square)

**Interstates** (Blue shield with '5')

**US Highways** (White shield with '2')

**State Highways** (Black line)

**Streams** (Blue line)

**Intermittent Streams** (Blue dashed line)

**Lakes, Bays, Estuaries or Ocean** (Blue area)

**Dry Lakes** (Yellow area)

**Intermittent Lakes** (Blue dashed area)

**Glaciers** (White area)

**Swamps or Marshes** (Green area)

**Reservoirs** (Blue area)

**Intermittent Reservoirs** (Blue dashed area)

**Willamette Pass**

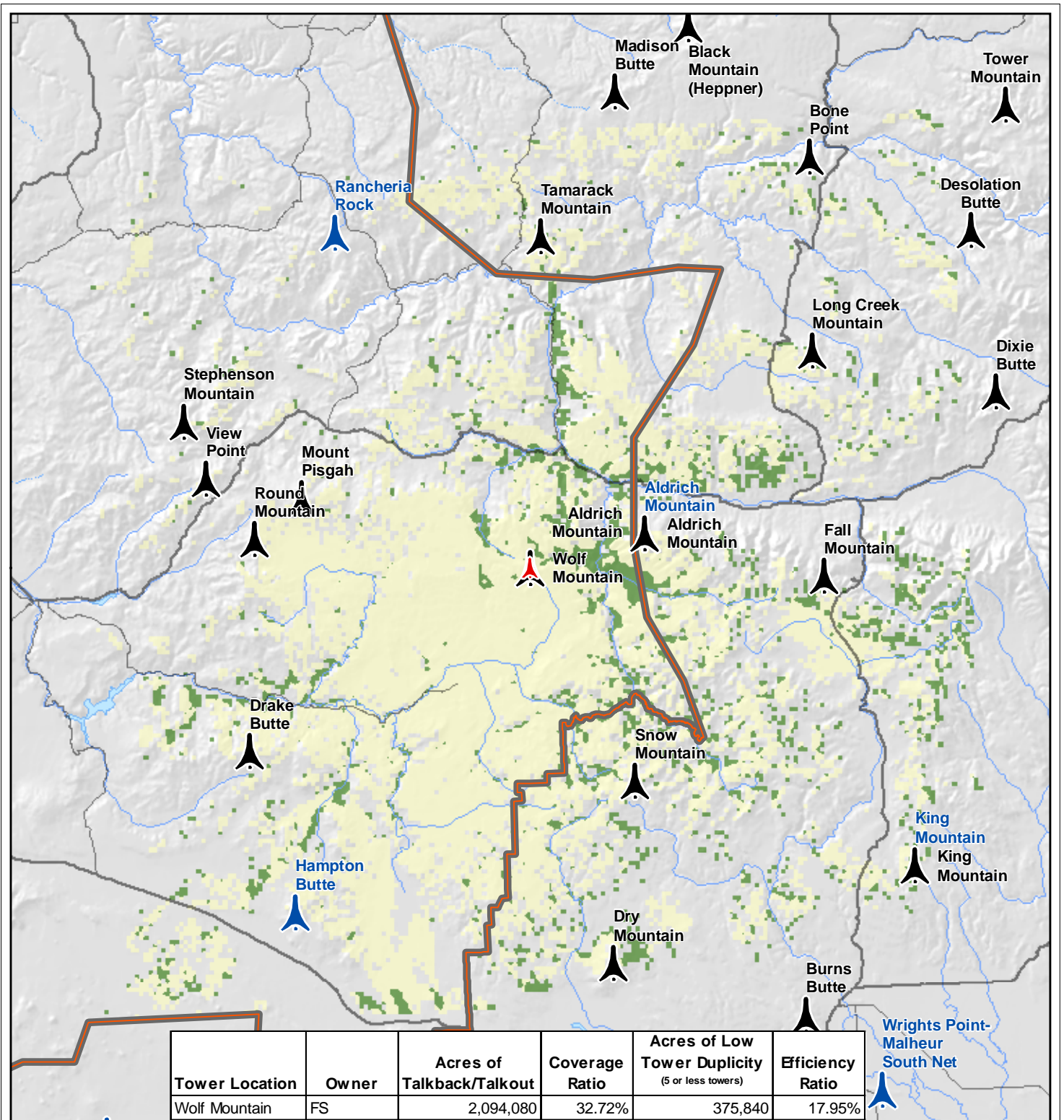
**Tower Coverage and Network Efficiency**

**Coverage Duplicity**

- 1 - 5 Towers
- > 5 Towers

**Location Map**

0 2.5 5 10 Miles



**Highlighted Tower** (Red tower icon)

**FS Radio Towers** (Black tower icon)

**BLM Radio Towers** (Blue tower icon)

**Dispatch Boundaries** (Red dashed line)

**State Boundaries** (Grey dashed line)

**Urban Areas** (Grey square icon)

**Interstates** (Red and blue shield icon)

**US Highways** (Blue shield icon)

**State Highways** (Black line icon)

**Streams** (Blue line icon)

**Intermittent Streams** (Blue dashed line icon)

**Lakes, Bays, Estuaries or Ocean** (Blue area icon)

**Dry Lakes** (Yellow area icon)

**Intermittent Lakes** (Blue dashed area icon)

**Glaciers** (Blue area icon)

**Swamps or Marshes** (Green area icon)

**Reservoirs** (Blue area icon)

**Intermittent Reservoirs** (Blue dashed area icon)

**Location Map**

**Wolf Mountain**

**Tower Coverage and Network Efficiency**

**Coverage Duplicity**

- 1 - 5 Towers
- > 5 Towers