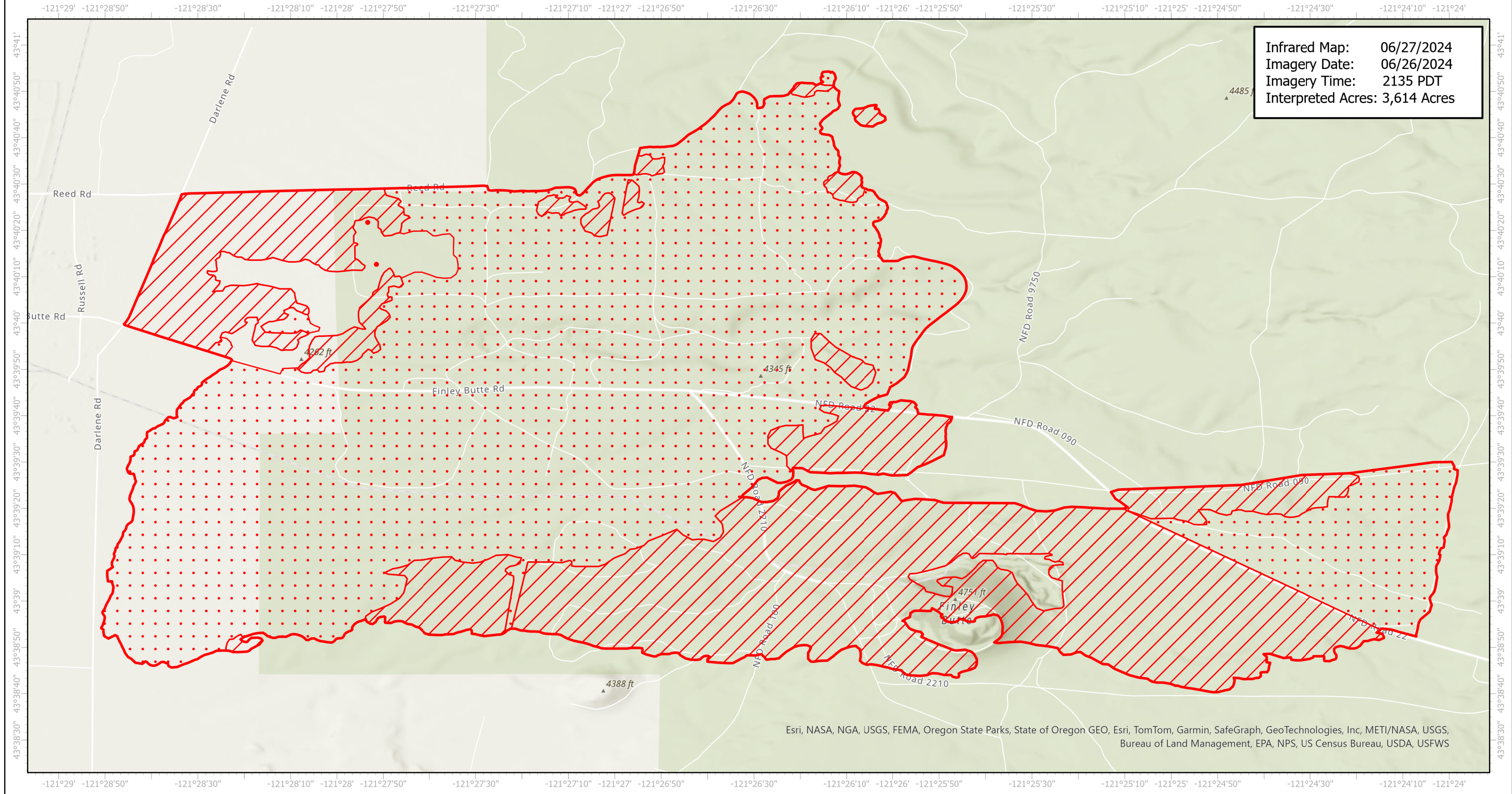
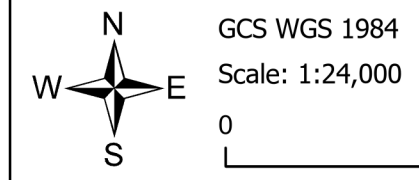


# Darlene\_3 Infrared Map

Incident # (OR-PRD-000289)



Esri, NASA, NGA, USGS, FEMA, Oregon State Parks, State of Oregon GEO, Esri, TomTom, Garmin, SafeGraph, GeoTechnologies, Inc, METI/NASA, USGS, Bureau of Land Management, EPA, NPS, US Census Bureau, USDA, USFWS



- IR Isolated Heat Source
- ▨ IR Intense Heat
- ▭ IR Heat Perimeter
- IR Scattered Heat

Infrared Interrupter: Andrew Owens  
email: Andrew.Owens@usda.gov