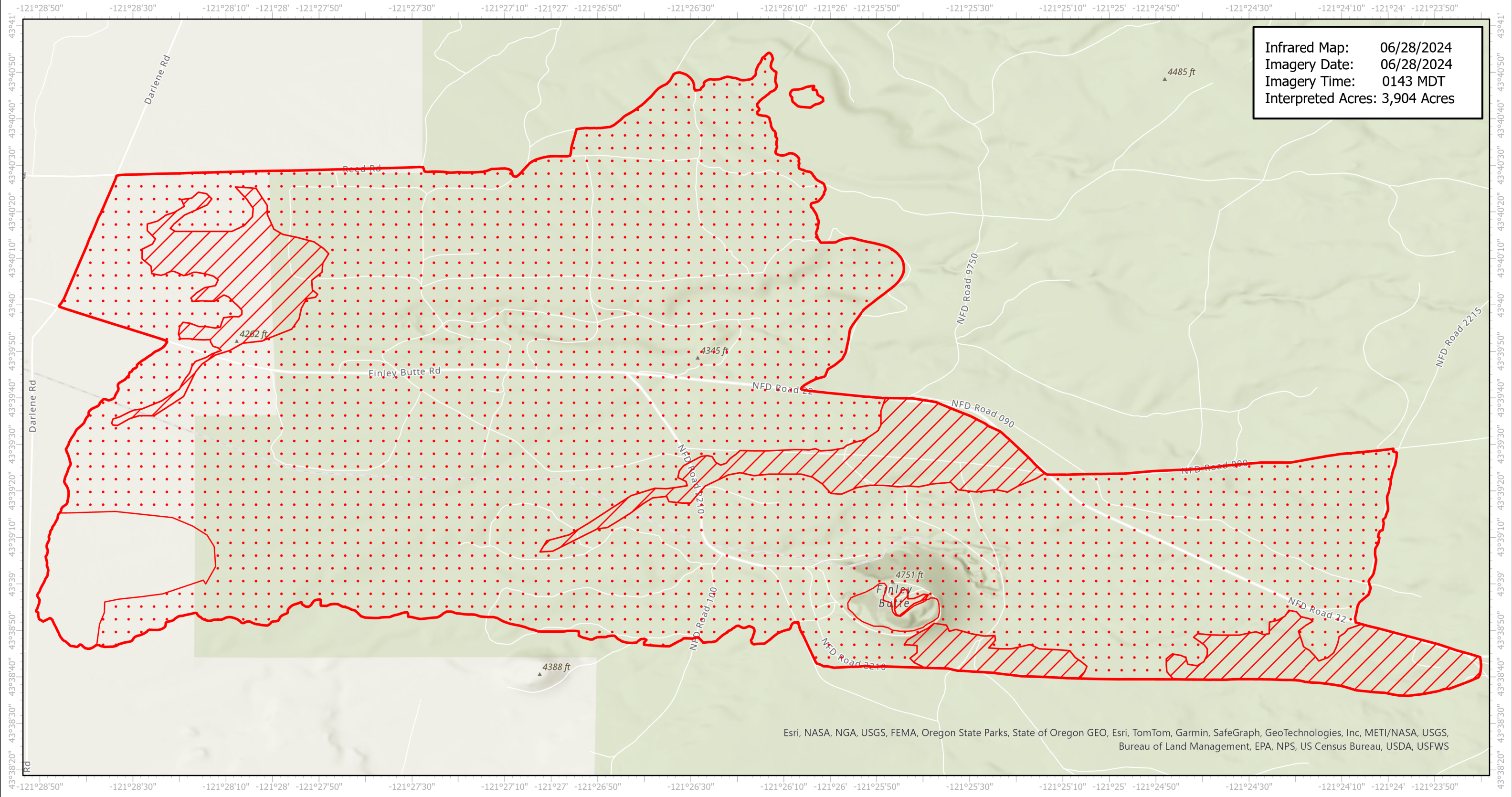


Darlene_3 Infrared Map

Incident # (OR-PRD-000289)



Infrared Map: 06/28/2024
Imagery Date: 06/28/2024
Imagery Time: 0143 MDT
Interpreted Acres: 3,904 Acres



Esri, NASA, NGA, USGS, FEMA, Oregon State Parks, State of Oregon GEO, Esri, TomTom, Garmin, SafeGraph, GeoTechnologies, Inc, METI/NASA, USGS, Bureau of Land Management, EPA, NPS, US Census Bureau, USDA, USFWS

GCS WGS 1984
Scale: 1:24,000

0 1 2 Miles

- IR Heat Perimeter
- IR Intense Heat
- IR Scattered Heat

Infrared Interrupter: Andrew Owens
email: Andrew.Owens@usda.gov