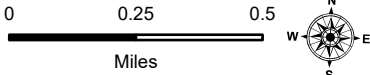


123°29.5'W 123°29'W 123°28.5'W 123°28'W 123°27.5'W 123°27'W 123°26.5'W

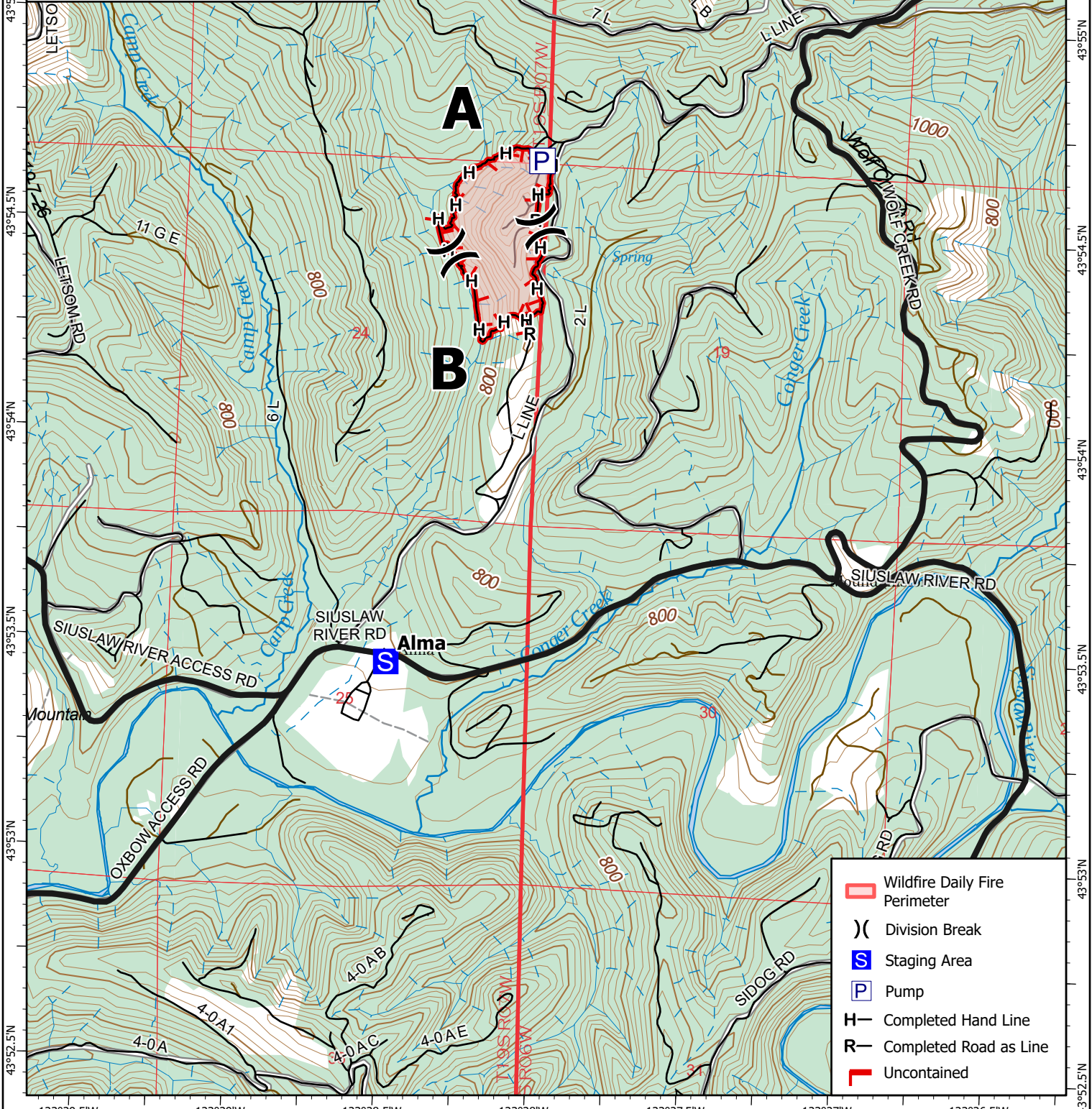
# IAP

Letsom Mt  
OR781S000194  
06/04/2024 to the Final Day

65.39 acres at 06/02/2024 @1954



1:24,000 | ODF Western Lane GIS | 06/03/2024 1051  
Acres from Hand Sketched Perimeter  
North American 1983 Datum. Lat/Long Grid



- Wildfire Daily Fire Perimeter
- Division Break
- Staging Area
- Pump
- Completed Hand Line
- Completed Road as Line
- Uncontained

123°29.5'W 123°29'W 123°28.5'W 123°28'W 123°27.5'W 123°27'W 123°26.5'W