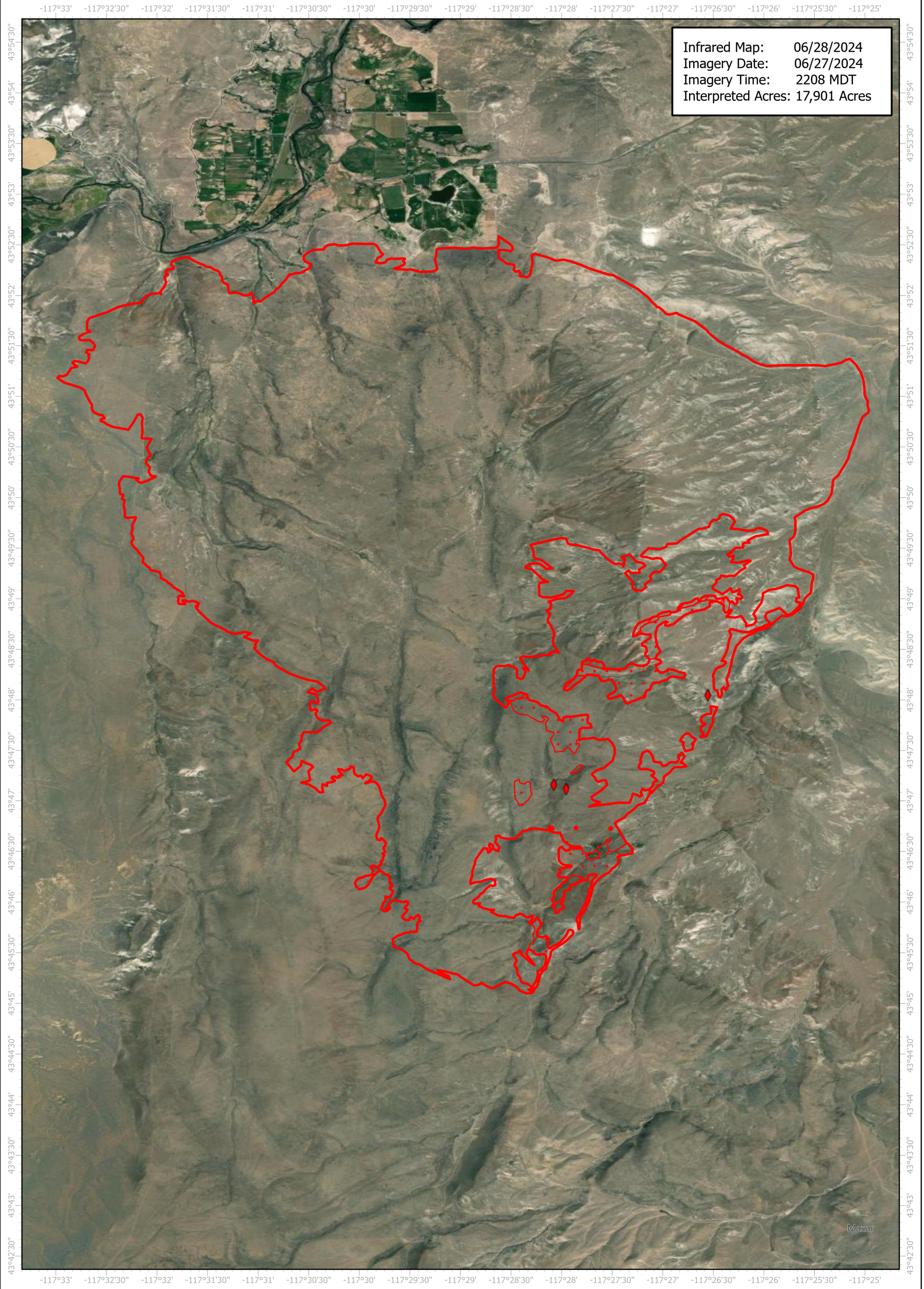


Little Valley Infrared Map

Incident # (OR-VAD-240091)



Infrared Map: 06/28/2024
Imagery Date: 06/27/2024
Imagery Time: 2208 MDT
Interpreted Acres: 17,901 Acres

GCS WGS 1984
Scale: 1:63,360

0 1 2 Miles

- IR Isolated Heat Source
- ◊ Possible IR Heat Source
- ◻ IR Heat Perimeter
- ◻ IR Intense Heat
- ◻ IR Scattered Heat

Infrared Interrupter: Andrew Owens
email: Andrew.Owens@usda.gov