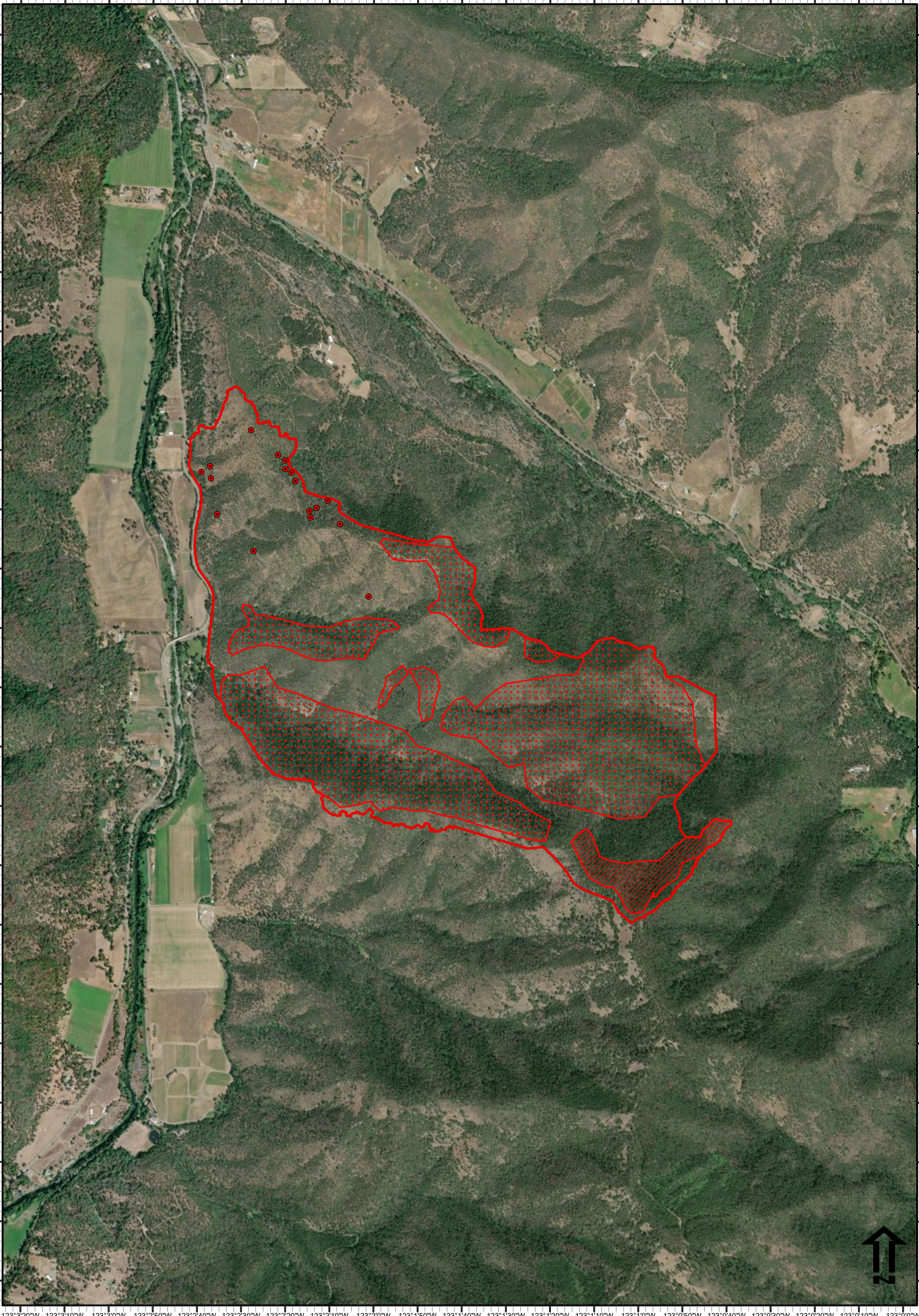


123°3'20"W 123°3'10"W 123°3'0"W 123°2'50"W 123°2'40"W 123°2'30"W 123°2'20"W 123°2'10"W 123°2'0"W 123°1'50"W 123°1'40"W 123°1'30"W 123°1'20"W 123°1'10"W 123°1'0"W 123°0'50"W 123°0'40"W 123°0'30"W 123°0'20"W 123°0'10"W 123°0'0"W



123°3'20"W 123°3'10"W 123°3'0"W 123°2'50"W 123°2'40"W 123°2'30"W 123°2'20"W 123°2'10"W 123°2'0"W 123°1'50"W 123°1'40"W 123°1'30"W 123°1'20"W 123°1'10"W 123°1'0"W 123°0'50"W 123°0'40"W 123°0'30"W 123°0'20"W 123°0'10"W 123°0'0"W

Upper Applegate 3900

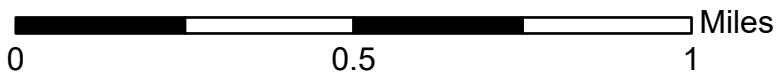
711-382-24





Infrared Heat Sources

6/26/2024 0030

896 Interpreted Acres

IRIN: Lindsey Kiesz



-  IR Isolated Heat Source
-  IR Heat Perimeter
-  IR Intense Heat
-  IR Scattered Heat

