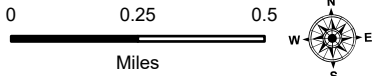


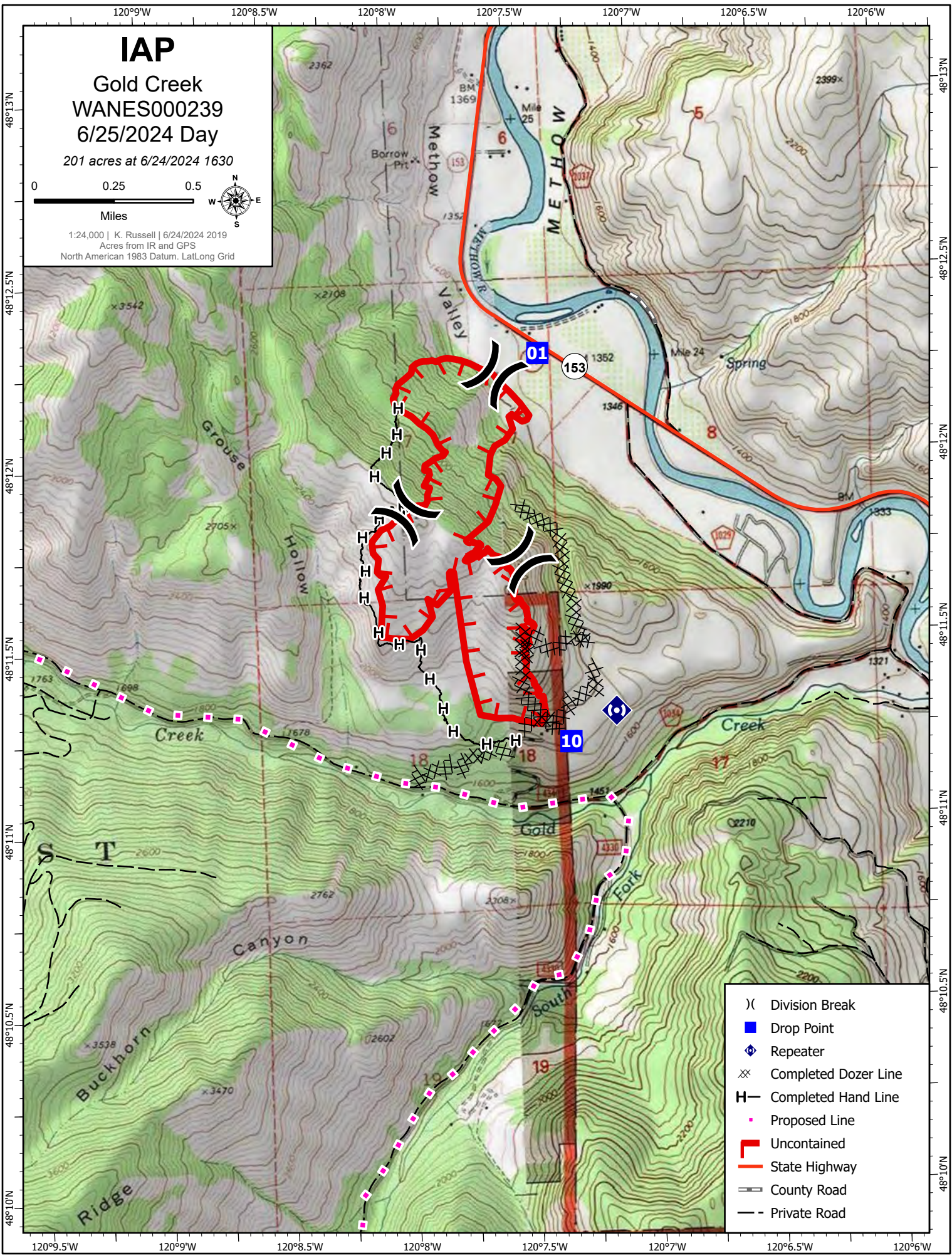
IAP

Gold Creek
WANES000239
6/25/2024 Day

201 acres at 6/24/2024 1630



1:24,000 | K. Russell | 6/24/2024 2019
Acres from IR and GPS
North American 1983 Datum, LatLong Grid



- (X) Division Break
- Drop Point
- ◆ Repeater
- ⊗ Completed Dozer Line
- H— Completed Hand Line
- Proposed Line
- ┌ Uncontained
- State Highway
- County Road
- - Private Road