

# BRIEFING

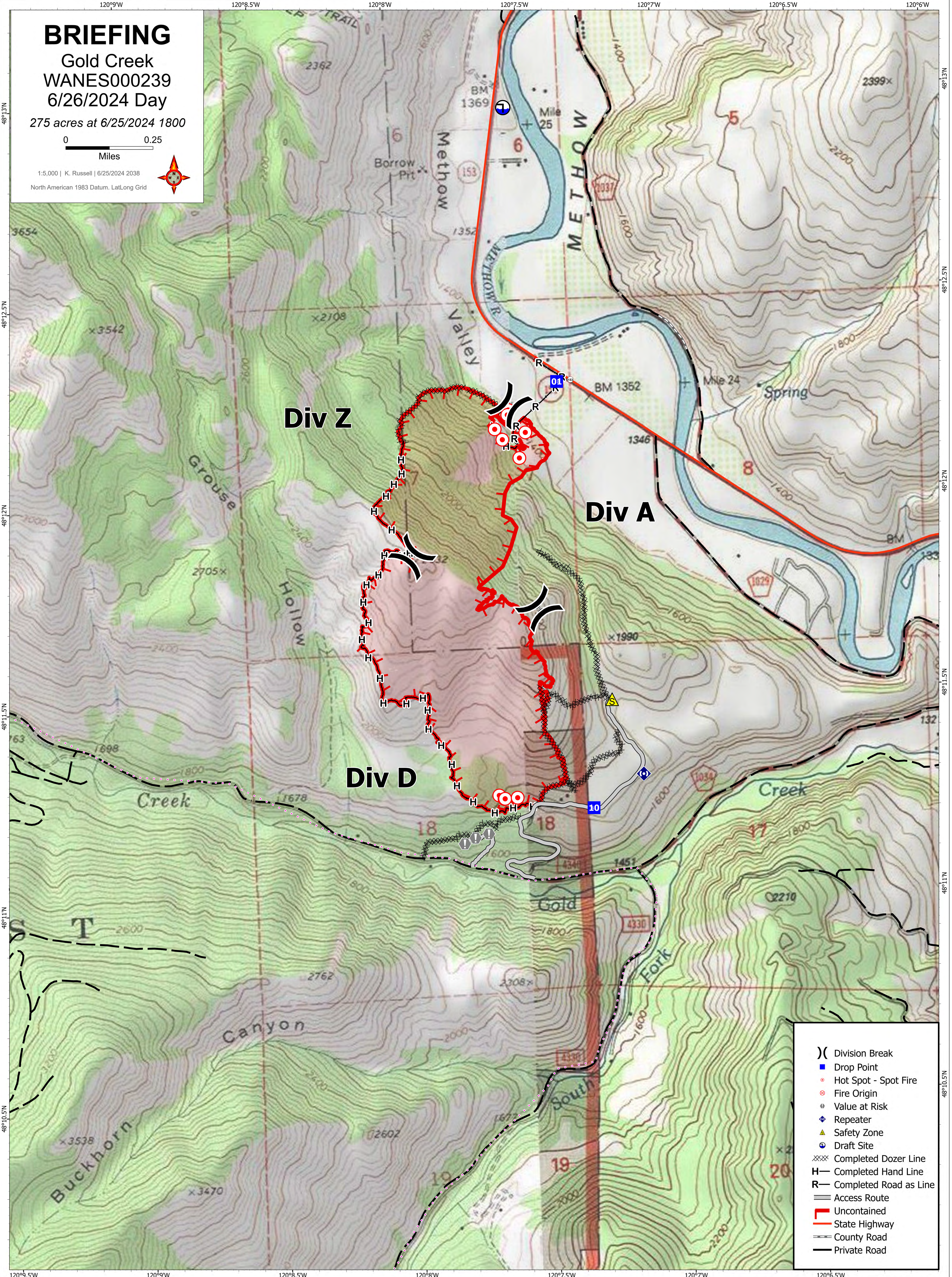
Gold Creek  
WANES000239  
6/26/2024 Day

275 acres at 6/25/2024 1800



1:5,000 | K. Russell | 6/25/2024 2038

North American 1983 Datum, Lat/Long Grid



- )) Division Break
- Drop Point
- Hot Spot - Spot Fire
- ⊙ Fire Origin
- Value at Risk
- ◆ Repeater
- ▲ Safety Zone
- ⊙ Draft Site
- ⊗ Completed Dozer Line
- H Completed Hand Line
- R Completed Road as Line
- Access Route
- State Highway
- County Road
- Private Road